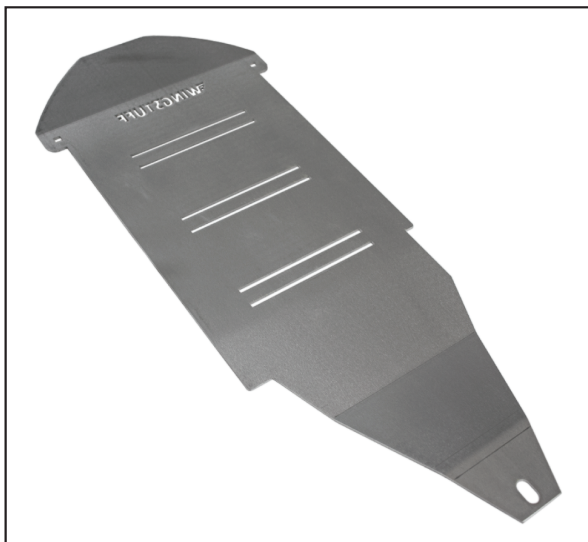


BELLY PAN FOR 2018+ GOLD WING (6-SPEED MANUAL & DCT MODELS)

PART NO. GW2018BP / GW2018BPK



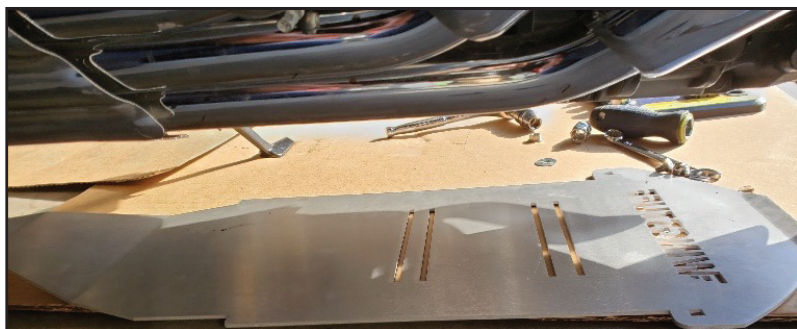
LIST OF INCLUDED PARTS	QTY.
Belly Pan for 2018+ Gold Wing	1
Mounting Brackets (left & right)	2
5/16" Square Neck Carriage Bolts	2
Serrated nylon nuts	2
Rear T-Bolt M8-20 mm	1
Steel Hex Jam Flat Nut 12mm + washer	1
M8-1.25 Serrated Flange Nut + washer	1

REQUIRED TOOLS:

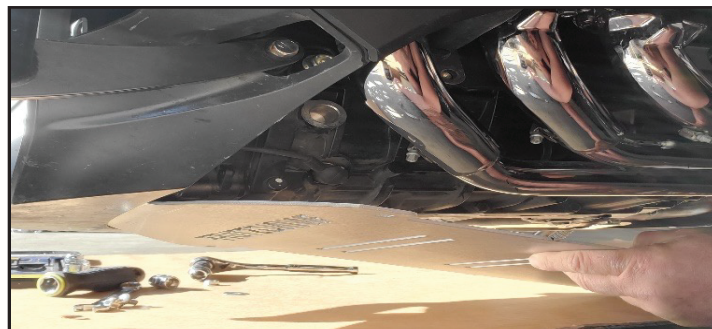
1/2" Combination Wrench

Socket Wrench (13mm & 12mm sockets)

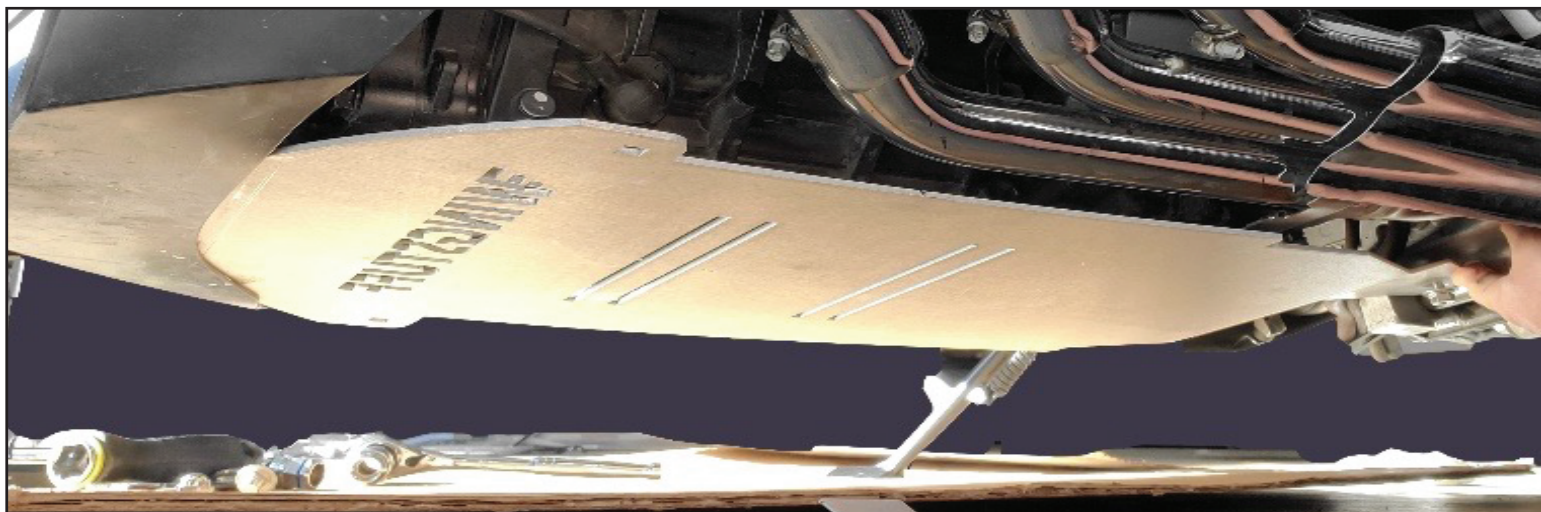
BELLY PAN INSTALLATION



1. Slide the pan under the front plastic cover as shown



2. Push it inside the plastic cover about an inch. You can keep the belly pan on top of the plastic cover not tucked inside if you prefer



3. Slide the skid plate above the exhaust clips as shown in the picture above

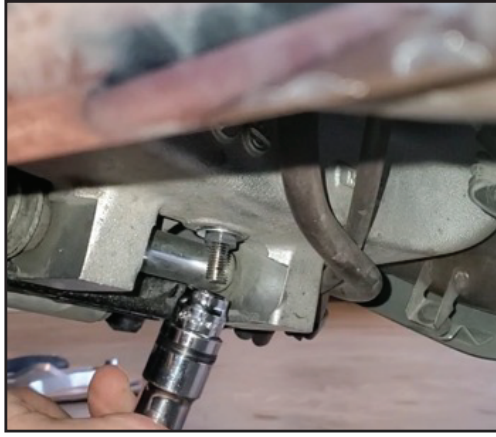
For customer service & technical support please contact:

WingStuff.com | Phone: 949.454.2199 | Email: customerservice@wingstuff.com

REAR T-BOLT INSTALLATION



4. Insert the provided Rear T-Bolt through the existing oval hole in the center stand base of the motorcycle



5. Use the thin flat nut with washer as shown, to go through the existing oval hole in the center stand base. Rotate T-Bolt inside the hole at a 90 degree angle and tighten the thin nut to hold the T-Bolt in place



6. Now you can install the rear of the plate using the second M8 - 1.15 Serrated Flange Nut as shown

MOUNTING BRACKETS INSTALLATION



7. Included left and right mounting brackets. Consider the left and right as your left and right side in your riding position



8. Remove front engine guard screw, insert the right bracket as shown, tighten halfway. Attach the other end to the the pan using the 5/16" Square Neck Carriage Bolts and Serrated Nylon Lock Nut. Repeat on the left



9. Remove the plastic cover on the left side. Front engine guard screw is not accessible like the right side. Repeat same steps for left side bracket as you did for the right side



10. Adjust pan under the engine, tighten all screws and bolts. Re-install left plastic cover



Tip: For oil change there is no need to remove the top engine guard bolts. Only the 3 screws that are attached to the bottom of the belly pan

For customer service & technical support please contact:

WingStuff.com | Phone: 949.454.2199 | Email: customerservice@wingstuff.com