

SAVE MONEY . . . SAVE TIME!

HEAVY DUTY TIRE REPAIR KIT

Fixes flats on the wheel . . . permanently, quickly, easily!

PLUGS THE HOLE AND PATCHES THE INSIDE OF THE TIRE!

You can repair your tubeless tires on the wheel...with the same repair used by many of the best tire shops. No more hard, dirty, time-consuming work dismounting and repairing flats. Eliminate expensive service calls. You'll be thrilled with the results -- and the time and money you save -- each time you use your kit.

HEAVY DUTY KIT FIXES FLATS ON THE WHEEL



FOR ALL TUBELESS TIRES

• 2 & 4 PLY TIRES:

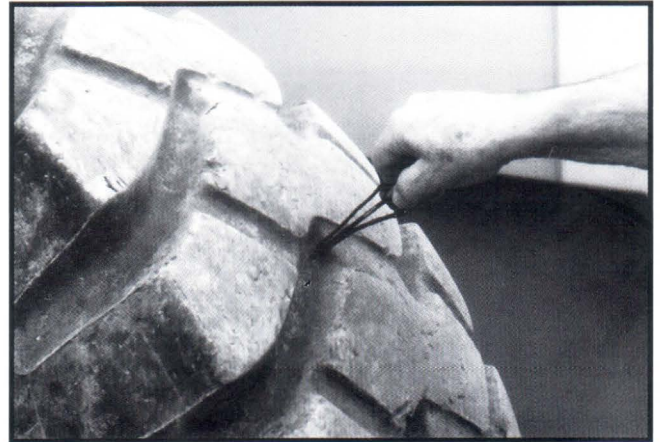
Autos, small trucks, riding mowers, ATV's, motorcycles, golf cars, garden tractors, and many farm implements.

• 6 PLY & LARGER TIRES:

Trucks, wagons, trailers, large farm implements, and heavy equipment.

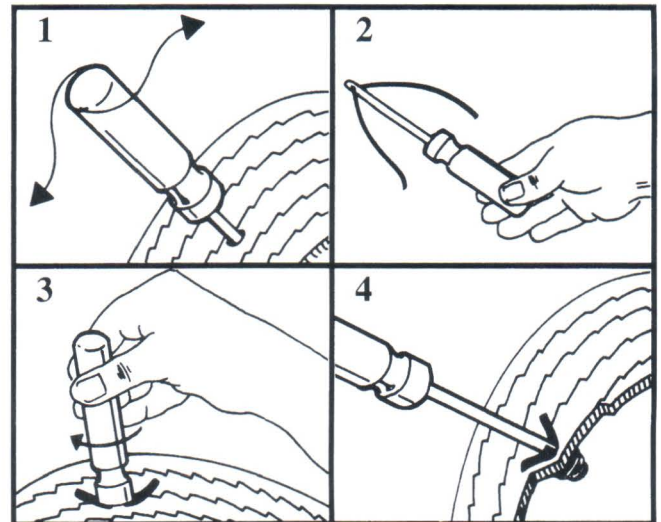
PROFESSIONAL QUALITY

- Strong inserting tool won't bend or break.
- Repair strand uses no glue or cement.
- Repair strand will not tear in two.
- Repair lasts the life of the tire.



EASY TO USE

1. Insert unthreaded tool into puncture and rock handle vigorously to clean hole.
2. Thread repair cord through eye of inserting tool until ends are even.
3. Insert tool into puncture all the way to handle and then turn 1-1/2 revolutions.
4. Pull tool out until tip just clears tire surface. Cut exposed cord to free tool. Hole is now plugged and a patch-like repair remains on the inside.



A must for every tool box . . . in the field or on the road!

THE NEALEY COMPANY • 1-800-289-9781 • FAX 1-515-987-2100
www.tirerepairkit.com