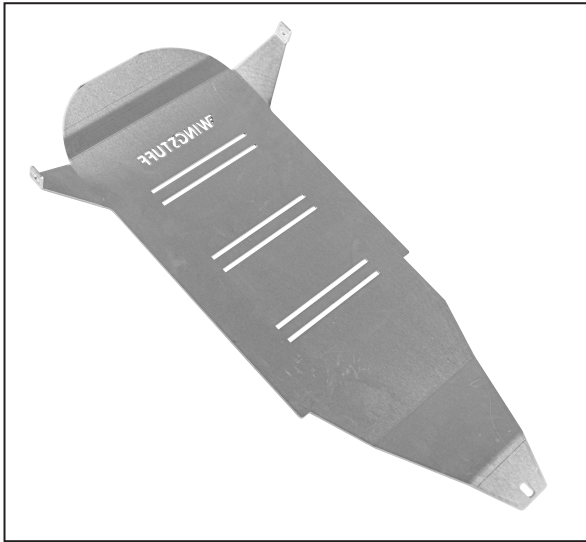


BELLY PAN FOR 2018+ GOLD WING (6-SPEED MANUAL & DCT MODELS)

PART NO. GW2018BP / GW2018BPBK



*Included left and right mounting brackets. Consider the left and right as your left and right side in your riding position

LIST OF INCLUDED PARTS	QTY.
Belly Pan for 2018+ Gold Wing	1
Mounting Brackets (left & right)	2
5/16" Hex Drive Bolts	2
Serrated Lock nuts	2
Rear T-Bolt M8-20 mm	1
Steel Hex Jam Flat Nut 12mm + washer	1
M8-1.25 Serrated Flange Nut + washer	1

REQUIRED TOOLS:

1/2" Combination Wrench

5/16" Allen Wrench

Socket Wrench (13mm & 12mm sockets)

BELLY PAN INSTALLATION



1. Insert the provided Rear T-Bolt through the existing oval hole in the center stand base of the motorcycle



2. Rotate T-Bolt inside the hole at a 90 degree angle and tighten the thin flat nut to hold the T-Bolt in place



3. OPTIONAL: You can either keep the front of the belly pan tucked inside or outside of the front lower cowl

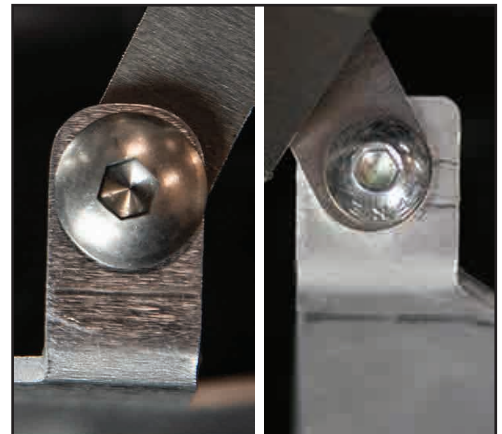


4. Now you can install the rear of the plate using the second M8 - 1.15 Serrated Flange Nut as shown and tighten halfway



5. Remove front right engine guard screw, insert the right bracket as shown, tighten halfway. Attach the other end to the pan using the 5/16" Hex Drive Bolts and Lock Nut.

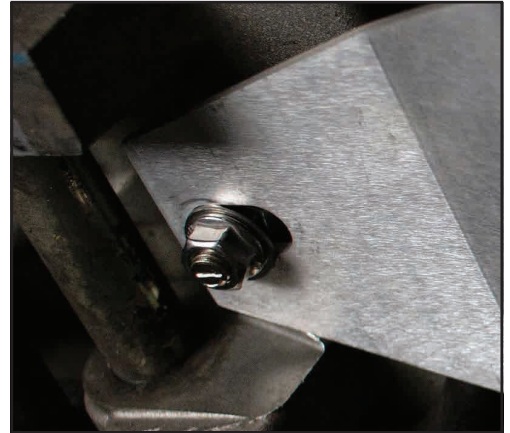
OPTIONAL: Brackets can be attached using either end. Also, in or outside of mounting tab



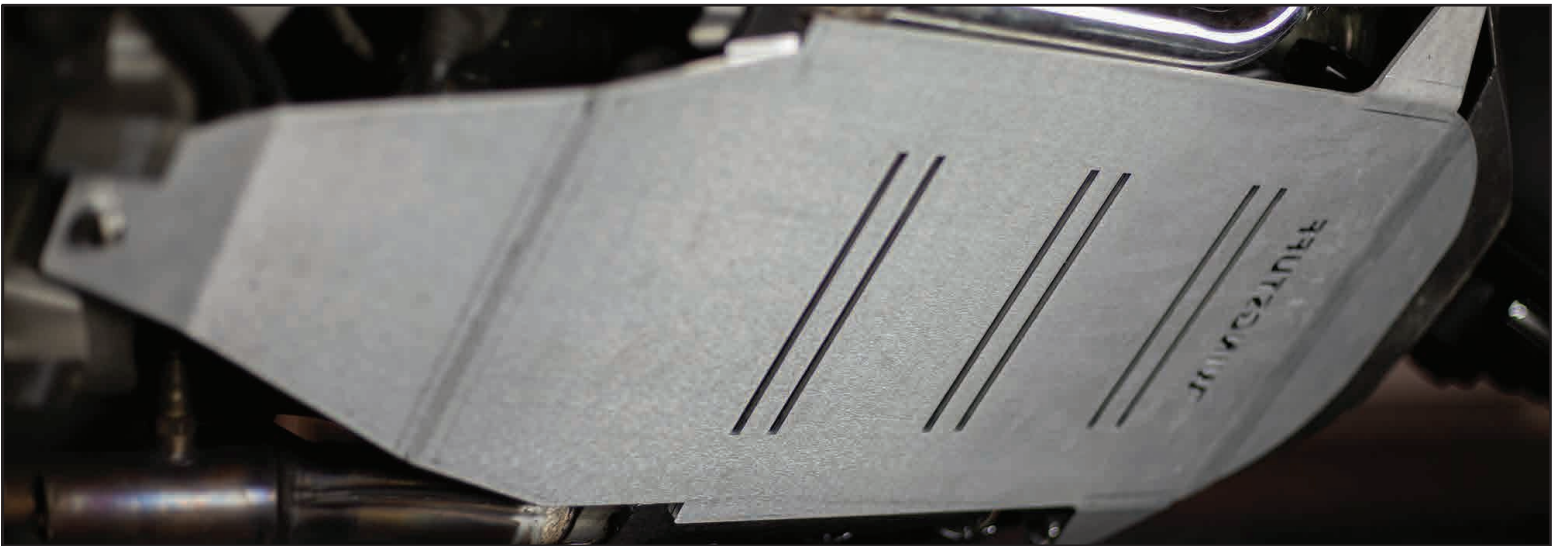
For customer service & technical support please contact:



6. OPTIONAL: You can either remove the left side engine cover, or leave attached. If you do not remove it, the combination wrench is the best way to remove engine guard bolt. Repeat same steps as you did with the right side bracket



7. Now that the belly pan is attached at all three mounting points, go back and tighten the crash guard bolts and belly pan bolts. Re-install left side engine cover if you removed it



Tip: For oil change there is no need to remove the top engine guard bolts. Only the 3 screws that are attached to the bottom of the belly pan

_____ For customer service & technical support please contact: _____

WingStuff.com | Phone: 949.454.2199 | Email: customerservice@wingstuff.com