



# GOLDSTRIKE™ LED STRIPS FOR ENGINE LIGHTING PANELS

Parts Included: 2 LED LIGHT STRIPS



## INSTALLATION INSTRUCTIONS:

Park on a level surface and shut off the motorcycle. Ensure the engine has time to cool before installation.

Note: Work on one side of motorcycle and complete the installation before moving on to the other side.

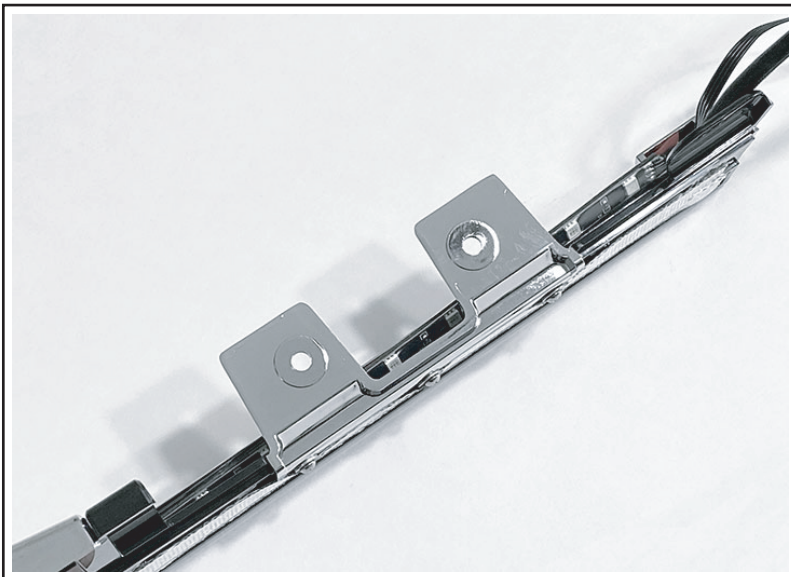
Note: A controller is required. This Engine Light Kit is designed to work with the Shock and Awe LED lighting system. If you already have a Shock and Awe system on your motorcycle plug into that system. If you do not have a Shock and Awe system you will need a controller.

Goldstrike LED controllers:

Part# 42000 Manual Controller

Part# 41035 Shock & Awe 2.0, Controller Kit

1. Plug the LED Light Strips into the LED lighting system or controller to familiarize yourself with how they function and the ideal wire route. Unplug them and set them aside to begin the installation.
2. Remove Goldstrike LED Engine Light Cover P/N 40055. Set aside the hardware. (FIG.1.)
3. Gently pull the LED engine cover away from the motorcycle and turn it over so it is bottom side up. You should not need to unplug the light.



### WARNING:

This indication alerts you to the fact that ignoring the contents described herein can result in potential serious injury or death if not followed.

### CAUTION:

This indication alerts you to the fact that ignoring the contents described herein can or will result in material damage and/or personal injury.

### ATTENTION:

This indication alerts you to the fact if you ignore this detail you will affect the performance or functionality of the product.

All Ciro products are designed for "easy assembly" and/or "plug and play". We recommend a competent mechanic install our products, using standard mechanical procedures to assure a safe and successful installation.

### NOTE:

Ciro products are designed and manufactured under very strict quality control. Ciro warrants that products sold to the original purchaser shall be free from any defects in materials and workmanship for a period of 3 (three) years from the date of purchase, and a lifetime warranty against LED failure.

Ciro will have no obligation if the customer cannot show proof of purchase.

Warranty will not be granted unless the part is properly installed and maintained.

Ciro will not be liable for any consequential and incidental damages, including labor, or non-Ciro products.

Please visit our website [Ciro3d.com](http://Ciro3d.com) for our complete warranty policy.

4. Test fit the LED light strip. There is a channel on the back of the Cover designed to hold the LED strip. (FIG.2)
5. Peel the red adhesive backing off the LED strip and carefully insert it into the cover. (FIG.3)
6. Route the wire along the same path as the wire from the LED engine light cover. (FIG.4)
7. Reinstall the LED engine light cover. (FIG.1.)
8. Plug into the lighting system.

