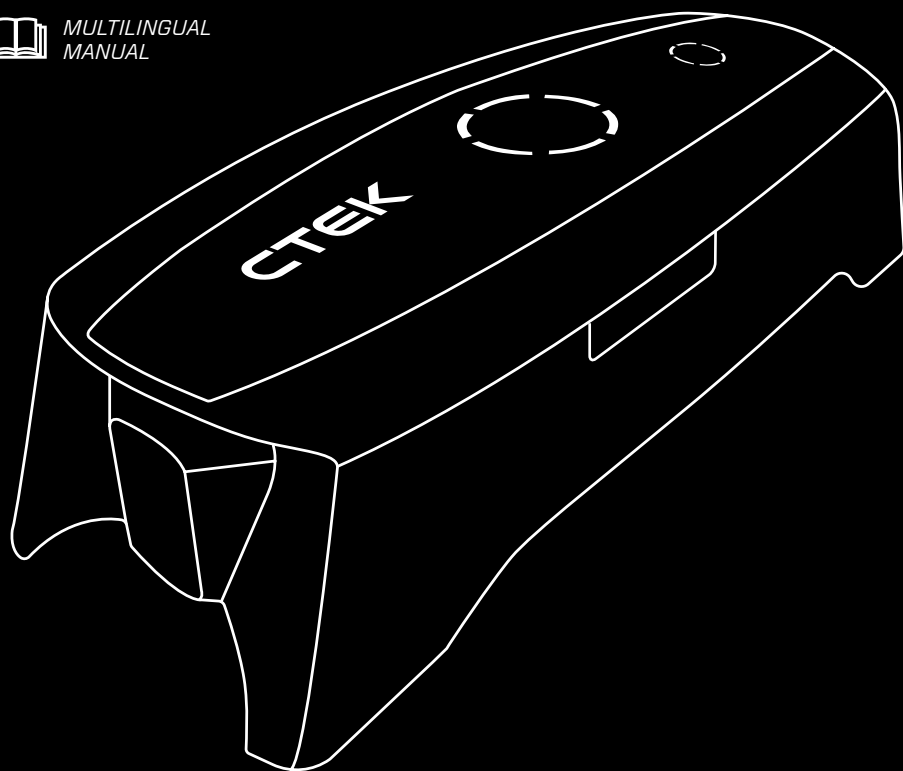


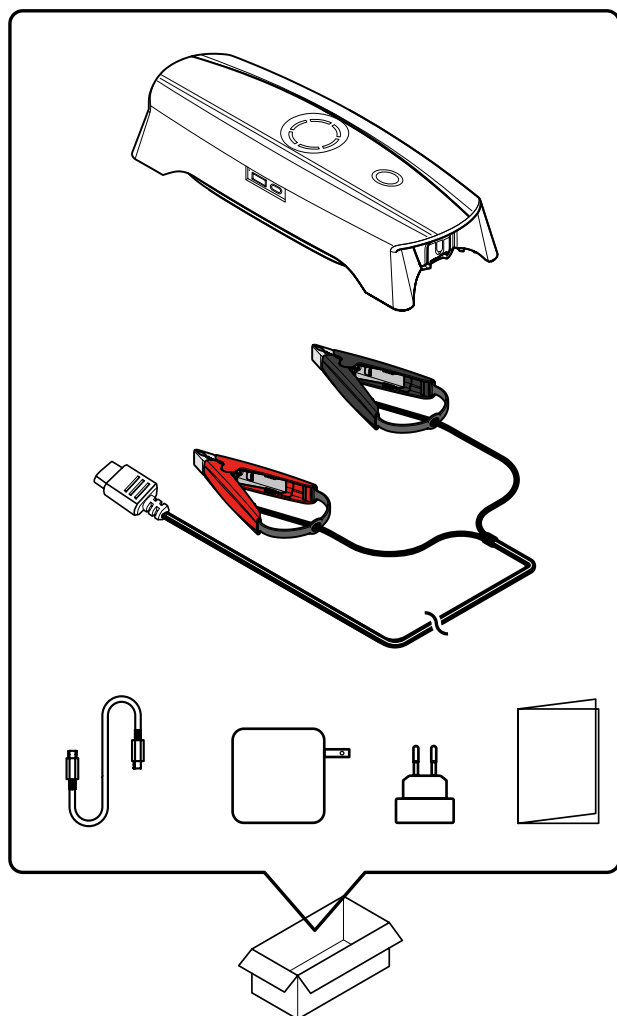
CTEK

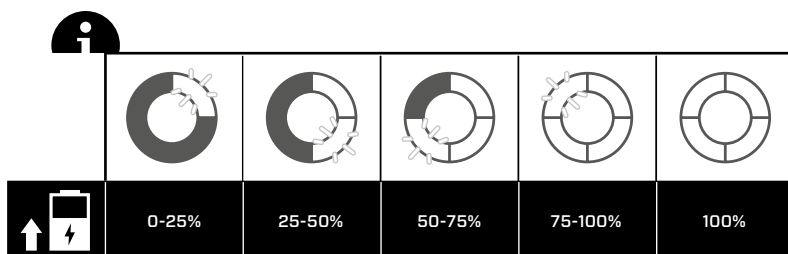
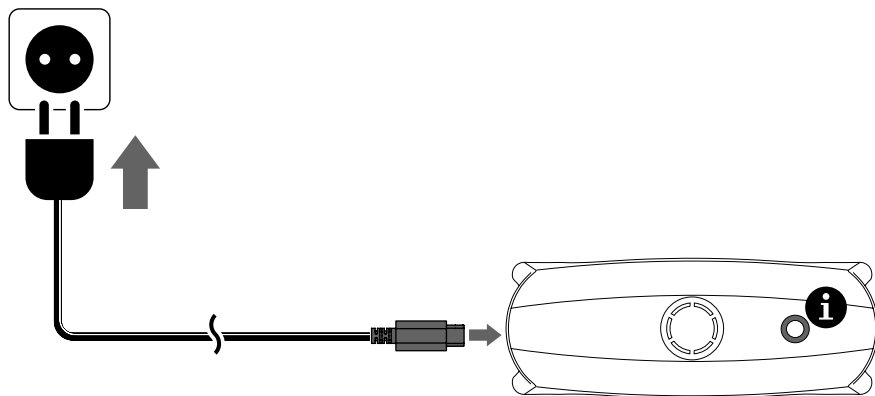
USER MANUAL ***CS FREE***



MULTILINGUAL
MANUAL

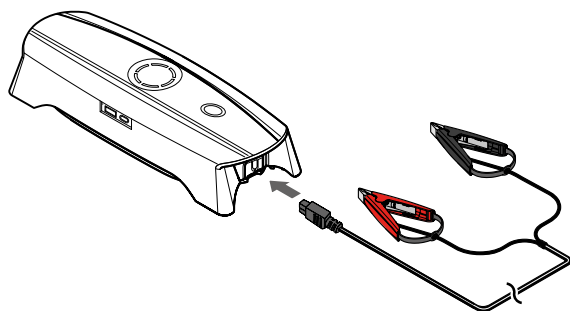




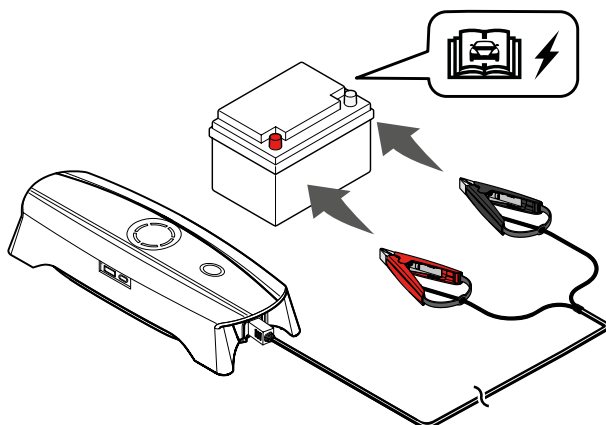




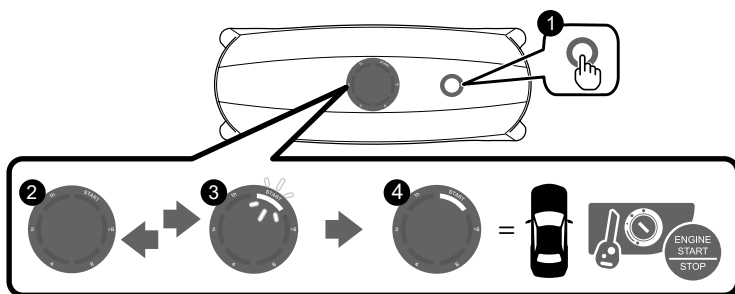
1



2

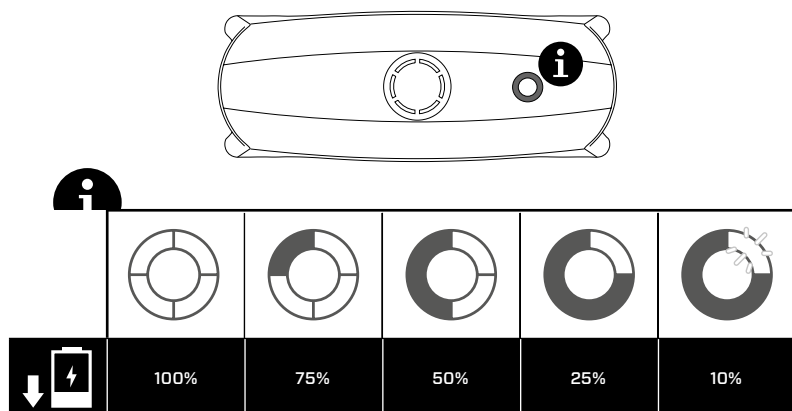


3

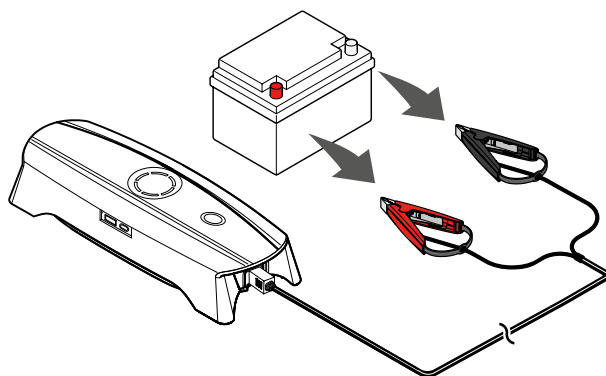




4

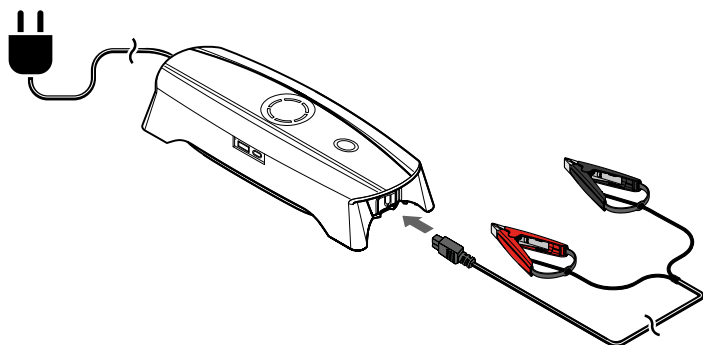


5

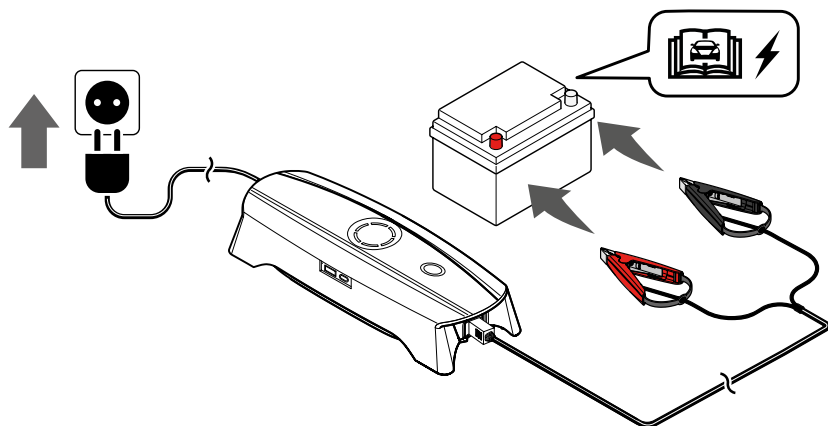




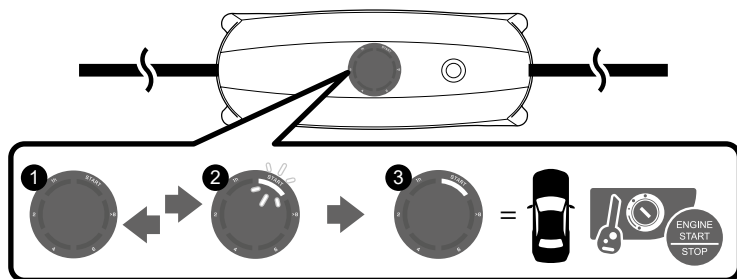
1



2

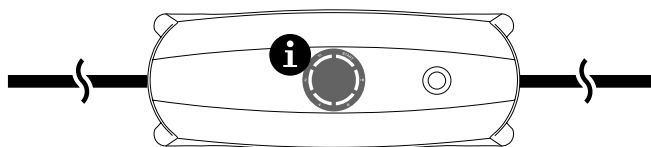


3





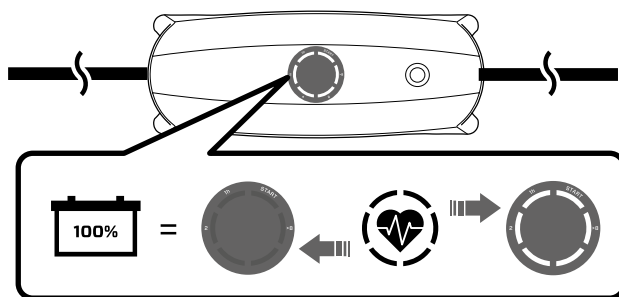
4



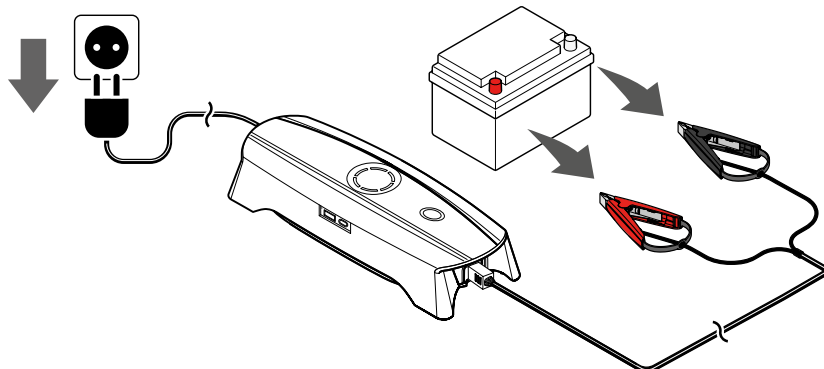
i

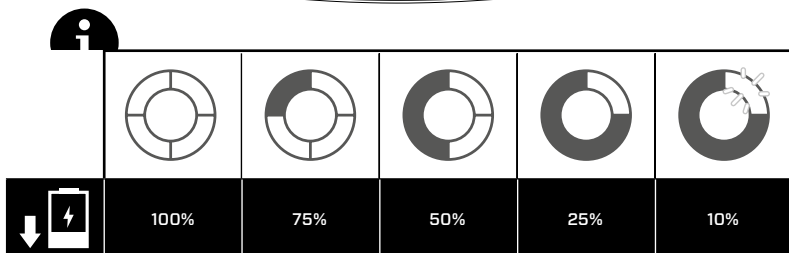
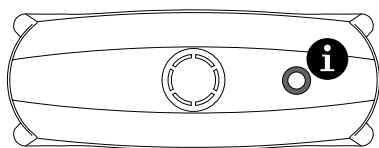
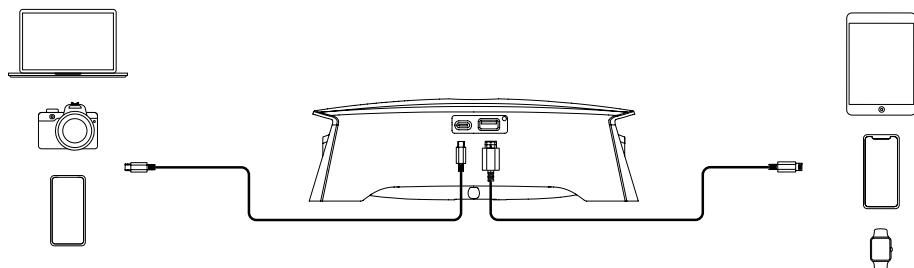
	≥ 8h	~ 6 h	~ 4 h	~ 2 h	~ 1 h	

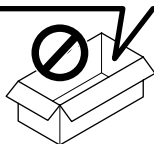
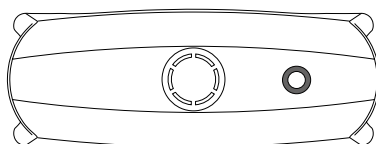
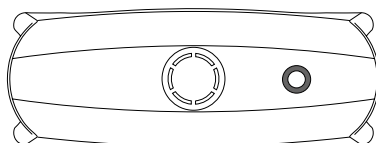
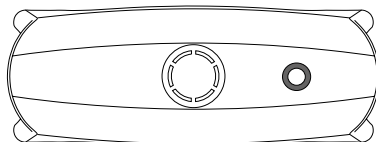
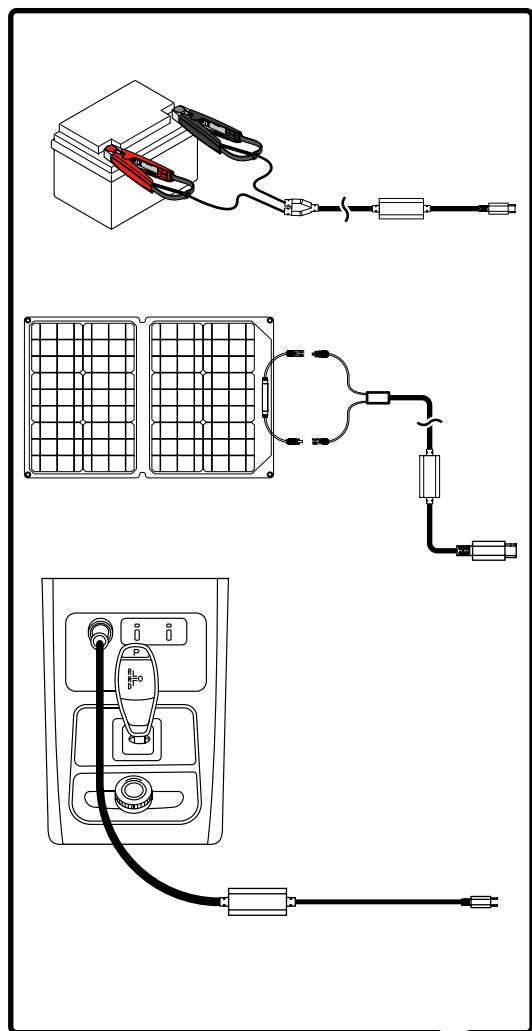
5

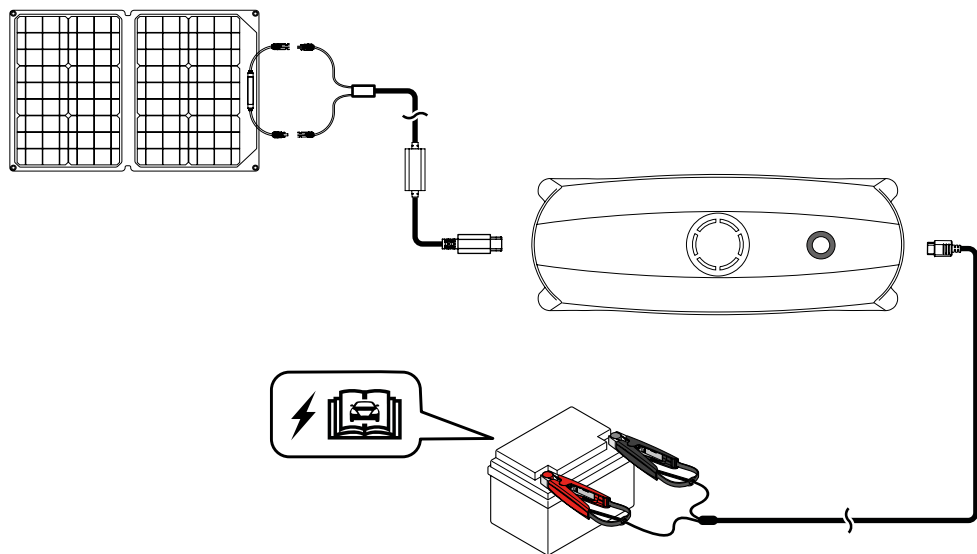
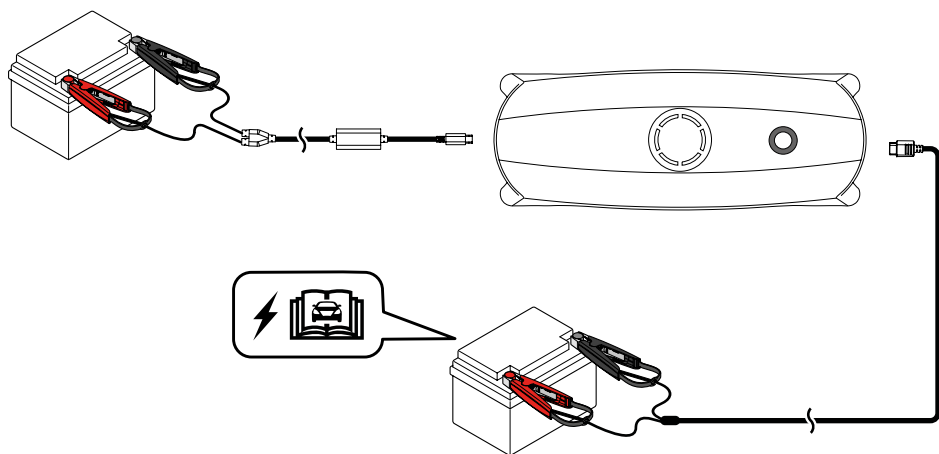
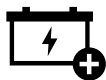


6



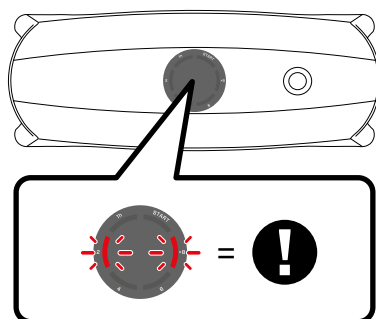




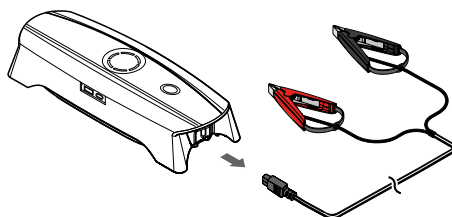




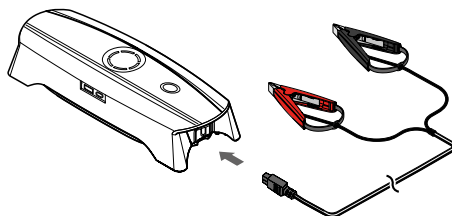
1



2

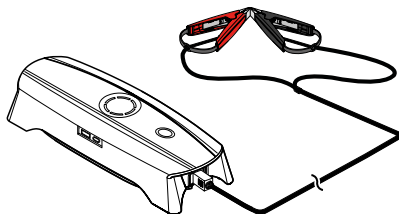
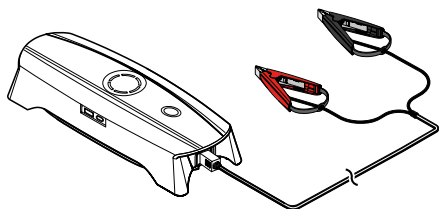


3

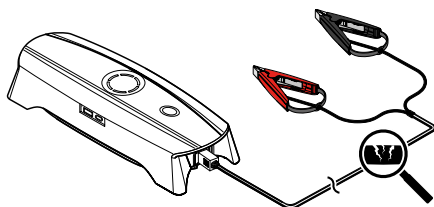
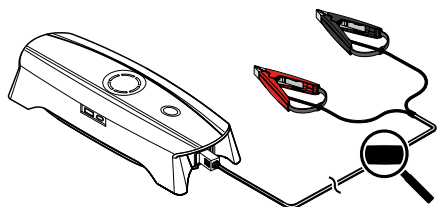




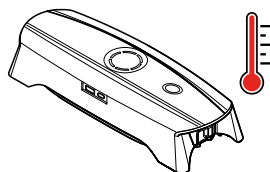
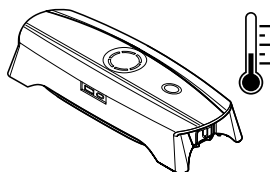
4



5

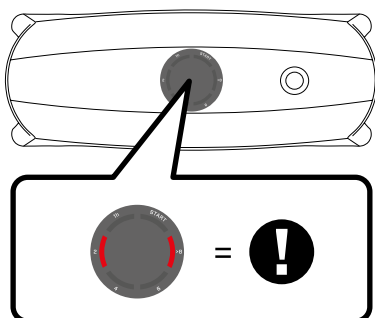


6

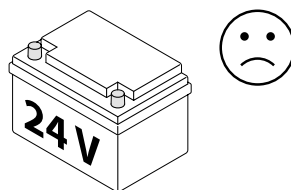
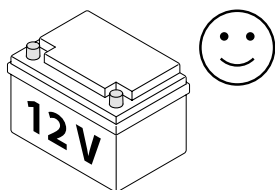




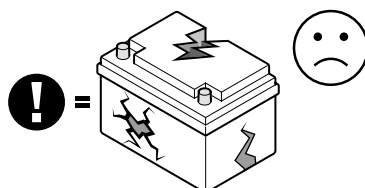
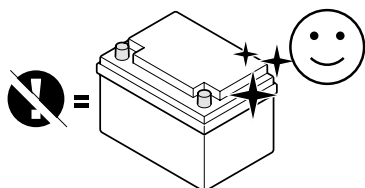
1



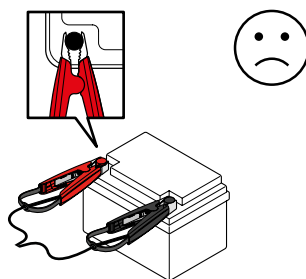
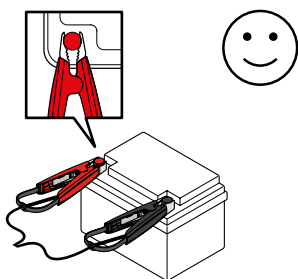
2

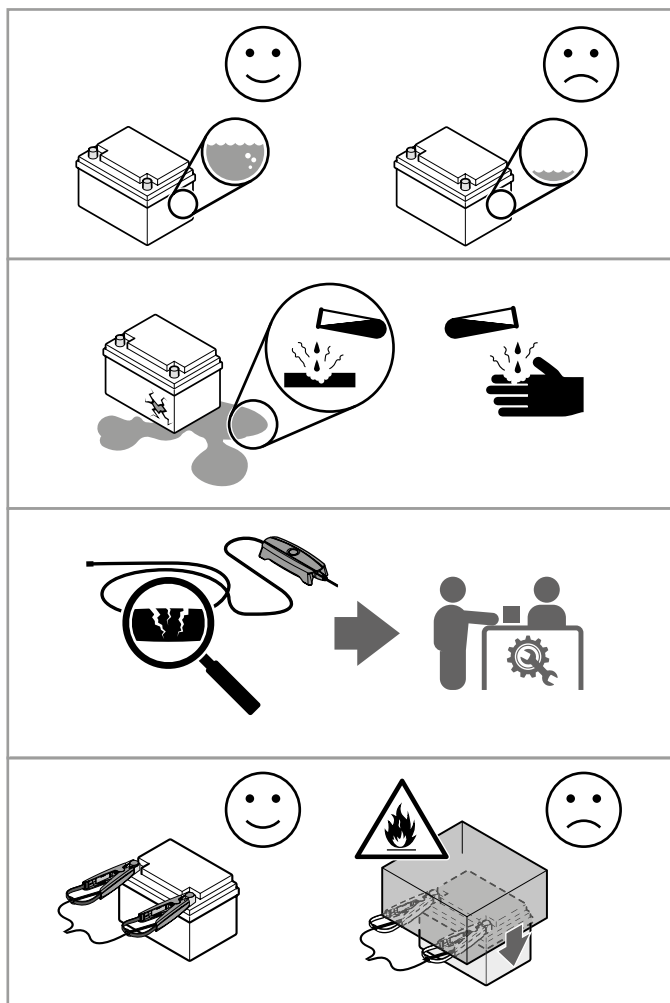


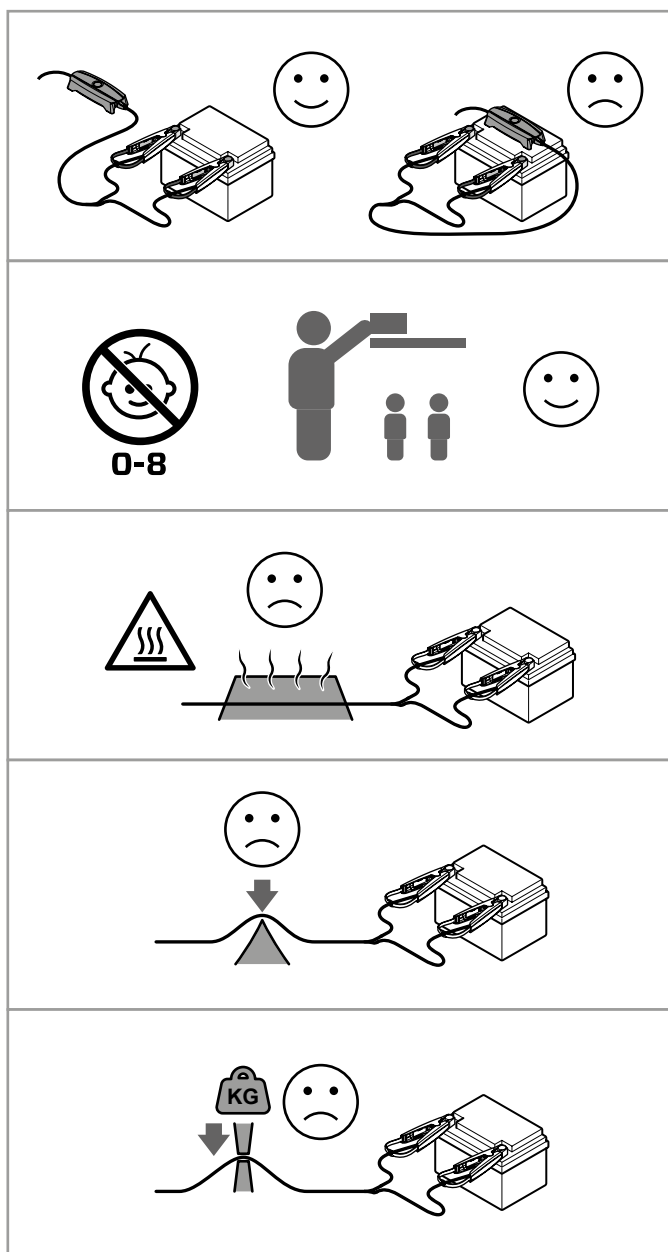
3

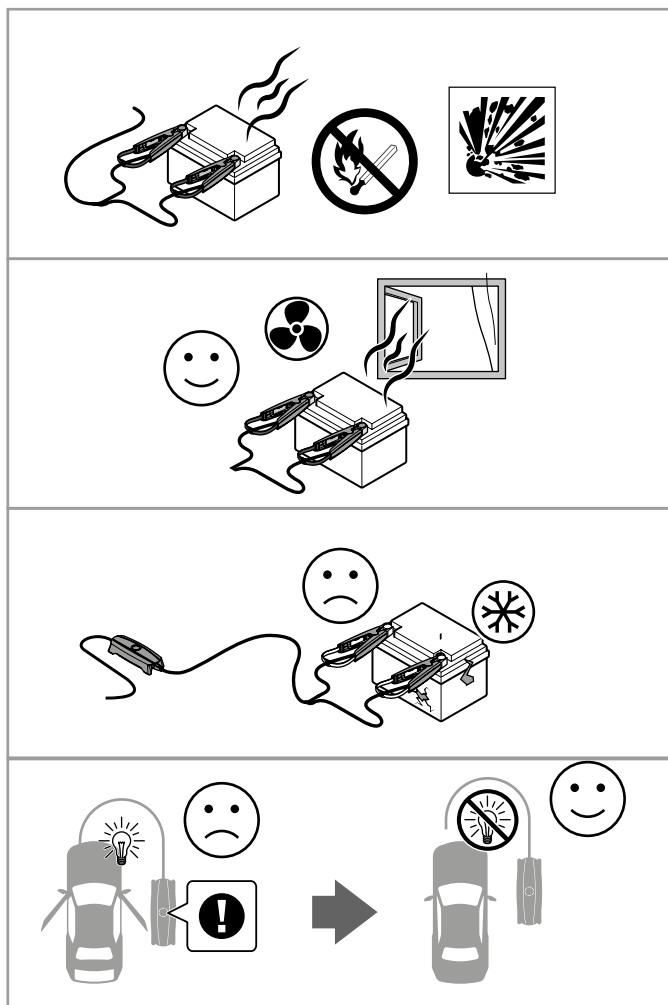


4









Technical specifications

Model number	2005
Input	USB-C, 5VDC-25VDC, 3ADC/60W Max
Output	12VDC, minimum 3.0VDC, 20A/240W Max
USB-A Output	5VDC, 2.4ADC/12W Max
USB-C Output	5VDC, 9VDC, 12VDC, 15VDC, 20VDC, 3ADC/60W Max
Ambient operating temperature	-20°C to +50°C, -4°F to 122°F
Battery types	12V: WET, MF, Ca/Ca, AGM, EFB, GEL, LiFePO ₄
Battery capacity	10Ah-130Ah
Ingress protection	IP54
Net weight (unit with cables)	1.4kg, 3lbs
Dimensions (L x W x H)	248 x 98 x 78mm, 9.8 x 3.9 x 3.1in
Warranty	2 Year
INTERNAL BATTERY	
Battery capacity	66Wh
Cell chemistry	Polymer Lithium-ion
Cell type	Pouch Cell
Discharge temperature	-20°C to +50°C, -4°F to 122°F
Charge temperature	0°C to +45°C, 32°F to 113°F
Shelf Life	1 Year
Life Span	300 Cycles, 80%
MAINS ADAPTER	
Input	100-240VAC, 50-60Hz
Output	USB-C, 5VDC-20VDC, 3ADC, 60W Max
Plug	AC plugs that fit different regions around the world
Cable length	1.0m, 39in
Cable type	USB-C

Limited warranty

CTEK issues a limited warranty to the original purchaser of the product. Depending on the product, the limited warranty period will vary. The limited warranty is not transferable. The warranty applies to manufacturing faults and material defects. The warranty is void if the product has been handled carelessly or repaired by anyone other than CTEK or its authorized representatives. CTEK makes no warranty other than this limited warranty and is not liable for any other costs other than those mentioned above, i.e. no consequential damages. Moreover, CTEK is not obligated to any other warranty other than this warranty.

Revisions

Changes to the product can cause changes to the maintenance work. The descriptions and specifications contained in this manual were in effect at printing. To make sure that the maintenance instructions are complete and up to date, always read the manual published on our website.

Safety

- Do not allow the product to come into contact with any kind of liquid.
- Do not leave the product out in the rain or near a source of moisture.
- Do not drop the product into water. If the Inside of a product comes into contact with water, chemical decomposition may occur, potentially resulting in the product catching on fire, and possibly leading to an explosion.
- Never use or charge swollen, leaky, or damaged product. If your product is abnormal, contact CTEK support or a CTEK authorized dealer for further assistance.
- Never install or remove a product from the product.
- The product should be used at temperatures between -20 and +50°C. Use of product in environments above 50°C can lead to fire or explosion. Using product below -20°C will severely reduce the product's performance. Allow the product to return to a normal operating temperature before use.
- Do not use the product in strong electrostatic or electromagnetic environments. Otherwise, the product management system may malfunction and cause a serious accident during use.
- Never disassemble or pierce a product in any way. Otherwise, it may leak, catch on fire, or explode.
- Electrolytes in product are highly corrosive. If any electrolytes contact your skin or eyes, immediately wash the affected area with fresh running water, and then see a doctor immediately.
- Do not use a product if it was involved in a crash or a heavy bump.
- If a product falls into water during use, take it out immediately and put it in a safe and open area. Maintain a safe distance from it until it is completely dry. Never use it again and dispose of it properly.
- Do not heat product. Put out any product fire using water base extinguisher or water under the premise of personal safety.
- Do not put the product in a microwave oven or in a pressurized container.
- Do not place heavy objects on the product.
- Do not reversely connect the positive and negative terminals of the product. Any abnormal charging of the product may cause overheating, explosion, or fire.
- Do not expose product to direct sunlight for a long time which may cause potential damage. If you want to store it in the vehicle, please store in the trunk.
- Always use a CTEK approved charge cable. CTEK takes no responsibility if a product is charged using a non CTEK charge cable.
- Never leave a product unattended during charging.
- Do not charge a product near fire, other heat sources, or flammable materials or on flammable surfaces such as carpet or wood.
- Do not charge a product immediately after a long heavy load, because the product's temperature may be too high.
- Do not charge a product until it cools down to near room temperature. The product may be unable to charge under a temperature beyond the range of 0 to 45°C. The ideal charging temperature range is 22 to 28 °C.
- Keep the product out of the reach of children and pets.
- If a low-product warning appears, charge the product for long-term storage.
- Do not leave a product near heat sources such as a furnace or heater.
- Do not leave a product inside of a vehicle on hot days.
- Keep the product dry. Never drop the product into water.
- Keep the product away from metal objects such as spectacles, watches, jewelry, and hairpins.

- Never transport a product with power level higher than 30%.
- Dispose of the product in specific recycling boxes only after a complete discharge.
- Do not place the product in regular trash containers. Strictly follow your local regulations regarding the disposal and recycling of product.
- Dispose of a product immediately if it cannot be powered on after over-discharging.
- The charger is only designed for charging batteries according to the technical specification. Do not use the charger for any other purpose.
- Always follow battery manufacturers' user and safety recommendations.
- Never try to charge non-rechargeable batteries.
- Never place the charger on top of the battery or cover the charger when charging.
- Never charge a frozen or damaged battery.
- Never use a charger with damaged cables. Ensure that the cables have not been damaged by hot surfaces, sharp edges or in any other way.
- Never place a fan-cooled product so that dust, dirt or similar can be sucked into the fan.
- A damaged cable must be replaced by a CTEK representative using an original part supplied by CTEK. A detachable cable can be replaced by the user using an original part supplied by CTEK.
- Never extend the charger cable to a total length of more than 3.0 m. Use only original parts supplied by CTEK.
- Extension of output cable may cause electromagnetic interference.
- Connection to the mains supply must be in accordance with the national regulations for electrical installations.
- Chargers with grounded mains plug must only be connected to a grounded socket outlet.
- During charging, lead-acid batteries can emit explosive gases. Prevent sparks close to the battery. Provide for good ventilation.
- Chargers with IP-class lower than IPX4 are designed for indoor use. See technical specification. Do not expose to rain or snow.
- Connect the charger to the battery's positive pole and then to the negative pole. Then connect the charger to mains supply.
- For batteries mounted inside a vehicle, connect the charger to the battery's positive pole and then to the vehicle chassis remote from the fuel pipe. Then connect the charger to mains supply.
- Disconnect the charger from the mains supply. Next remove the negative connection (vehicle chassis) and then the positive connection.
- Don't leave any battery unattended for a longer period of time during charging. If any error occurs disconnect the charger manually.
- **(IEC 7.12 ed.5)** This appliance is not intended for use by persons (including children) with reduced physical, sensory or mental capabilities, or lack of experience and knowledge, unless they have been given supervision or instruction concerning use of the appliance by a person responsible for their safety. Children should be supervised to ensure that they do not play with the appliance.
- **(EN 7.12)** This appliance can be used by children aged from 8 years and above and persons with reduced physical, sensory or mental capabilities, or lack of experience and knowledge if they have been given supervision or instruction concerning use of the appliance in a safe way and understand the hazards involved. Children must not play with the appliance. Cleaning and user maintenance must not be made by children without supervision.