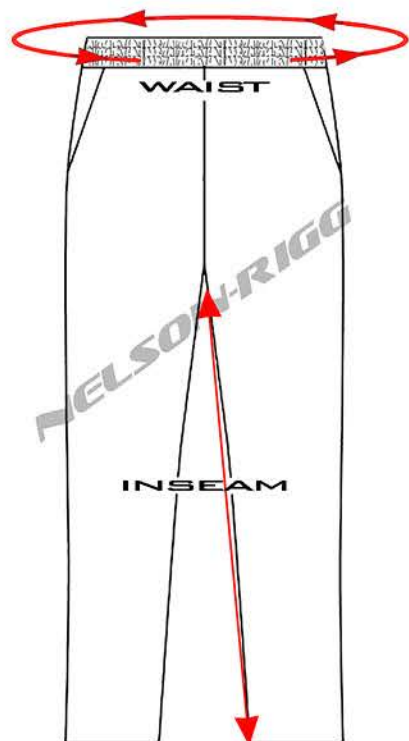
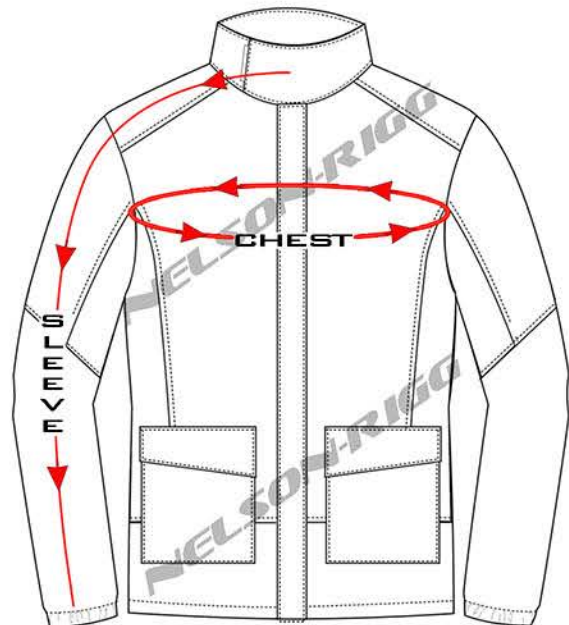


WATERPROOF GEAR SIZE CHART



These suits jacket/pants are sized to fit over riding gear. We recommend staying with the size you would choose in normal clothing when selecting a size in our rain suits. If you ride with body armor or padding, we then suggest going up one size.

HOW TO MEASURE:

- For the best results, have another person measure using a flexible measuring tape .
- The charts below are a general guideline. If your measurements exceed any range, select a size up.
- Keep in mind these are body measurements, not garment measurements.

Chest:

Measure under arms around the fullest part of the chest. For women, use the largest chest dimension.

Arm Length:

Measure from center back of neck, across shoulder, and down to wrist bone.

Waist:

Measure around natural waistline (pant size). For bodies with a larger belly or hips, use the largest measurement.

Inseam:

Measure from bottom of crotch to one inch above the floor.

SIZE	JACKET		PANTS	
	CHEST	SLEEVE	ELASTIC WAIST	INSEAM
S	32" - 38"	35.5"	28" - 34"	31"
M	36" - 42"	37"	30" - 36"	33"
L	40" - 46"	37.5"	34" - 40"	34"
XL	44" - 50"	38"	38" - 44"	35"
XXL	48" - 54"	38.5"	40" - 46"	35"
3XL	52" - 58"	39.5"	44" - 50"	36"
4XL	56" - 62"	41"	48" - 56"	36"