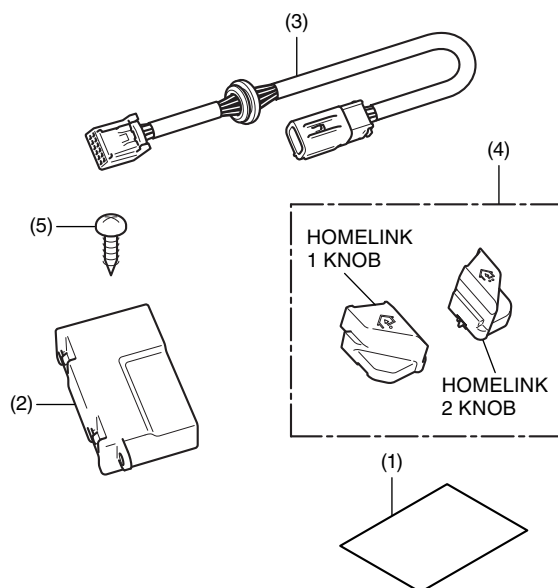


 INSTALLATION INSTRUCTIONS	Accessory	Application	Publication No.
	HOMELINK® P/N 08U77-MKC-A00	GL1800/B/BD/D/DA	MII 16426
			Issue Date January 2018

Honda Dealer: Please give a copy of these instructions to your customer.

PARTS LIST



No.	Description	Qty
(1)	Installation instructions URL	1
(2)	Homelink® unit	1
(3)	Sub harness	1
(4)	Homelink® knob set	1
(5)	4 mm screw	2

TOOLS AND SUPPLIES REQUIRED

Phillips screwdriver

Dish soap solution (Water:Dish soap / 100:1)

Shop towel

Torque wrench

TORQUE CHART

Tighten all screws, bolts, and nuts to their specified torque values. Refer to the Service Manual for the torque values of the removed parts.

Item	N·m	kgf·m	lbf·ft
4 mm screw	1	0.1	0.7

INSTALLATION

▲ CAUTION

- To prevent burns, allow the engine, exhaust system, radiator, etc., to cool before installing the accessory.

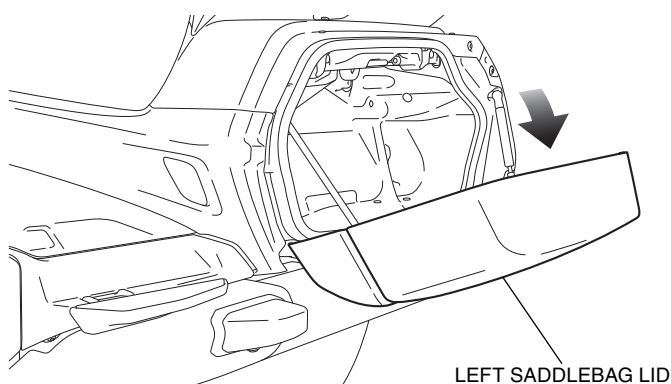
NOTE:

- Disconnect the negative (-) cable from the battery before installing this accessory.
- The memory of the clock will be erased when you disconnect the battery. Reset the clock after reconnecting the battery.
- Reinstall the removed parts on the motorcycle and make sure that the wires and harnesses are not pinched.
- Although the illustration is of GL1800/D/DA, use the same procedures for other models.

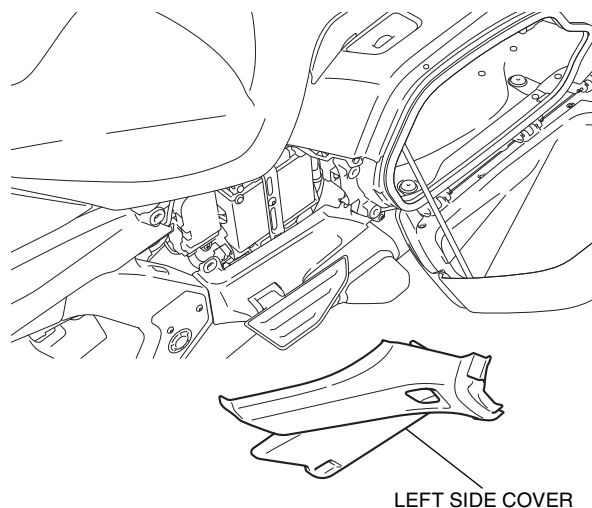
- Open the left saddlebag lid as shown.

- Repeat on the right side.**

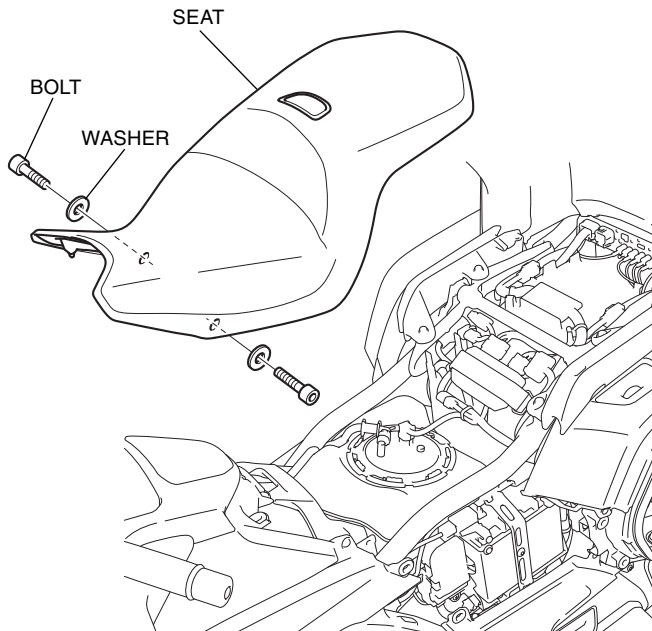
<Left side>



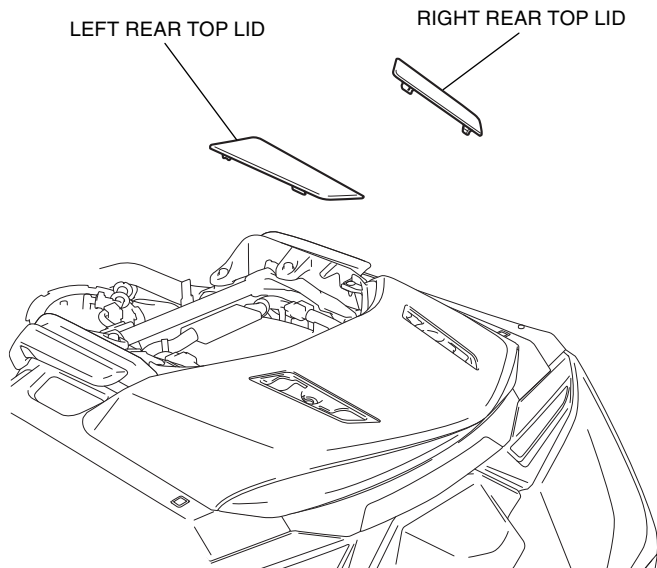
- Remove the left side cover as shown, and disconnect the negative (-) cable of the battery.



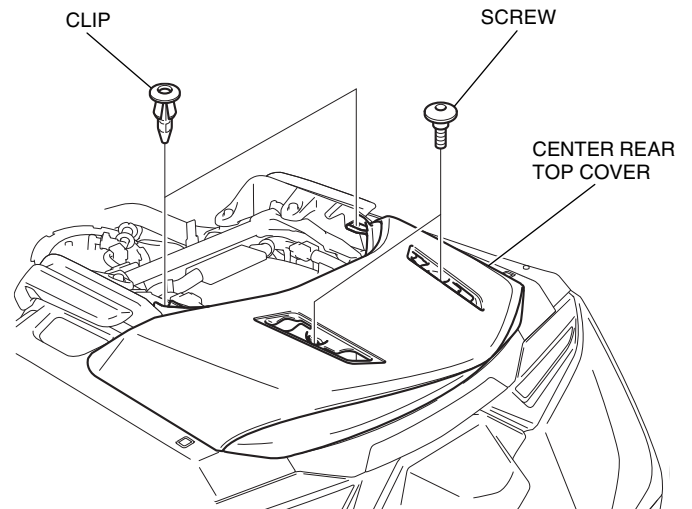
3. Remove the right side cover in the same manner as the left side.
4. Remove the seat as shown.
 - **Disconnect the connector for GL1800/D/DA.**



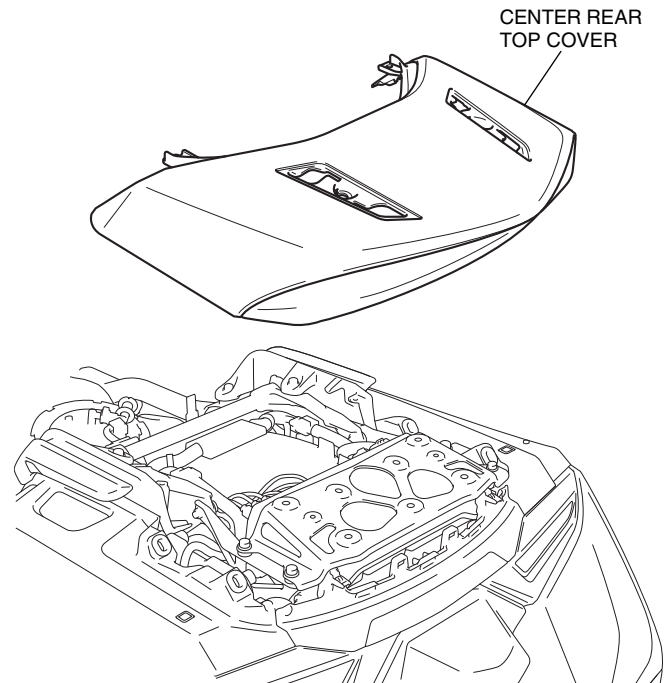
5. Remove the right and left rear top lid as shown.
 - **Perform this step on GL1800B/BD only.**



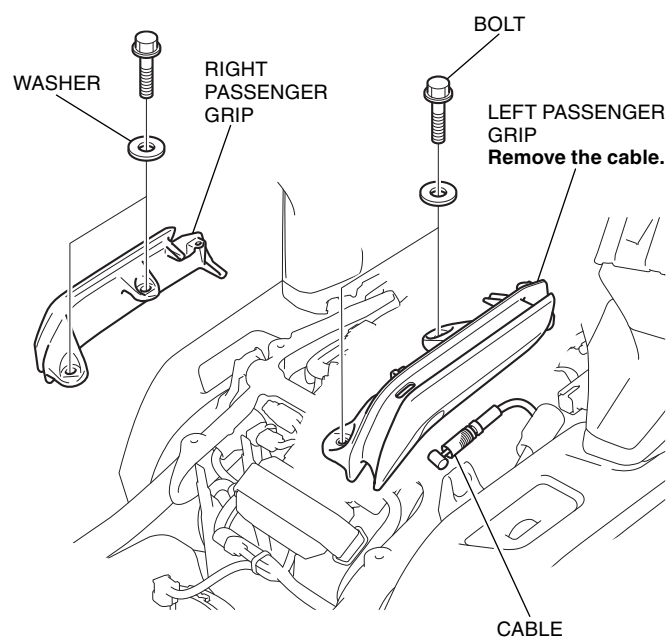
6. Remove the parts as shown.
 - **Perform this step on GL1800B/BD only.**



7. Remove the center rear top cover as shown.
 - **Perform this step on GL1800B/BD only.**

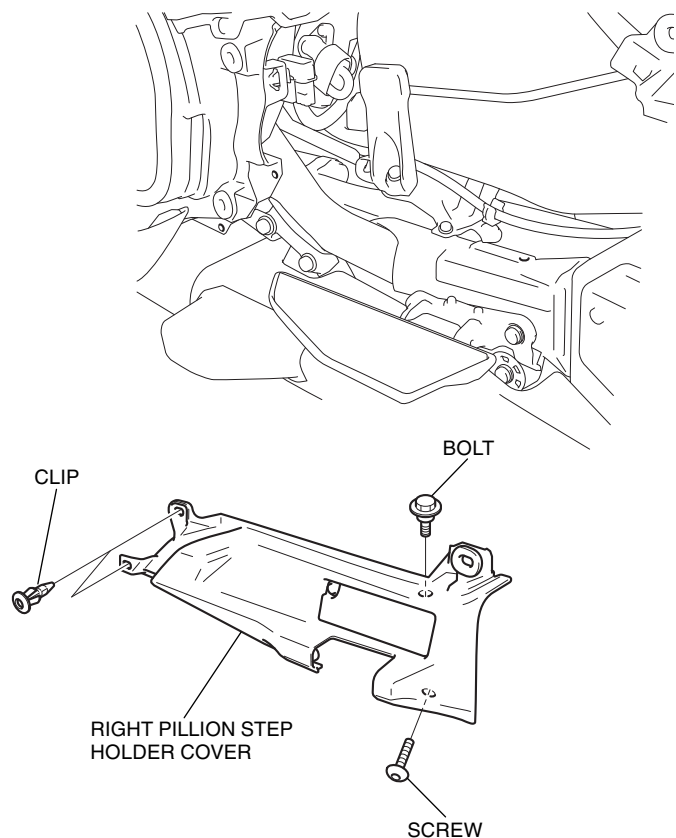


8. Remove the right and left passenger grip as shown.



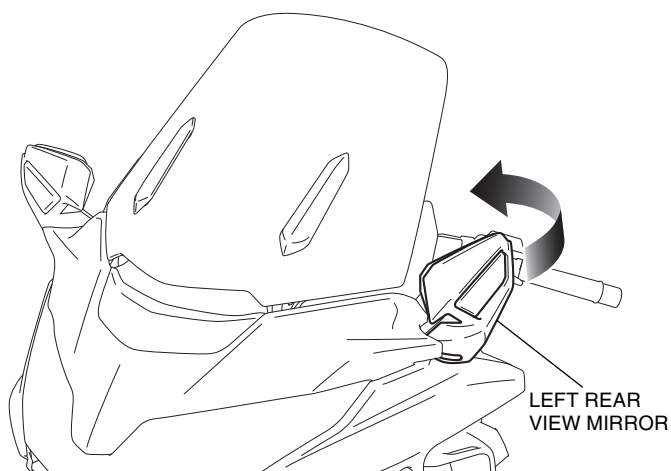
9. Remove the right pillion step holder cover as shown.

<Right side>



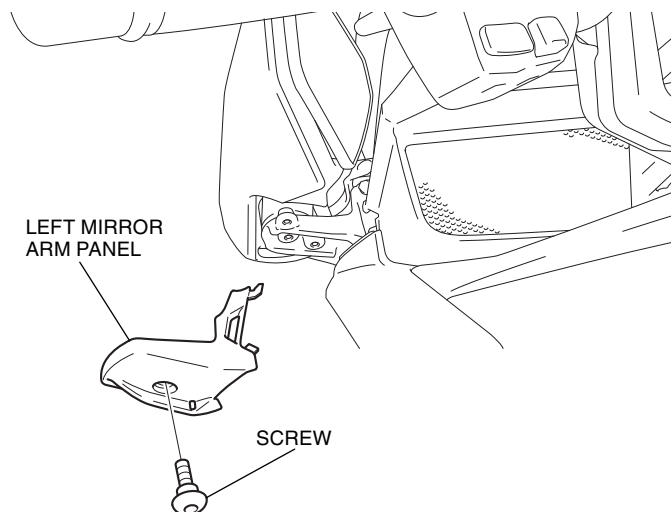
10. Fold down the left rear view mirror backward as shown.

<Left side>



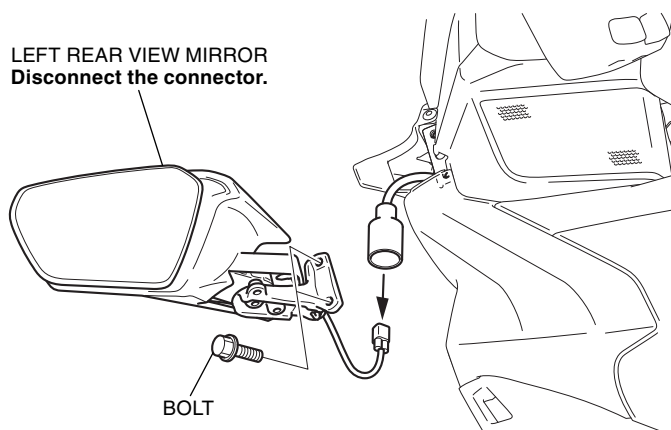
11. Remove the left mirror arm panel as shown.

<Left side>



12. Remove the left rear view mirror as shown.

LEFT REAR VIEW MIRROR
Disconnect the connector.

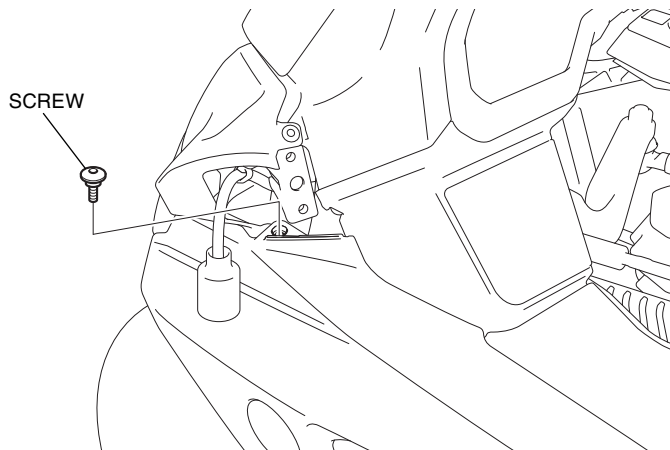


13. Remove the right mirror arm panel and right rear view mirror in the same manner as the left side.

14. Remove the screw as shown.

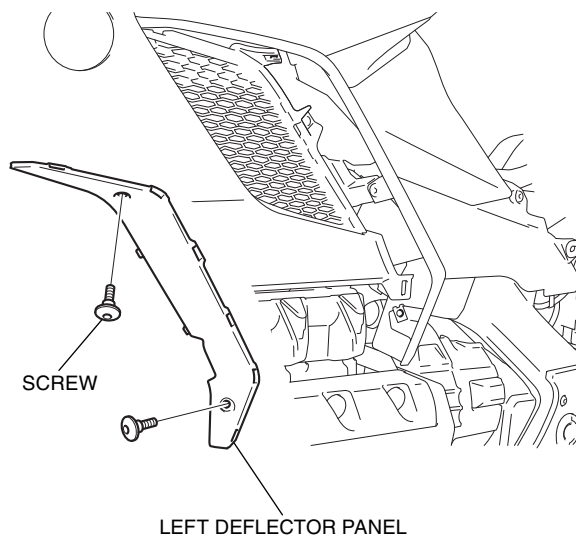
- Repeat on the right side.

<Left side>

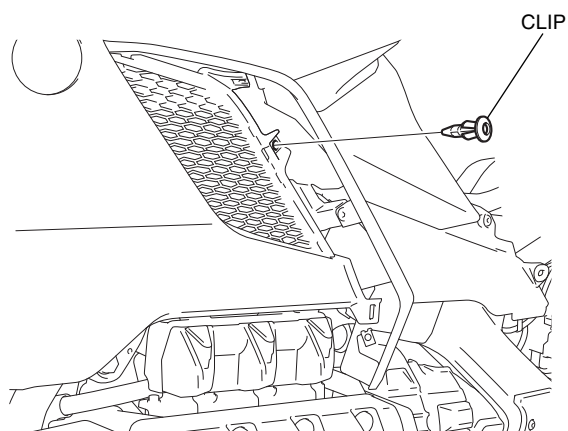


15. Remove the left deflector panel as shown.

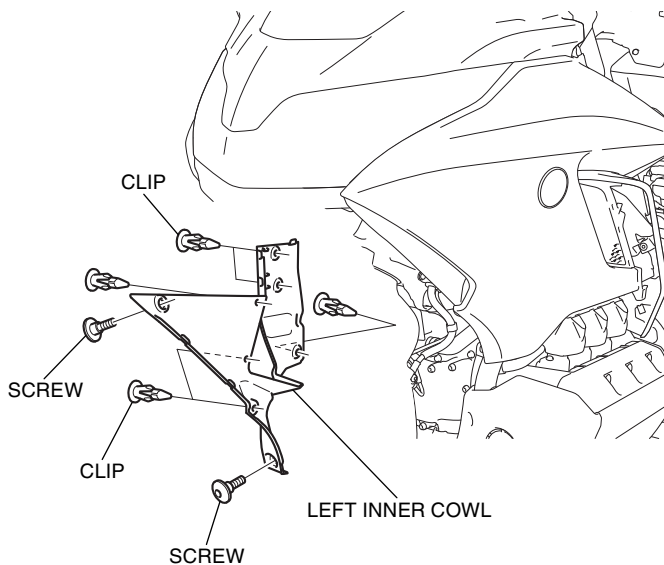
<Left side>



16. Remove the clip as shown.

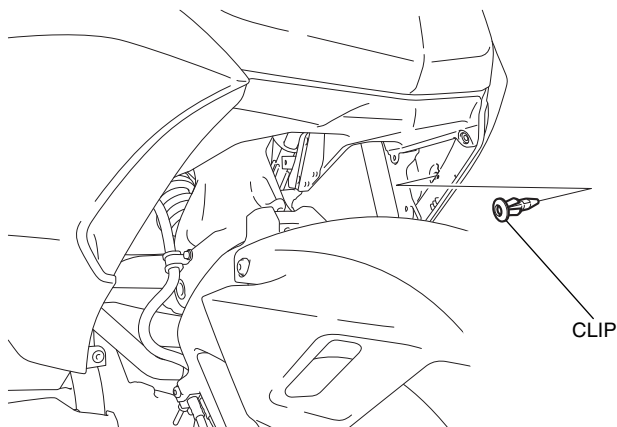


17. Remove the left inner cowl as shown.



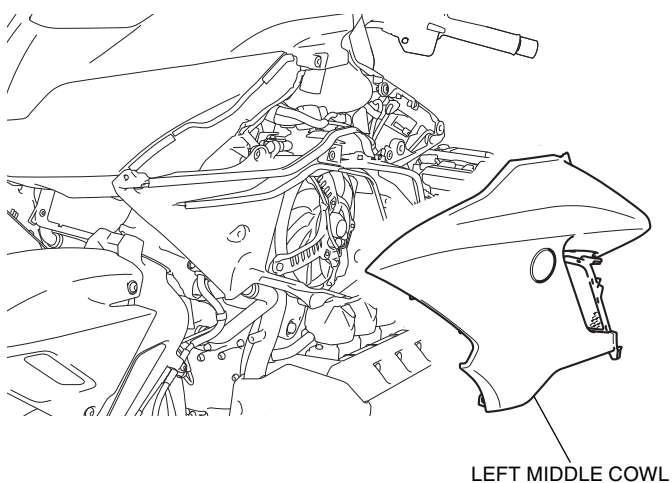
18. Remove the clip as shown.

<Left side>



19. Remove the left middle cowl as shown.

<Left side>

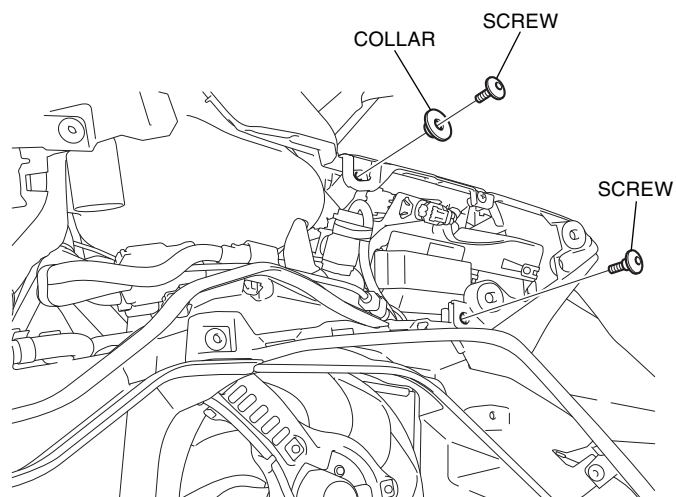


20. Remove the right deflector panel, right inner cowl and right middle cowl in the same manner as the left side.

21. Remove the parts as shown.

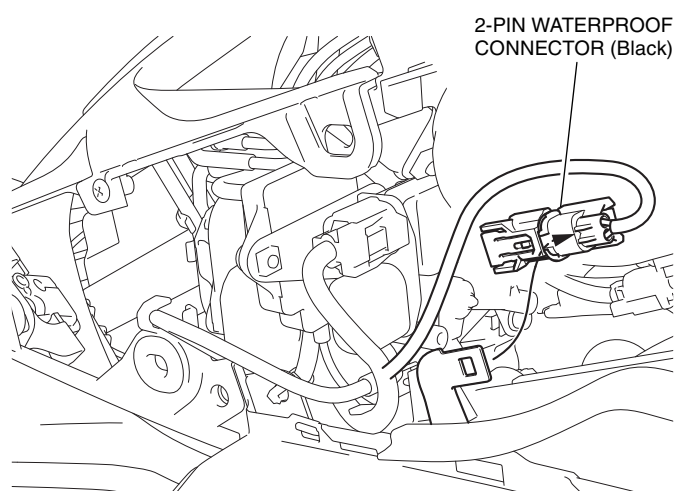
- Repeat on the right side.

<Left side>

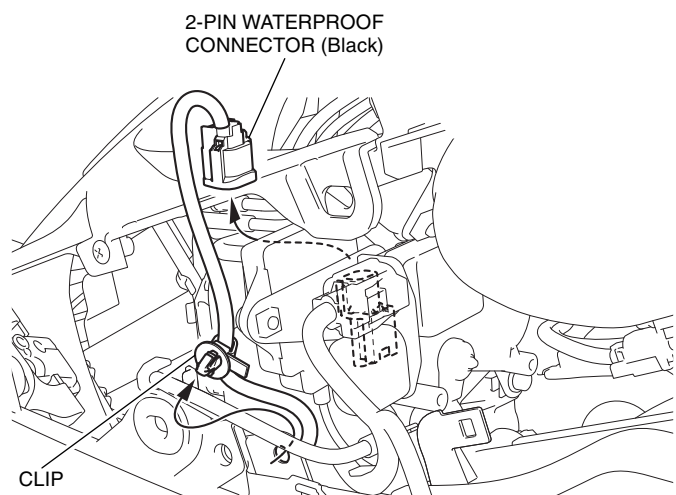


22. Remove the 2P black connector as shown.

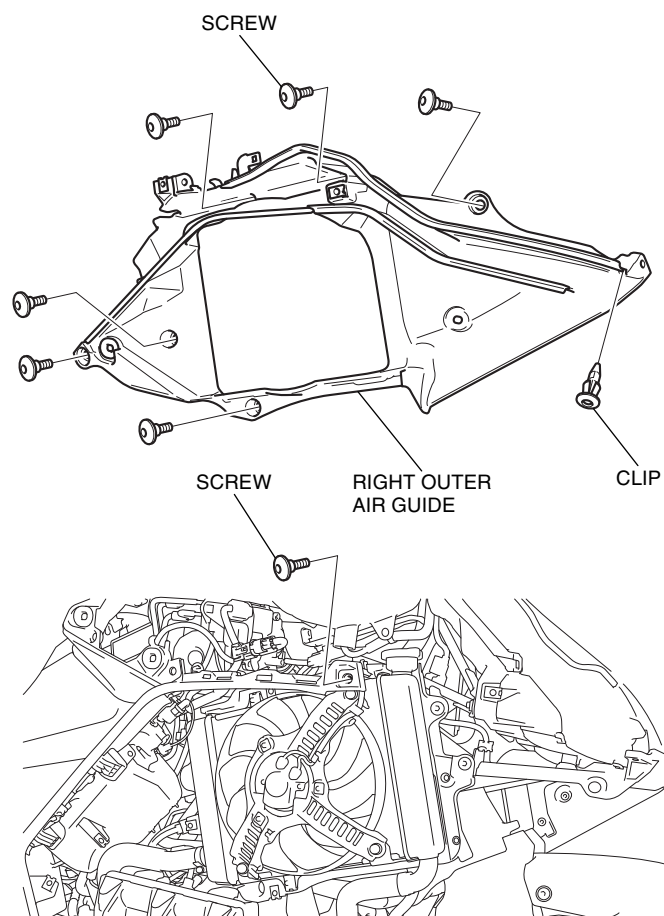
<Right side>



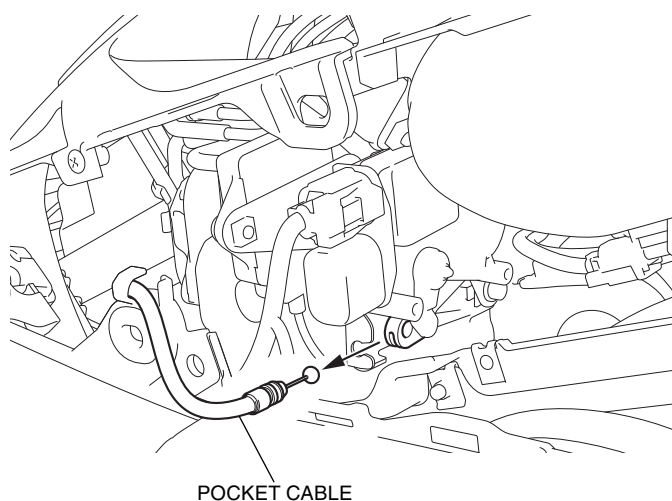
23. Remove the clip and disconnect the connector as shown.



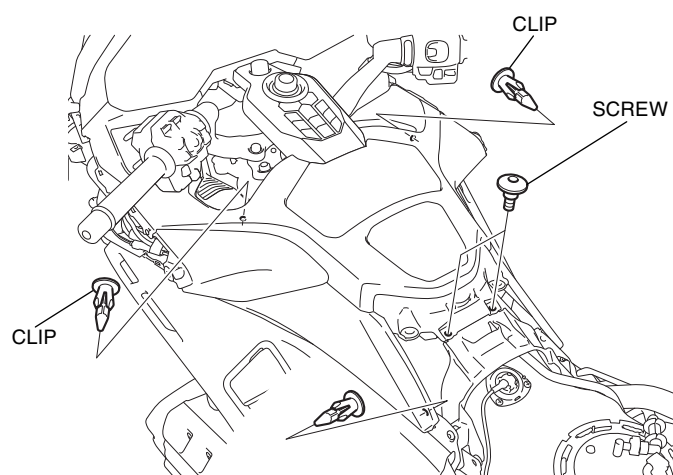
24. Remove the right outer air guide as shown.



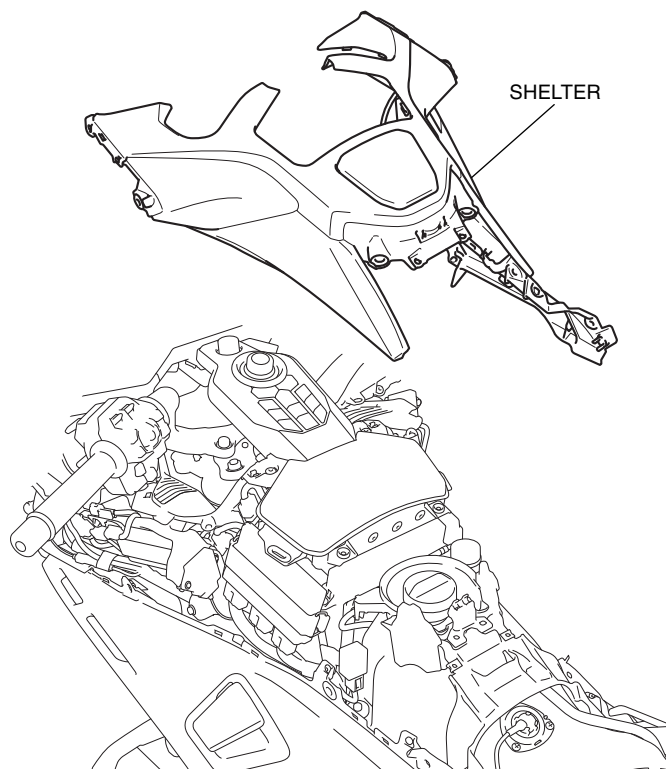
25. Remove the pocket cable as shown.



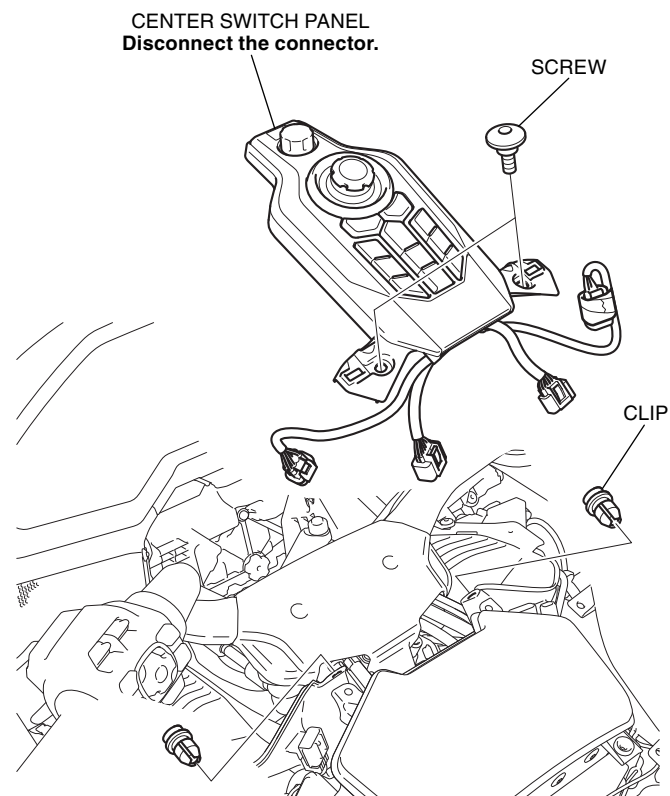
26. Remove the parts as shown.



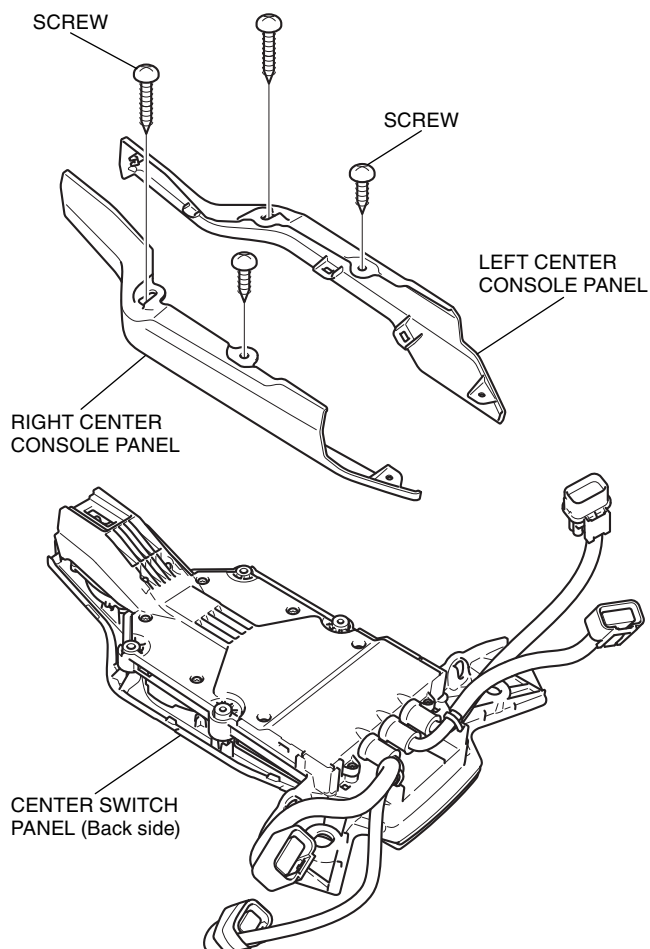
27. Remove the shelter as shown.



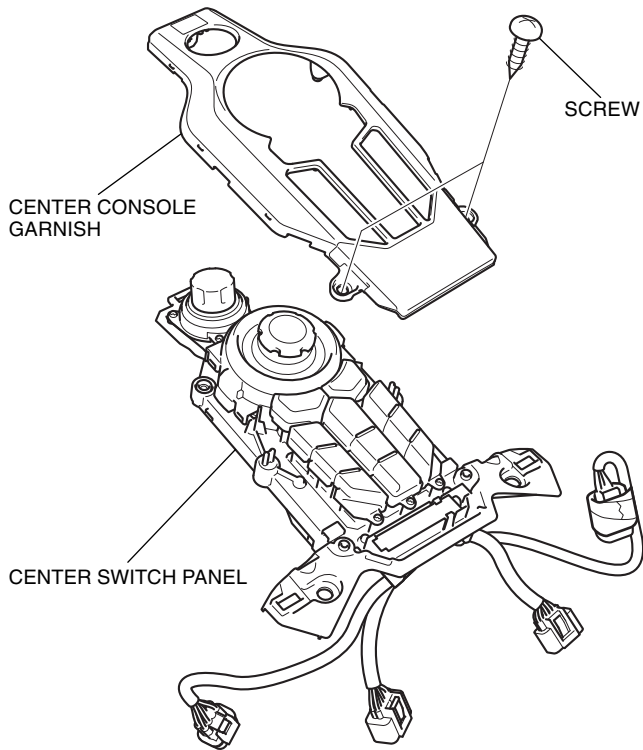
28. Remove the center switch panel as shown.



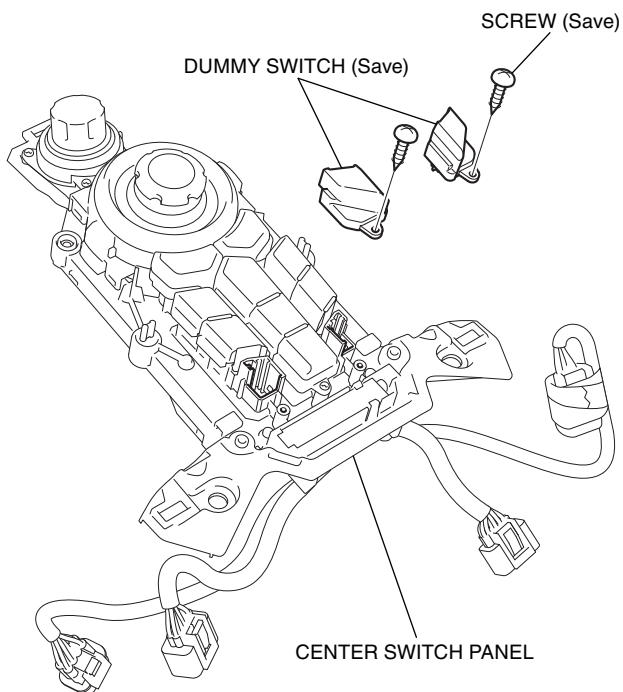
29. Remove the right and left center console panel as shown.



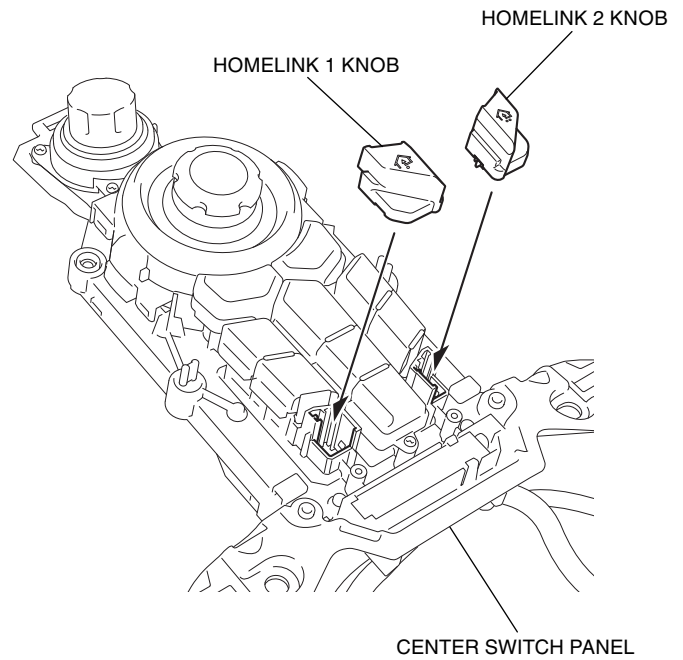
30. Remove the center console garnish as shown.



31. Remove the dummy switch as shown.



32. Install the Homelink® knobs as shown.

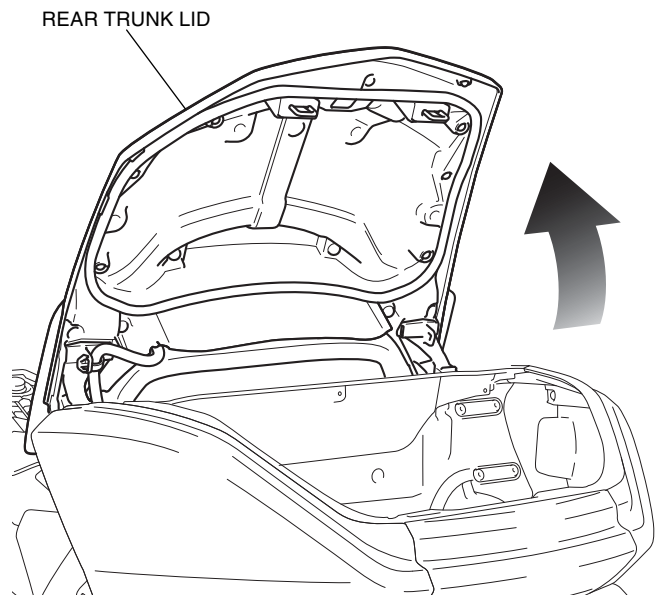


33. Install the center console garnish, right and left center console panel in the reverse order of removal.

34. Install the center switch panel in the reverse order of removal.

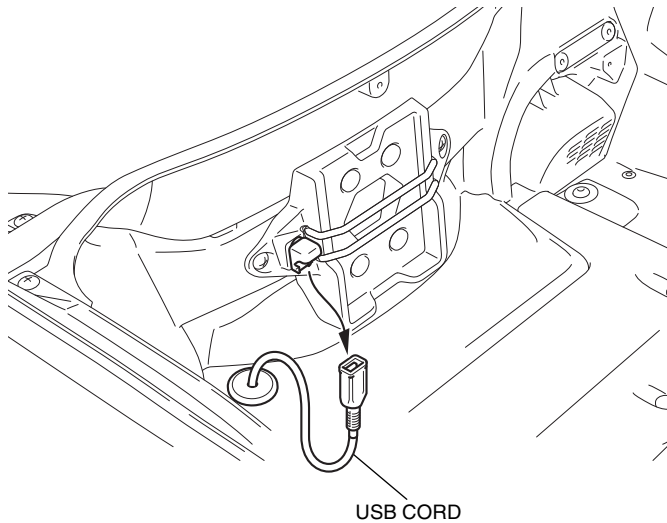
35. Open the rear trunk lid as shown.

- Perform this step on GL1800/D/DA only.
- Refer to the Owner's Manual and using an emergency trunk cable to open the rear trunk lid.



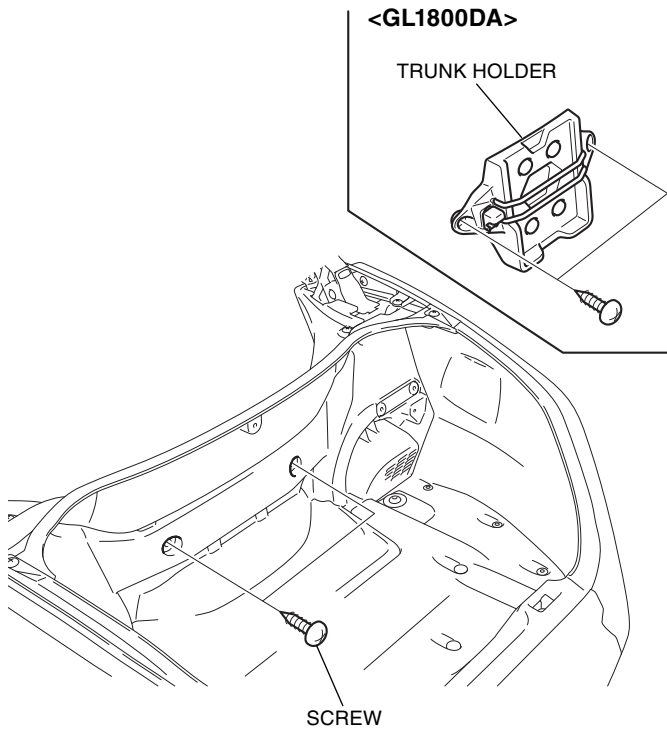
36. Remove the USB cord as shown.

- Perform this step on GL1800DA only.



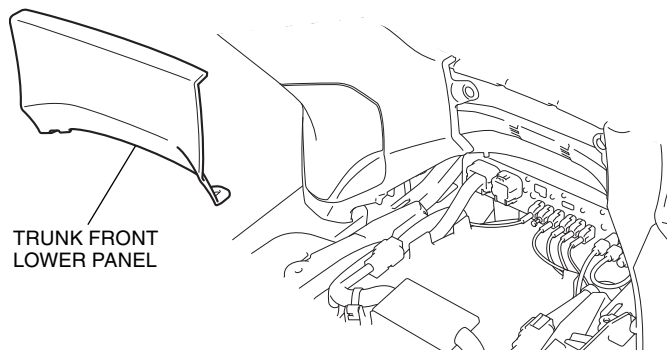
37. Remove the parts as shown.

- Perform this step on GL1800/D/DA only.



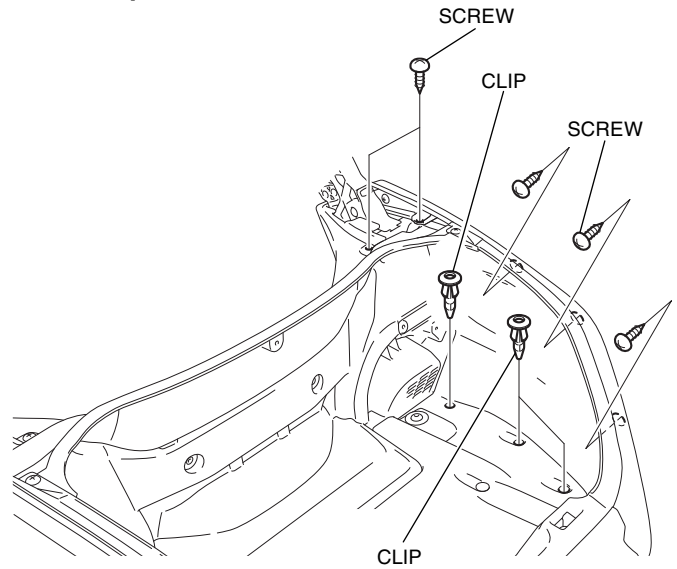
38. Remove the trunk front lower panel as shown.

- Perform this step on GL1800/D/DA only.



39. Remove the parts as shown.

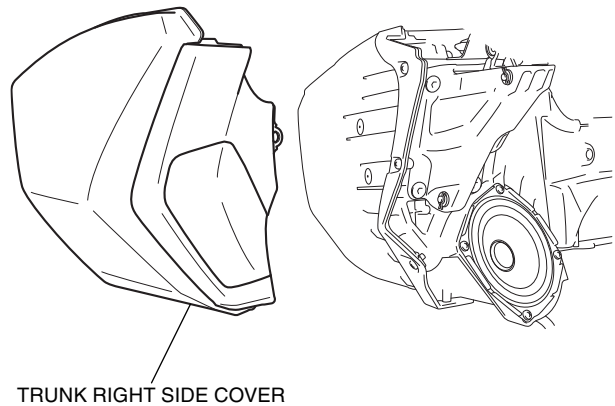
- Perform this step on GL1800/D/DA only.
- Repeat on the left side.



40. Remove the trunk right side cover as shown.

- Perform this step on GL1800/D/DA only.
- Repeat on the left side.

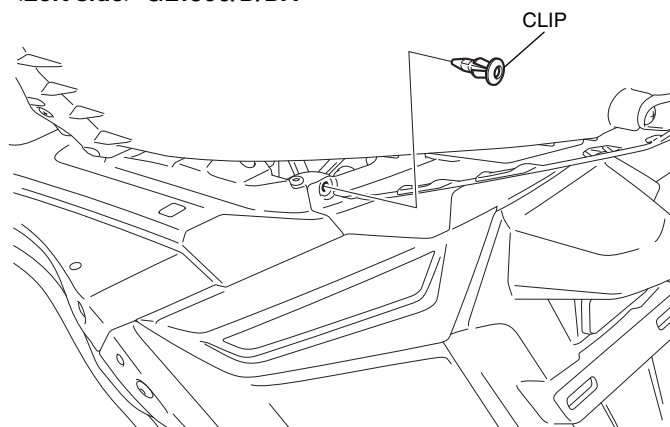
<Right side>



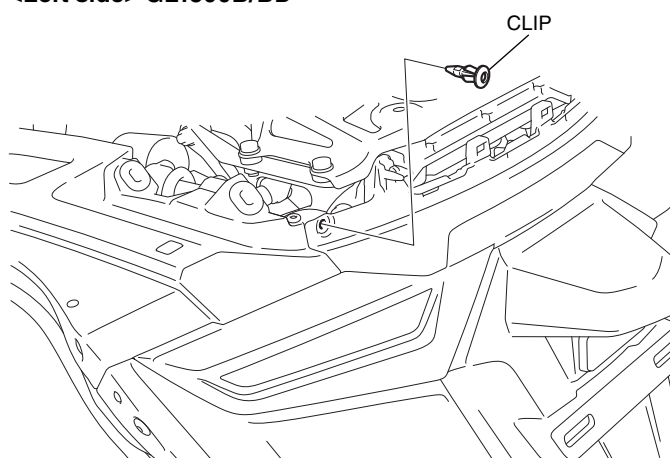
41. Remove the clips as shown.

- Repeat on the right side.

<Left side> GL1800/D/DA

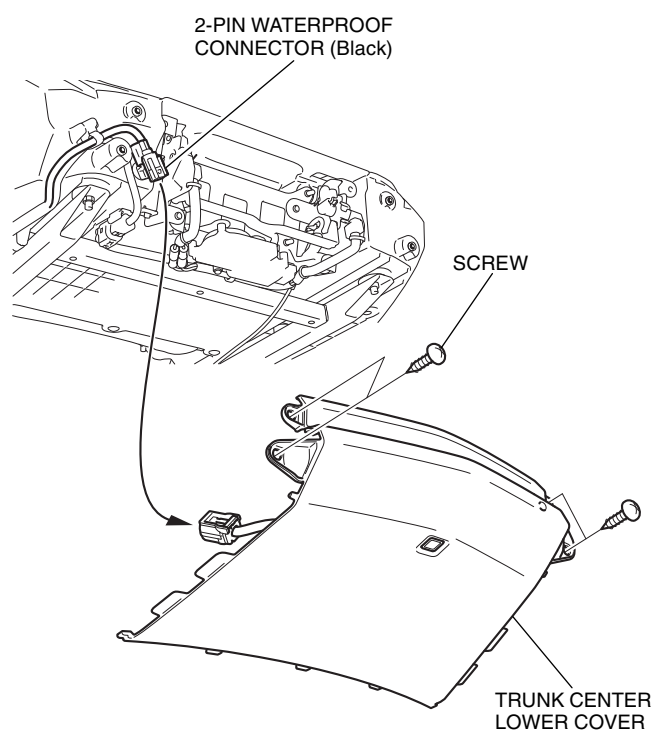


<Left side> GL1800B/BD

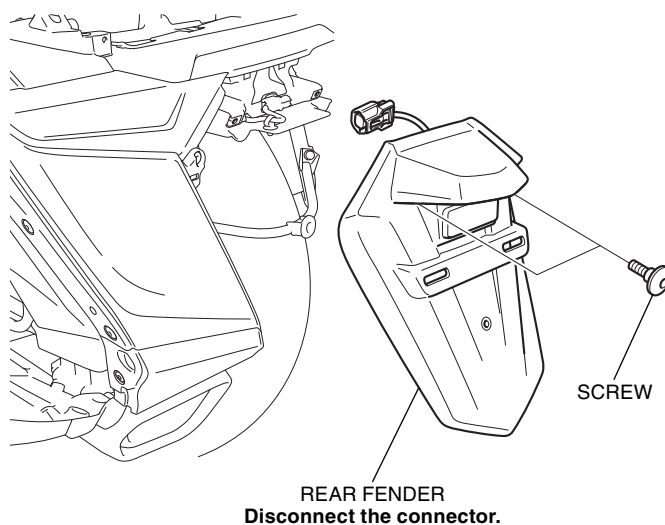


42. Disconnect the 2P black connector and remove the trunk center lower cover as shown.

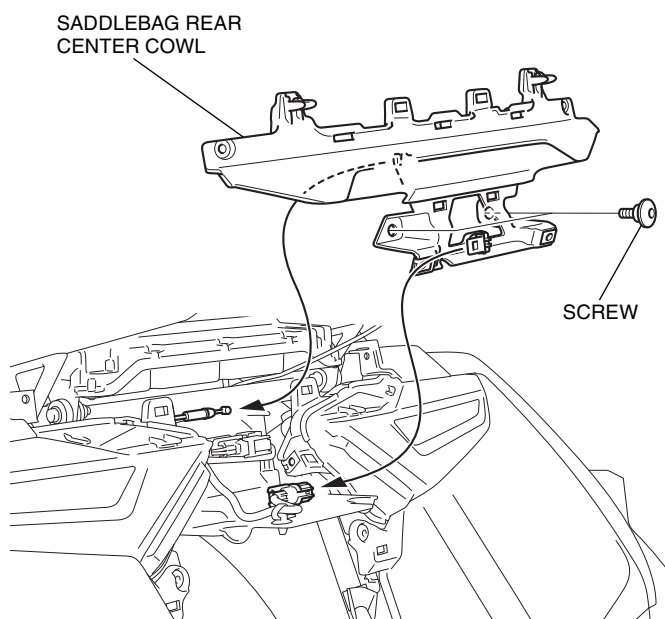
- Perform this step on GL1800/D/DA only.



43. Remove the rear fender as shown.

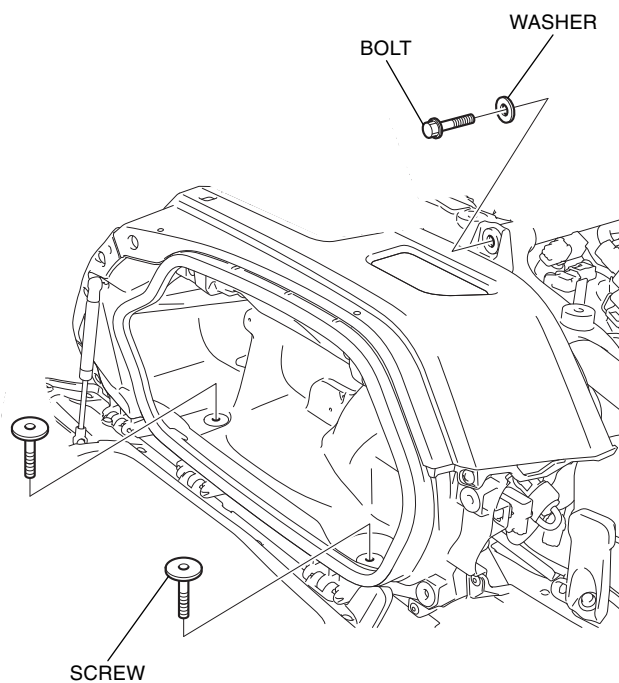


44. Remove the saddlebag rear center cowl as shown.

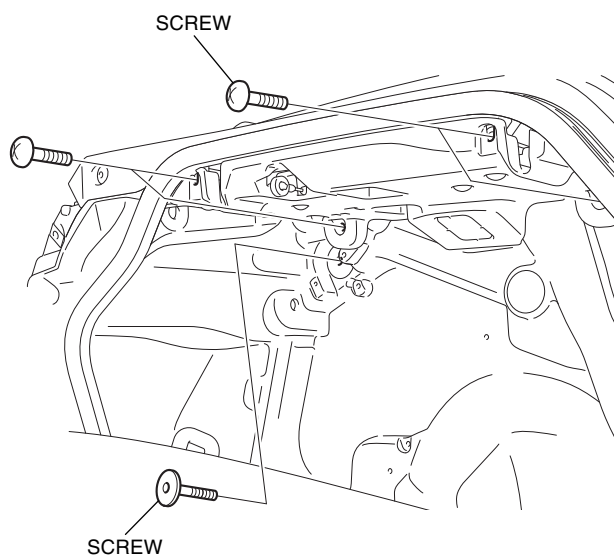


45. Remove the parts as shown.

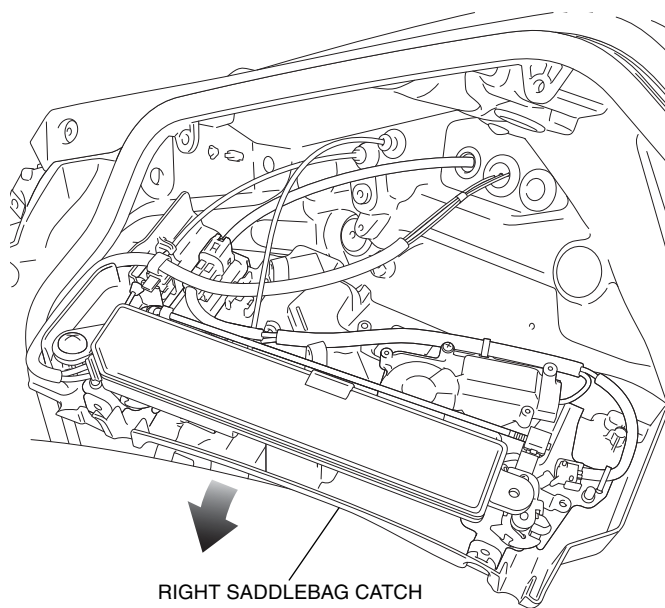
<Right side>



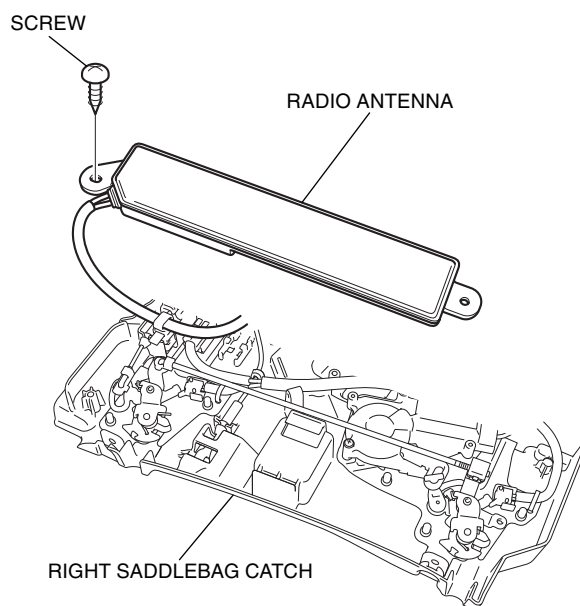
46. Remove the screws as shown.



47. Move the right saddlebag catch as shown.

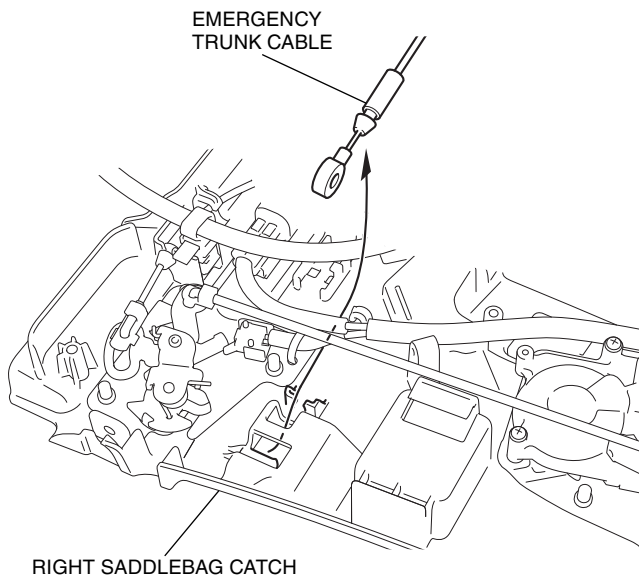


48. Remove the radio antenna as shown.

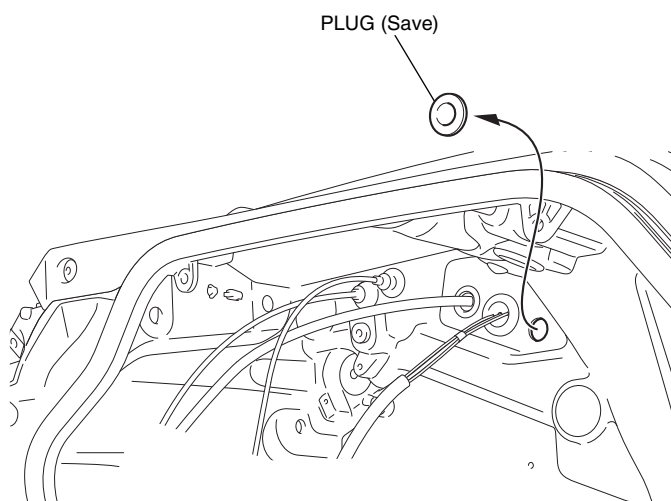


49. Remove the emergency trunk cable as shown.

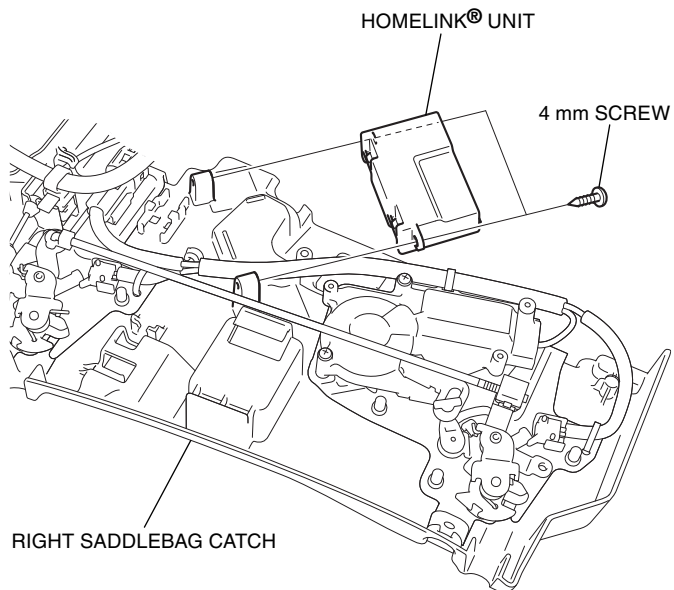
- Perform this step on GL1800/D/DA only.



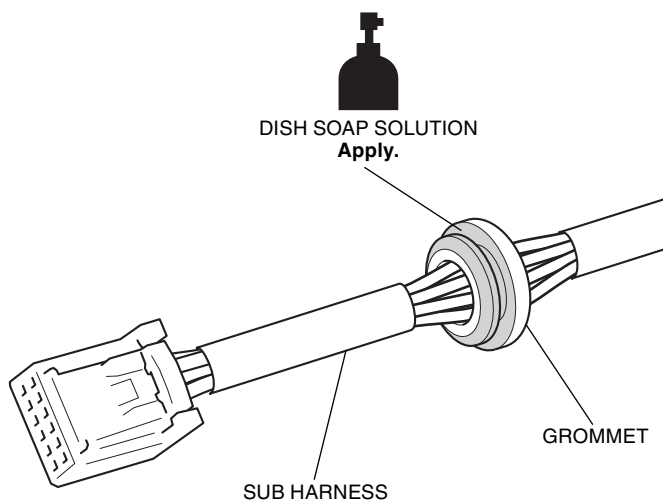
50. Remove the plug as shown.



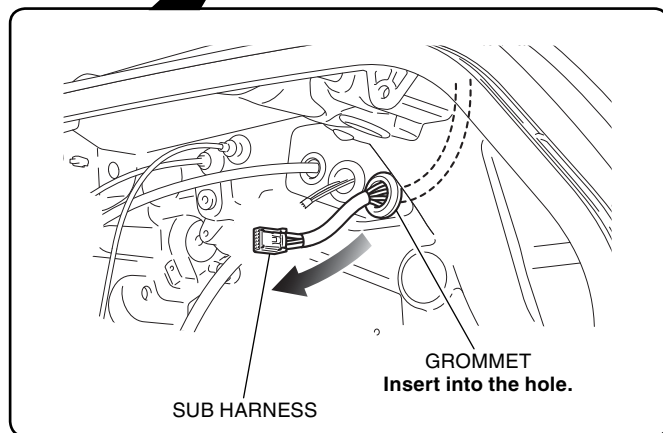
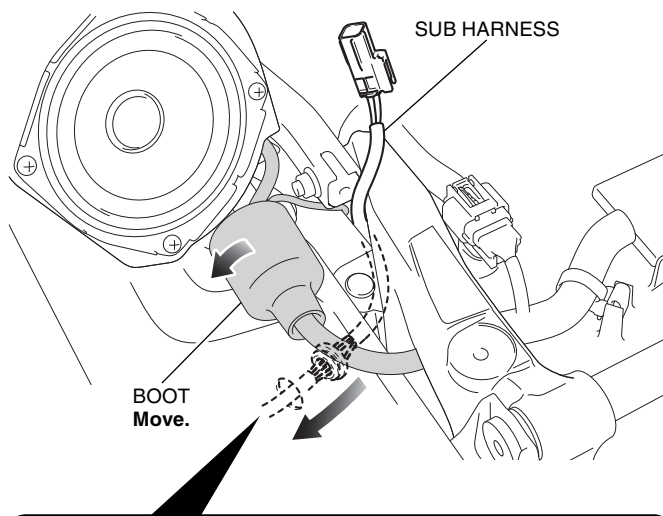
51. Install the Homelink® unit as shown.



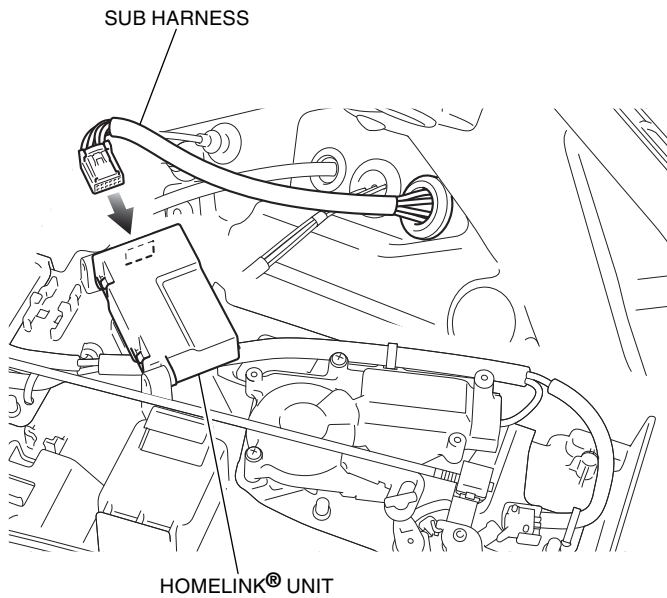
52. Apply dish soap solution to the grommet at the position shown.



53. Move the right saddlebag and route the sub harness as shown.

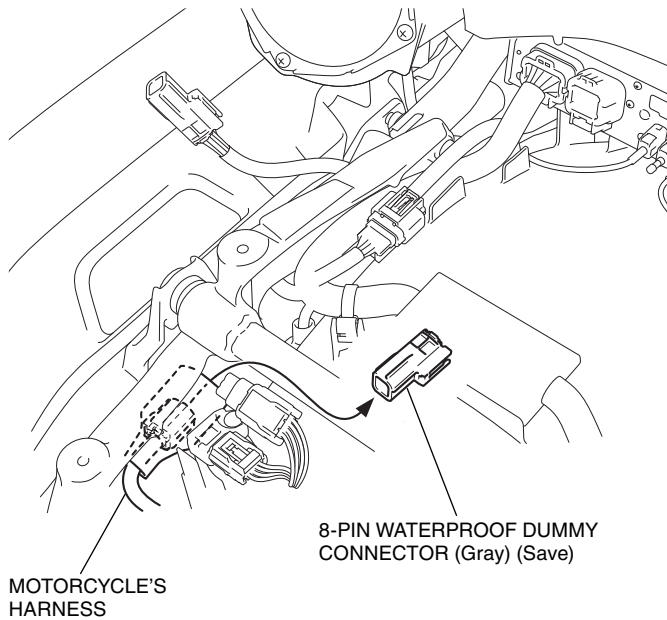


54. Connect the sub harness to the Homelink® unit as shown.

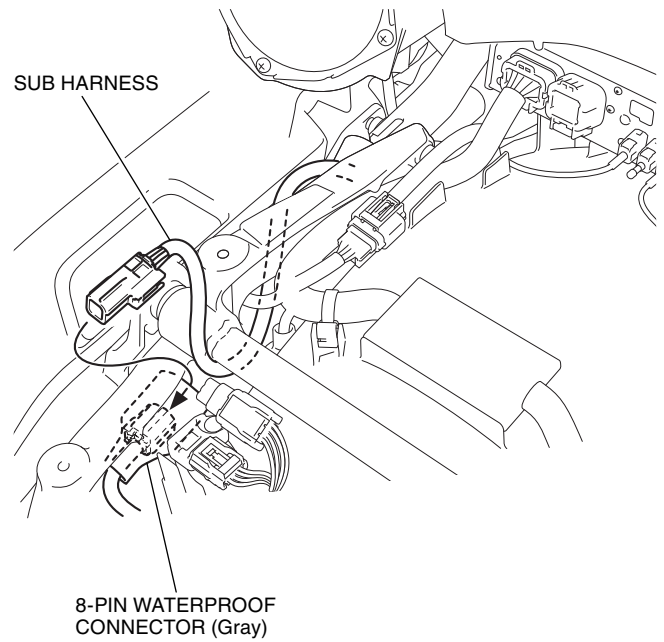


55. Install the right saddlebag, emergency trunk cable and right saddlebag catch in the reverse order of removal.

56. Remove the dummy connector as shown.



57. Route and connect the sub harness as shown.



58. Install the motorcycle's parts in the reverse order of removal.

- **Confirm that any wire harness is not caught or too tight.**

59. Check the Homelink®, headlight and the other lights for proper operation.