

HONDA

INSTALLATION INSTRUCTIONS

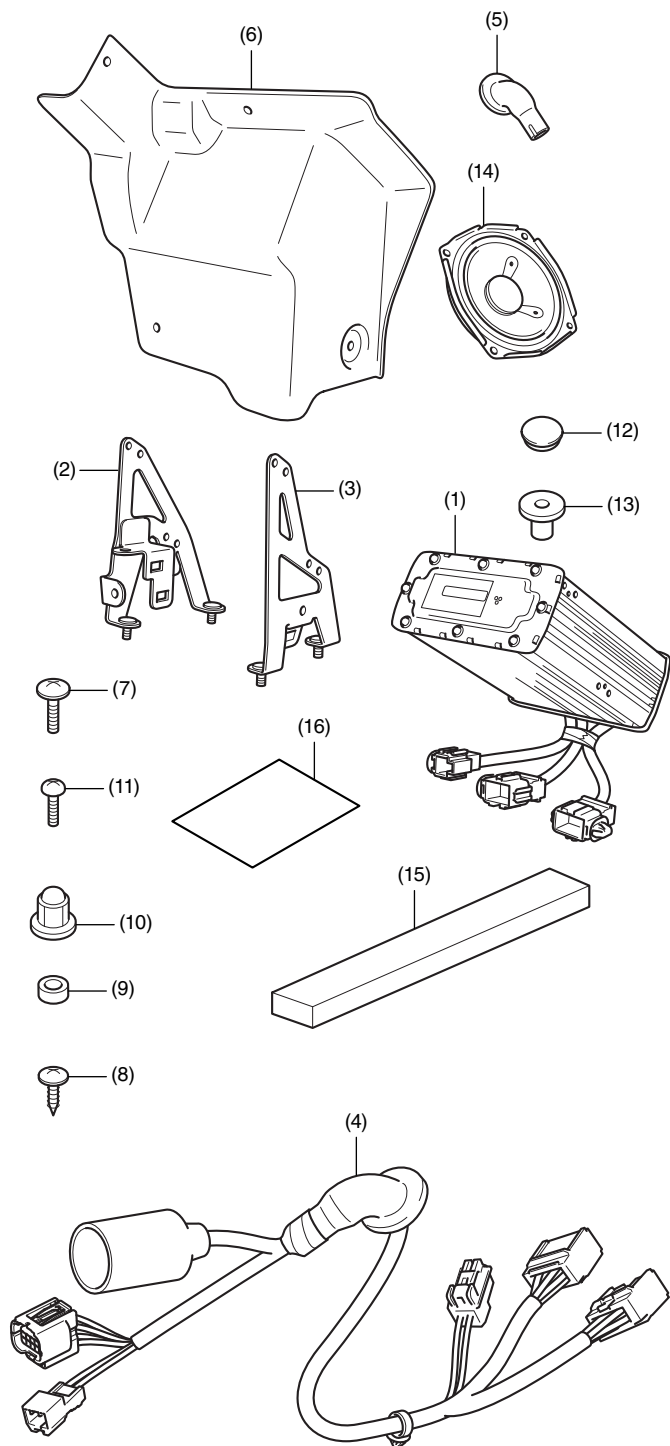
Accessory
**POWER AMPLIFIER &
SPEAKER KIT**
P/N 08A83-MKC-A00

Application
GL1800/D/DA
**GL1800B/BD (go to
page 18)**

Publication No.
MII 16426
Issue Date
January 2018

Honda Dealer: Please give a copy of these instructions to your customer.

PARTS LIST



No.	Description	Qty
(1)	Amplifier unit	1
(2)	Stay A	1
(3)	Stay B	1
(4)	Sub harness	1
(5)	Grommet	3
(6)	Cover	1
(7)	5 mm screw (long)	4
(8)	5 mm screw (short)	2
(9)	Collar	9
(10)	5 mm nut	5
(11)	4 mm screw	9
(12)	Hole plug	1
(13)	Well nut	1
(14)	Speaker	4
(15)	Sponge seal rubber	1
(16)	Installation Instructions URL	1

TOOLS AND SUPPLIES REQUIRED

Box-end wrench (8 mm)
Open-end wrench (8 mm)
Phillips screwdriver
Electric drill
Drill bit (6 mm)
Hole saw (30 mm)
Dish soap solution (Water:Dish soap - 100:1)
Isopropyl alcohol
Scissors
Shop towel
Torque wrench

TORQUE CHART

Tighten all screws, bolts, and nuts to their specified torque values. Refer to the Service Manual for the torque values of the removed parts.

Item	N-m	kgf-m	lbf-ft
4 mm screw	1	0.1	0.7
5 mm screw	4.2	0.4	3.1
5 mm nut	5.2	0.5	3.8

INSTALLATION

▲ CAUTION

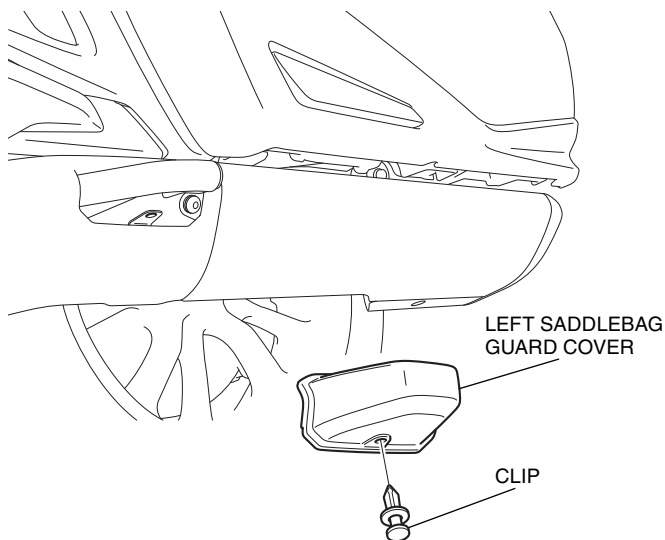
- To prevent burns, allow the engine, exhaust system, radiator, etc., to cool before installing the accessory.

NOTE:

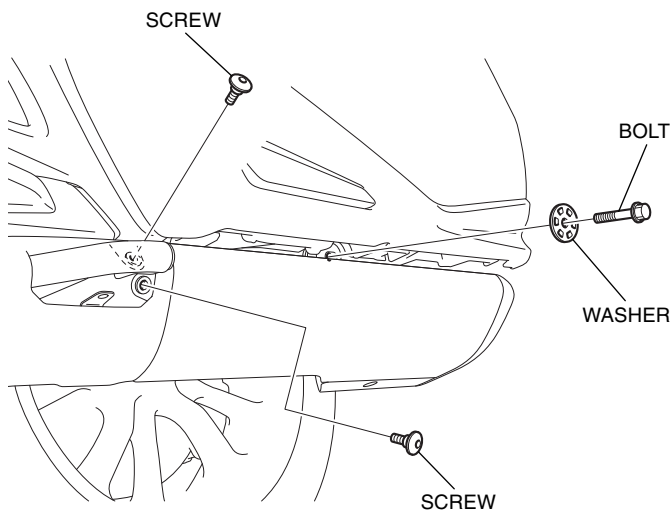
- Heat the bonding surfaces with a hair dryer if the ambient air temperature is below 70°F (21°C).
- The adhesive reaches full strength in 72 hours. Wait at least 24 hours before riding your motorcycle.
- Disconnect the negative (-) cable from the battery before installing this accessory.
- The clock memory will be erased when you disconnect the battery. Reset the clock after reconnecting the battery.
- Reinstall the removed parts on the motorcycle and make sure that the wires and harnesses are not pinched.

1. Remove the left saddlebag guard cover as shown.

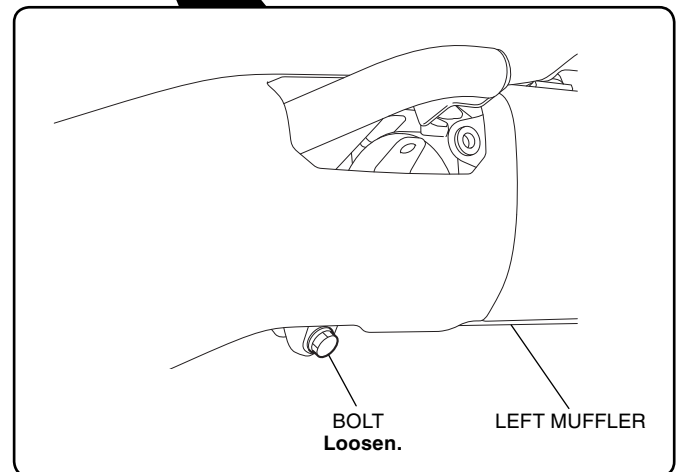
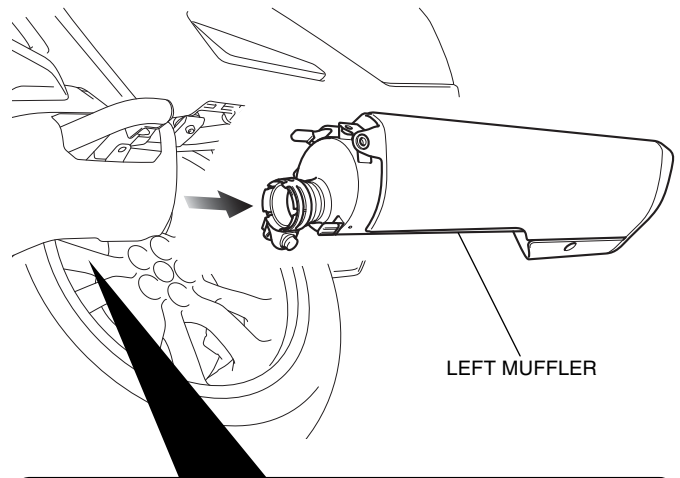
<Left side>



2. Remove the parts as shown.



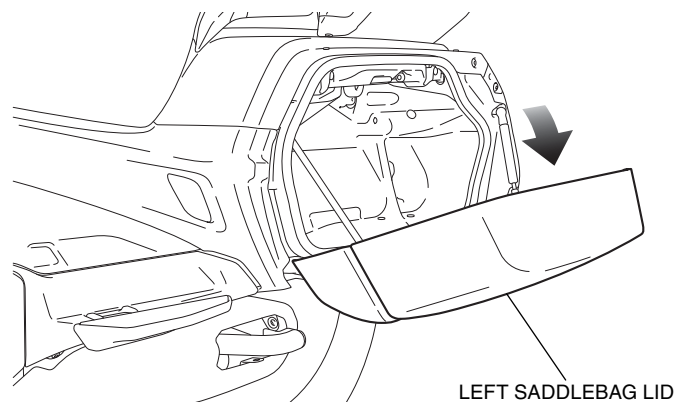
3. Loosen the bolt, then remove the left muffler as shown.



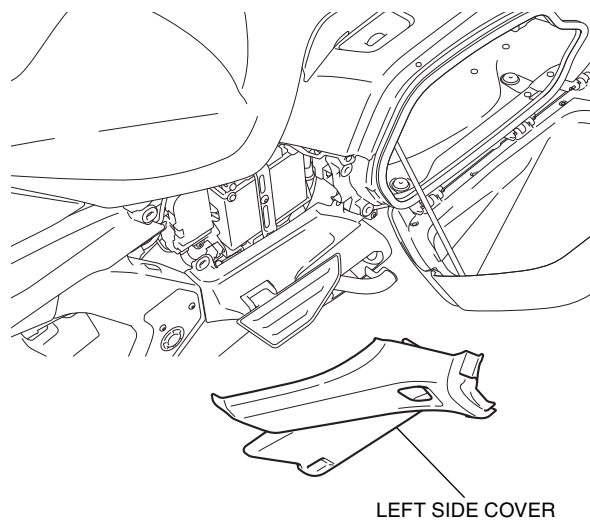
4. Open the left saddlebag lid as shown.

- Repeat on the right side.

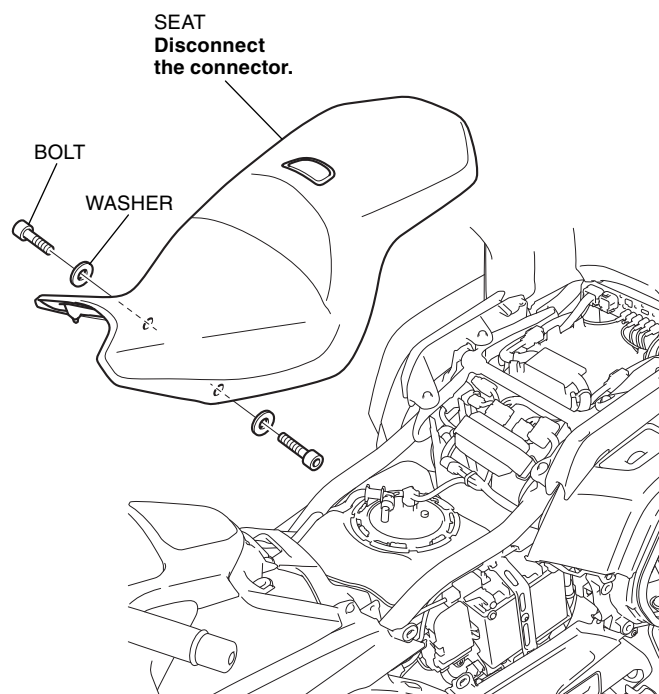
<Left side>



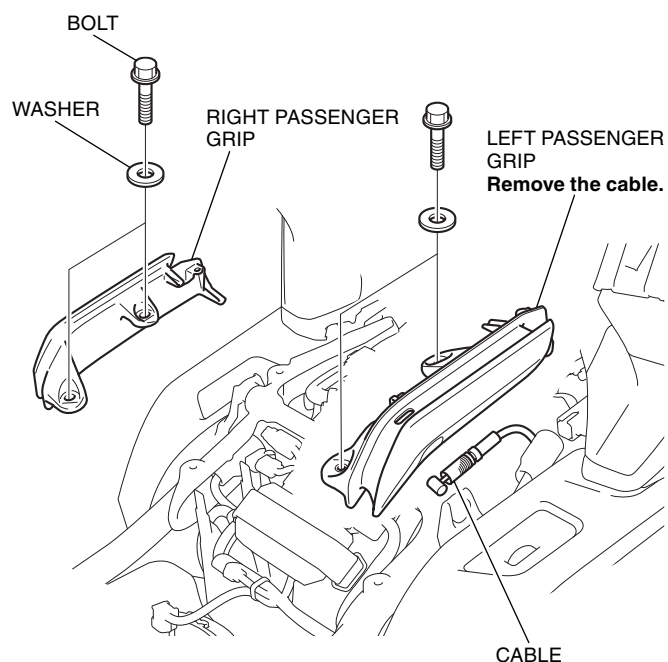
5. Remove the left side cover as shown, and disconnect the battery negative (-) cable.



6. Remove the right side cover in the same manner as the left side.
7. Remove the seat as shown.

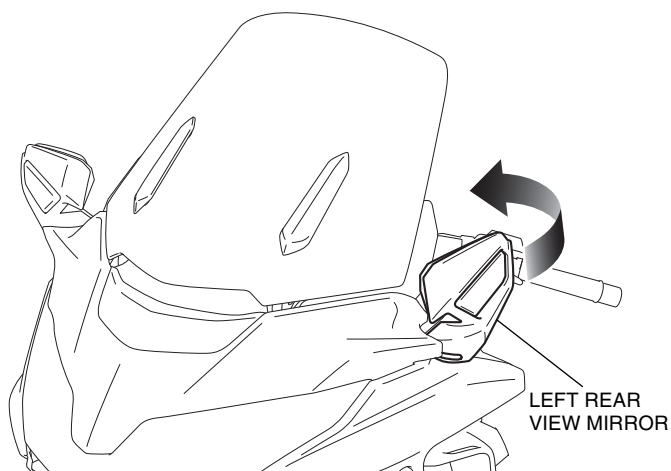


8. Remove the right and left passenger grip as shown.



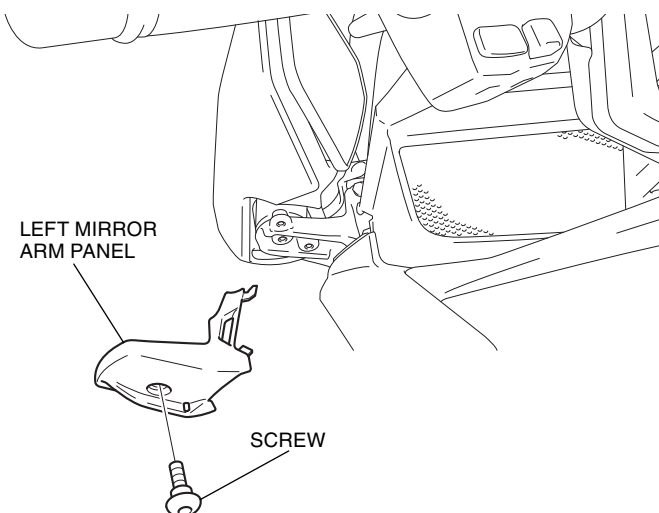
9. Fold the left rear view mirror backward as shown.

<Left side>

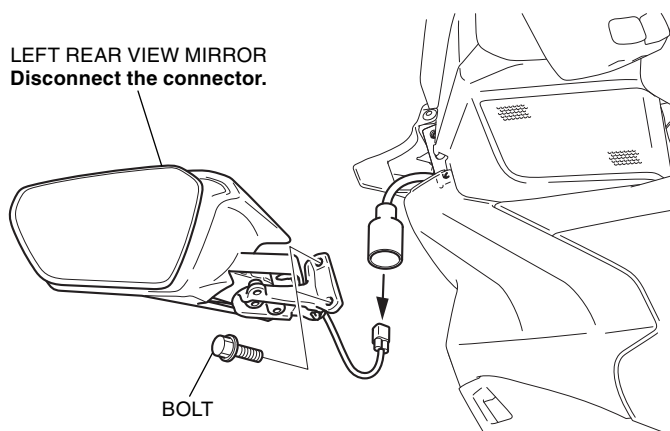


10. Remove the left mirror arm panel as shown.

<Left side>



11. Remove the left rear view mirror as shown.

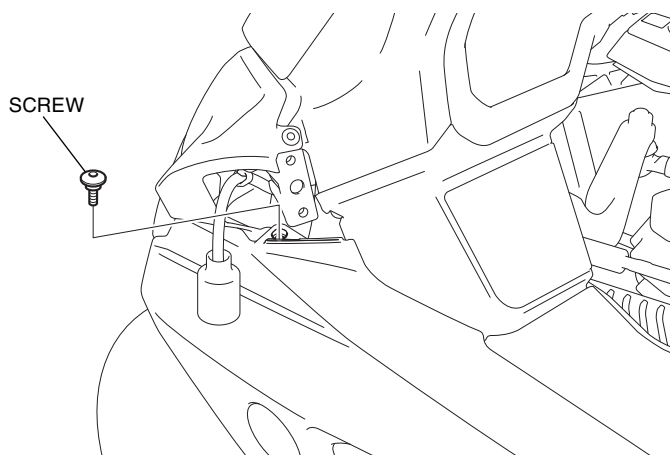


12. Remove the right mirror arm panel and right rear view mirror in the same manner as the left side.

13. Remove the screw as shown.

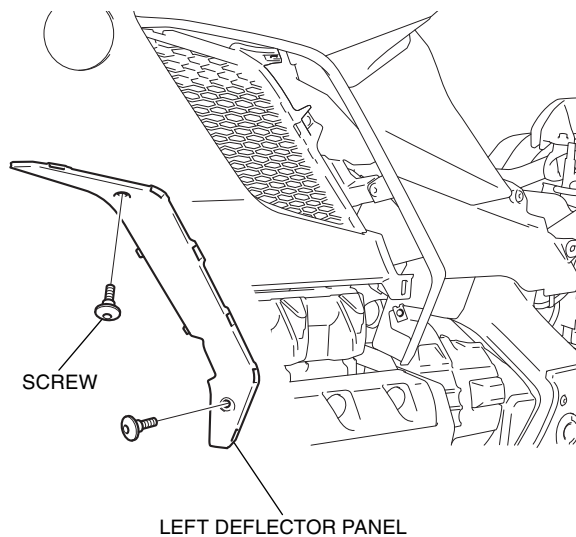
- Repeat on the right side.

<Left side>

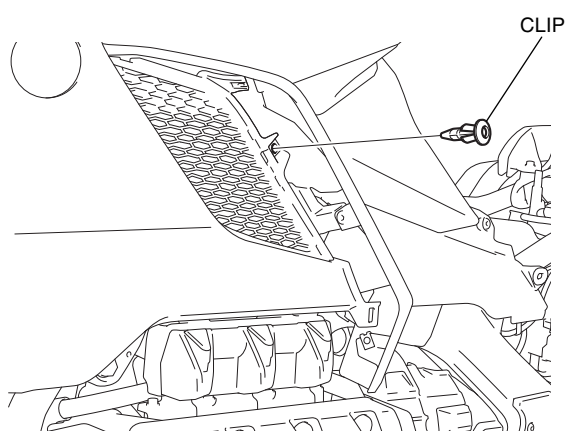


14. Remove the left deflector panel as shown.

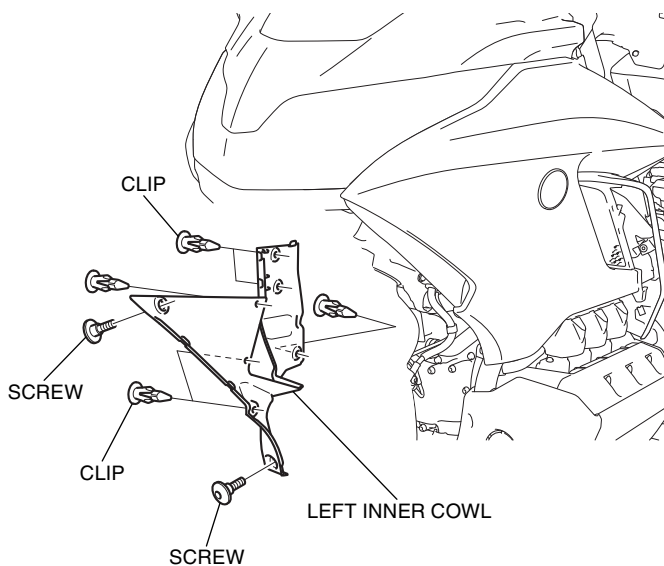
<Left side>



15. Remove the clip as shown.

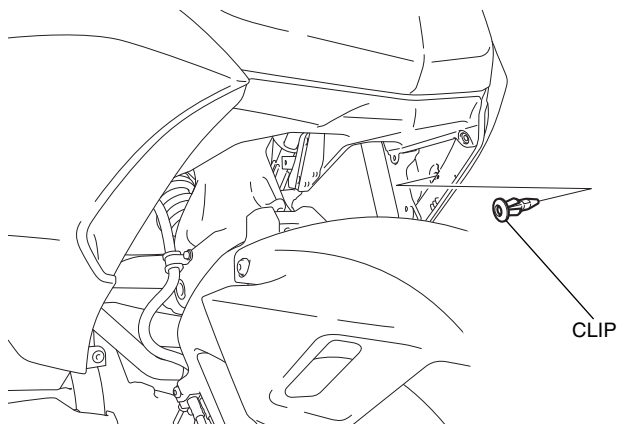


16. Remove the left inner cowl as shown.



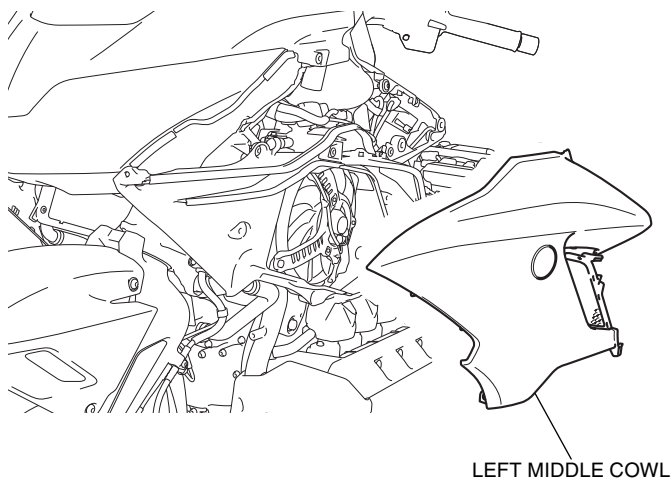
17. Remove the clip as shown.

<Left side>



18. Remove the left middle cowl as shown.

<Left side>

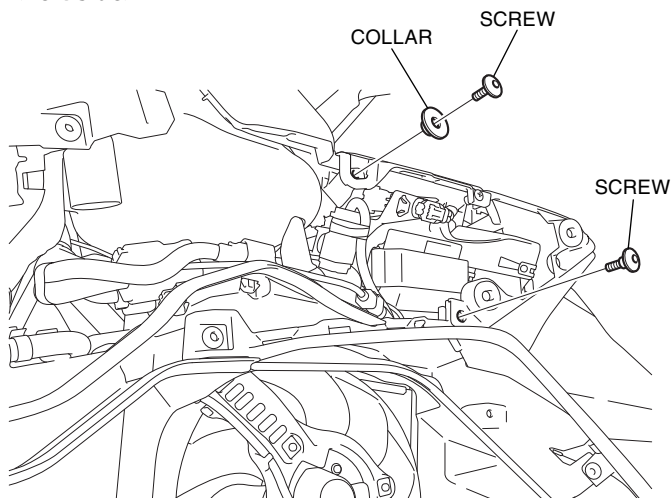


19. Remove the right deflector panel, right inner cowl and right middle cowl in the same manner as the left side.

20. Remove the parts as shown.

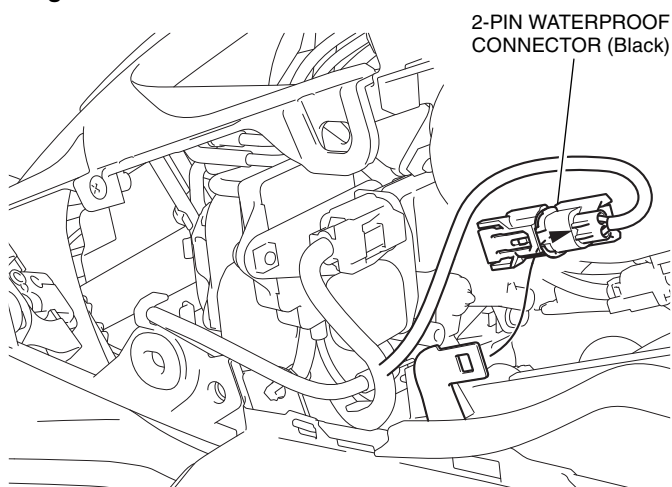
- Repeat on the right side.

<Left side>

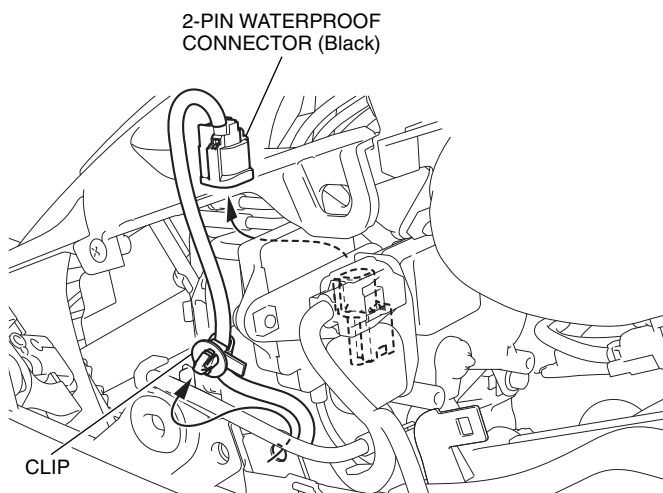


21. Remove the 2P black connector as shown.

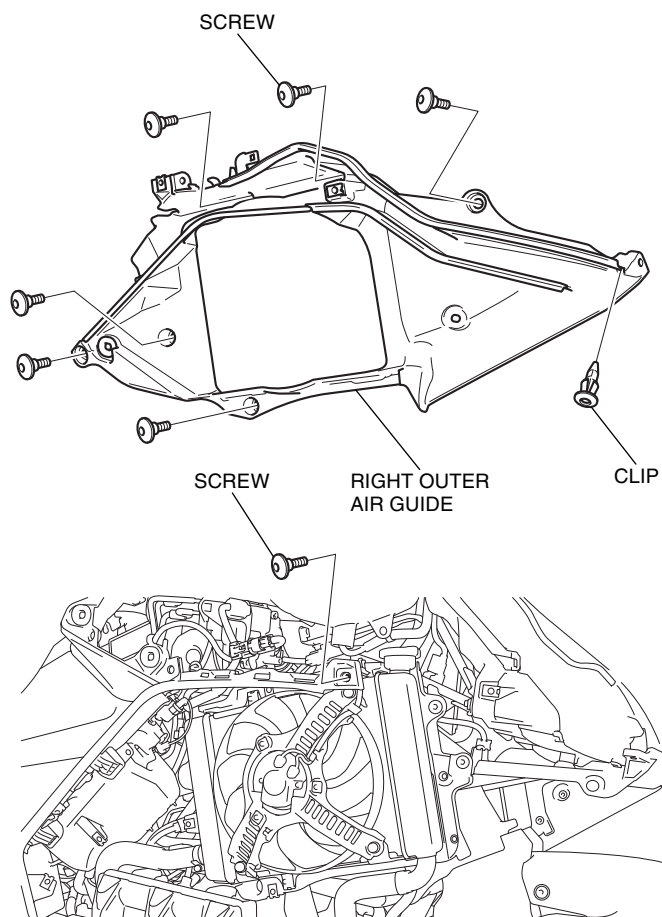
<Right side>



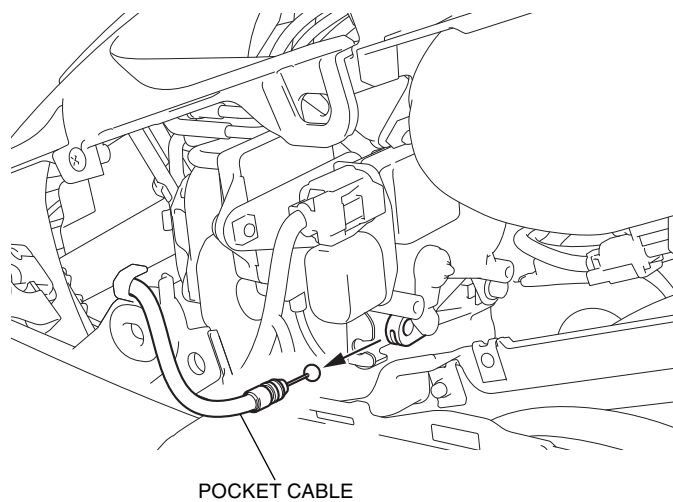
22. Remove the clip and disconnect the 2P black connector as shown.



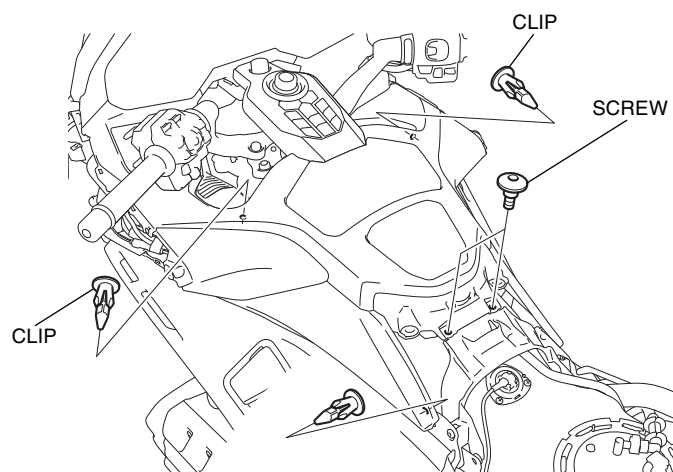
23. Remove the right outer air guide as shown.



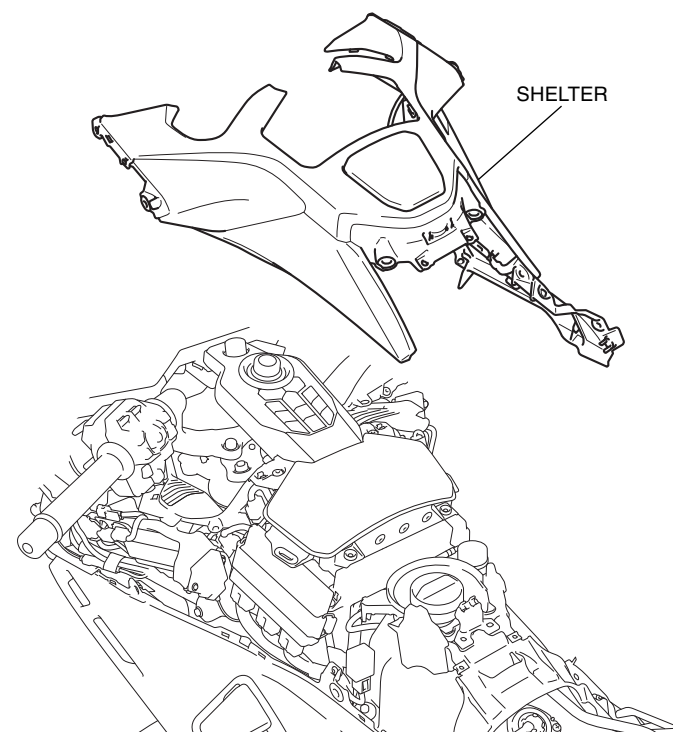
24. Remove the pocket cable as shown.



25. Remove the parts as shown.



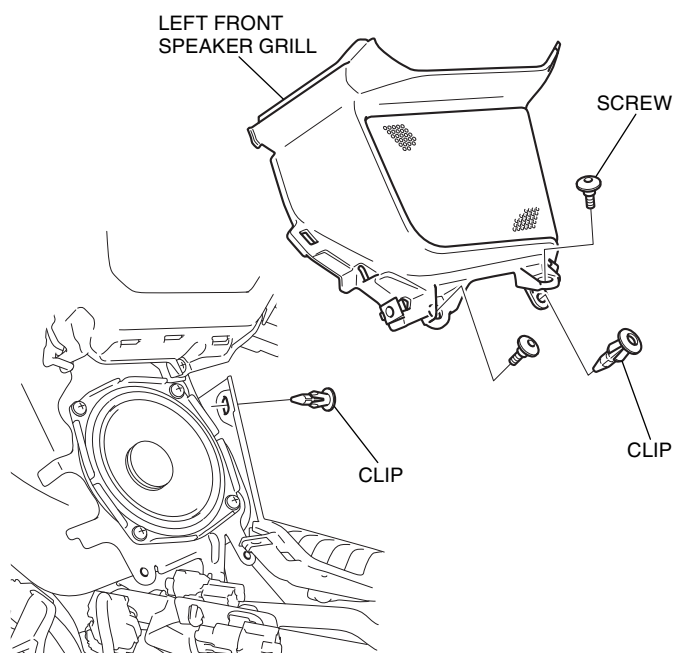
26. Remove the shelter as shown.



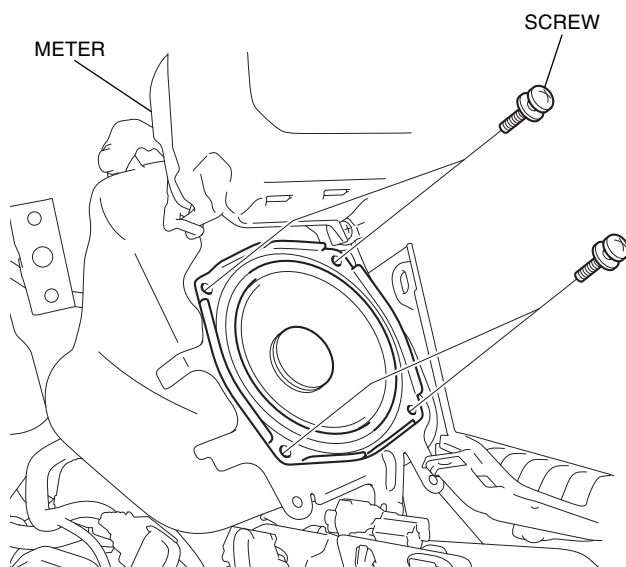
27. Remove the left front speaker grill as shown.

- Repeat on the right side.

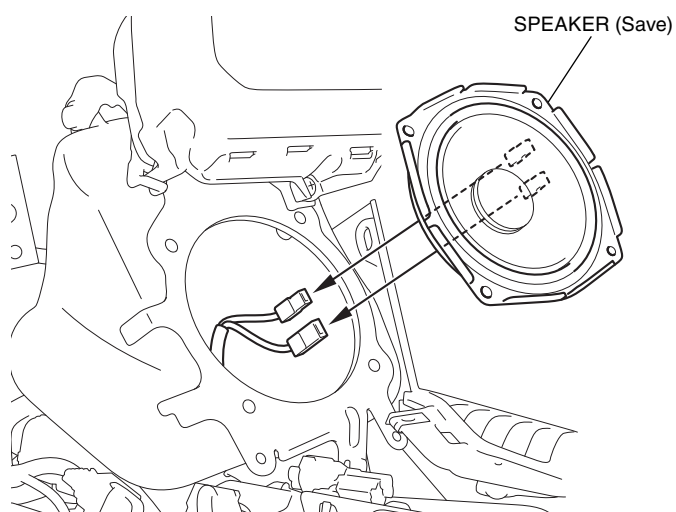
<Left side>



28. Remove the screws as shown.



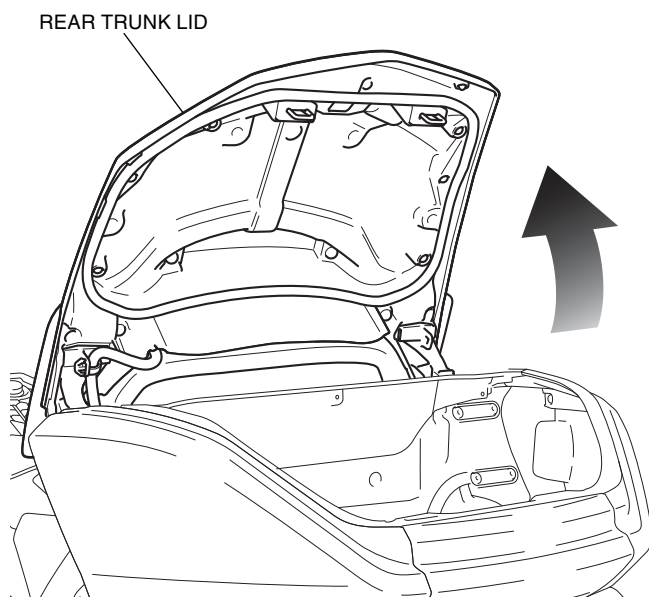
29. Remove the speaker as shown.



30. Remove the right side speaker in the same manner as the left side.

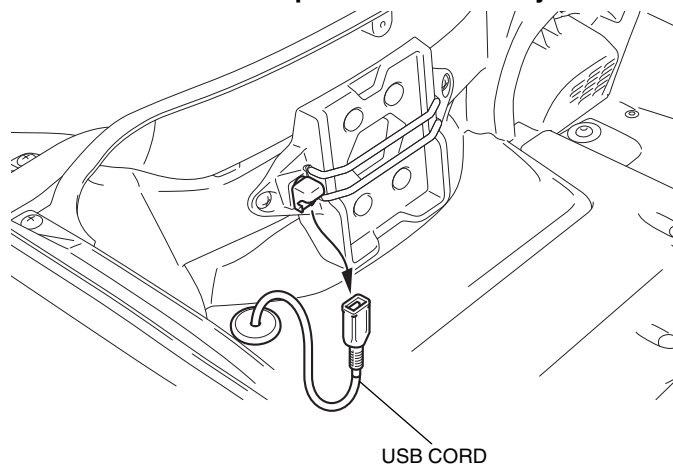
31. Open the rear trunk lid as shown.

- **Refer to the Owner's Manual and open the rear trunk lid using the emergency trunk cable.**

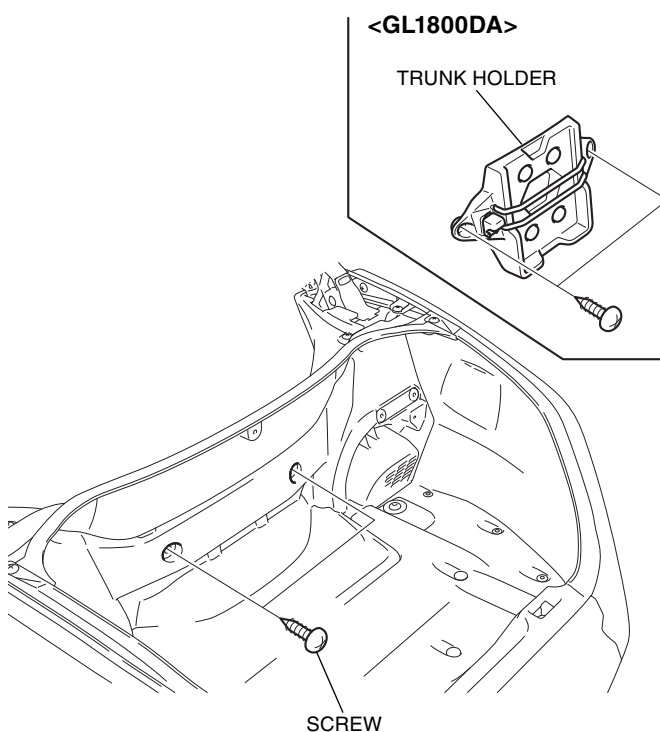


32. Remove the USB cord as shown.

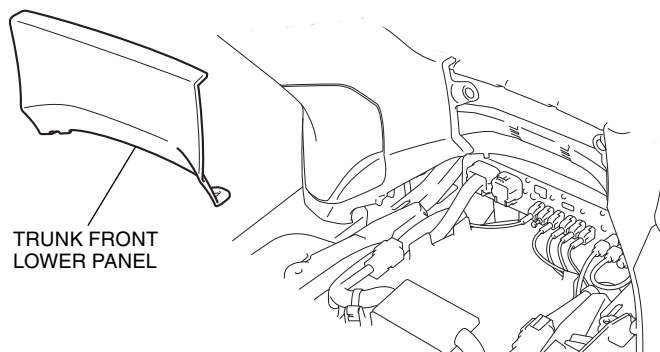
- **Perform this step on GL1800DA only.**



33. Remove the parts as shown.

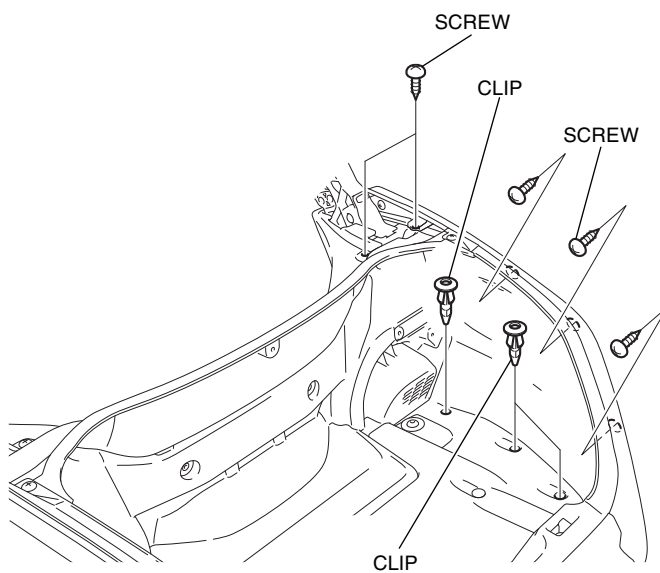


34. Remove the trunk front lower panel as shown.



35. Remove the parts as shown.

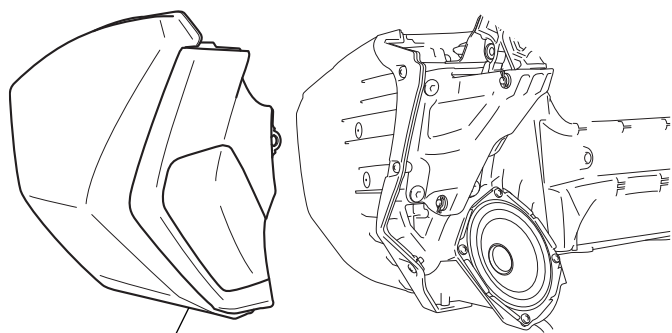
- **Repeat on the left side.**



36. Remove the trunk right side cover as shown.

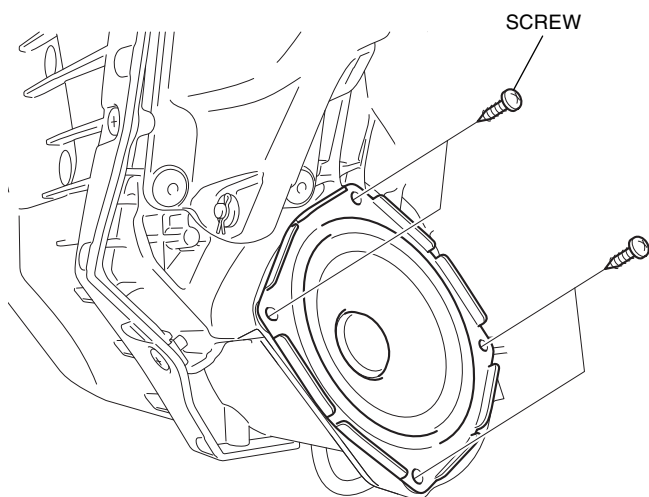
- Repeat on the left side.

<Right side>

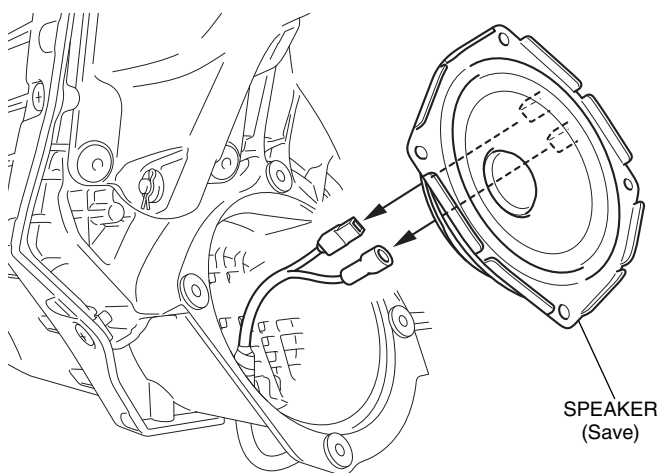


TRUNK RIGHT SIDE COVER

37. Remove the screws as shown.



38. Remove the speaker as shown.



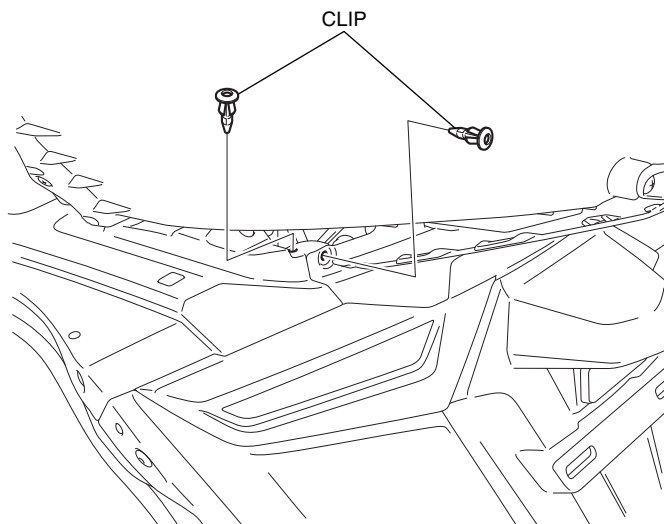
SPEAKER
(Save)

39. Remove the left side speaker in the same manner as the right side.

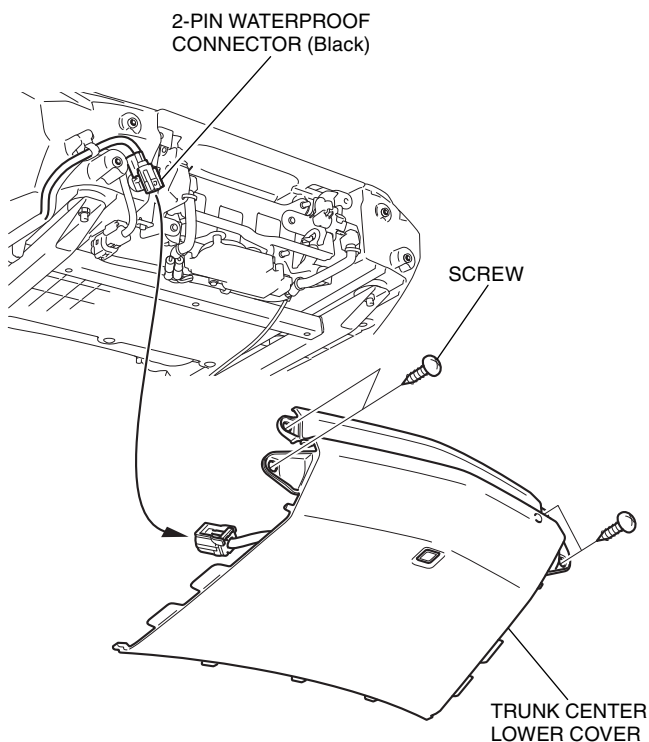
40. Remove the clips as shown.

- Repeat on the right side.

<Left side>



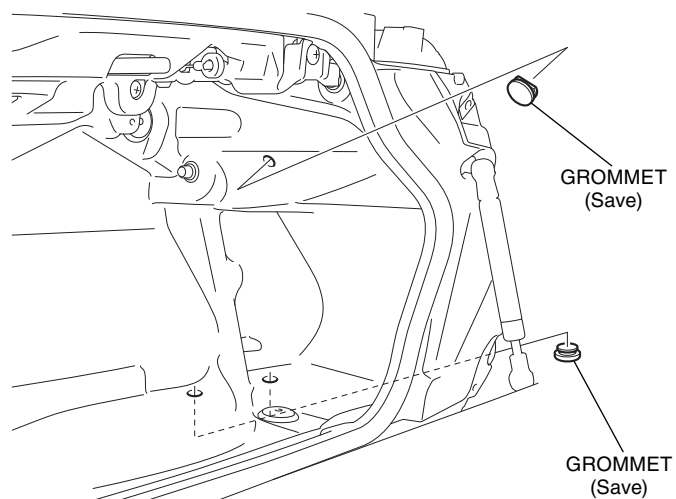
41. Disconnect the connector and remove the trunk center lower cover as shown.



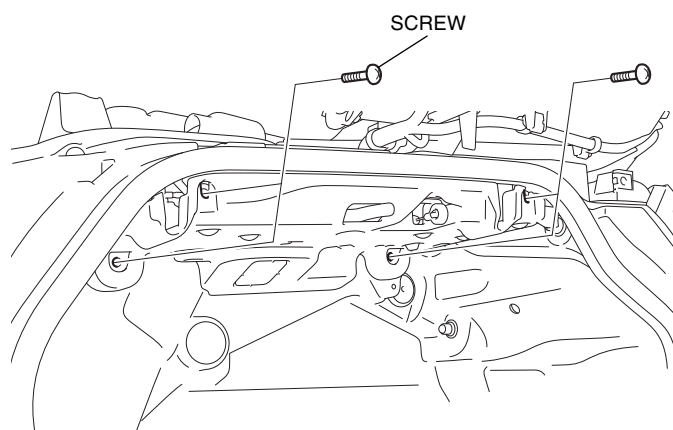
TRUNK CENTER
LOWER COVER

42. Remove the grommets as shown.

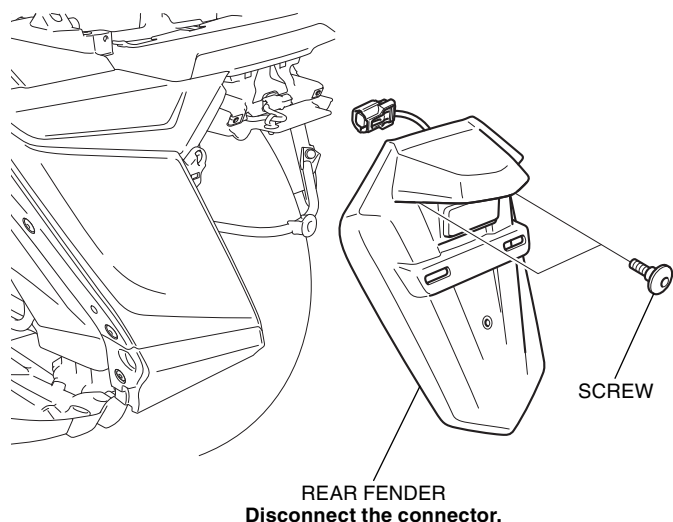
<Left side>



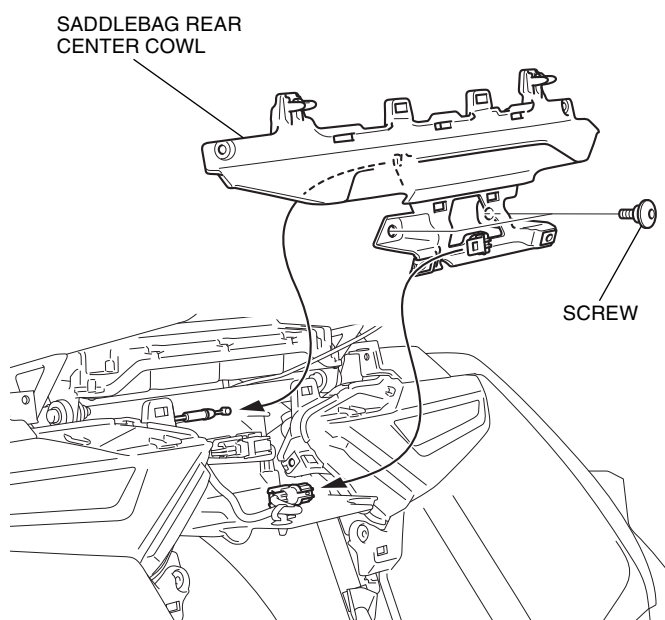
43. Remove the screws as shown.



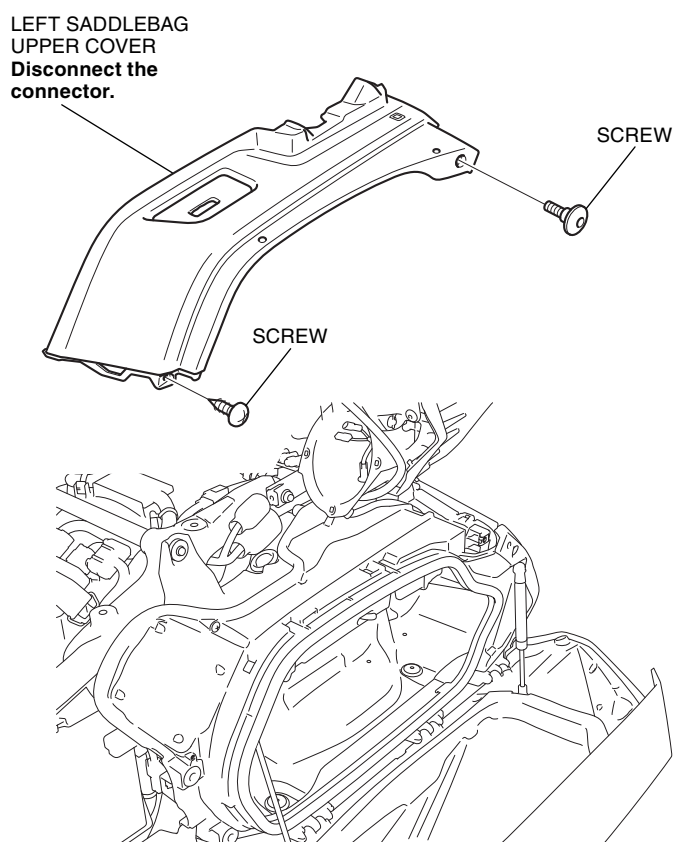
44. Remove the rear fender as shown.



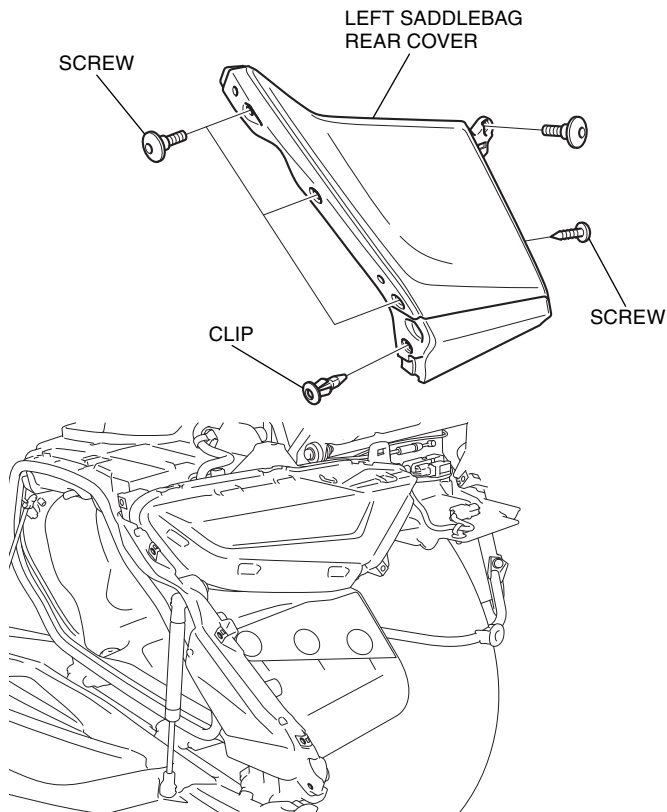
45. Remove the saddlebag rear center cowl as shown.



46. Remove the left saddlebag upper cover as shown.

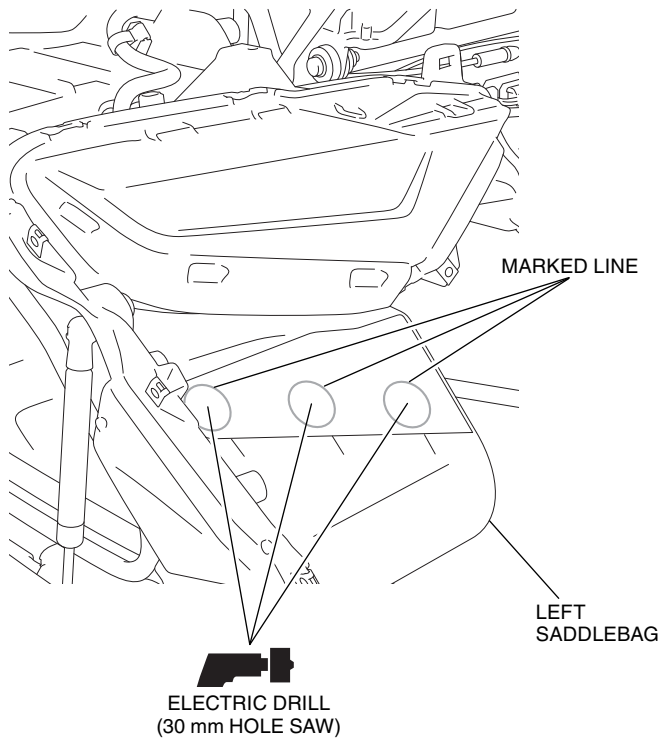


47. Remove the left saddlebag rear cover as shown.



48. Drill a 30 mm hole at each marked line of the left saddlebag as shown.

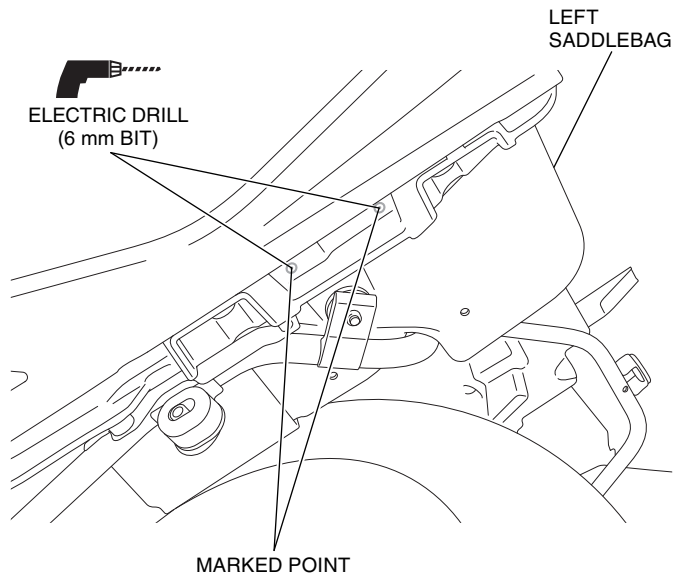
- Drill holes at the center of the marked lines.
- Remove the any burrs from the edge of the hole.



49. Drill a 6 mm hole at the marked points of the left saddlebag as shown.

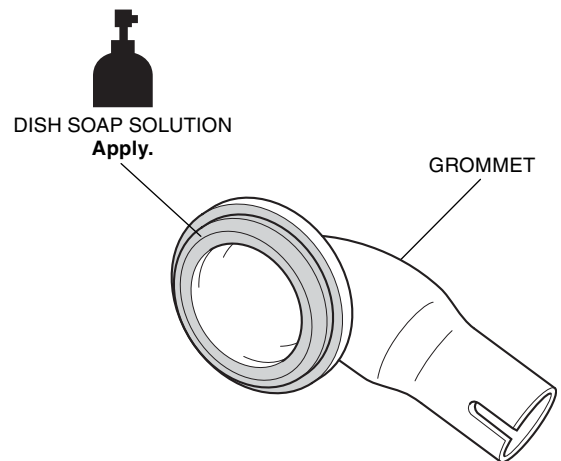
- Remove the any burrs from the edge of the hole.

<Under side>

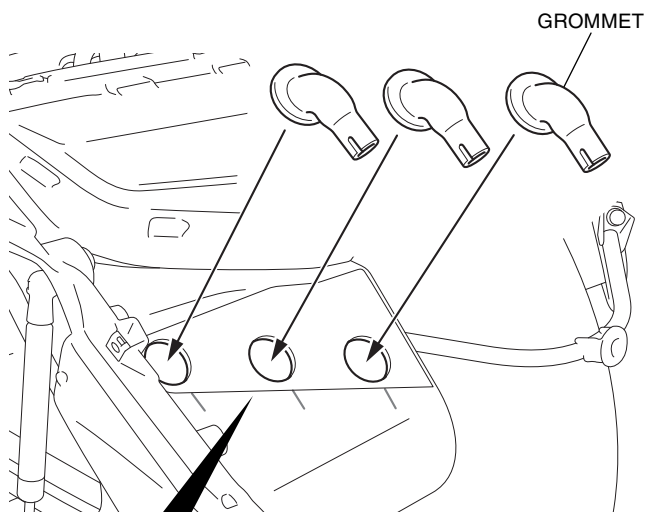


50. Apply dish soap solution to the position shown.

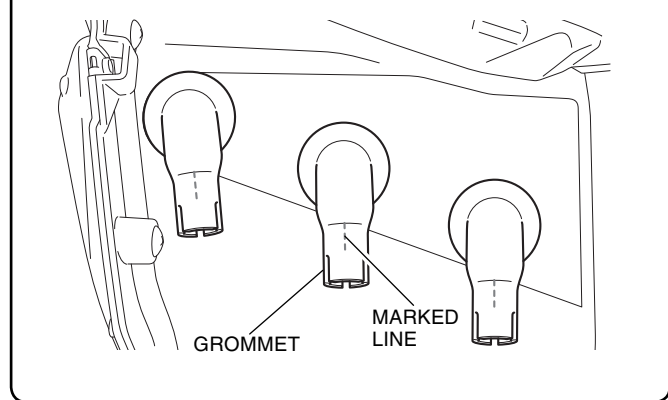
- Perform this step for all three grommets.



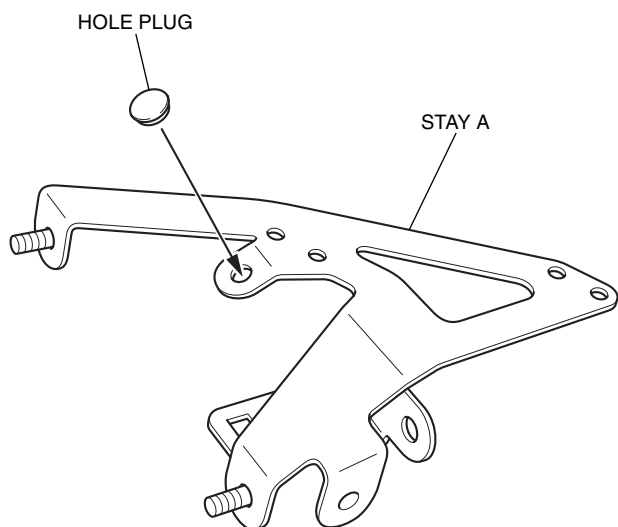
51. Install the grommets as shown.



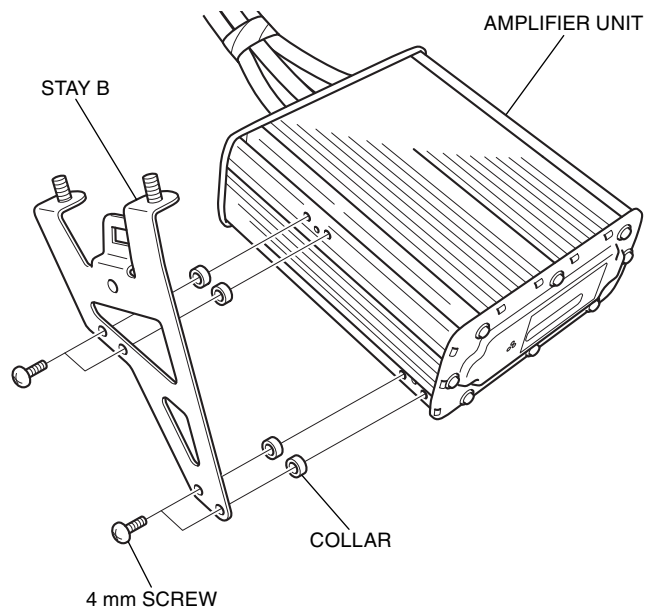
Align the end of grommet with the marked line as shown.



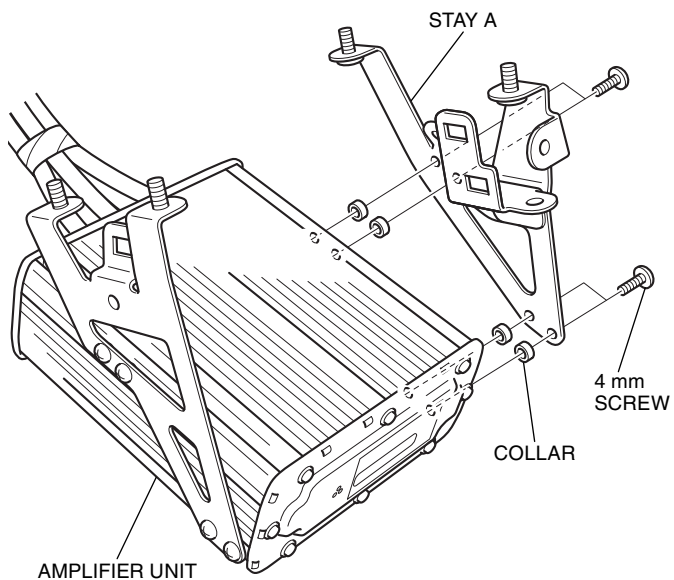
52. Install the hole plug into stay-A as shown.



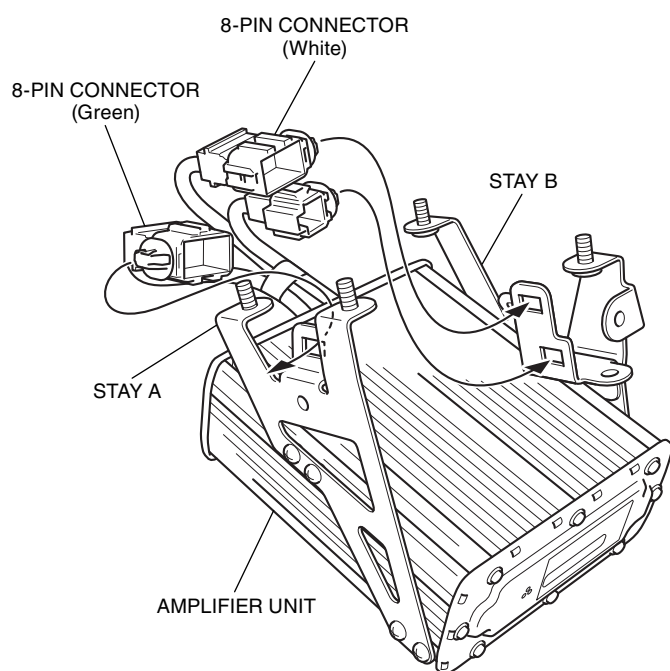
53. Install stay-B to the amplifier unit with the screws and collars as shown.



54. Install stay-A to the amplifier unit with the screws and collars as shown.

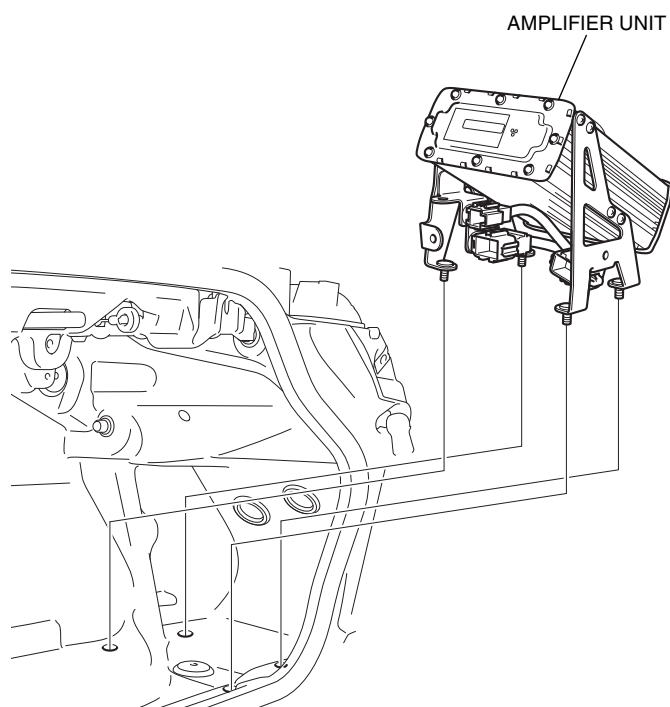


55. Secure the connectors as shown.



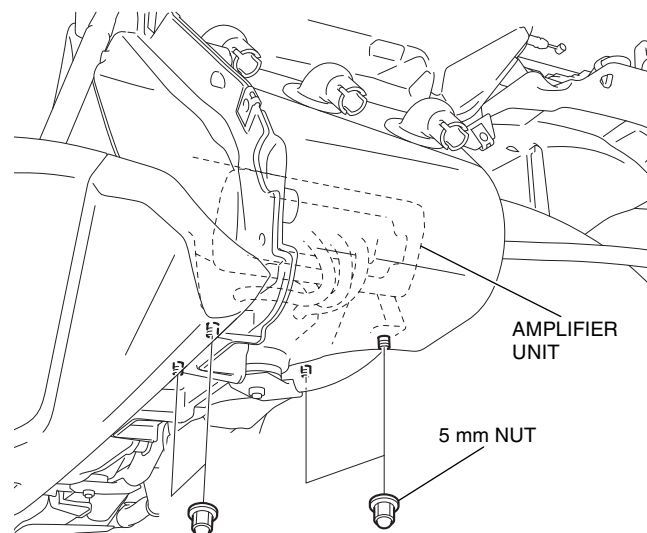
56. Install the amplifier unit as shown.

<Left side>



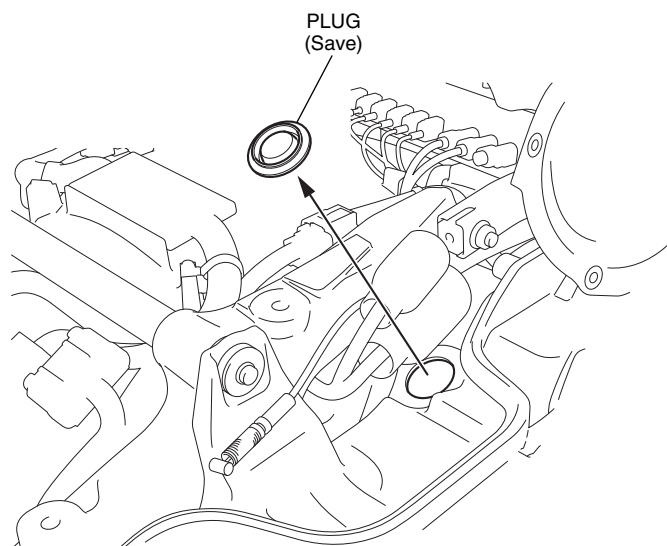
57. Install the 5 mm nuts as shown.

<Left side>

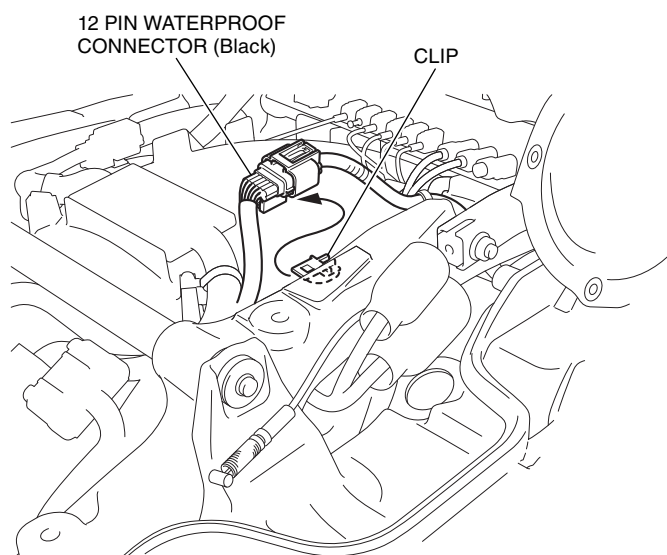


58. Remove the plug as shown.

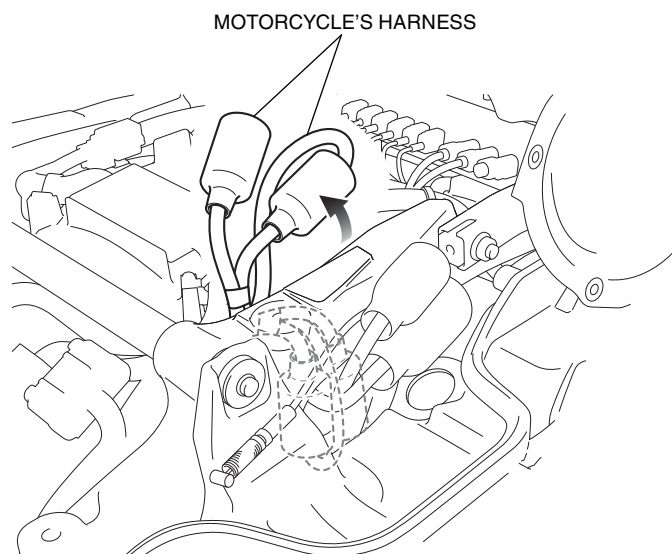
<Left side>



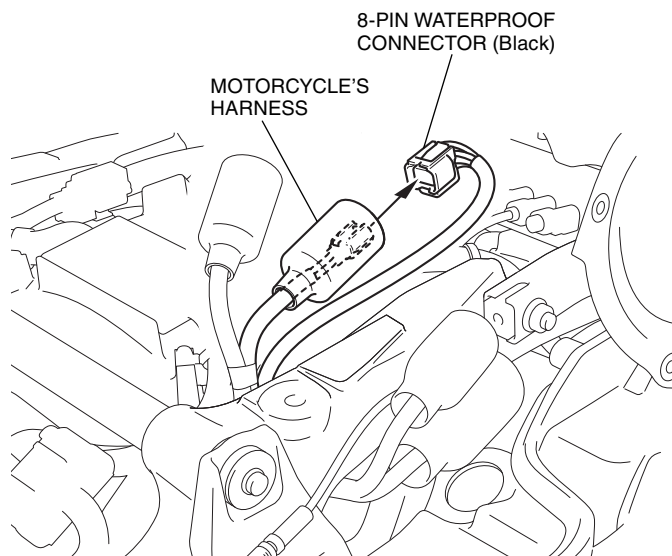
59. Remove the 12P black connector as shown.



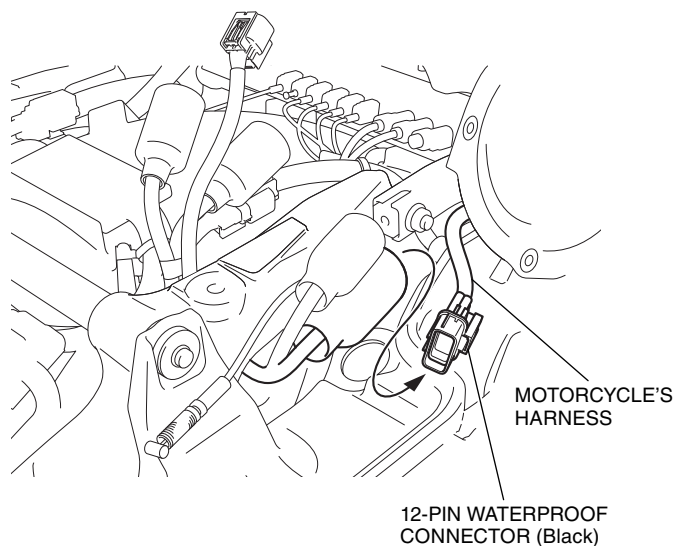
60. Move the motorcycle's harnesses as shown.



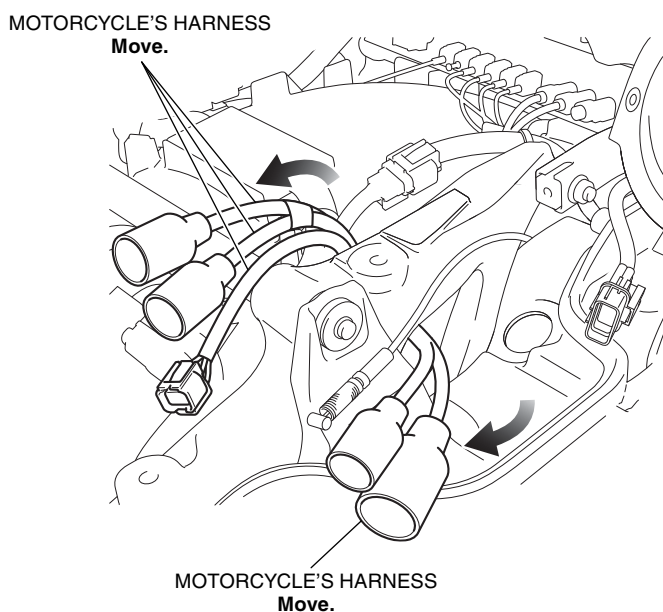
61. Disconnect the 8P black connector as shown.



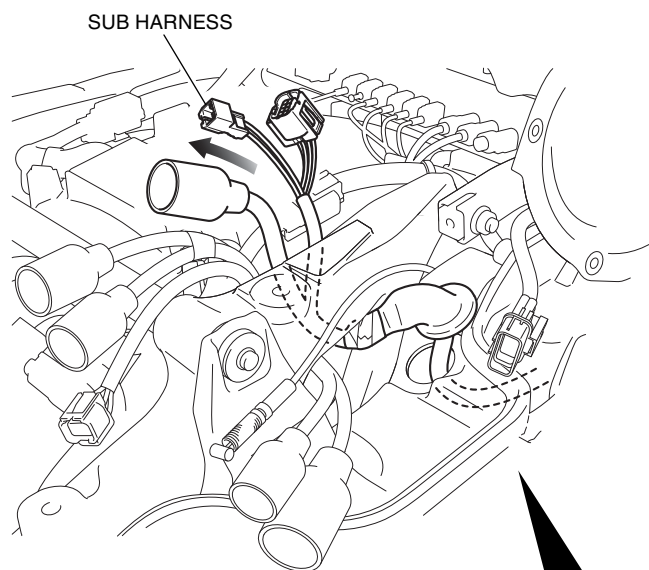
62. Disconnect the motorcycle's harness as shown.



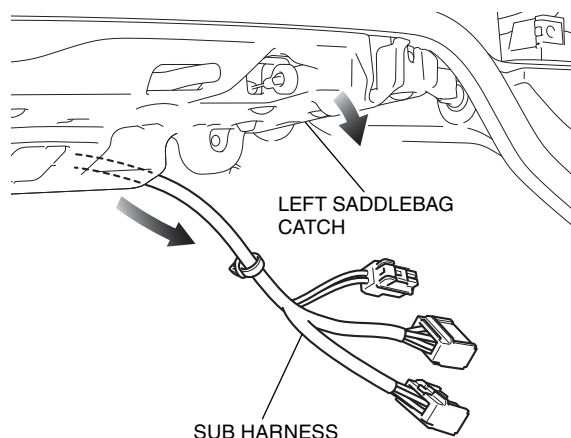
63. Move the motorcycle's harnesses to the positions shown.



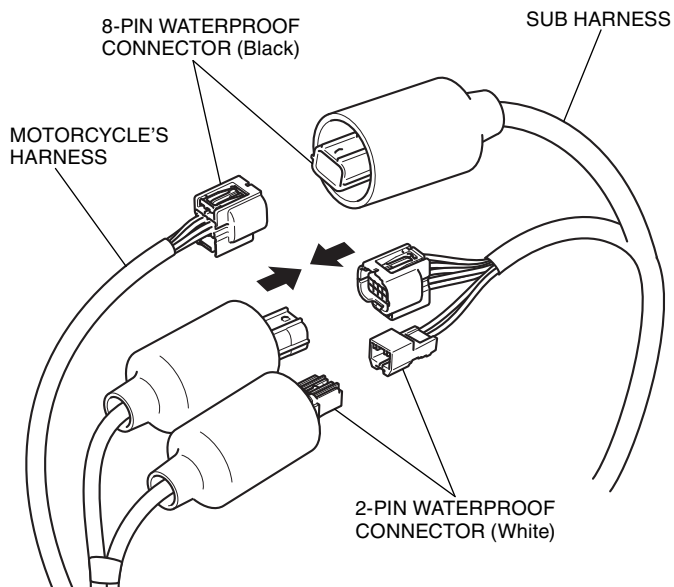
64. Route the sub harness as shown.



Move the left saddlebag catch and route the sub harness as shown.

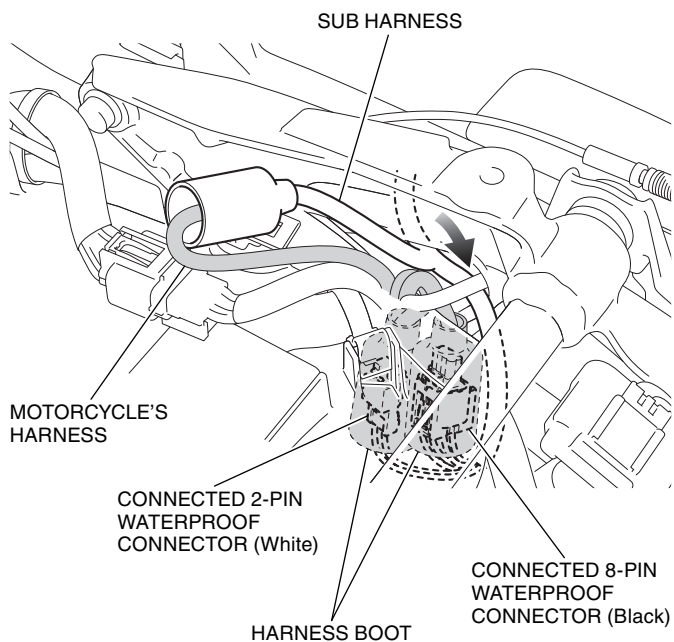


65. Connect the sub harness to the motorcycle's harness as shown.

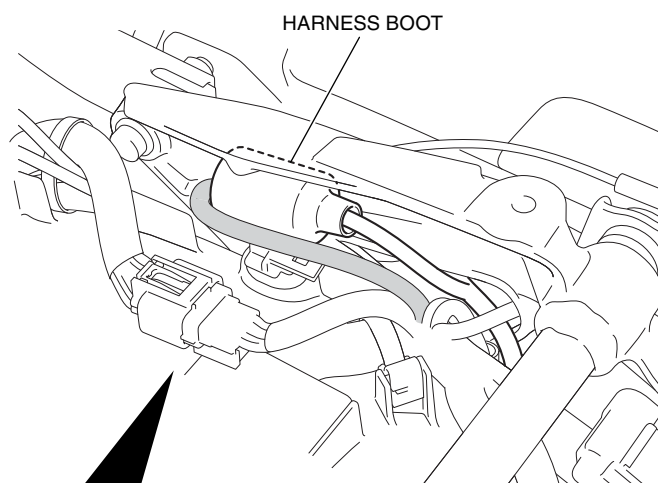


66. Store the harness boots as shown.

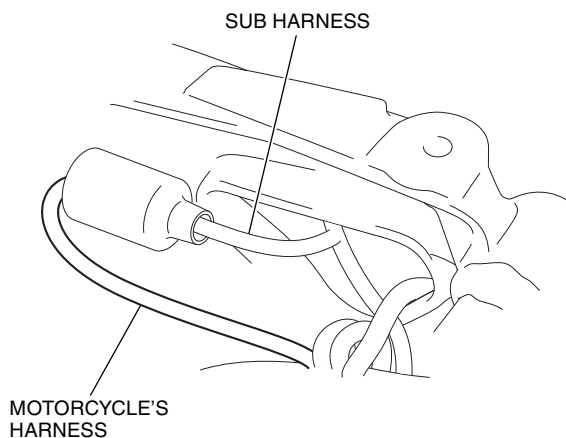
<Left side>



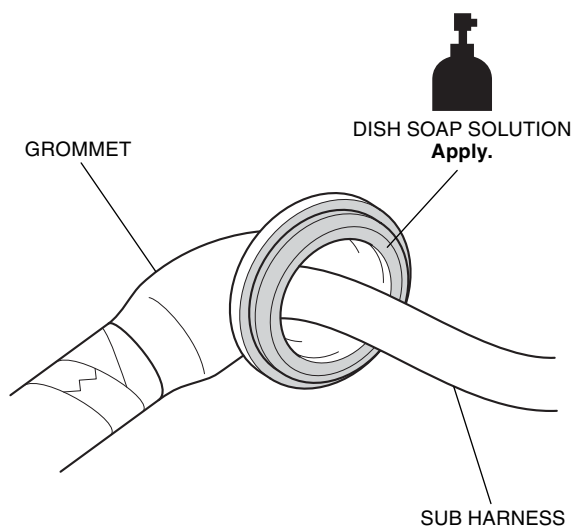
67. Store the harness boot as shown.



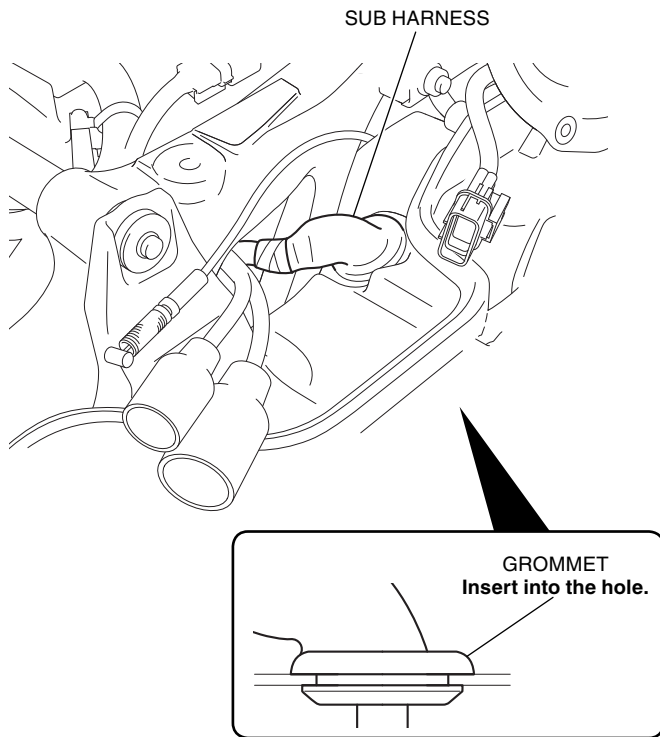
Fold back the motorcycle's harness as shown.



68. Apply dish soap solution to the position shown.

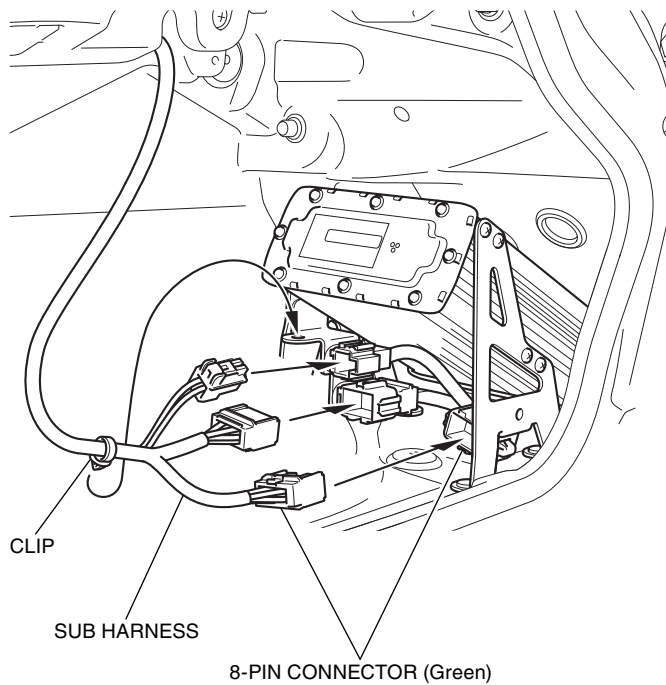


69. Install the sub harness as shown.

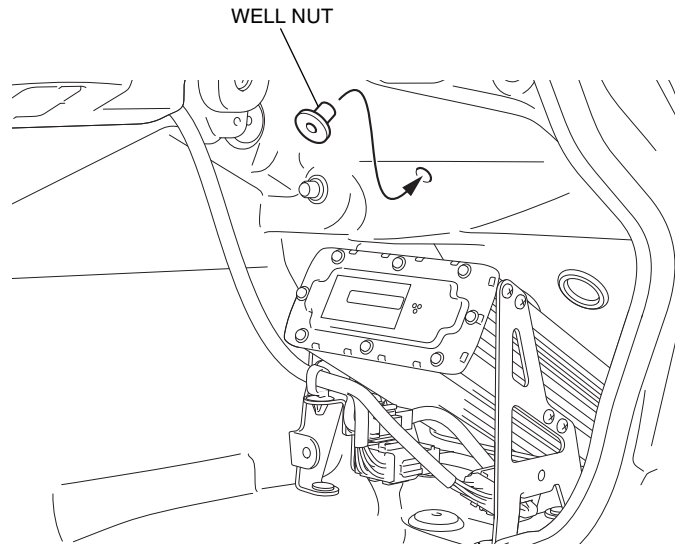


70. Install the left saddlebag catch in the reverse order of removal.

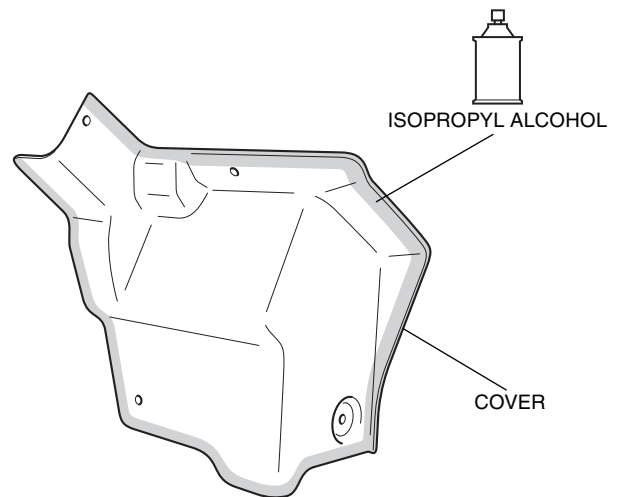
71. Connect the sub harness to the amplifier and install the clip to the stay as shown.



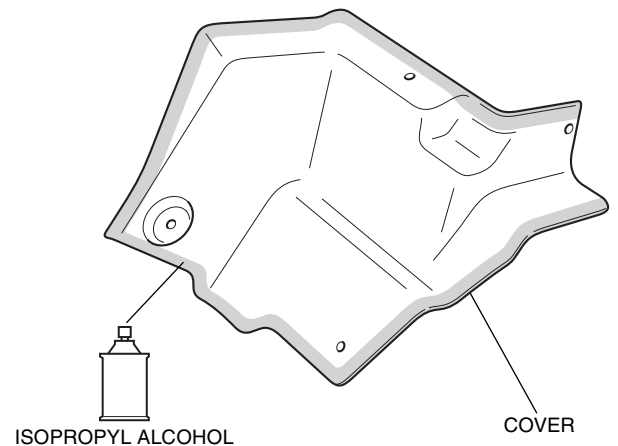
72. Install the well nut as shown.



73. Clean the surface of the area shown using isopropyl alcohol as shown.

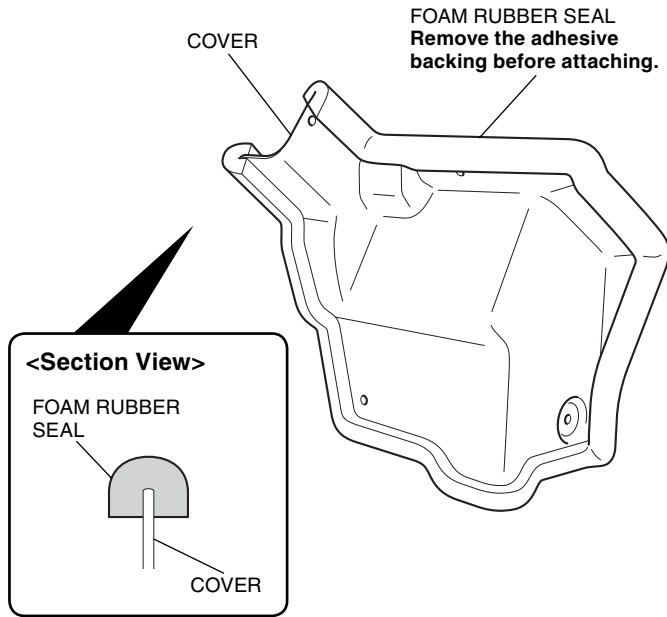


<Backside>



74. Attach the foam rubber seal to the cover as shown.

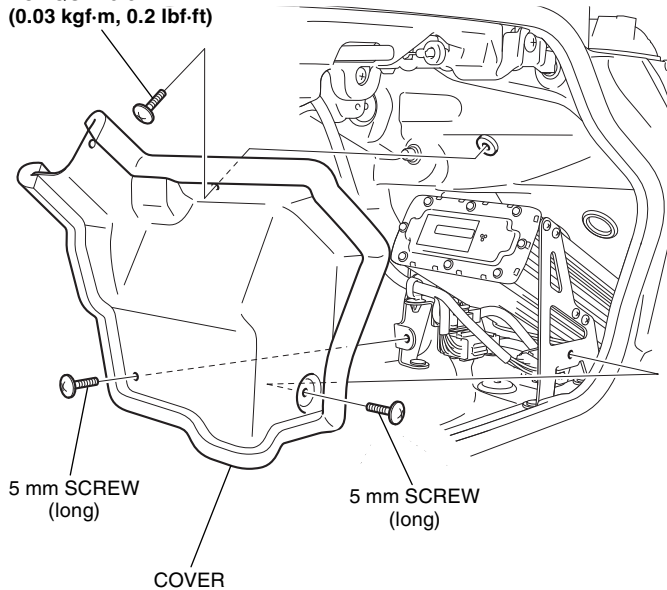
- Trim the excess end off the foam rubber seal.



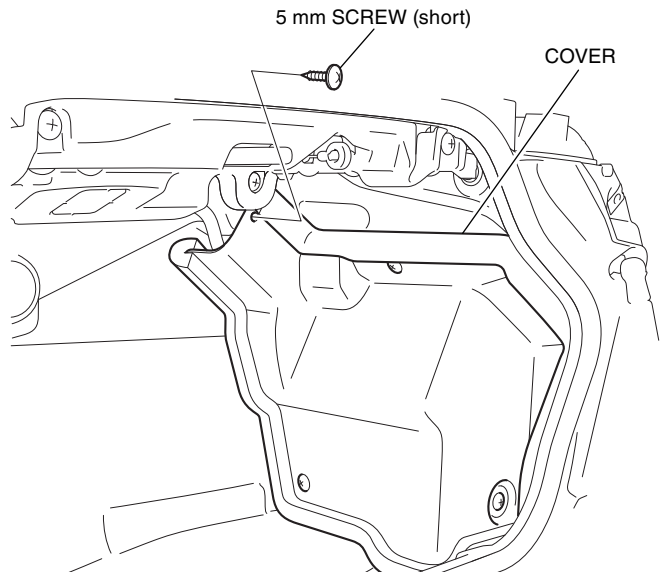
75. Install the cover as shown.

- Confirm that any wire harness is not caught or too tight.

5 mm SCREW (long)
TORQUE: 0.3 N·m
(0.03 kgf-m, 0.2 lbf-ft)

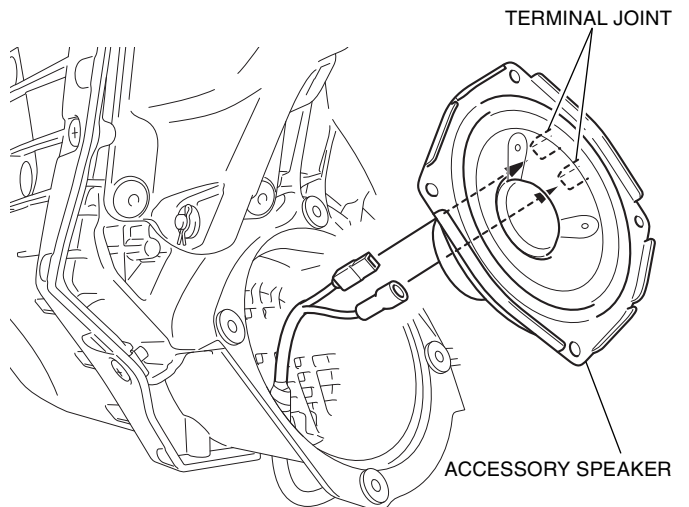


76. Install the 5 mm screw as shown.

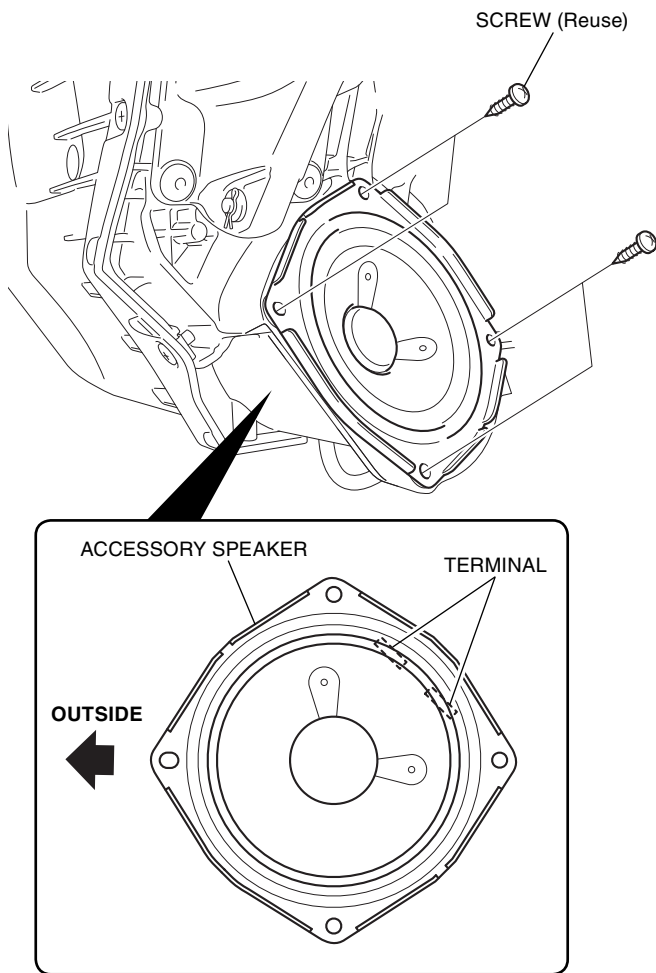


77. Connect the accessory speaker to the right rear speaker terminals as shown.

<Right rear>



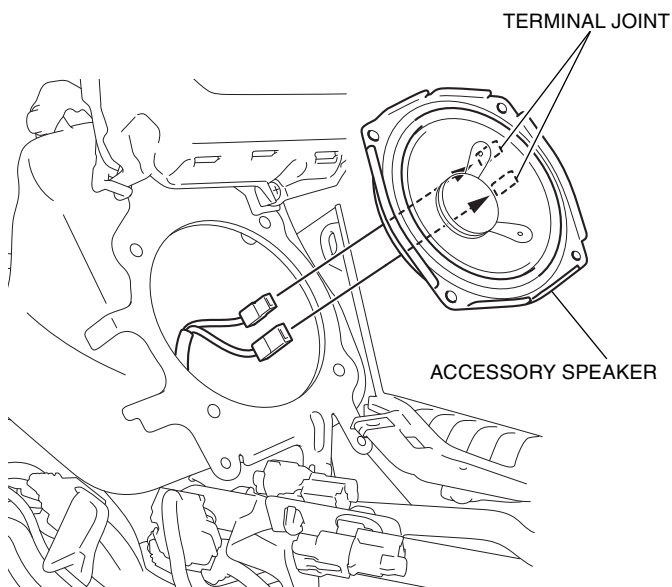
78. Install the right rear accessory speaker as shown.



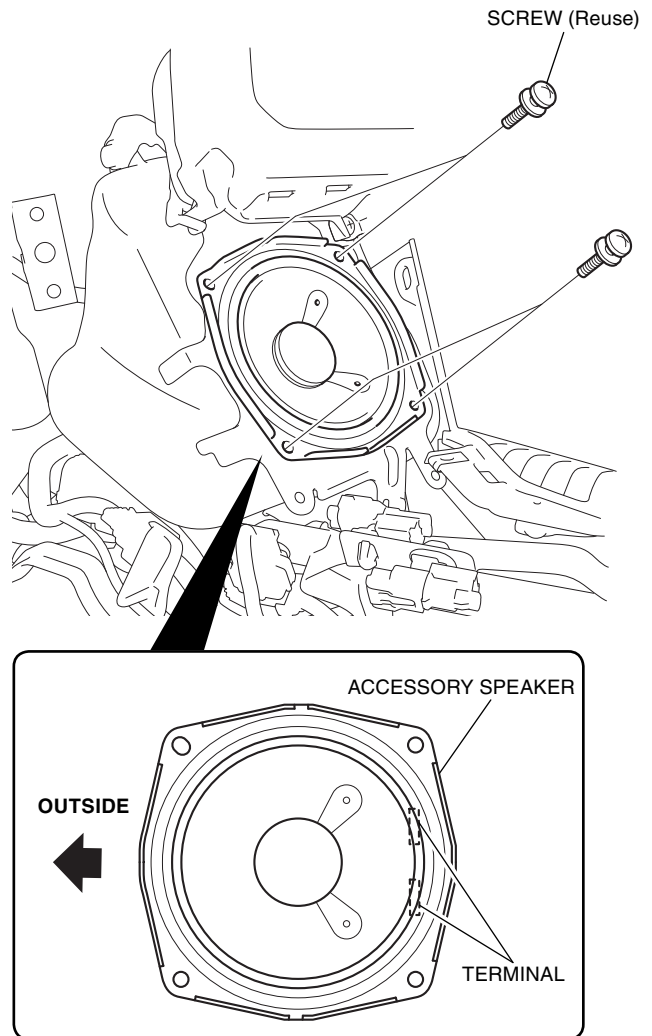
79. Install the left rear accessory speaker in the same manner as the right side.

80. Connect the accessory speaker to the left front speaker terminals as shown.

<Left front>



81. Install the left front accessory speaker as shown.



82. Install the right front speaker in the same manner as the left front.

83. Install the motorcycle's parts in the reverse order of removal.

- **Confirm that any wire harness is not caught or too tight.**

84. Check the power amplifier, speaker, headlight and the other lights for proper operation.

HONDA

INSTALLATION INSTRUCTIONS

Accessory

**POWER AMPLIFIER &
SPEAKER KIT**
P/N 08A83-MKC-A00

Application

GL1800B/BD

Publication No.

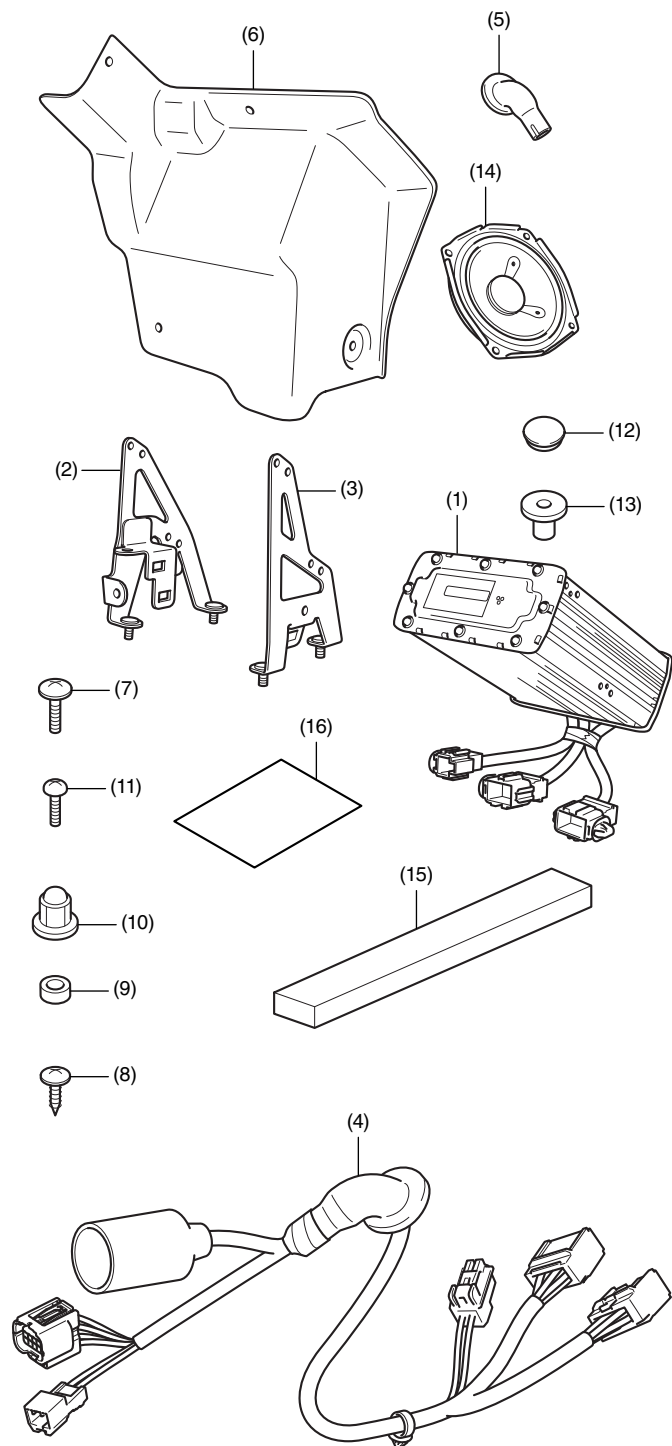
MII 16426

Issue Date

January 2018

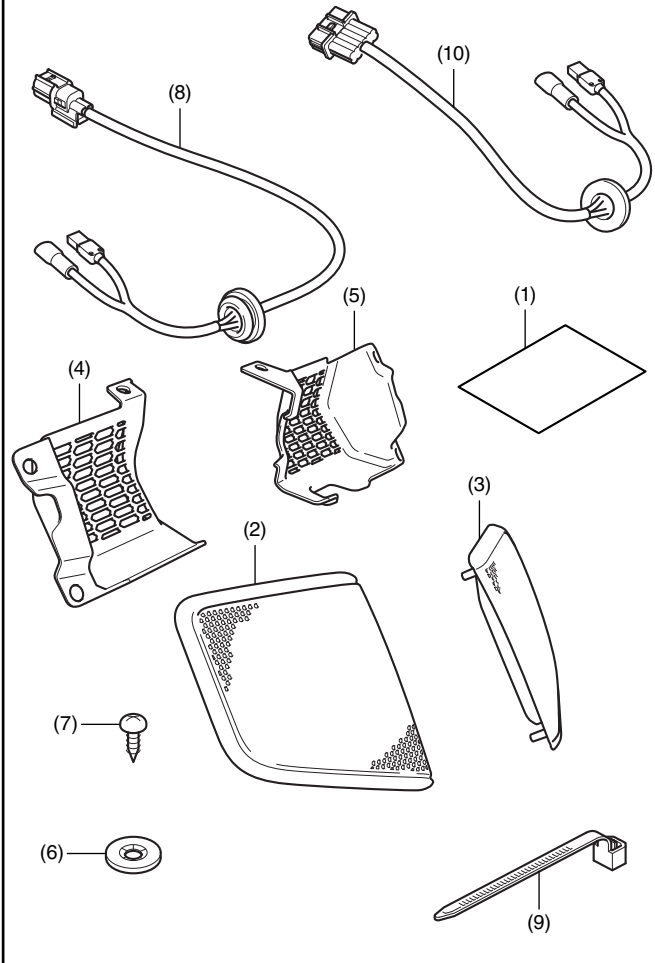
Honda Dealer: Please give a copy of these instructions to your customer.

PARTS LIST



No.	Description	Qty
(1)	Amplifier unit	1
(2)	Stay A	1
(3)	Stay B	1
(4)	Sub harness	1
(5)	Grommet	3
(6)	Cover	1
(7)	5 mm screw (long)	4
(8)	5 mm screw (short)	2
(9)	Collar	9
(10)	5 mm nut	5
(11)	4 mm screw	9
(12)	Hole plug	1
(13)	Well nut	1
(14)	Speaker	4
(15)	Sponge seal rubber	1
(16)	Installation Instructions URL	1

REAR SPEAKER ATTACHMENT KIT
Sold separately



No.	Description	Qty
(1)	Installation Instructions URL	1
(2)	Speaker right grill	1
(3)	Speaker left grill	1
(4)	Speaker right cover	1
(5)	Speaker left cover	1
(6)	Speed nut	9
(7)	5 mm screw	7
(8)	Right sub harness	1
(9)	Wire tie	4
(10)	Left sub harness	1

TOOLS AND SUPPLIES REQUIRED

Box-end wrench (8 mm)
 Open-end wrench (8 mm)
 Phillips screwdriver
 Electric drill
 Drill bit (4, 6 and 10 mm)
 Hole saw (30 mm)
 File
 Snips
 Dish soap solution
 (Water:Dish soap / 100:1)
 Isopropyl alcohol
 Ruler
 Scissors
 Shop towel
 Torque wrench

TORQUE CHART

Tighten all screws, bolts, and nuts to their specified torque values. Refer to the Service Manual for the torque values of the removed parts.

Item	N-m	kgf-m	lbf-ft
4 mm screw	1	0.1	0.7
5 mm screw	4.2	0.4	3.1
5 mm nut	5.2	0.5	3.8

INSTALLATION

▲ CAUTION

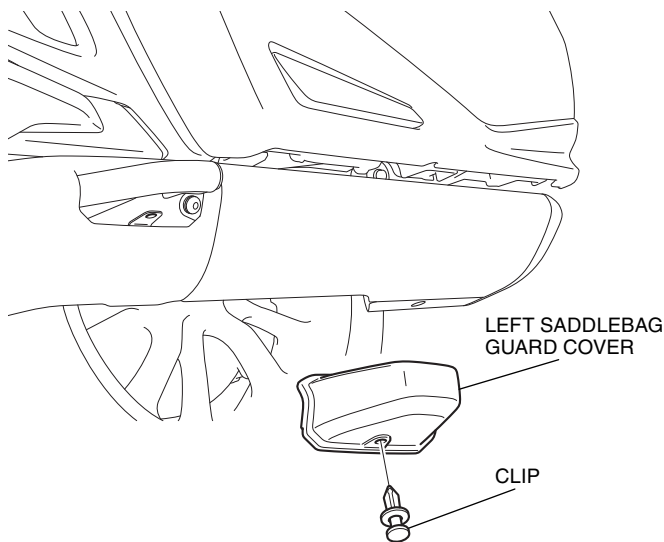
- To prevent burns, allow the engine, exhaust system, radiator, etc., to cool before installing the accessory.

NOTE:

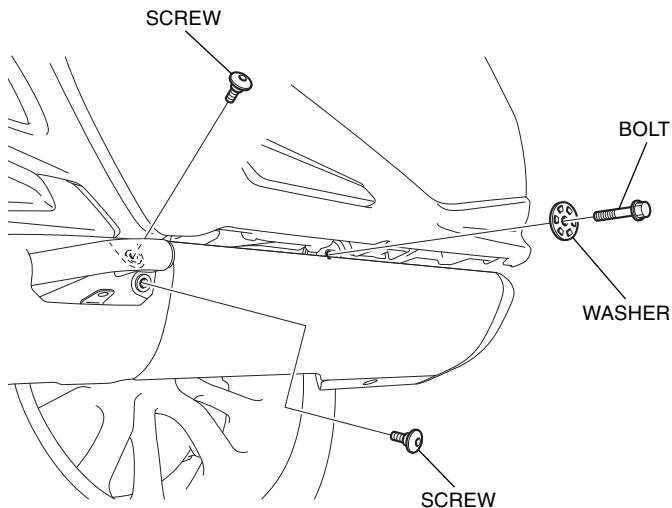
- Heat the bonding surfaces with a hair dryer if the ambient air temperature is below 70°F (21°C).
- The adhesive reaches full strength in 72 hours. Wait at least 24 hours before riding your motorcycle.
- Disconnect the negative (-) cable from the battery before installing this accessory.
- The memory of the clock will be erased when you disconnect the battery. Reset the clock after reconnecting the battery.
- Reinstall the removed parts on the motorcycle and make sure that the wires and harnesses are not pinched.

1. Remove the left saddlebag guard cover as shown.

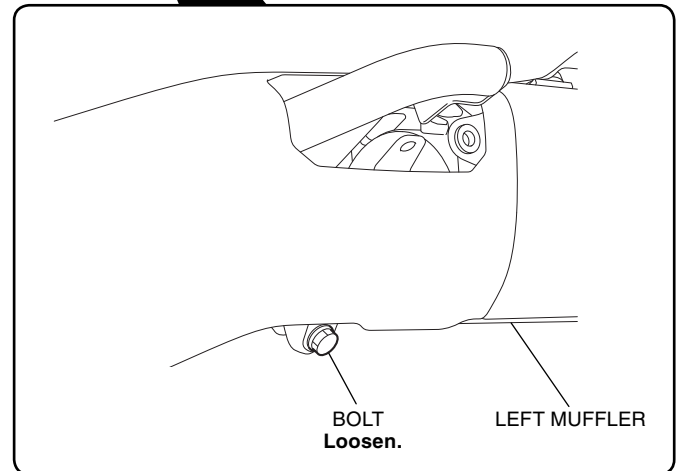
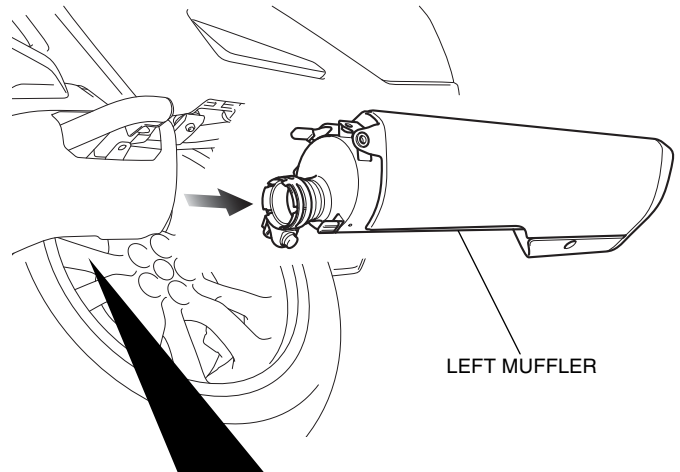
<Left side>



2. Remove the parts as shown.



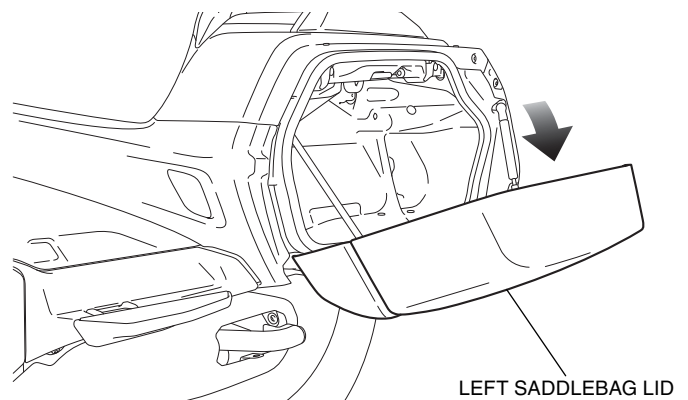
3. Loosen the bolt, then remove the left muffler as shown.



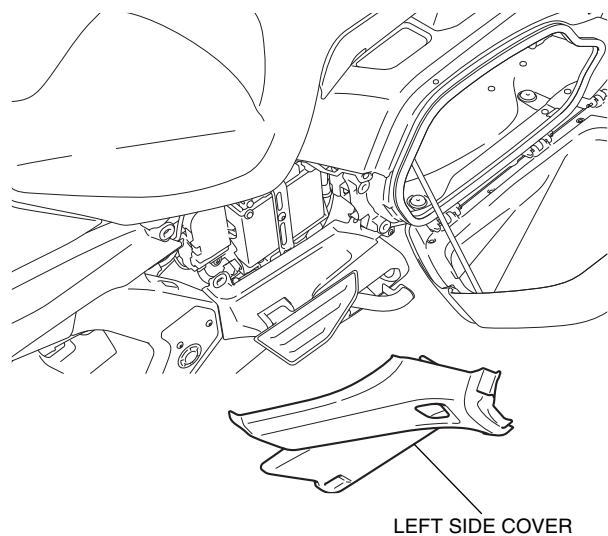
4. Open the left saddlebag lid as shown.

- Repeat on the right side.

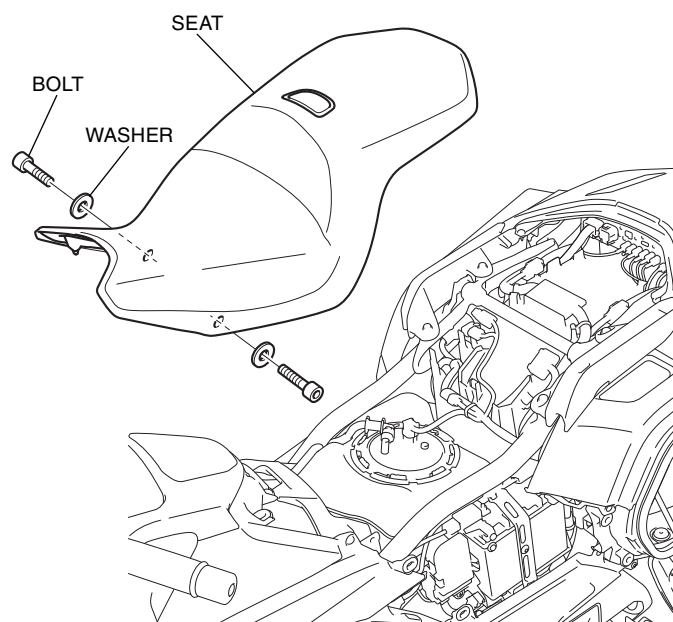
<Left side>



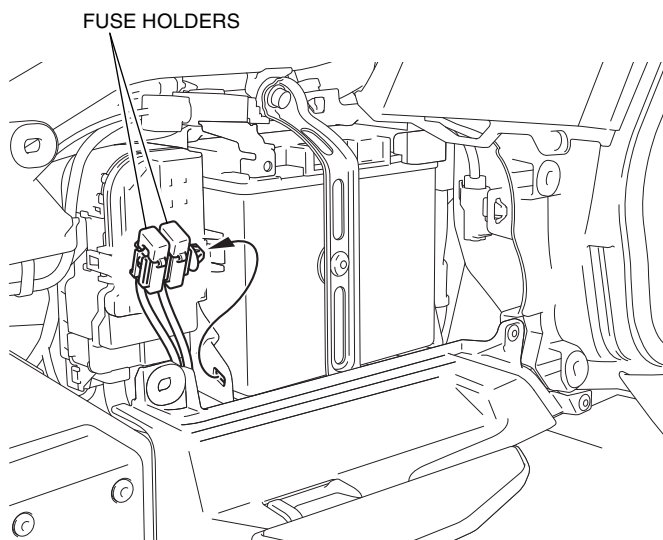
5. Remove the left side cover as shown, and disconnect the negative (-) cable of the battery.



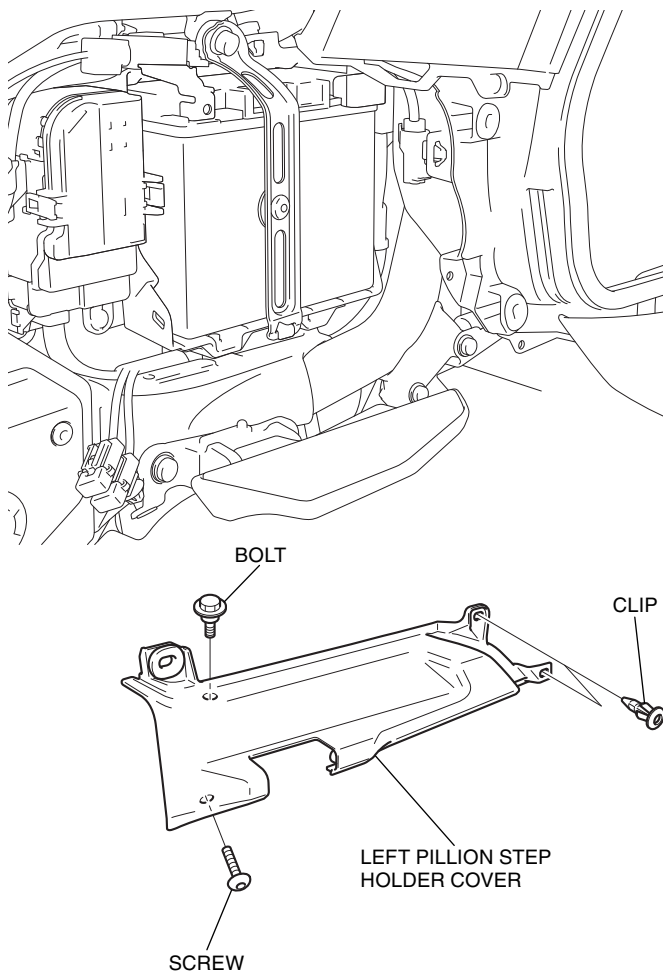
6. Remove the right side cover in the same manner as the left side.
7. Remove the seat as shown.



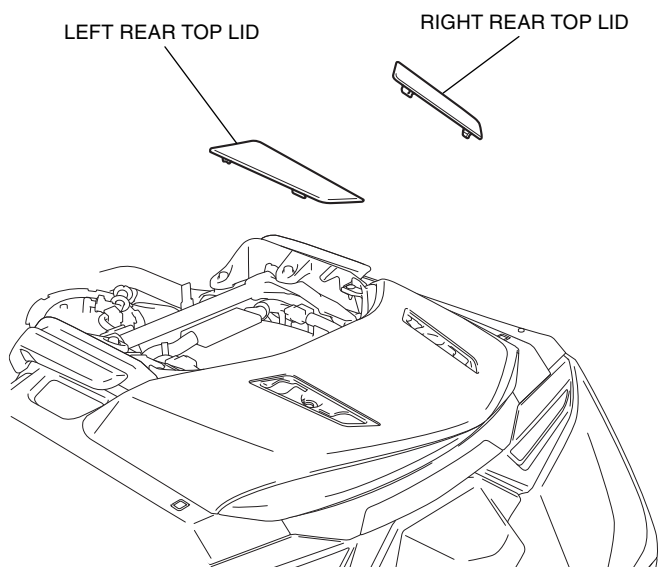
8. Remove the fuse holders as shown.
<Left side>



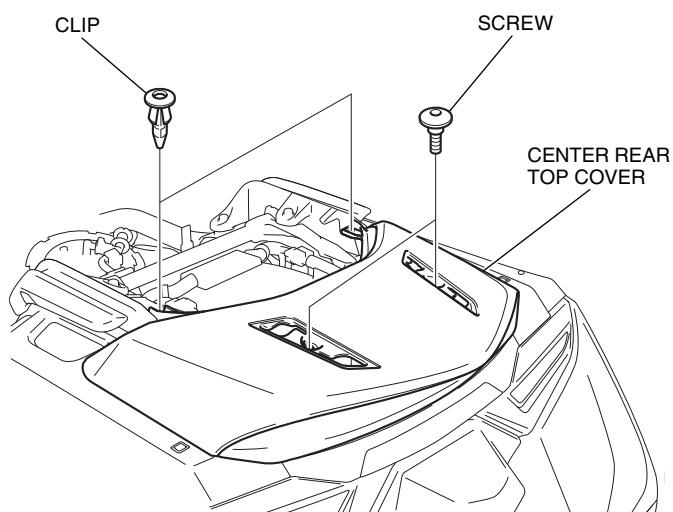
9. Remove the left pillion step holder cover as shown.
• Repeat on the right side.



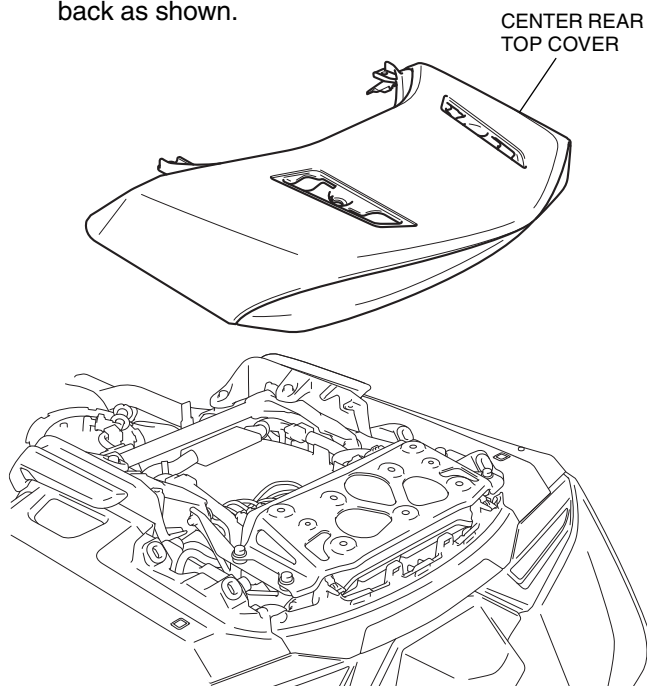
10. Remove the right and left rear top lid as shown.



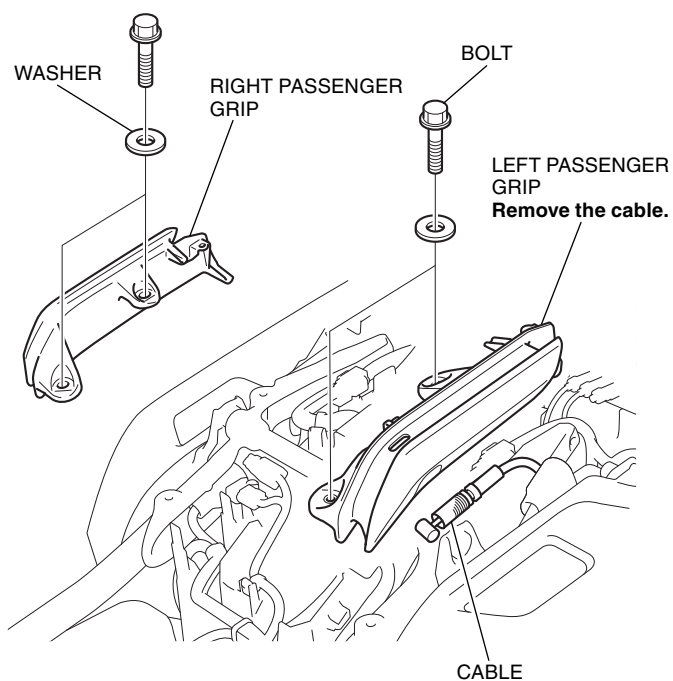
11. Remove the screws and clips as shown.



12. Remove the center rear top cover by pulling up and back as shown.

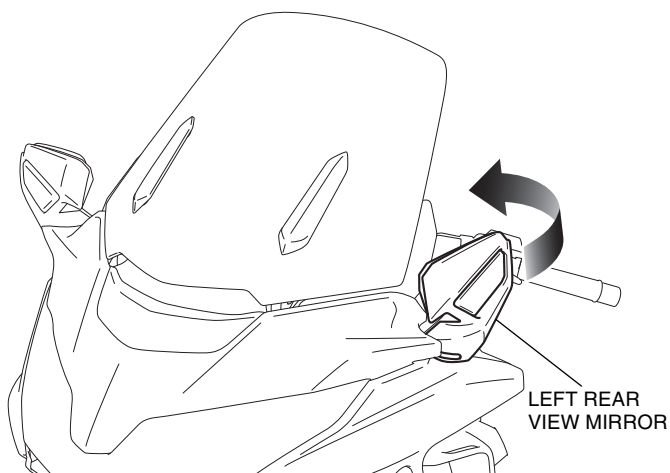


13. Remove the right and left passenger grip as shown.



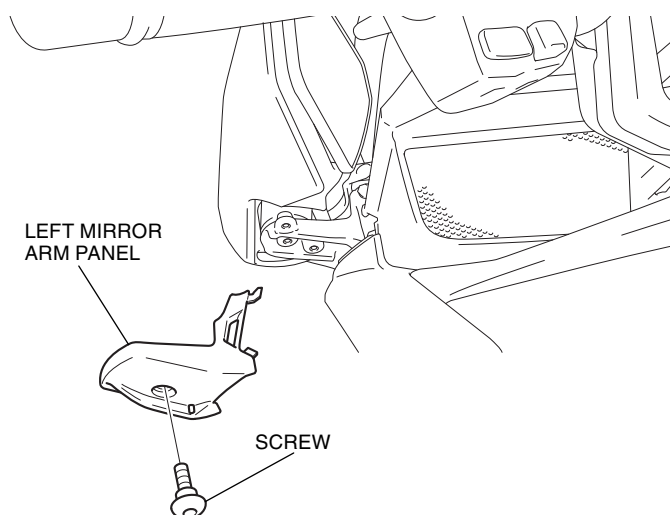
14. Fold down the left rear view mirror backward as shown.

<Left side>

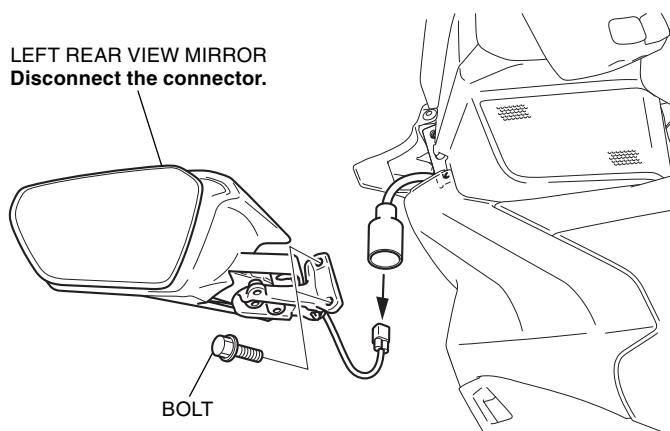


15. Remove the left mirror arm panel as shown.

<Left side>



16. Remove the left rear view mirror as shown.

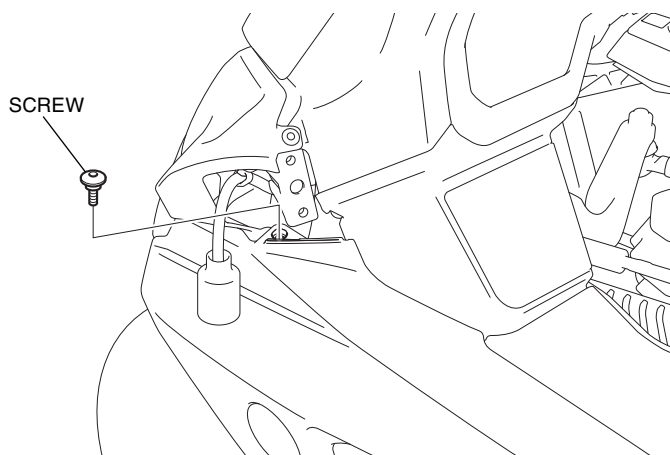


17. Remove the right mirror arm panel and right rear view mirror in the same manner as the left side.

18. Remove the screw as shown.

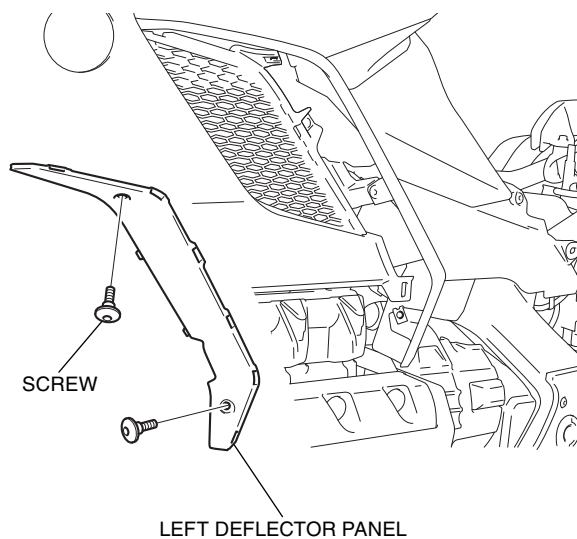
- Repeat on the right side.

<Left side>

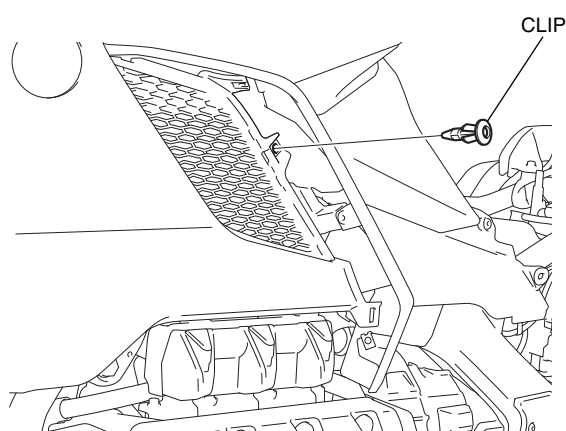


19. Remove the left deflector panel as shown.

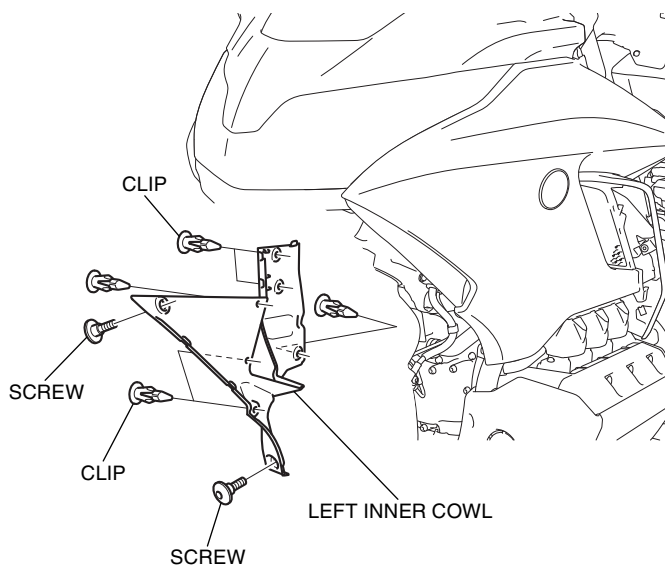
<Left side>



20. Remove the clip as shown.

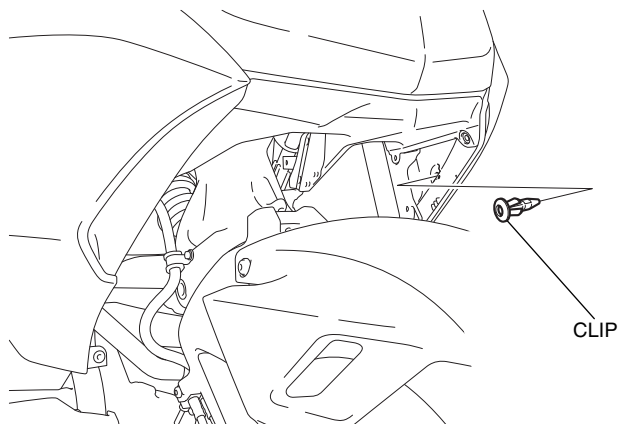


21. Remove the left inner cowl as shown.



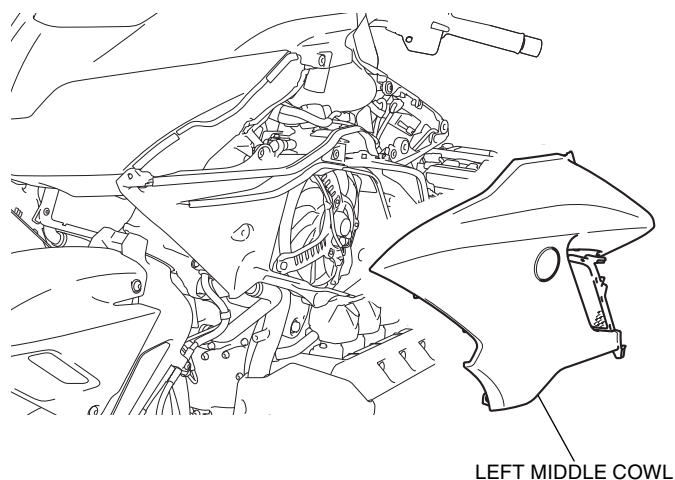
22. Remove the clip as shown.

<Left side>



23. Remove the left middle cowl as shown.

<Left side>

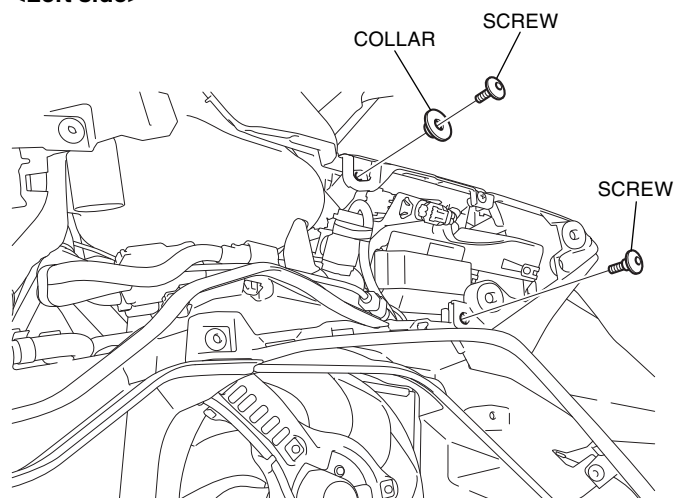


24. Remove the right deflector panel, right inner cowl and right middle cowl in the same manner as the left side.

25. Remove the parts as shown.

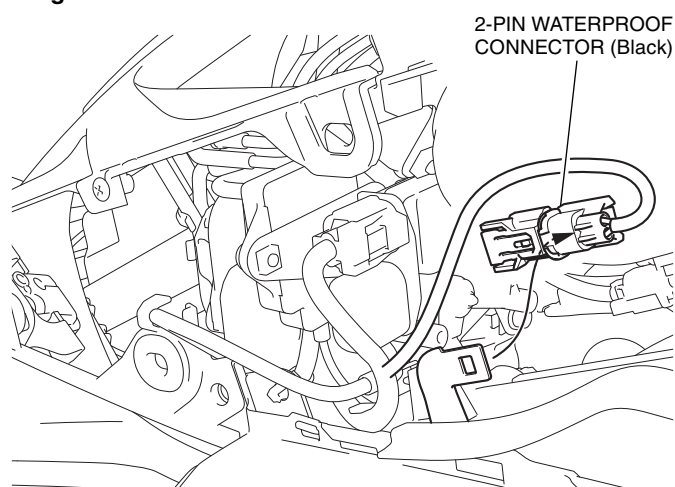
- Repeat on the right side.

<Left side>

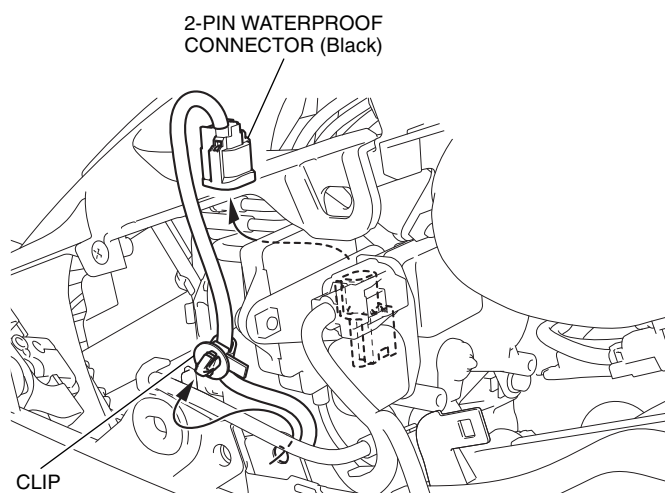


26. Remove the connector as shown.

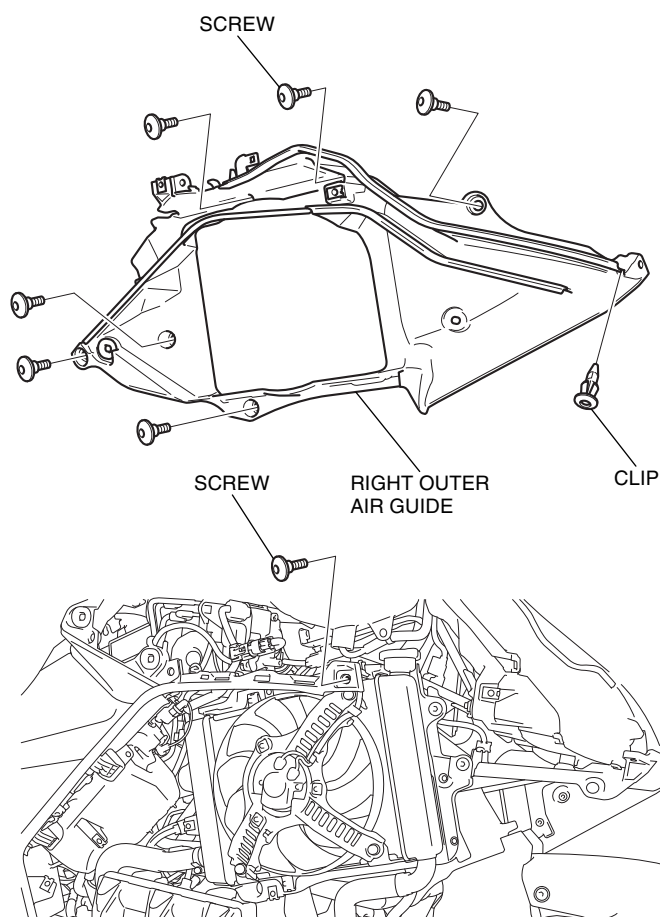
<Right side>



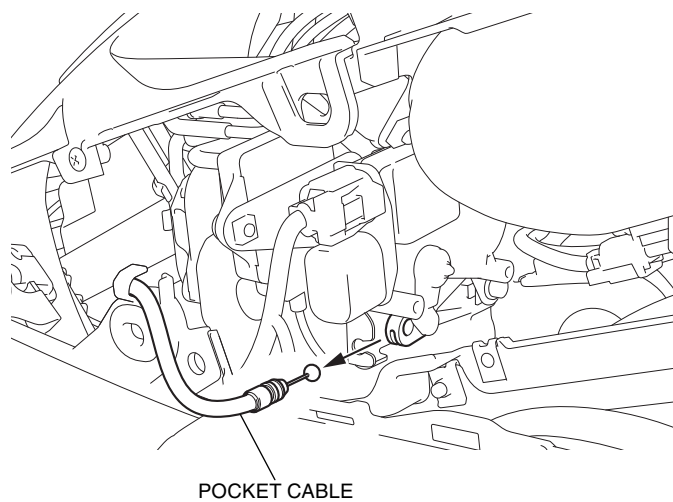
27. Remove the clip and disconnect the connector as shown.



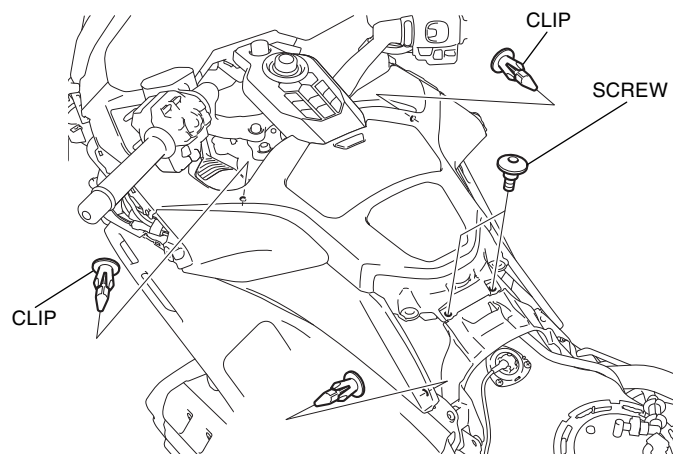
28. Remove the right outer air guide as shown.



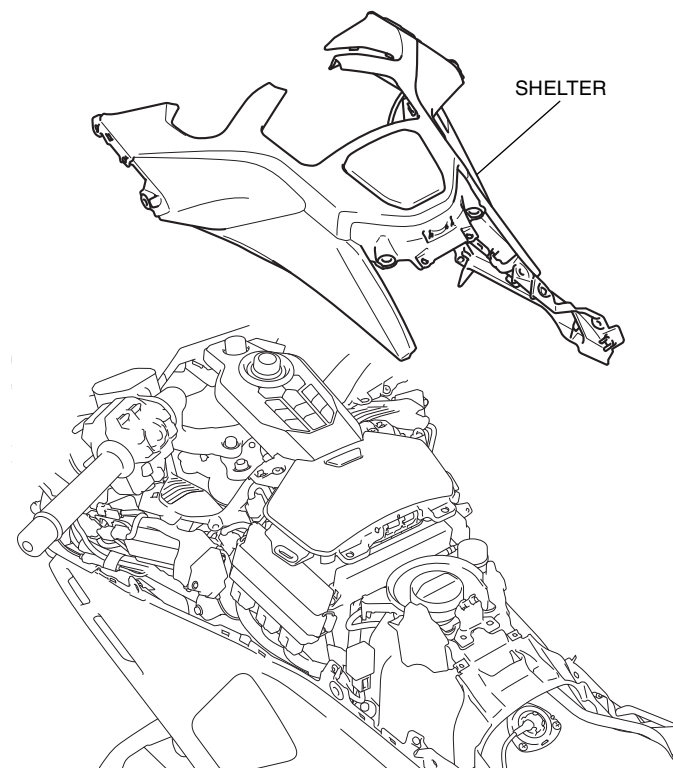
29. Remove the pocket cable as shown.



30. Remove the parts as shown.



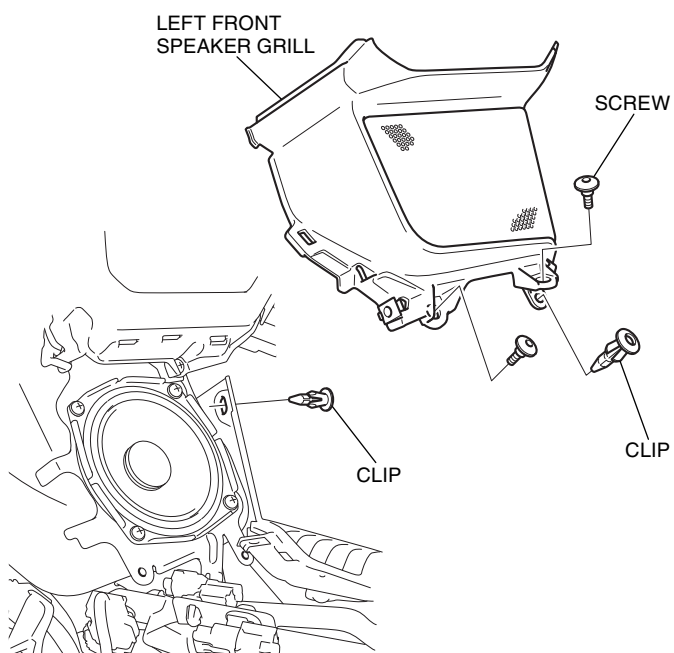
31. Remove the shelter as shown.



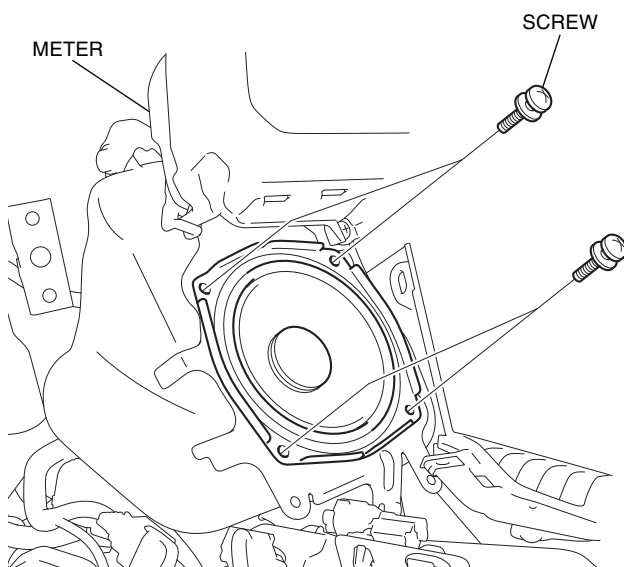
32. Remove the left front speaker grill as shown.

- Repeat on the right side.

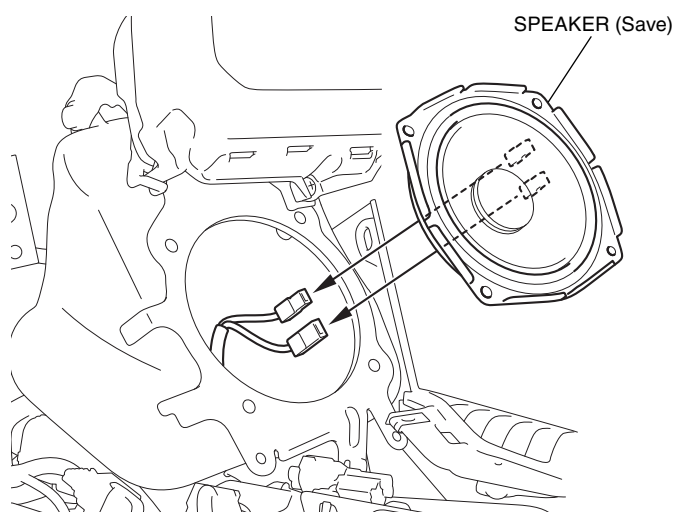
<Left side>



33. Remove the screws as shown.



34. Remove the speaker as shown.

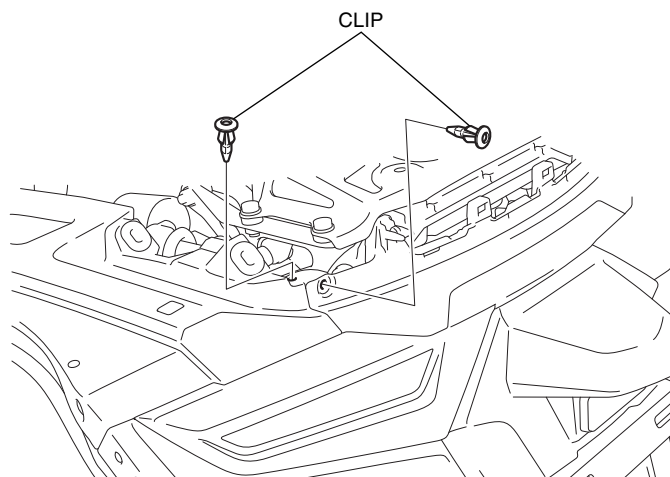


35. Remove the right side speaker in the same manner as the left side.

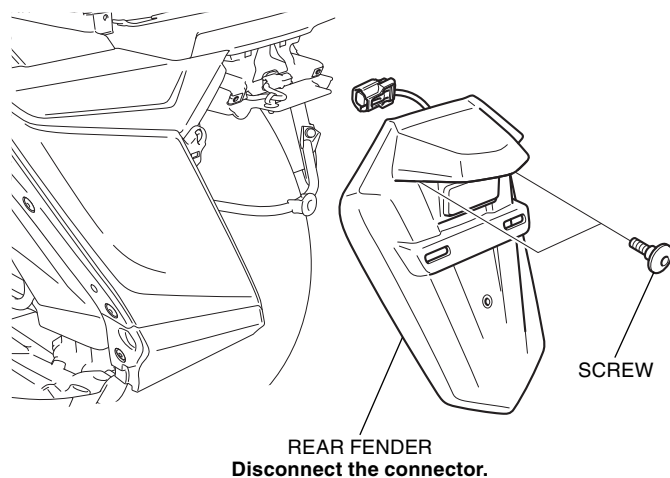
36. Remove the clips as shown.

- Repeat on the right side.

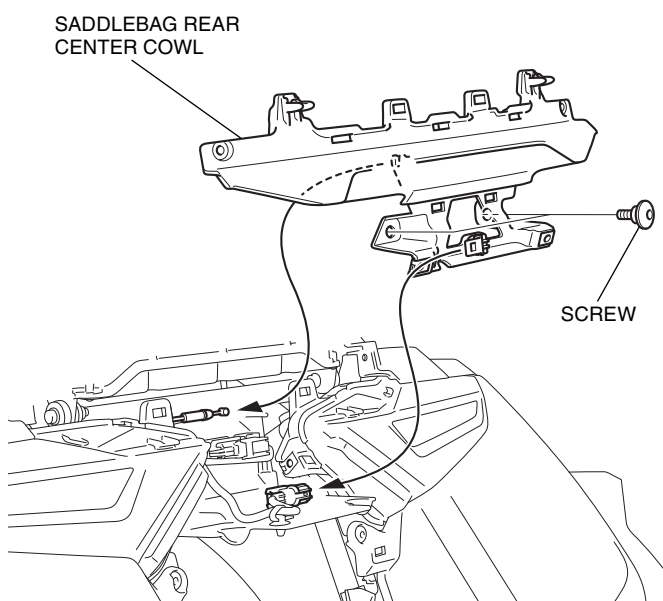
<Left side>



37. Remove the rear fender as shown.



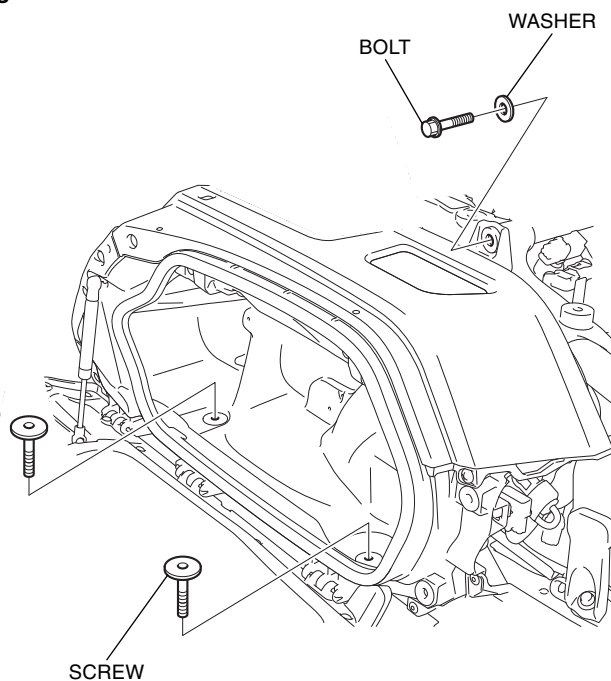
38. Remove the saddlebag rear center cowl as shown.



39. Remove the parts as shown.

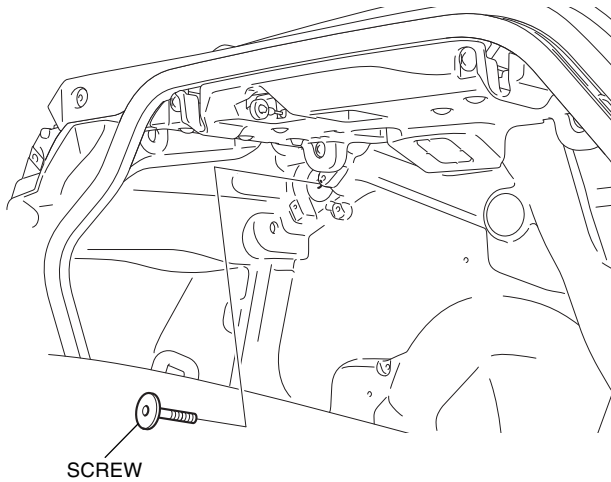
- Repeat on the left side.

<Right side>

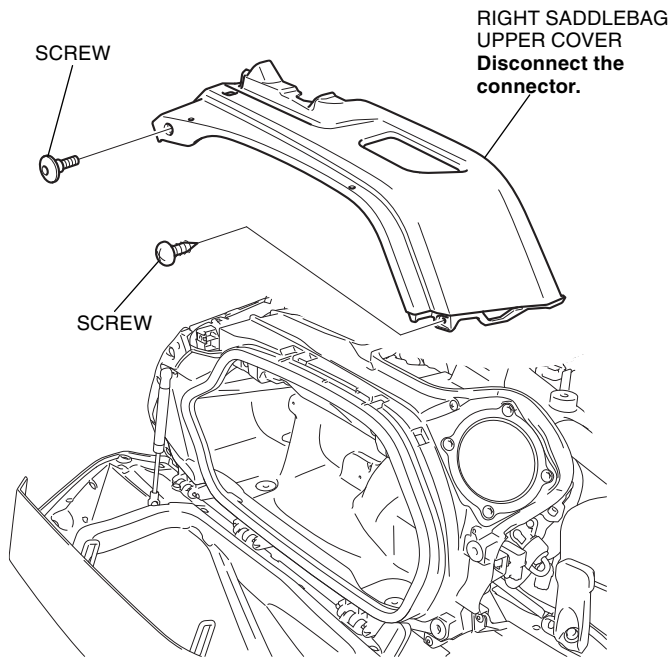


40. Remove the screw as shown.

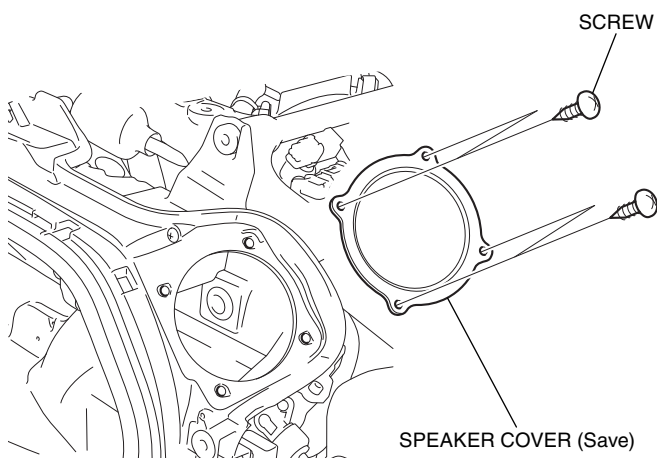
- **Repeat on the left side.**



41. Remove the right saddlebag upper cover as shown.



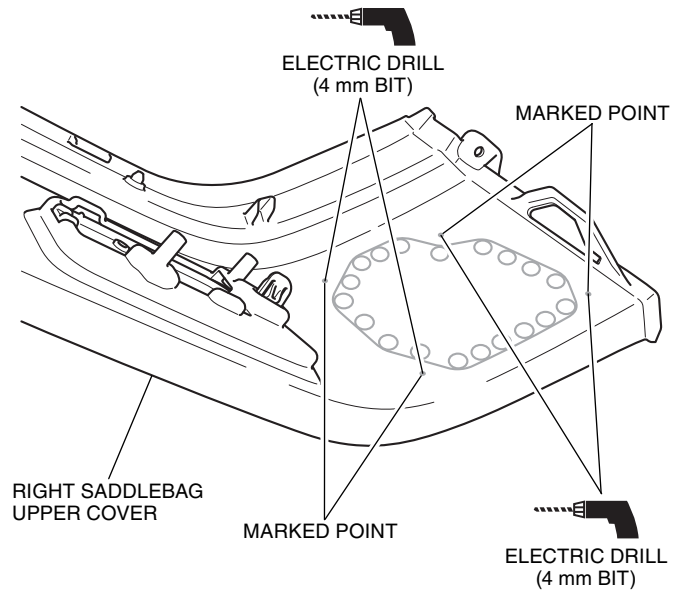
42. Remove the speaker cover as shown.



43. Remove the left saddlebag upper cover and speaker cover in the same manner as the right side.

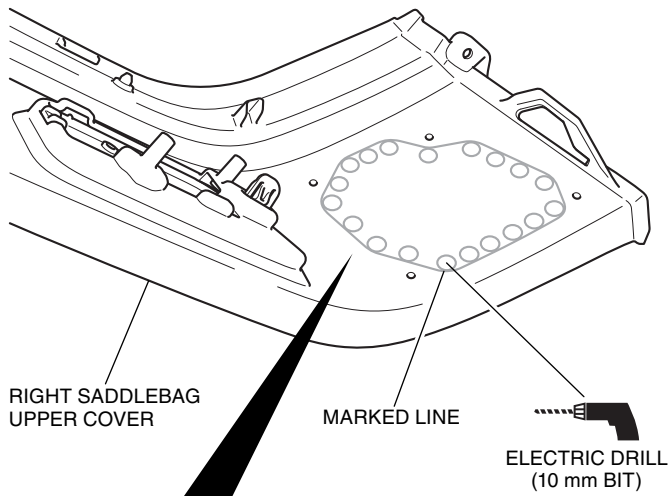
44. Drill at the marked points of the right saddlebag upper cover as shown.

- **Remove the any burrs from the edge of the hole.**

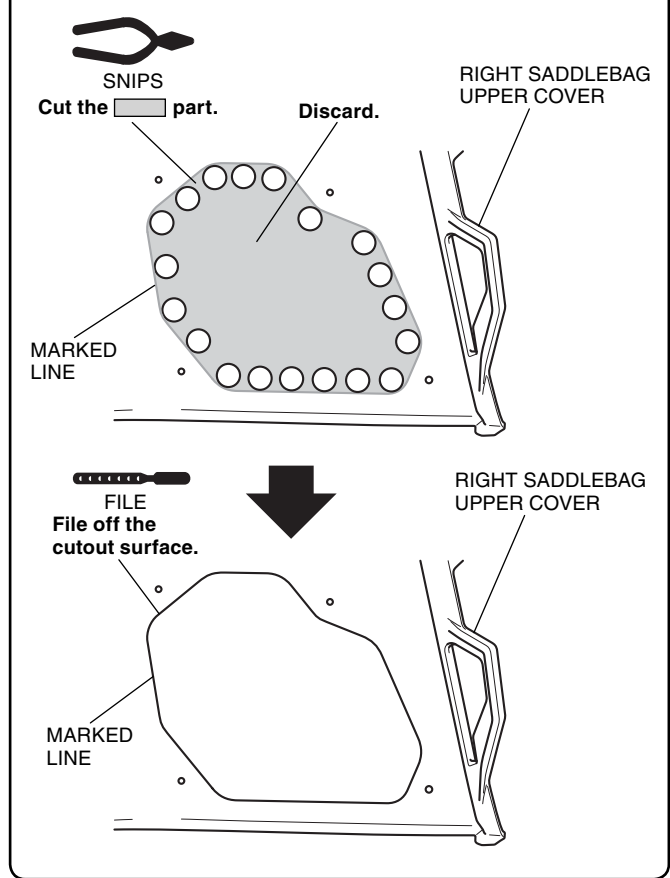


45. Drill at the marked lines of the right saddlebag upper cover as shown.

- **Drill holes at the center of the marked lines.**

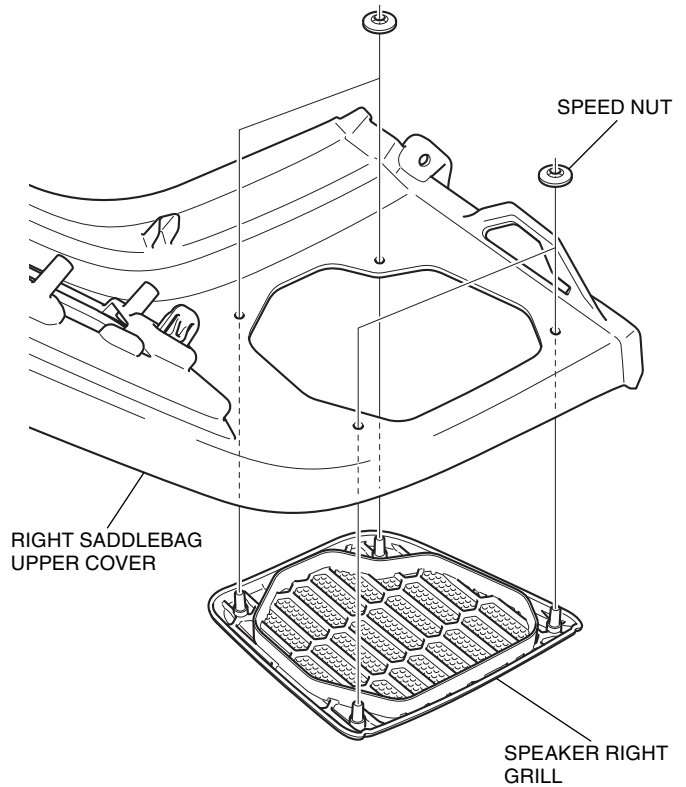


After cutting, finish with a file.



46. Cut the left saddlebag upper cover in the same manner as the right side.

47. Install the speaker right grill as shown.

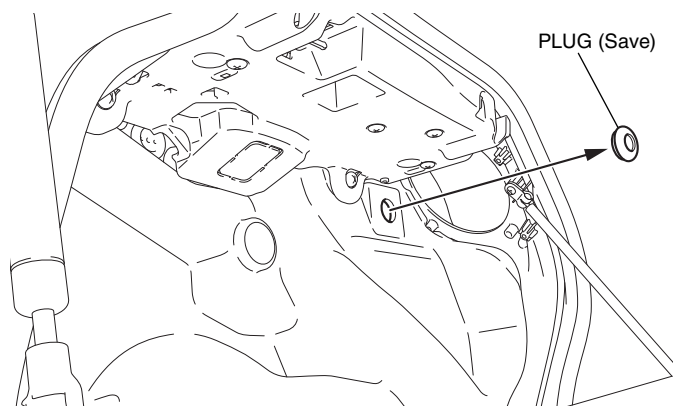


48. Install the speaker left grill in the same manner as the right side.

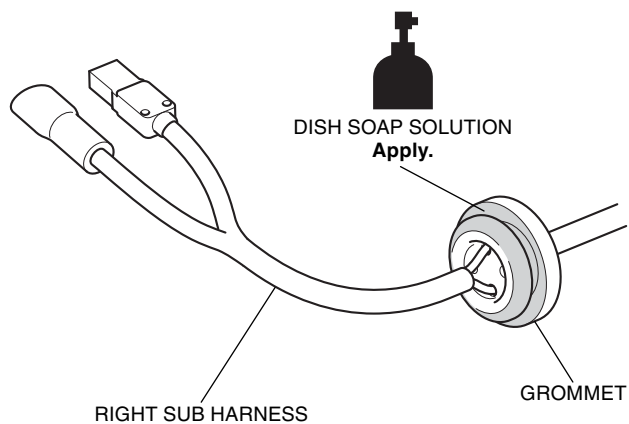
49. Remove the plug as shown.

- **Repeat on the left side.**

<Right side>

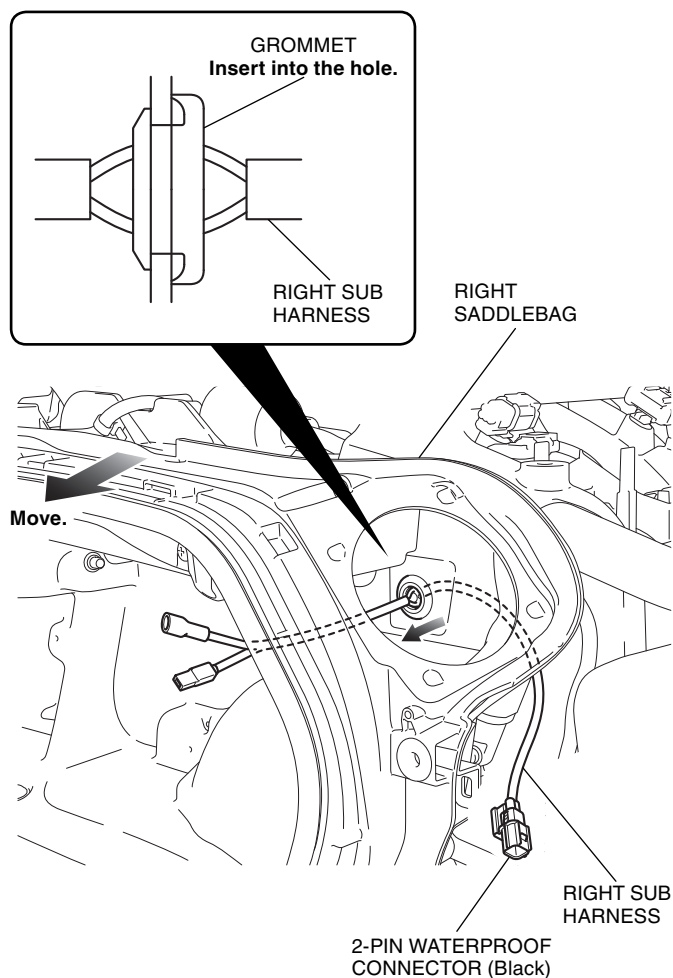


50. Apply dish soap solution to the position shown.

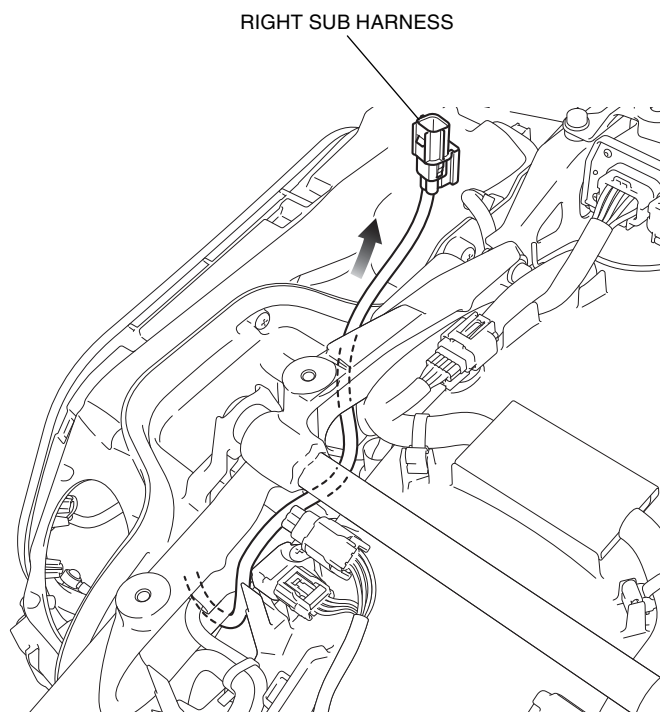


51. Move the right saddlebag and route the right sub harness as shown.

- Repeat on the left side.

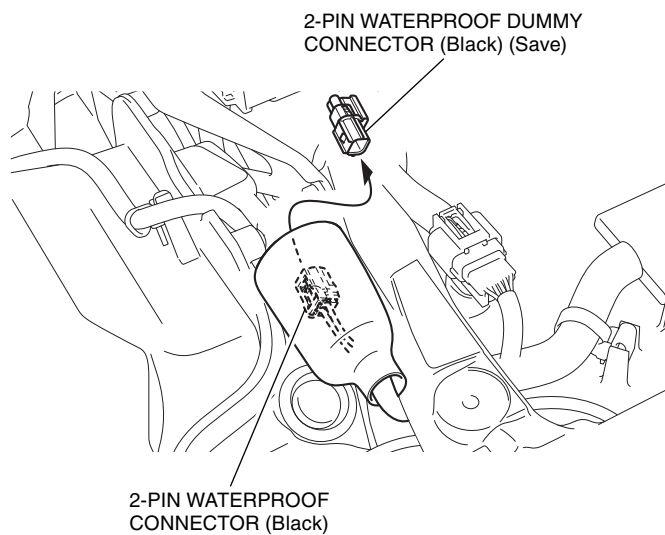


52. Route the right sub harness as shown.

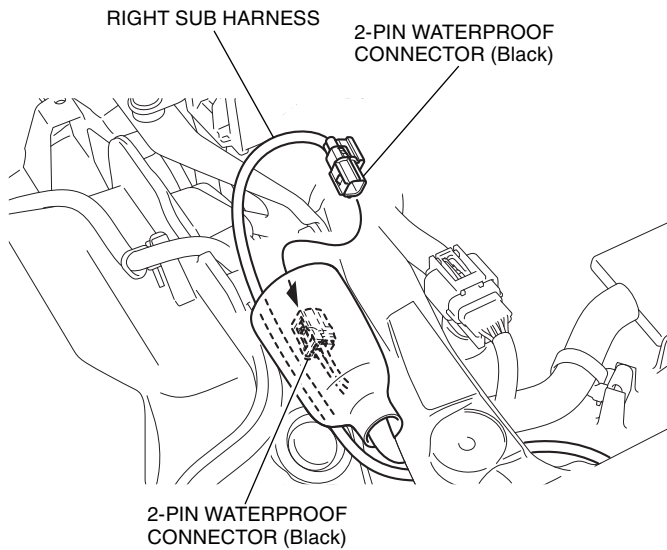


53. Install the right saddlebag in the reverse order of removal.

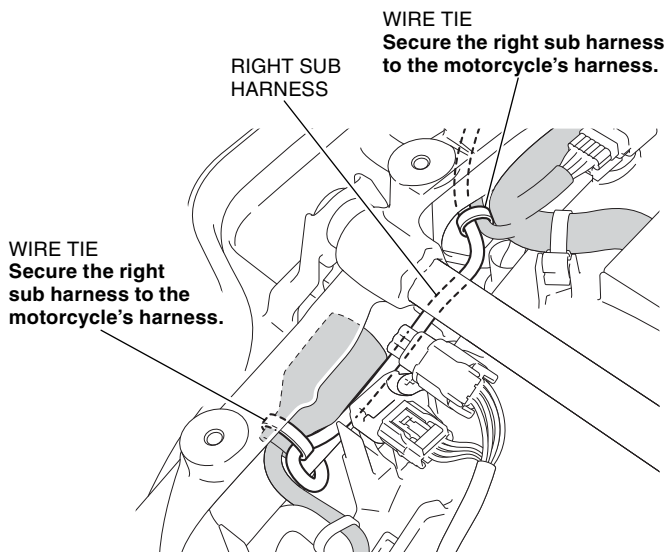
54. Remove the dummy connector as shown.



55. Connect the right sub harness as shown.

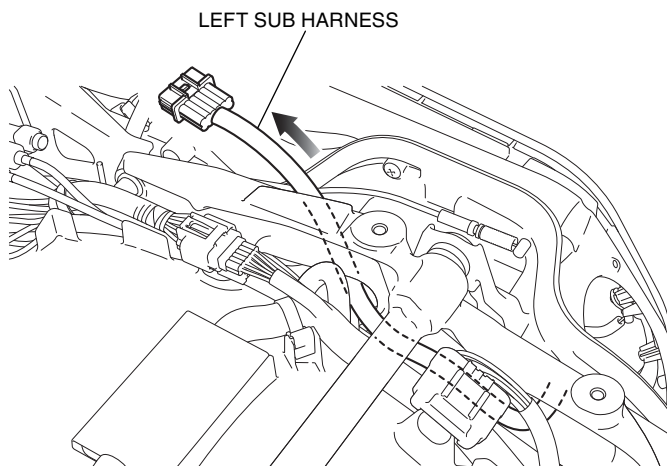


56. Secure the right sub harness with the wire ties as shown.



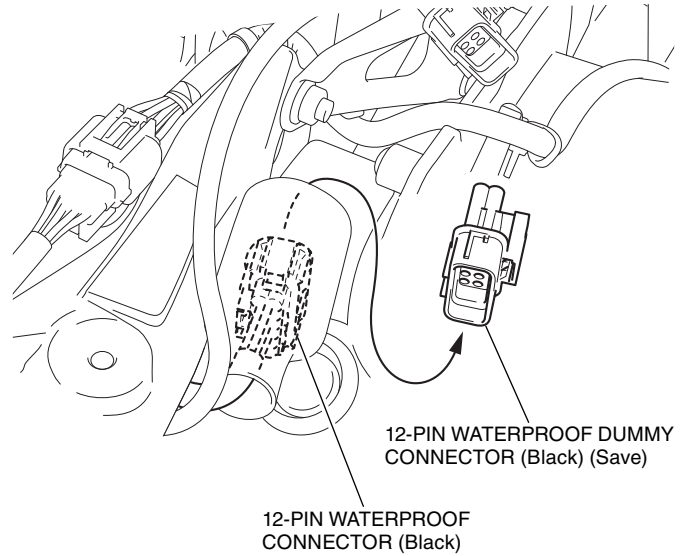
57. Route the left sub harness as shown.

<Left side>

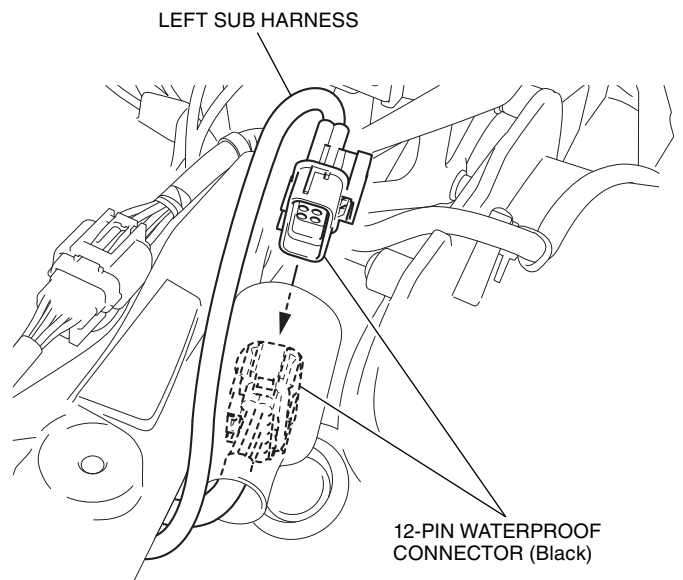


58. Install the left saddlebag in the reverse order of removal.

59. Remove the dummy connector as shown.

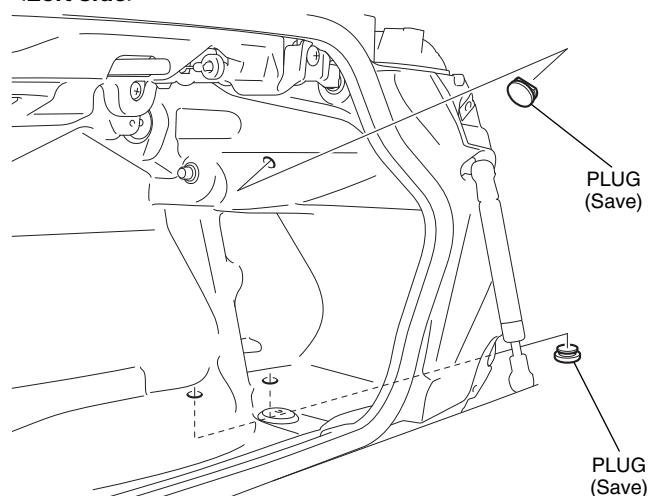


60. Connect the left sub harness as shown.

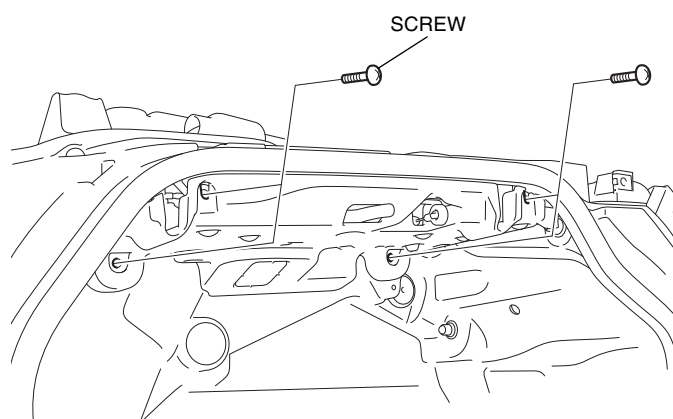


61. Remove the plugs as shown.

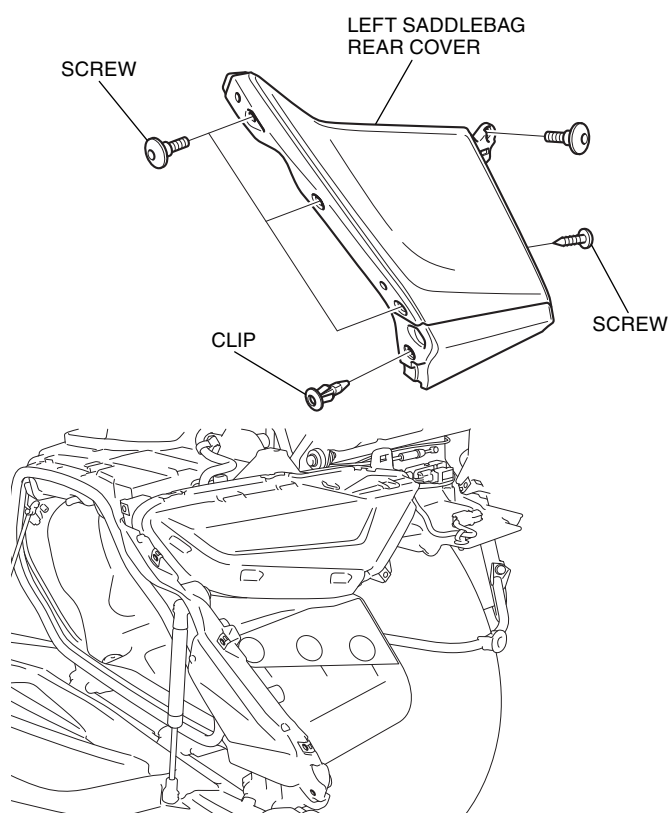
<Left side>



62. Remove the screws as shown.

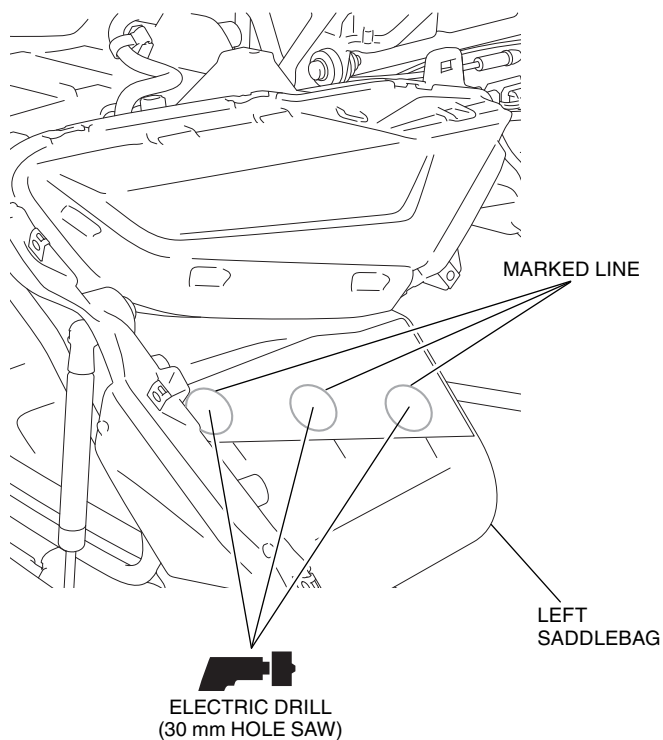


63. Remove the left saddlebag rear cover as shown.



64. Drill 30 mm hole at each marked line of the left saddlebag as shown.

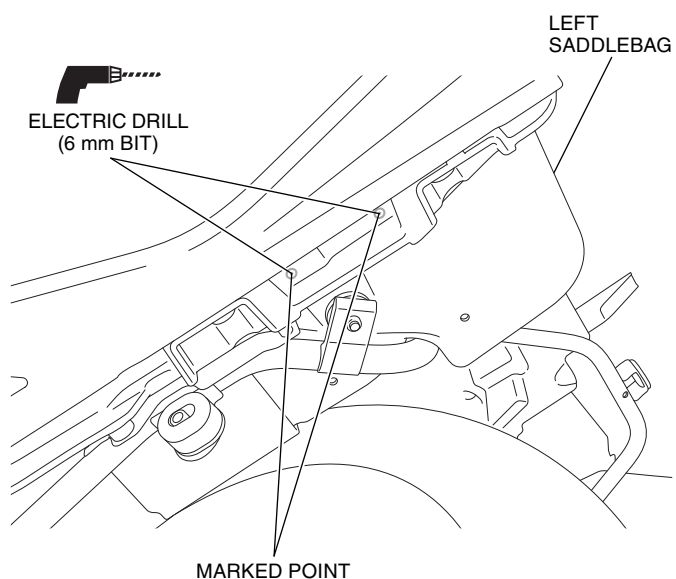
- Drill holes at the center of the marked lines.
- Remove the any burrs from the edge of the hole.



65. Drill a 6 mm hole each marked point of the left saddlebag as shown.

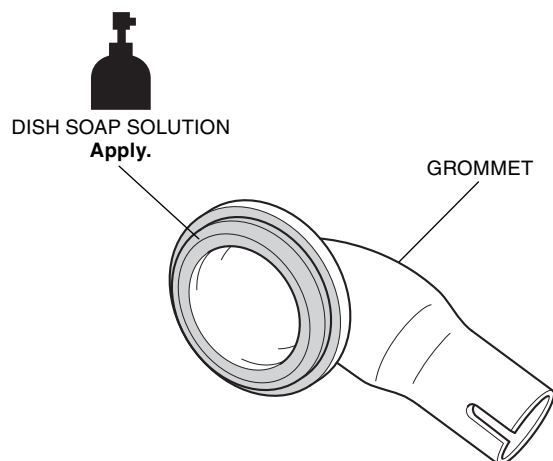
- Remove the any burrs from the edge of the hole.

<Under side>

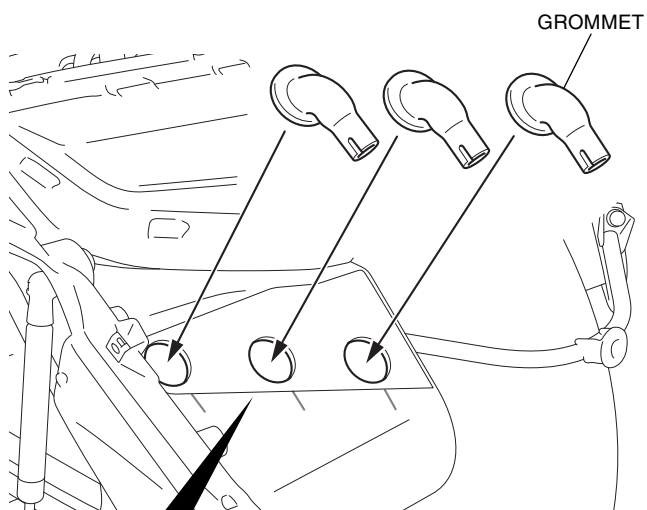


66. Apply dish soap solution to the position shown.

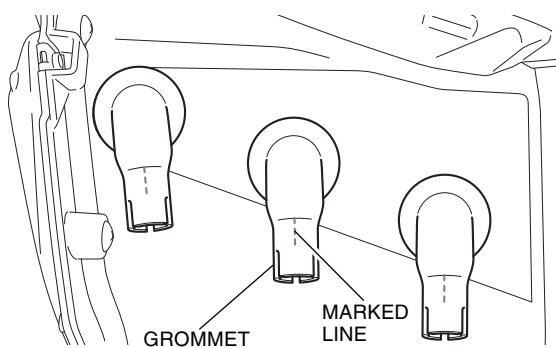
- **Perform this step for all three grommets.**



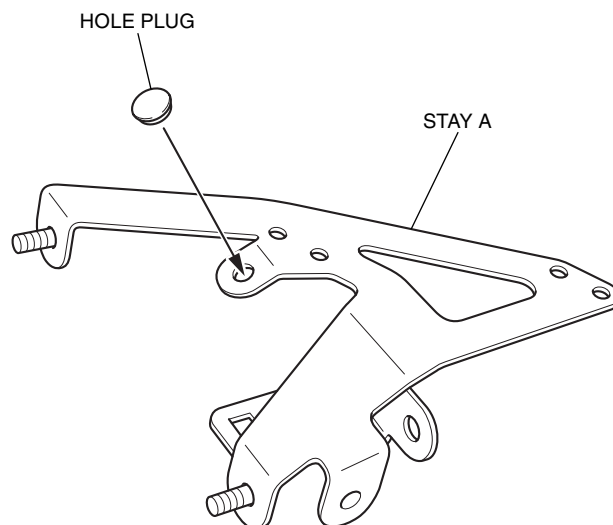
67. Install the grommets at positions shown.



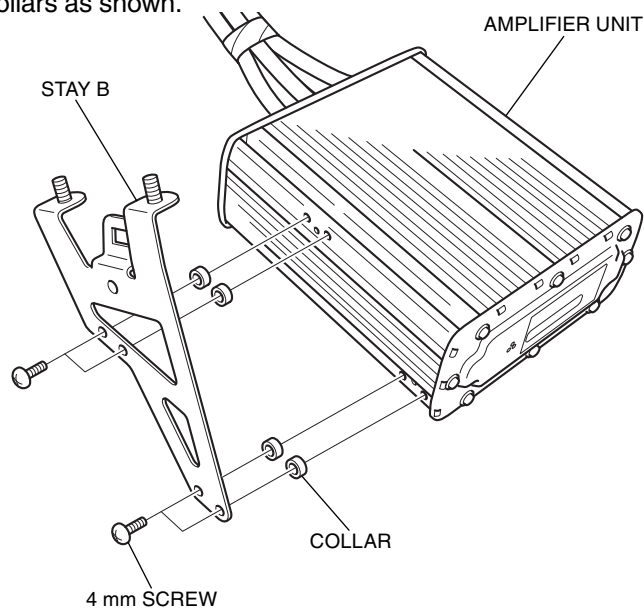
Align the end of grommet with the marked line as shown.



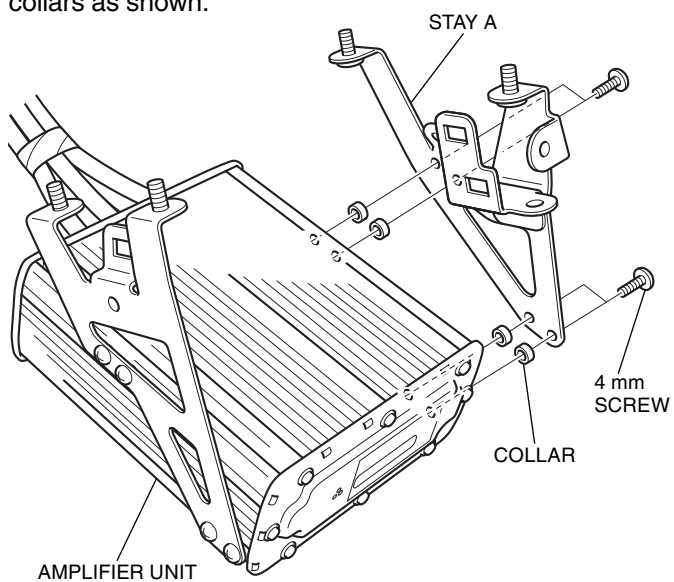
68. Install the hole plug as shown.



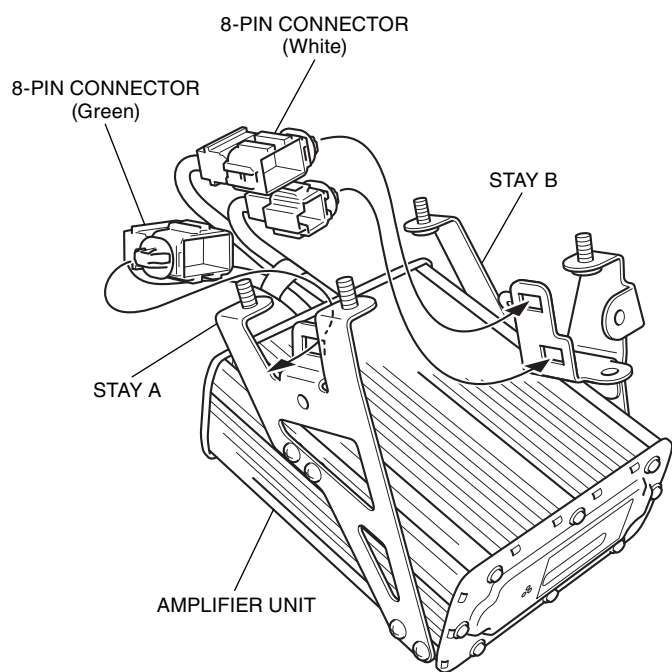
69. Install stay-B to the amplifier unit with the screws and collars as shown.



70. Install stay-A to the amplifier unit with the screws and collars as shown.

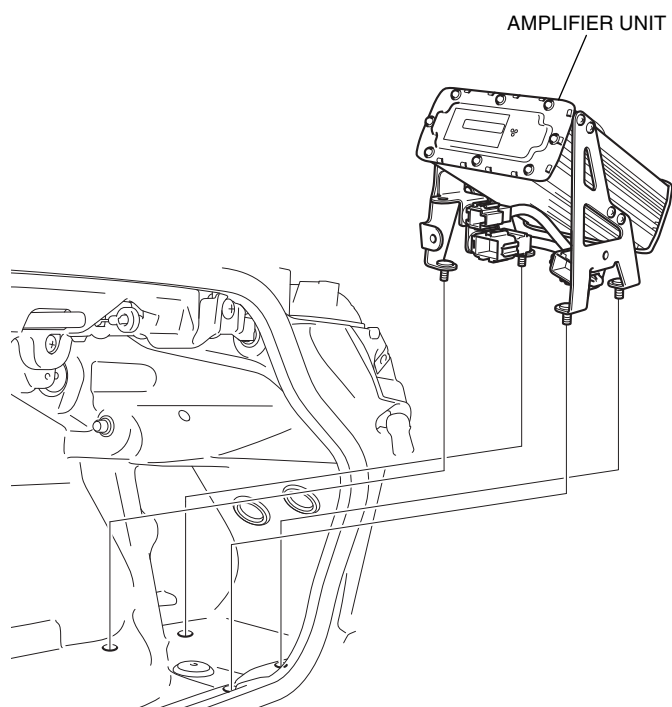


71. Secure the connectors as shown.



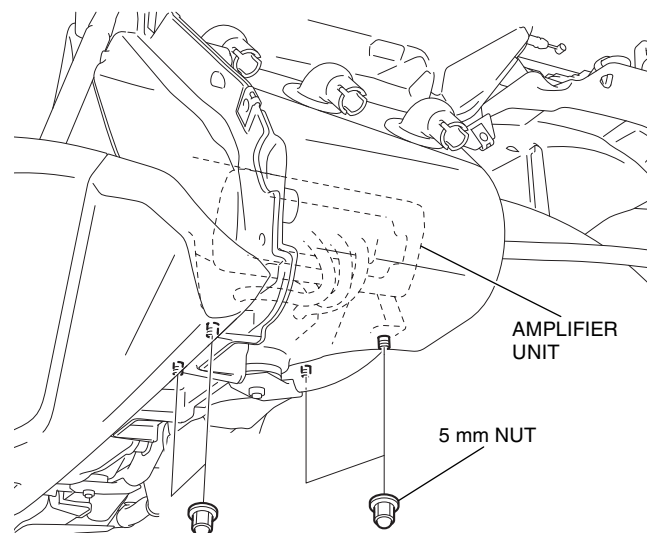
72. Install the amplifier unit as shown.

<Left side>



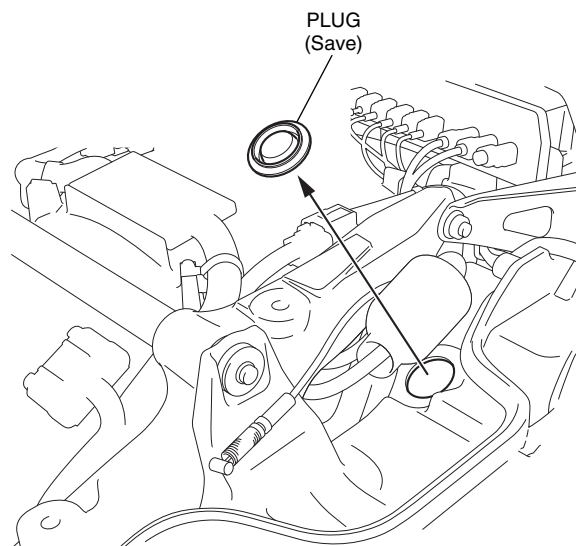
73. Install the 5 mm nuts as shown.

<Left side>

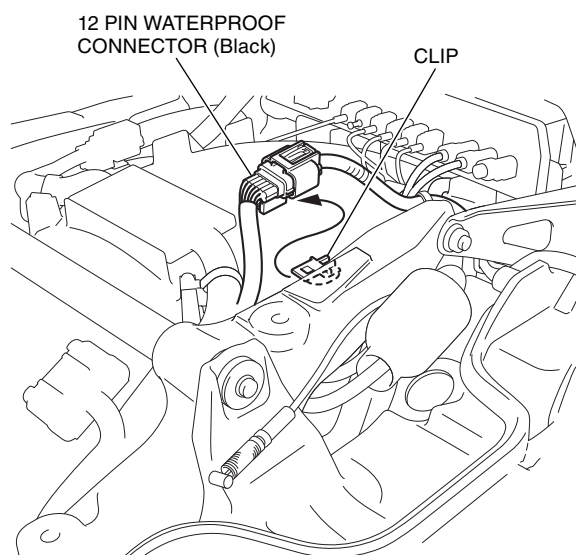


74. Remove the plug as shown.

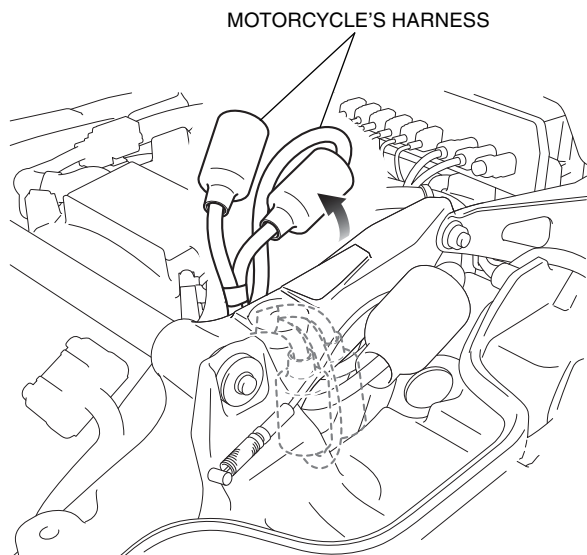
<Left side>



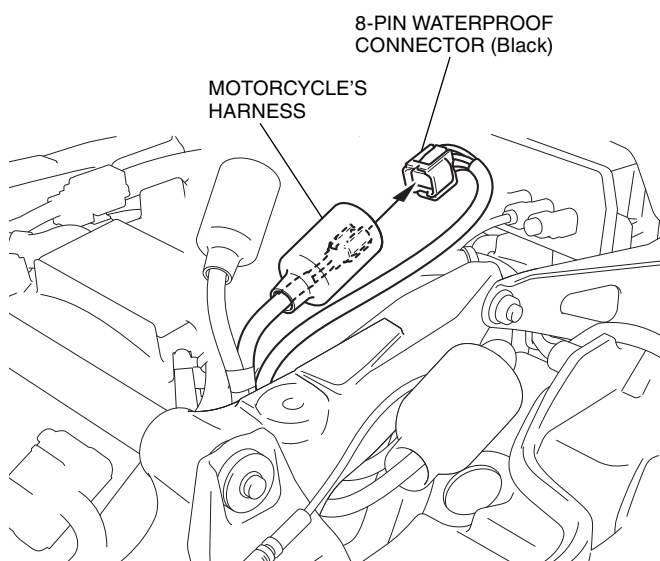
75. Remove the 12P black connector as shown.



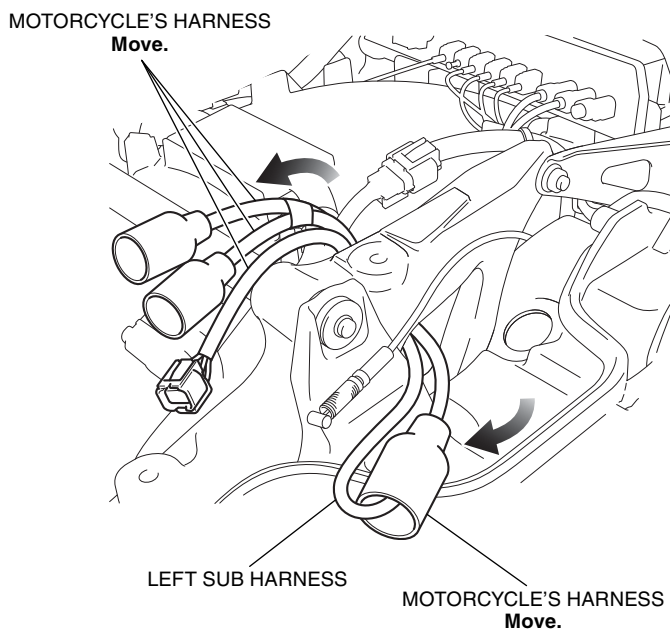
76. Move the motorcycle's harnesses as shown.



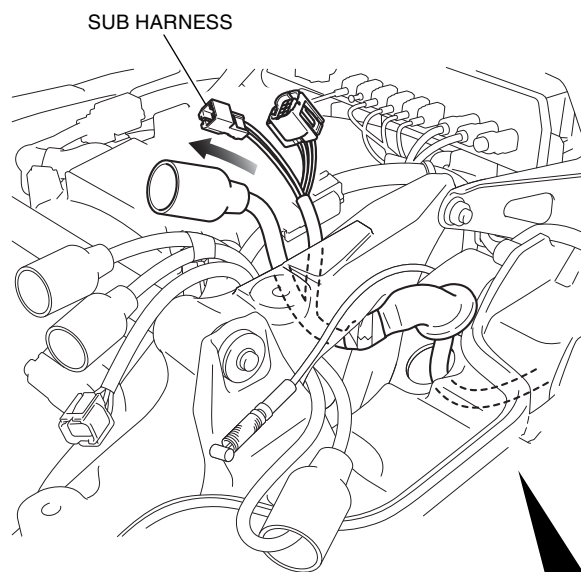
77. Disconnect the 8P black connector as shown.



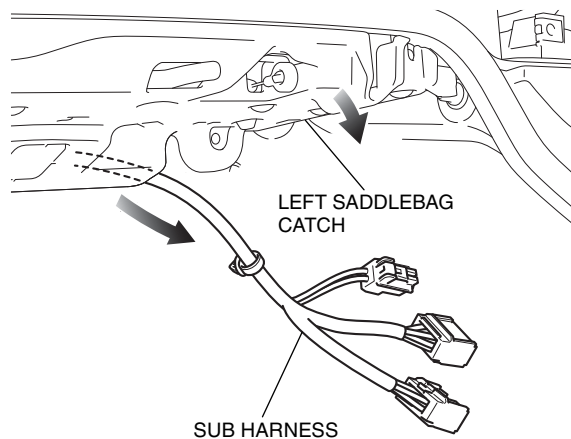
78. Move the motorcycle's harnesses to the positions shown.



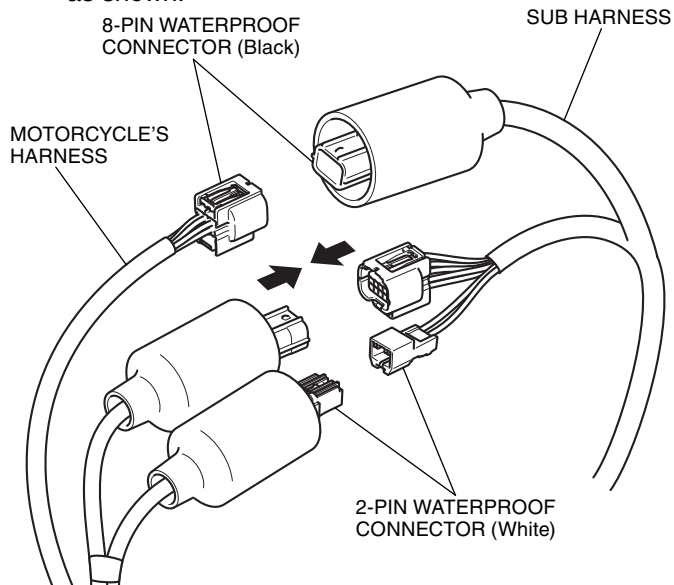
79. Route the sub harness as shown.



Move the left saddlebag catch and route the sub harness as shown.

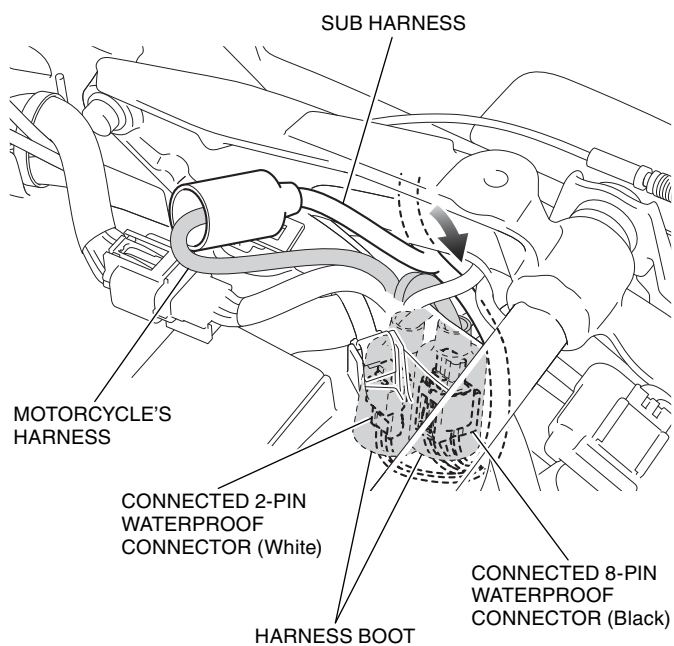


80. Connect the sub harness to the motorcycle's harness as shown.

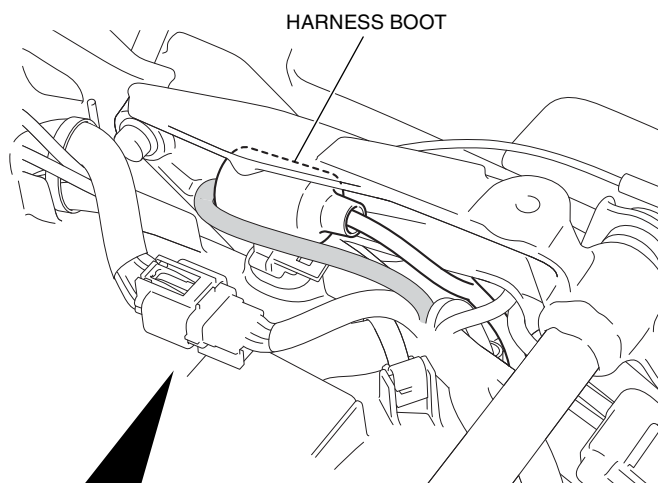


81. Store the harness boots as shown.

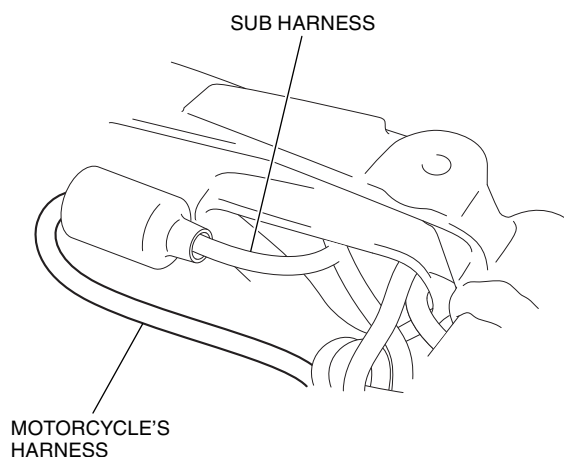
<Left side>



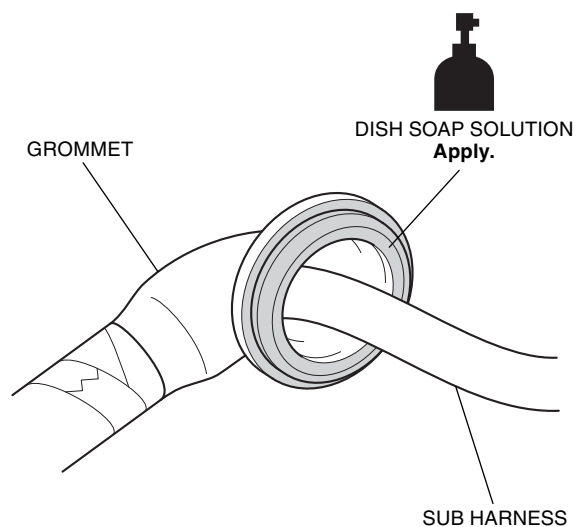
82. Store the boot as shown.



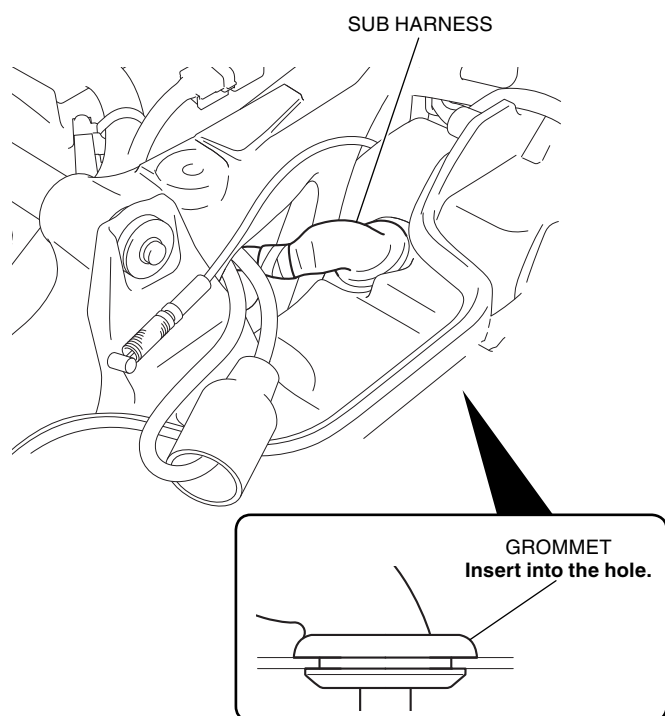
Fold back the motorcycle's harness as shown.



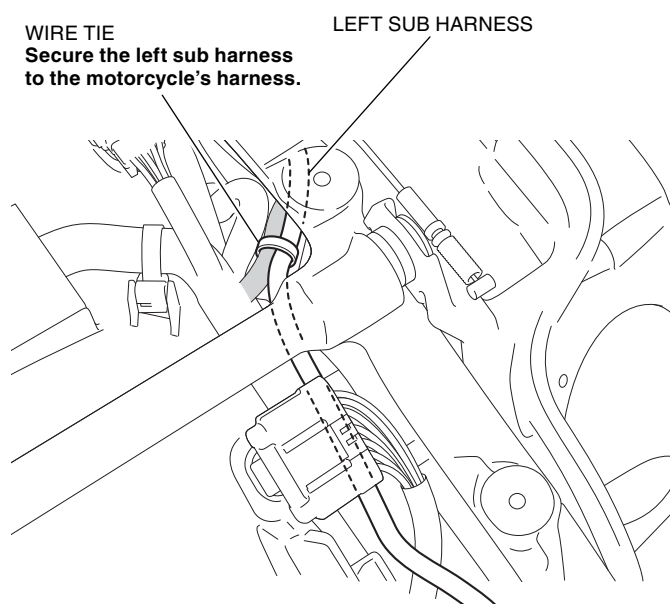
83. Apply dish soap solution to the position shown.



84. Install the sub harness as shown.

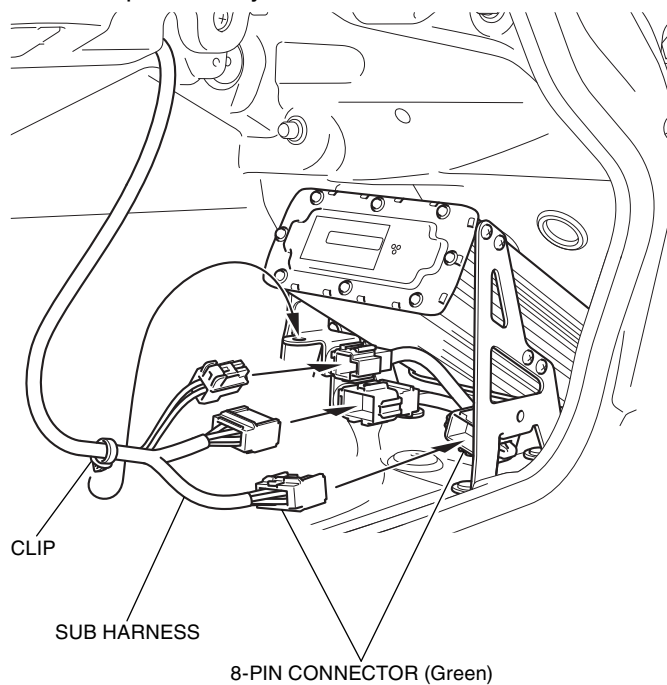


85. Secure the left sub harness with the wire tie as shown.

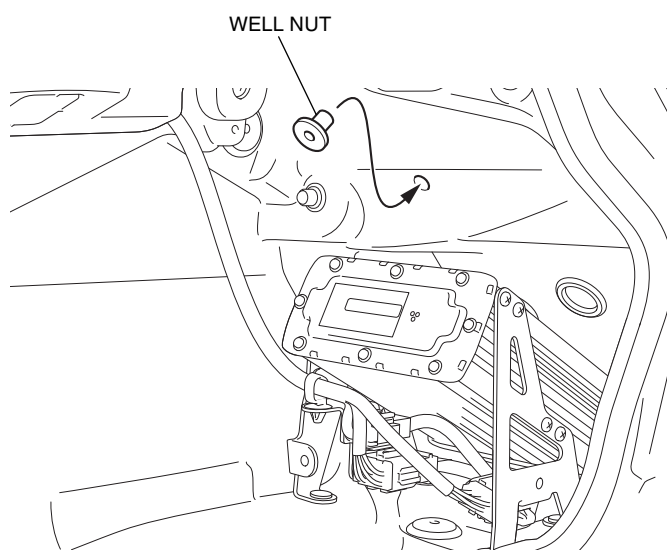


86. Install the left saddlebag catch in the reverse order of removal.

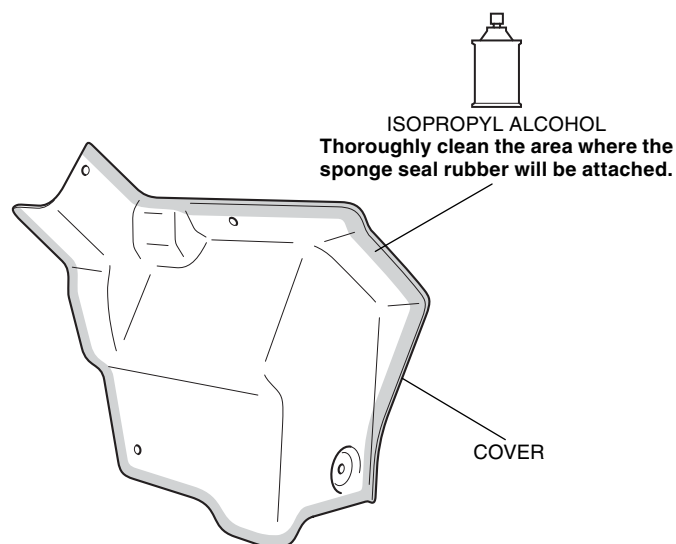
87. Connect the sub harness to the amplifier and install the clip to the stay as shown.



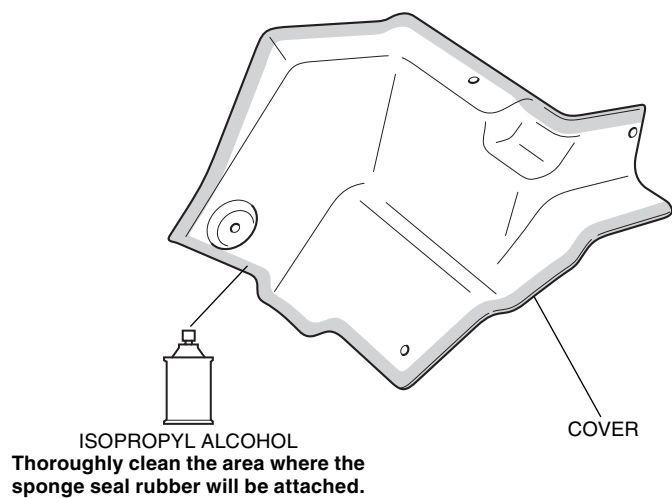
88. Install the well nut as shown.



89. Clean the surface of the area shown using isopropyl alcohol.

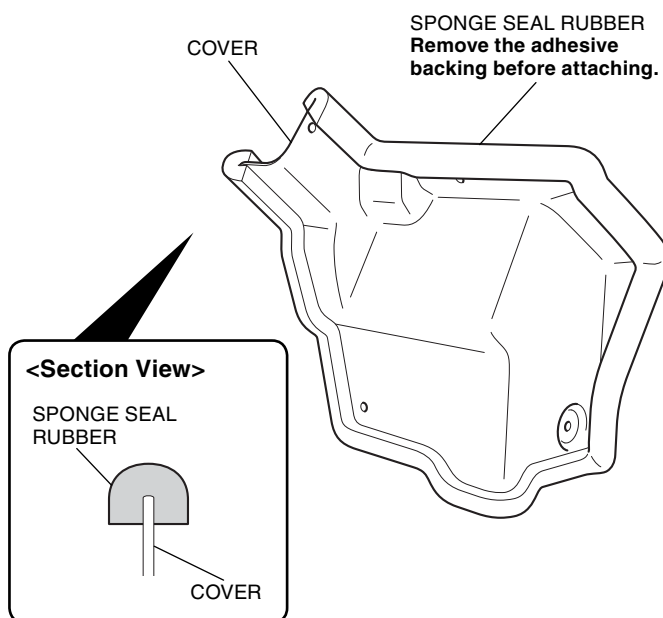


<Backside>



90. Attach the sponge seal rubber as shown.

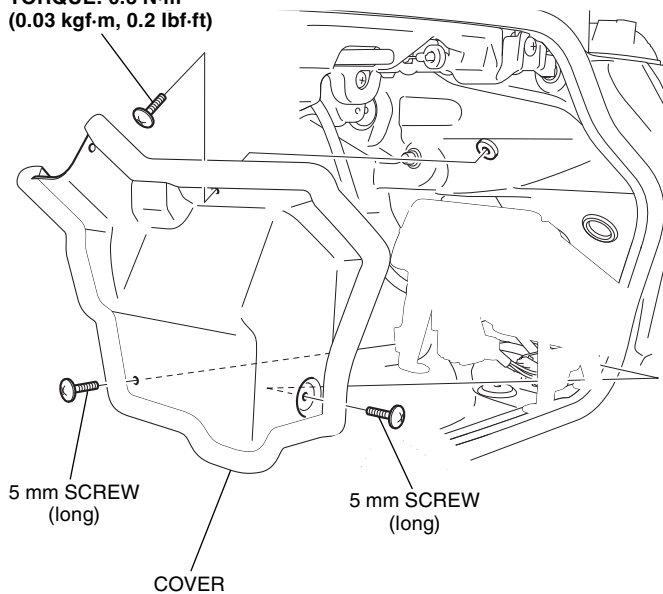
- Trim the excess end off the sponge seal rubber.



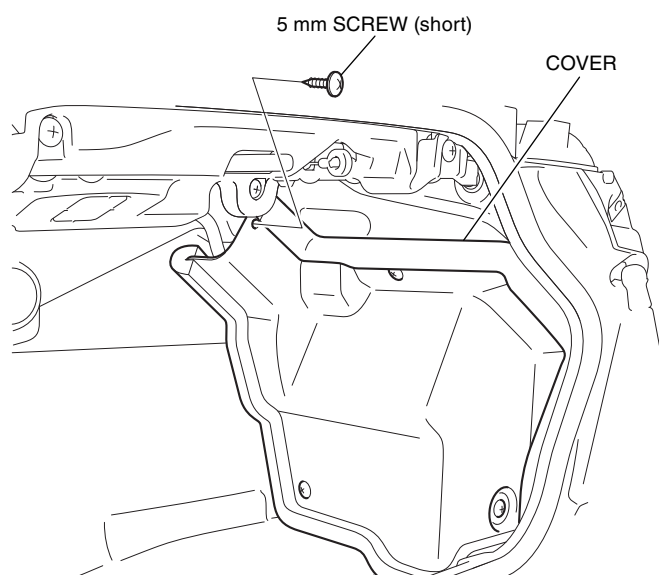
91. Install the cover as shown.

- Confirm that any wire harness is not caught or too tight.

5 mm SCREW (long)
TORQUE: 0.3 N·m
(0.03 kgf·m, 0.2 lbf·ft)

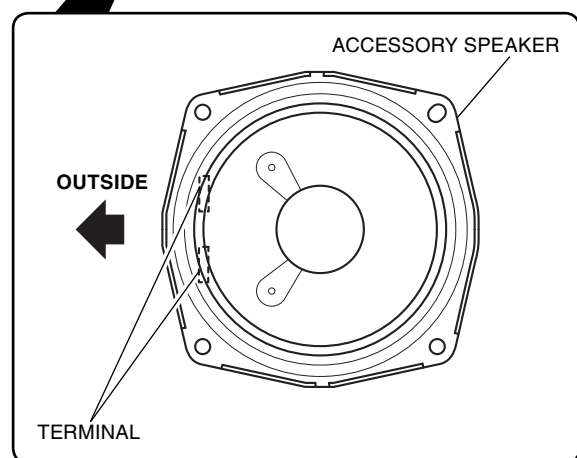
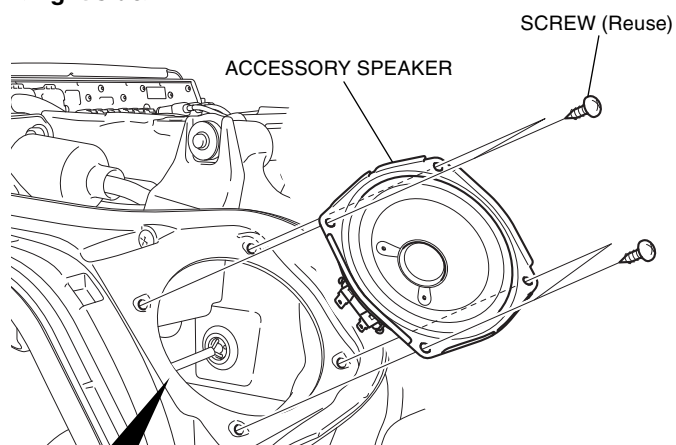


92. Install the 5 mm screw as shown.

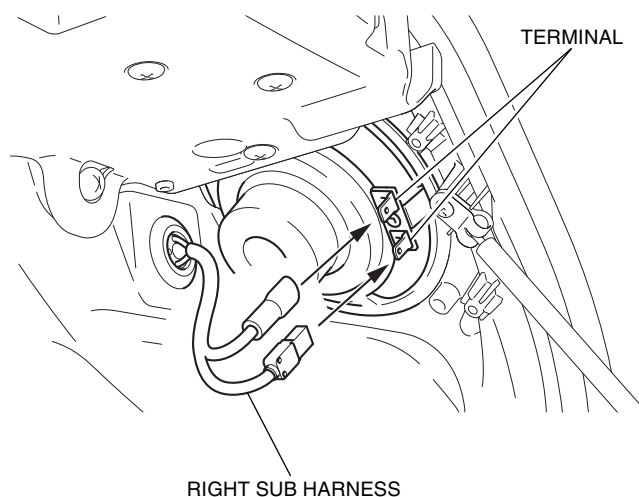


93. Install the accessory speaker as shown.

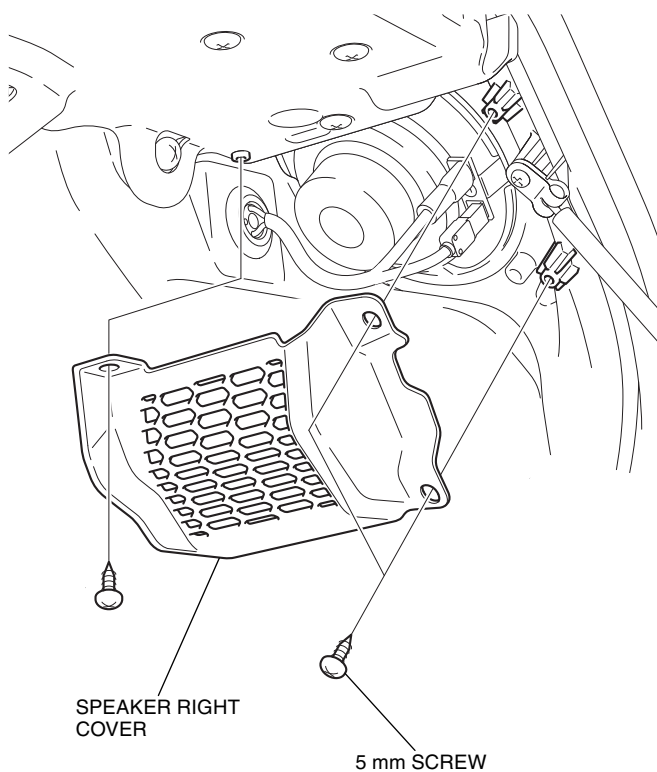
<Right side>



94. Connect the right sub harness as shown.



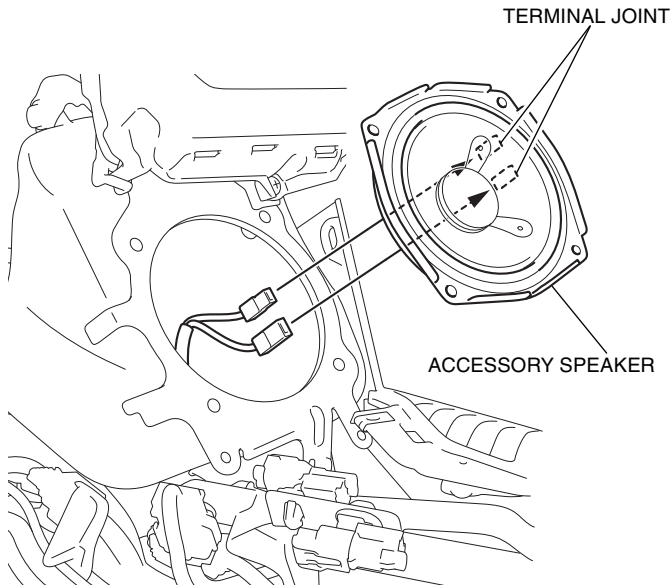
95. Install the speaker right cover as shown.



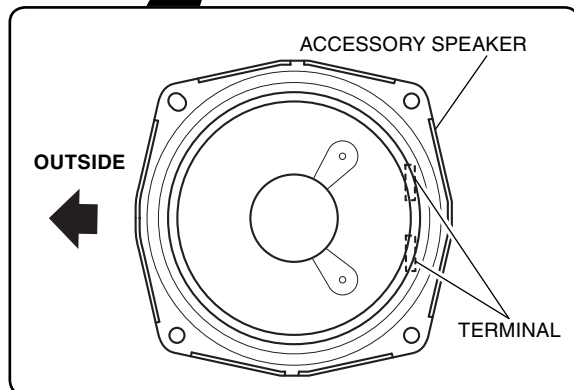
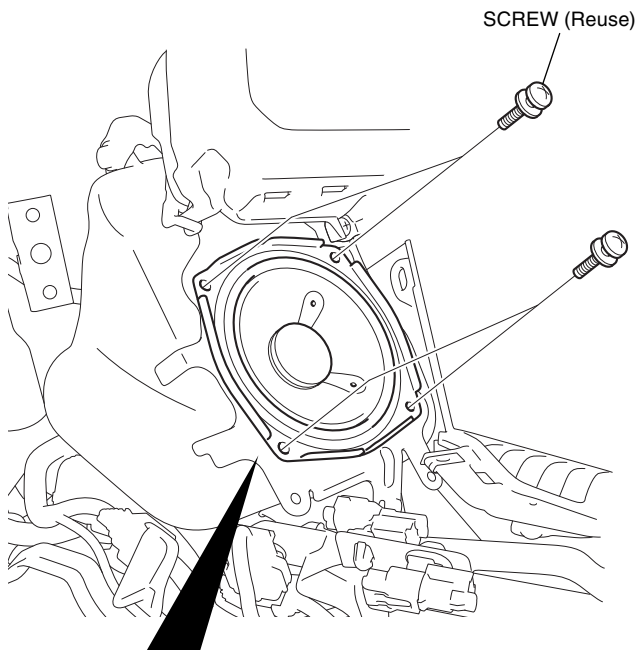
96. Install the left side accessory speaker and speaker left cover in the same manner as the right side.

97. Connect the accessory speaker as shown.

<Left side>



98. Install the accessory speaker as shown.



99. Install the right side accessory speaker in the same manner as the left side.

100. Install the motorcycle's parts in the reverse order of removal.

- Confirm that any wire harness is not caught or too tight.

101. Check the power amplifier, speaker, headlight and the other lights for proper operation.