



# INSTALLATION INSTRUCTIONS

Accessory

**POWER AMPLIFIER KIT**  
P/N 08A70-MKC-L00

Application

**GL1800B/BD**  
**GL1800D/DA (go to page 13)**

Publication No.

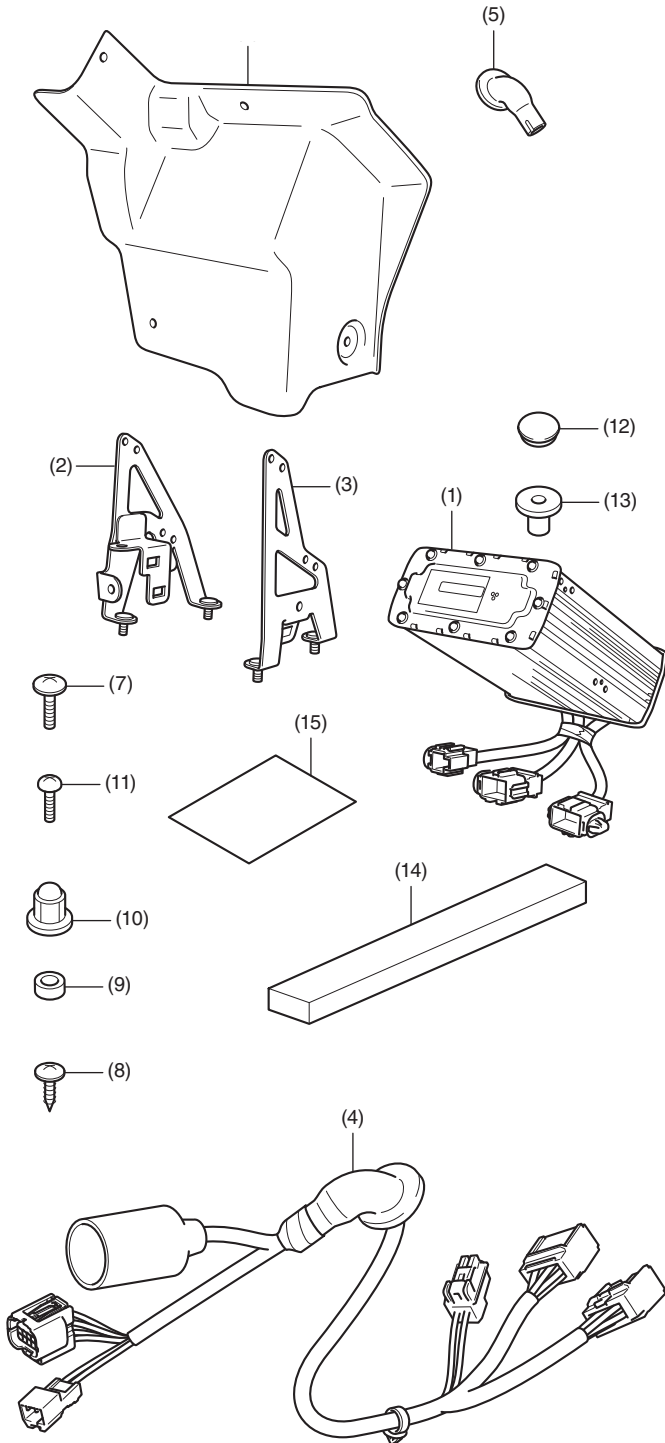
**MII 17686**

Issue Date

**February 2021**

**Honda Dealer: Please give a copy of these instructions to your customer.**

## PARTS LIST



No.	Description	Qty
(1)	Amplifier unit	1
(2)	Stay A	1
(3)	Stay B	1
(4)	Sub harness	1
(5)	Grommet	3
(6)	Cover	1
(7)	5 mm screw (long)	4
(8)	5 mm screw (short)	2
(9)	Collar	9
(10)	5 mm nut	5
(11)	4 mm screw	9
(12)	Hole plug	1
(13)	Well nut	1
(14)	Sponge seal rubber	1
(15)	Installation Instructions URL	1

## TOOLS AND SUPPLIES REQUIRED

- Box-end wrench (8 mm)
- Open-end wrench (8 mm)
- Phillips screwdriver
- Synthetic detergent solution  
(Water : Mild soap / 100 : 1)
- Snips
- Electric drill
- Drill bit (4 mm, 6 mm and 10 mm)
- Hole saw (30 mm)
- Scale
- Scissors
- File
- Isopropyl alcohol
- Shop towel
- Torque wrench

## TORQUE CHART

Tighten all screws, bolts, and nuts to their specified torque values. Refer to the Service Manual for the torque values of the removed parts.

Item	N-m	kgf-m	lbf-ft
4 mm screw	1	0.1	0.7
5 mm screw	4.2	0.4	3.1
5 mm nut	5.2	0.5	3.8

## INSTALLATION

### ⚠ CAUTION

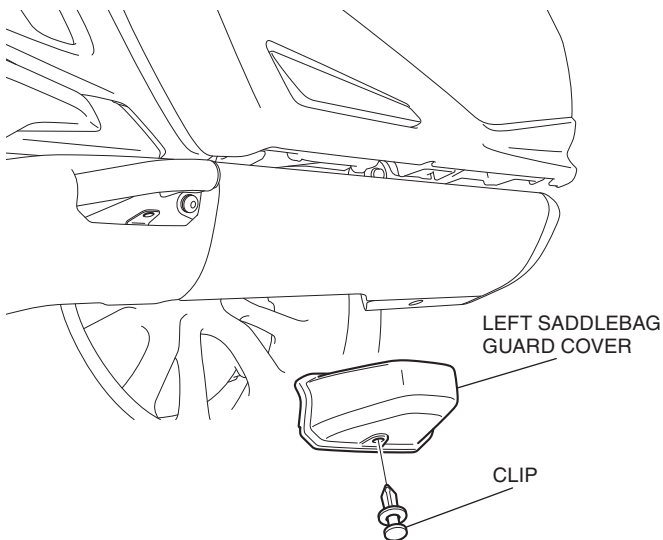
- To prevent burns, allow the engine, exhaust system, radiator, etc., to cool before installing the accessory.

### NOTE:

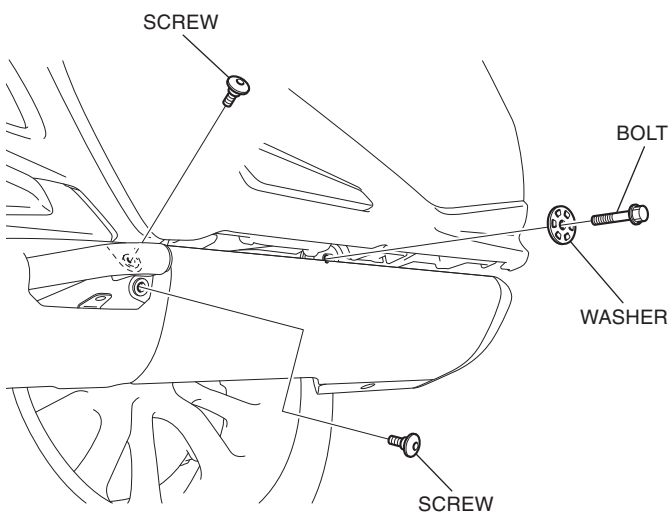
- Disconnect the negative (-) cable from the battery before installing this accessory.
- Heat the bonding surfaces with a hair dryer if the ambient air temperature is below 70°F (21°C).
- The adhesive reaches full strength in 72 hours. Wait at least 24 hours before riding your motorcycle.
- The clock memory will be erased when you disconnect the battery. Reset the clock after reconnecting the battery.
- Reinstall the removed parts on the motorcycle and make sure that the wires and harnesses are not pinched.

1. Remove the left saddlebag guard cover as shown.

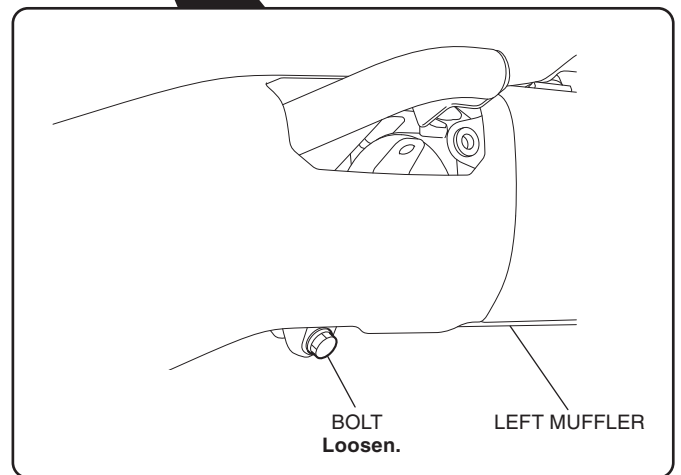
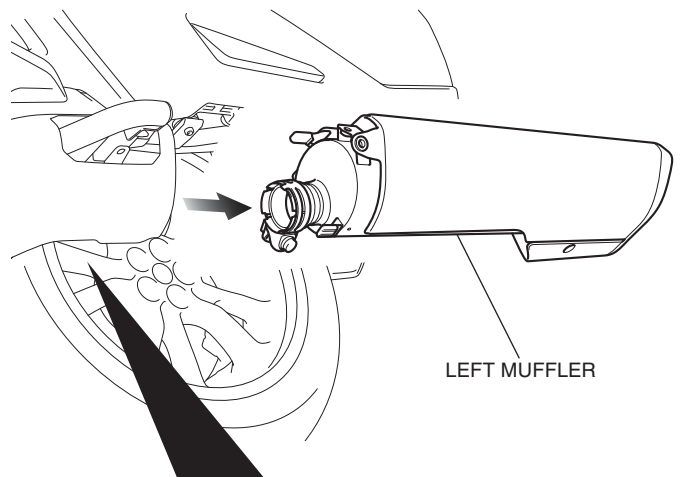
<Left side>



2. Remove the parts as shown.

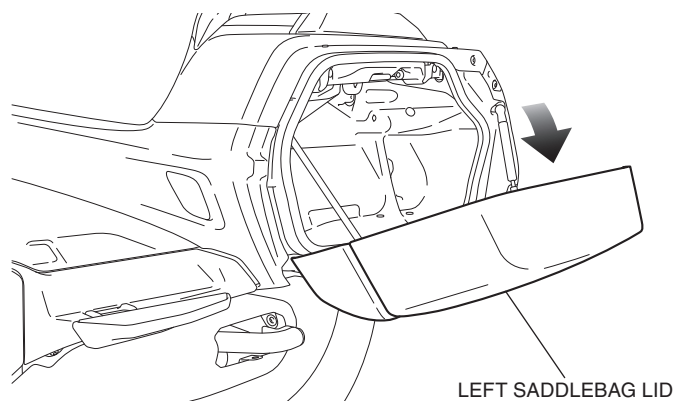


3. Loosen the bolt, then remove the left muffler as shown.

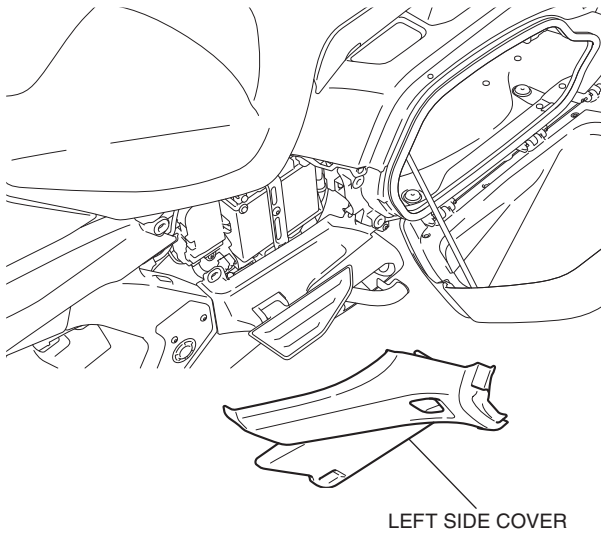


4. Open the left saddlebag lid as shown.

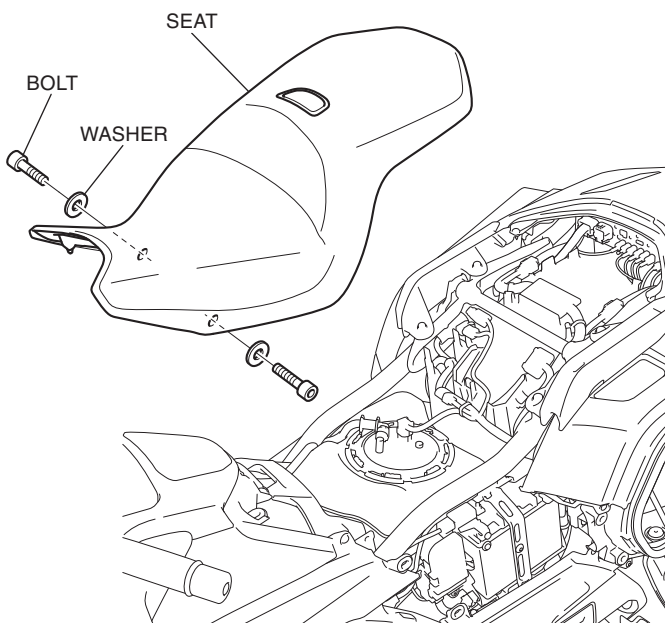
<Left side>



5. Remove the left side cover as shown, and disconnect the negative (-) cable of the battery.

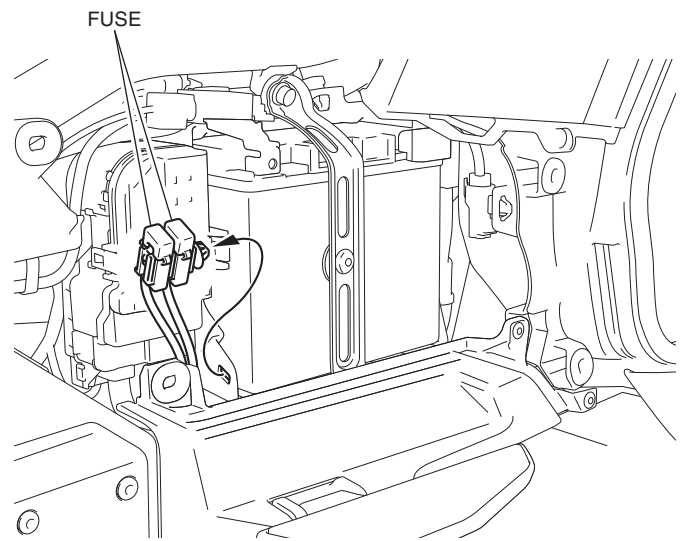


6. Remove the right side cover in the same manner as the left side.  
7. Remove the seat as shown.

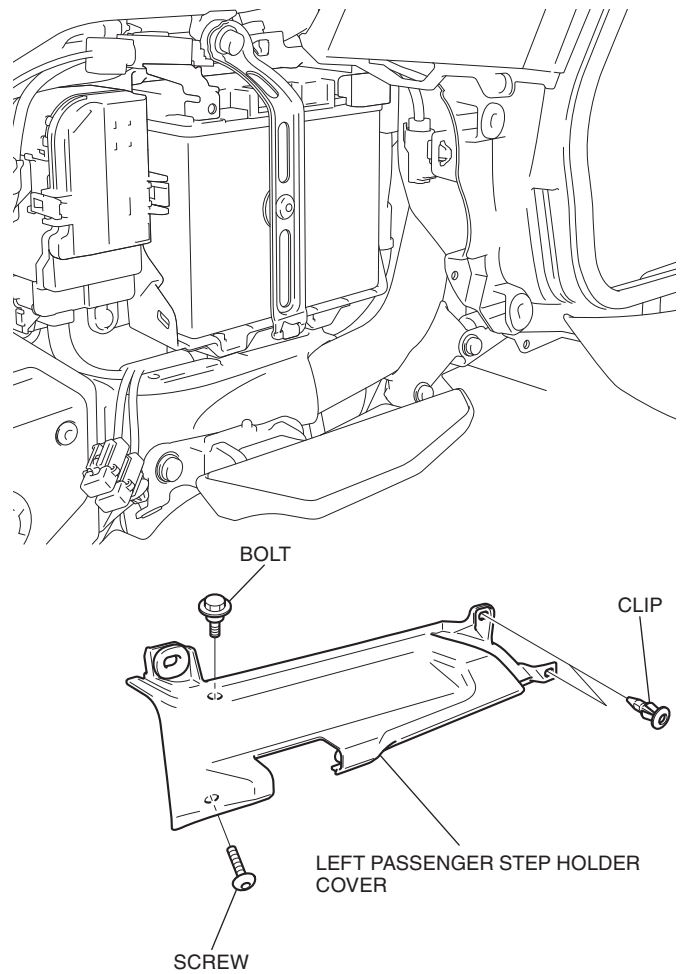


8. Remove the fuses as shown.

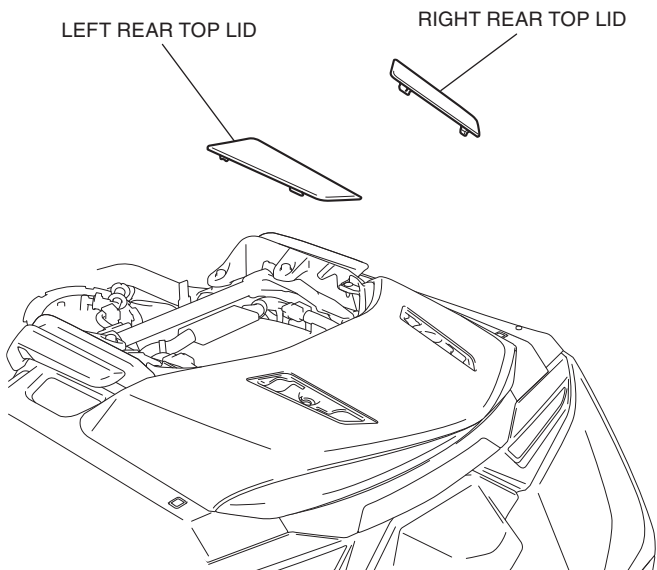
<Left side>



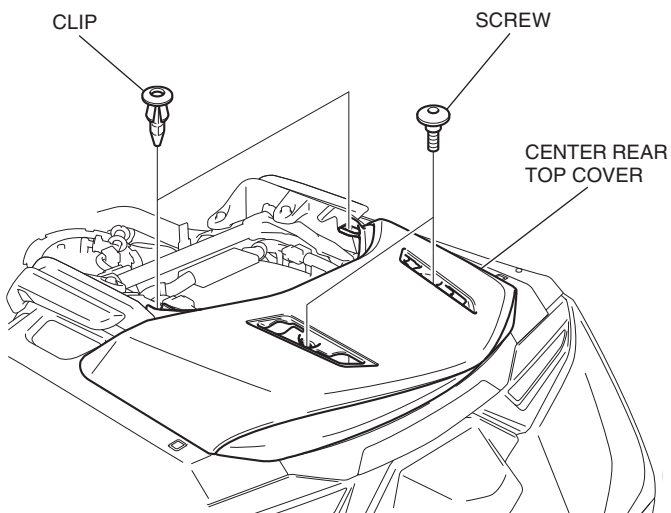
9. Remove the left passenger step holder cover as shown.



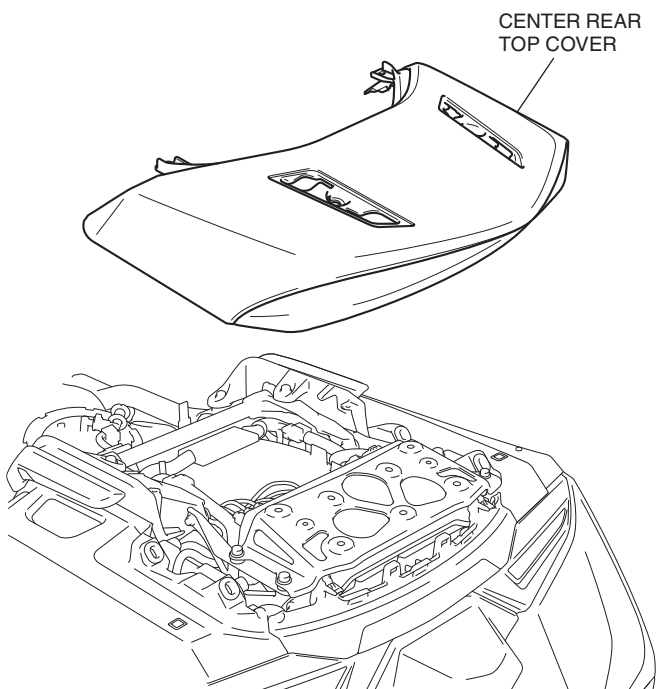
10. Remove the left and right rear top lid as shown.



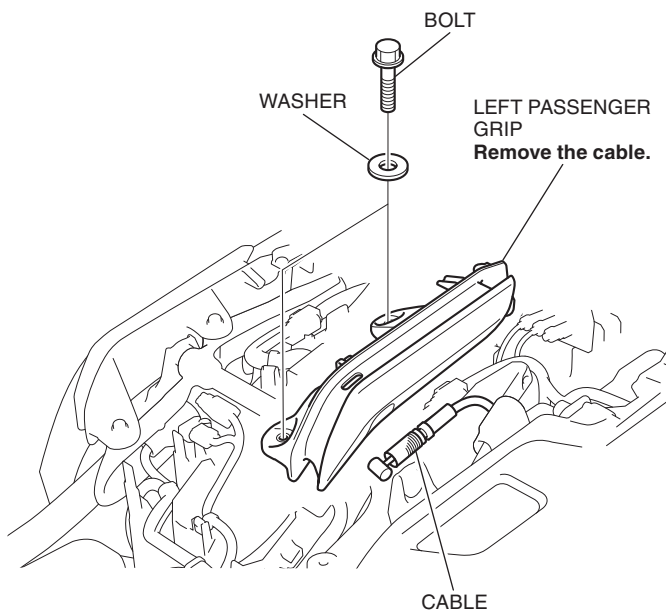
11. Remove the parts as shown.



12. Remove the center rear top cover as shown.

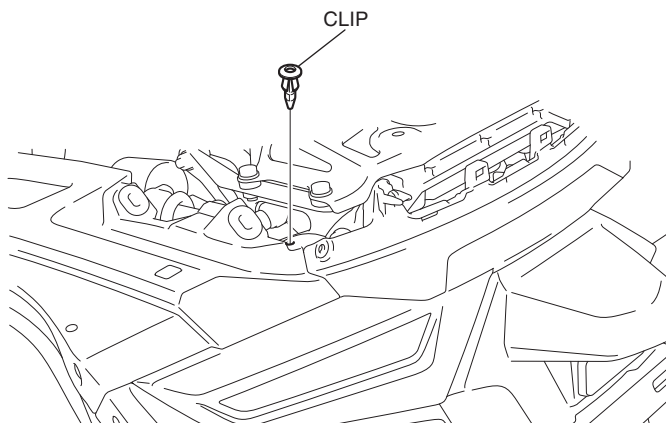


13. Remove the left passenger grip as shown.

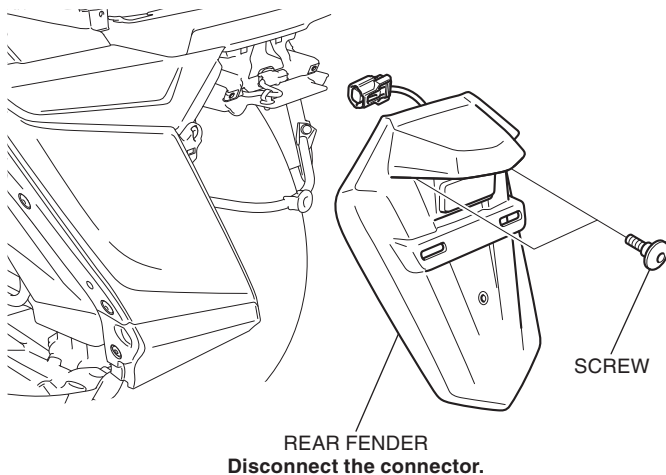


14. Remove the clips as shown.

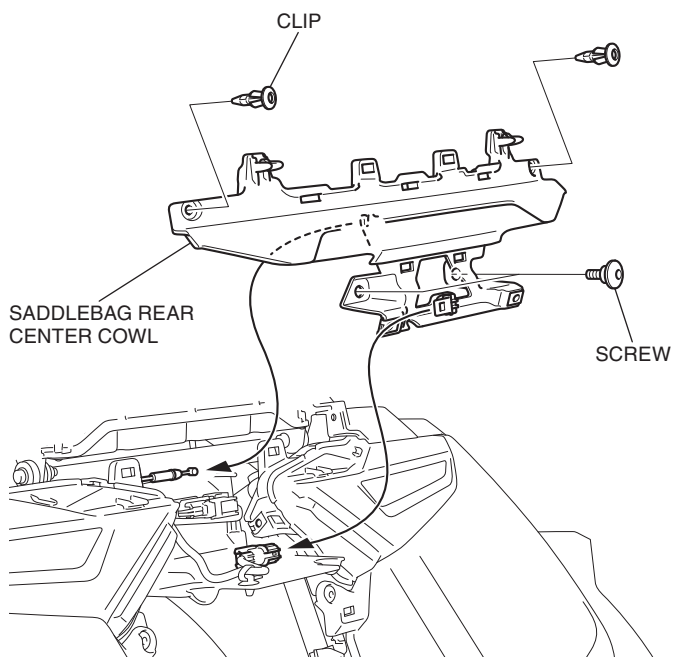
<Left side>



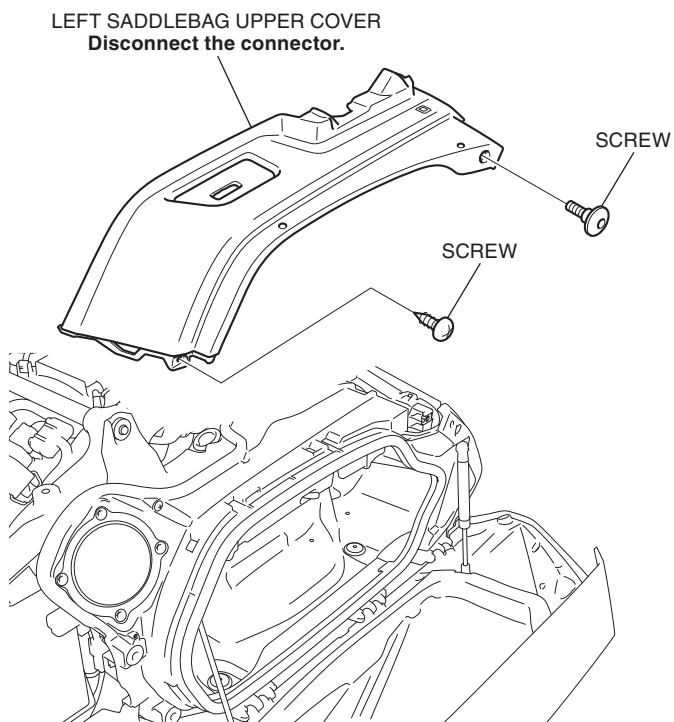
15. Remove the rear fender as shown.



16. Remove the saddlebag rear center cowl as shown.

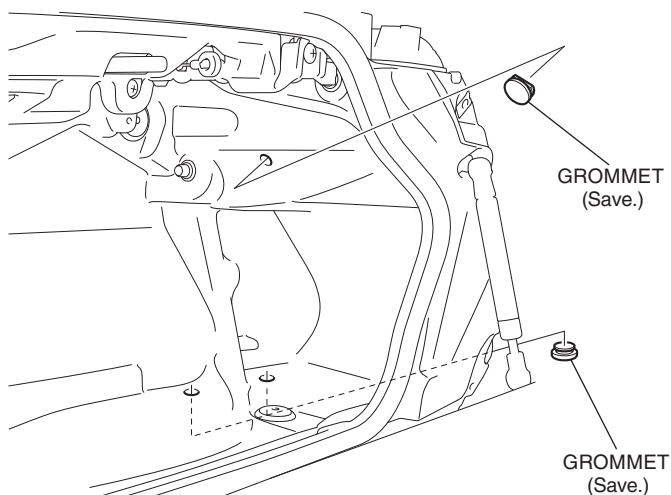


17. Remove the left saddlebag upper cover as shown.  
<Left side>

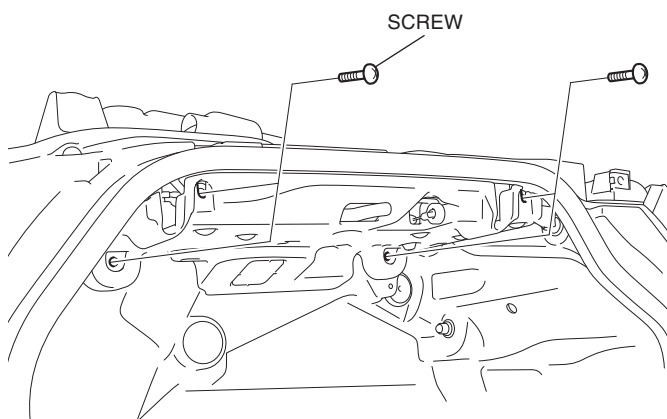


18. Remove the grommets as shown.

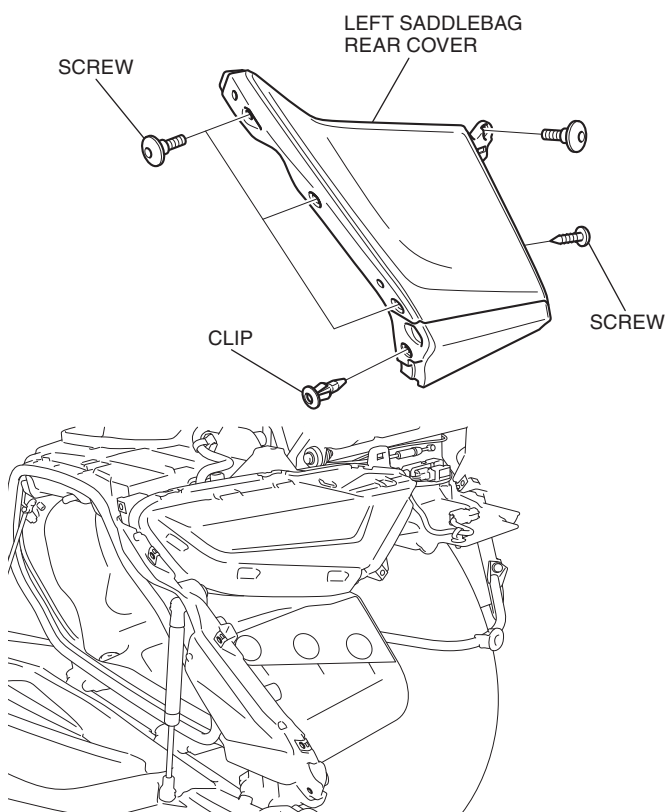
<Left side>



19. Remove the screws as shown.

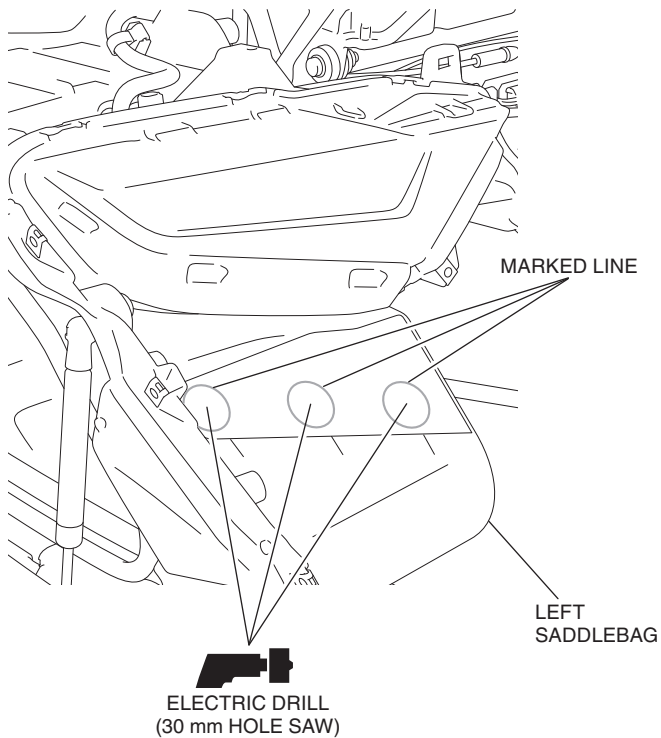


20. Remove the left saddlebag rear cover as shown.



21. Drill at the marked lines of the left saddlebag as shown.

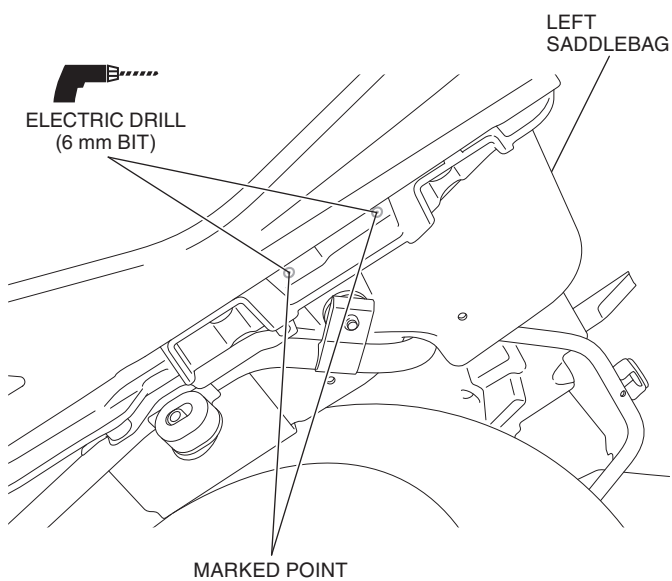
- Drill holes at the center of the marked lines.
- Remove any burrs from the edge of the hole.



22. Drill at the marked points of the left saddlebag as shown.

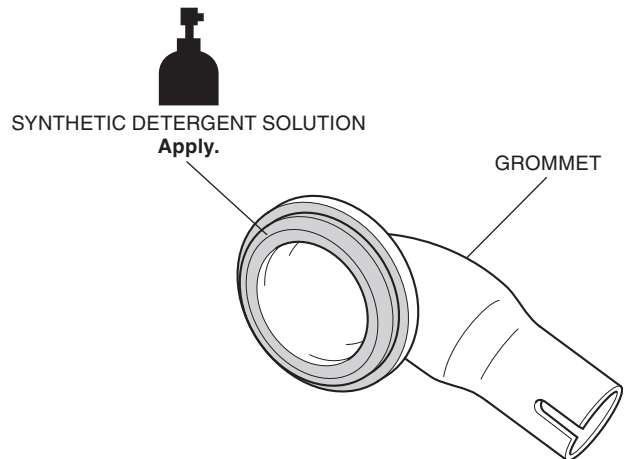
- Remove any burrs from the edge of the hole.

<Under side>

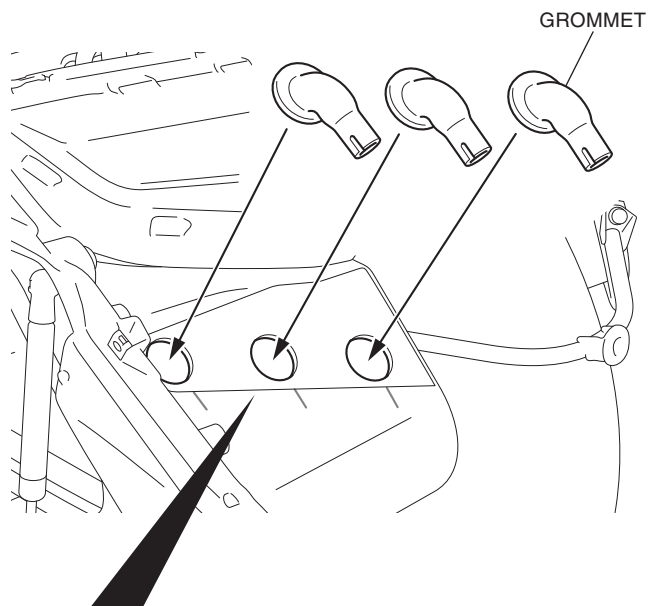


23. Apply synthetic detergent solution to the position shown.

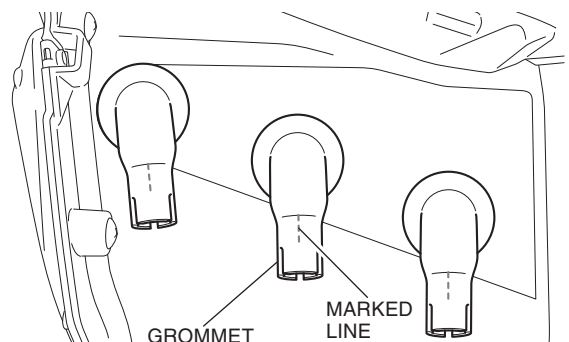
- Perform this step for all three grommets.



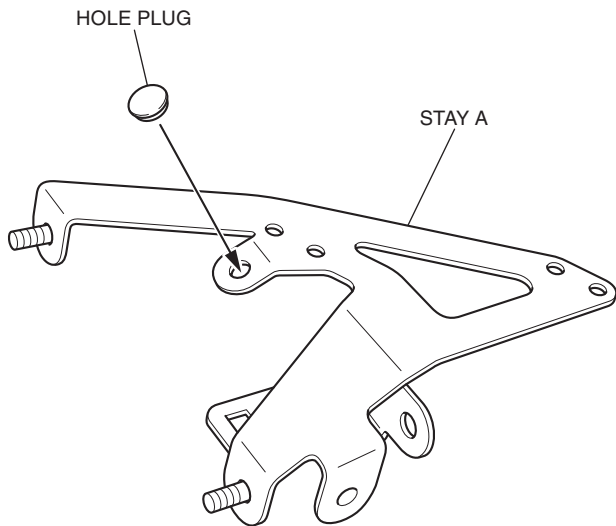
24. Install the grommets as shown.



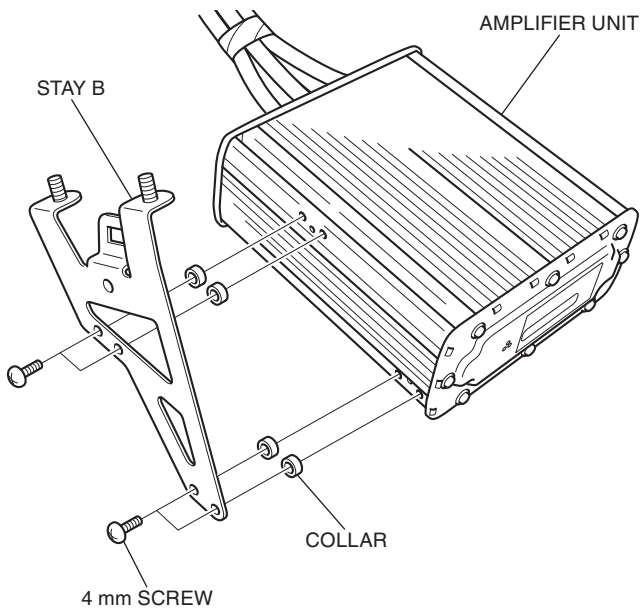
Align the end of grommet with the marked line as shown.



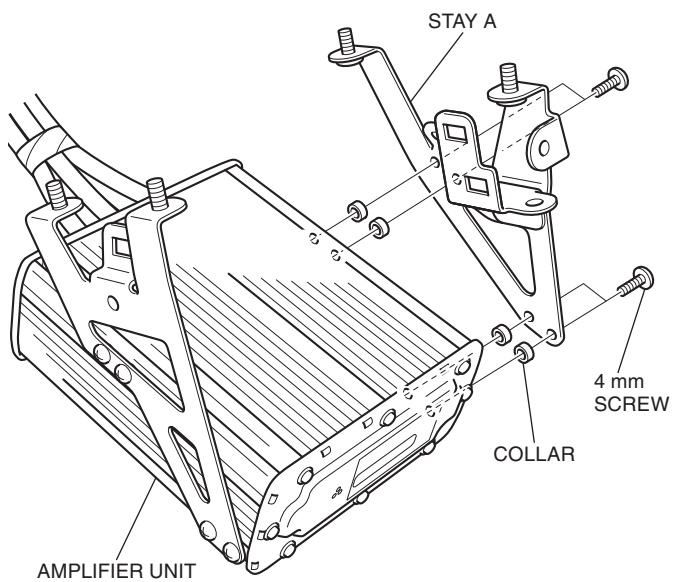
25. Install the hole plug as shown.



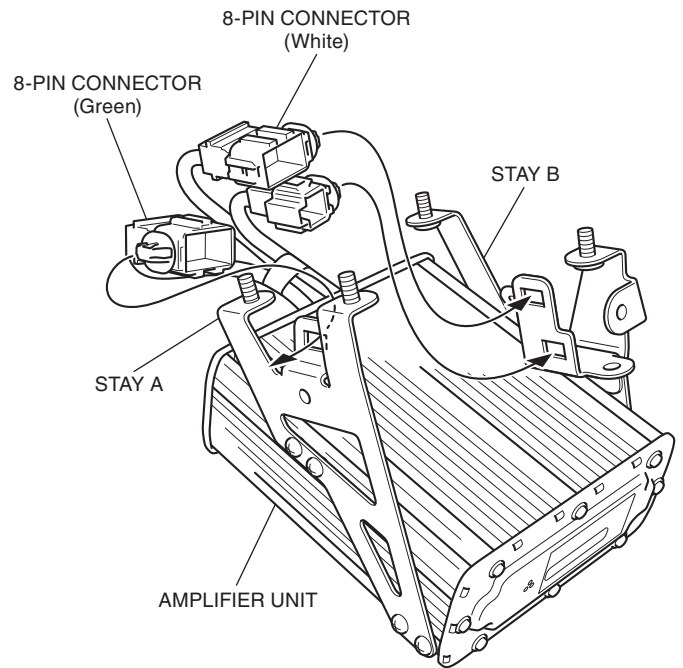
26. Install the stay B as shown.



27. Install the stay A as shown.

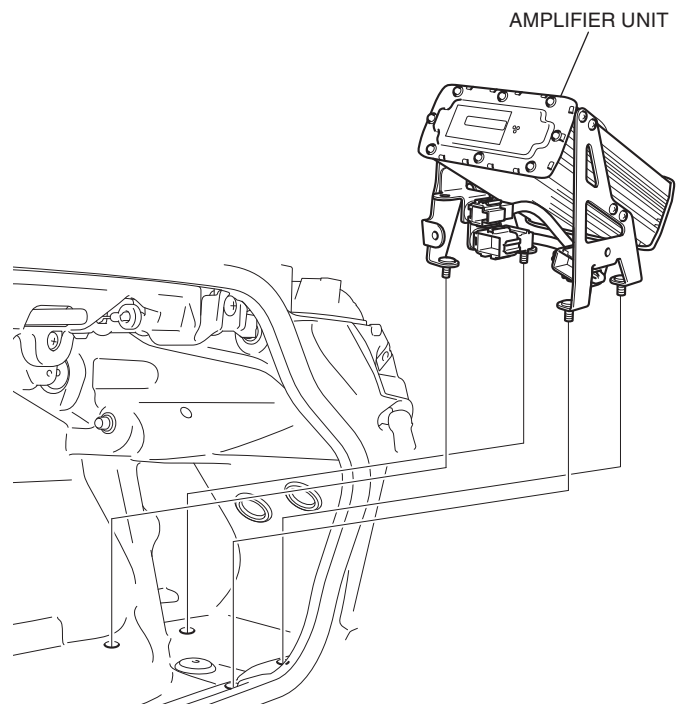


28. Secure the connectors as shown.



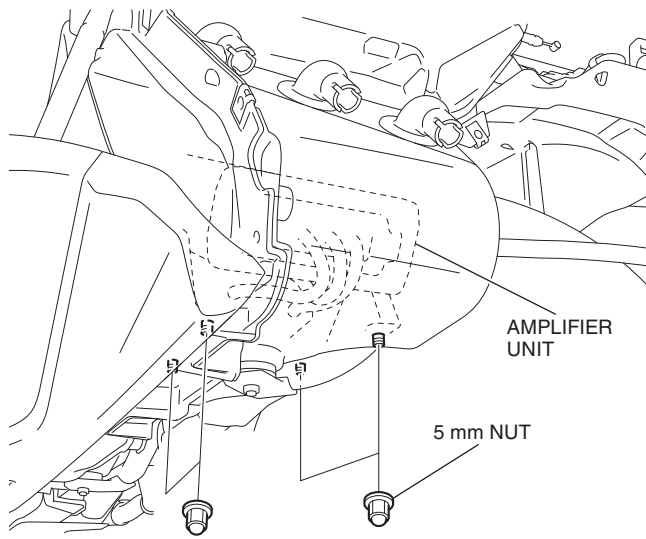
29. Install the amplifier unit as shown.

<Left side>



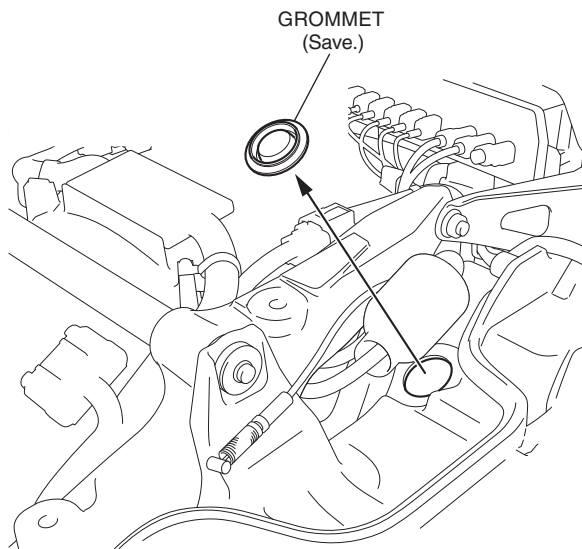
30. Install the 5 mm nuts as shown.

<Left side>

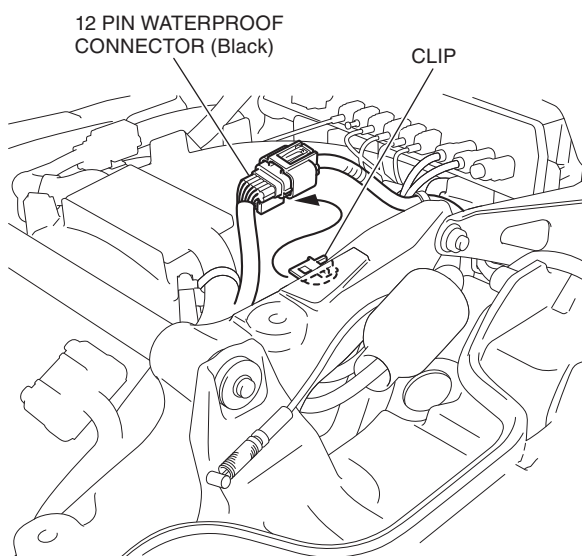


31. Remove the grommet as shown.

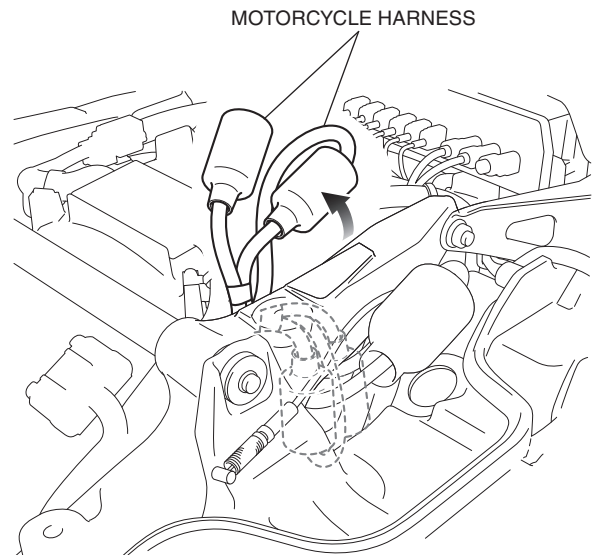
<Left side>



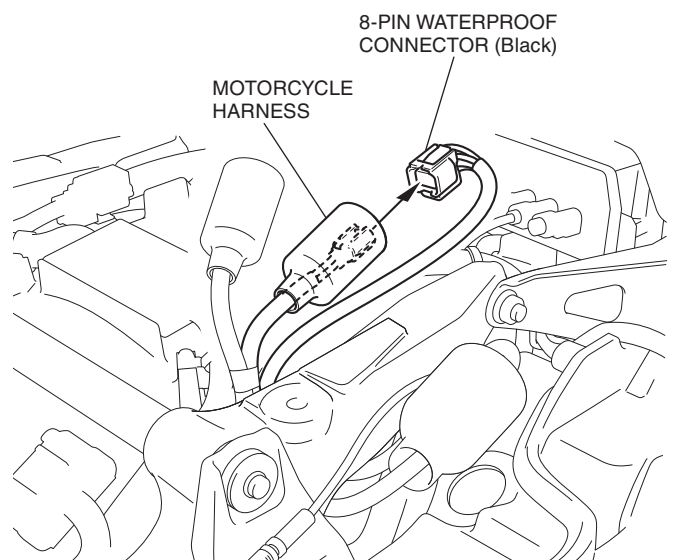
32. Remove the connector as shown.



33. Move the motorcycle harnesses as shown.

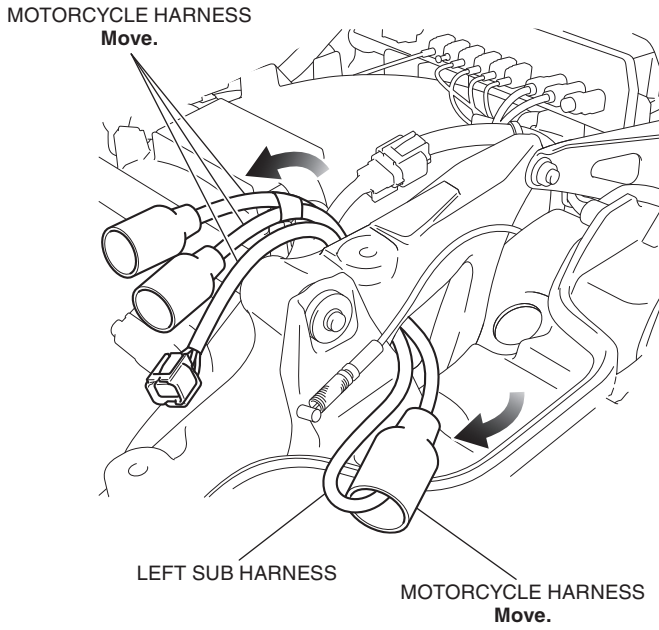


34. Disconnect the connector as shown.

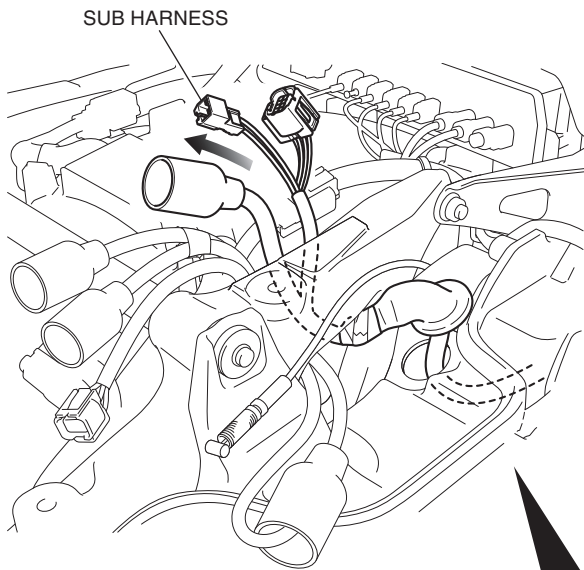




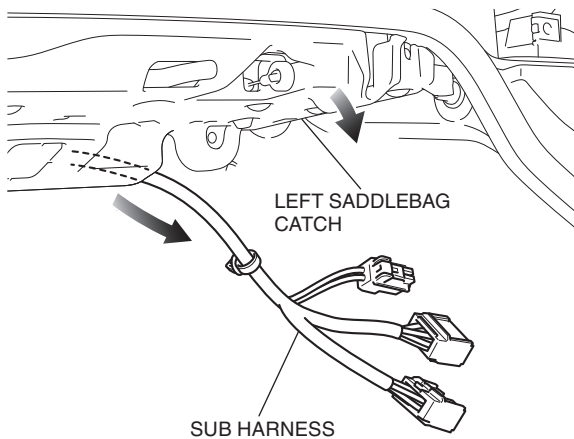
35. Move the motorcycle harnesses as shown.



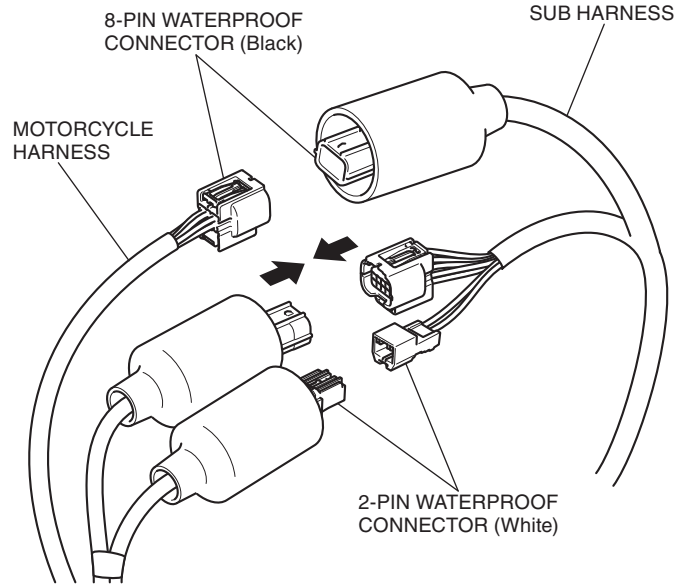
36. Route the sub harness as shown.



Move the left saddlebag catch and route the sub harness as shown.

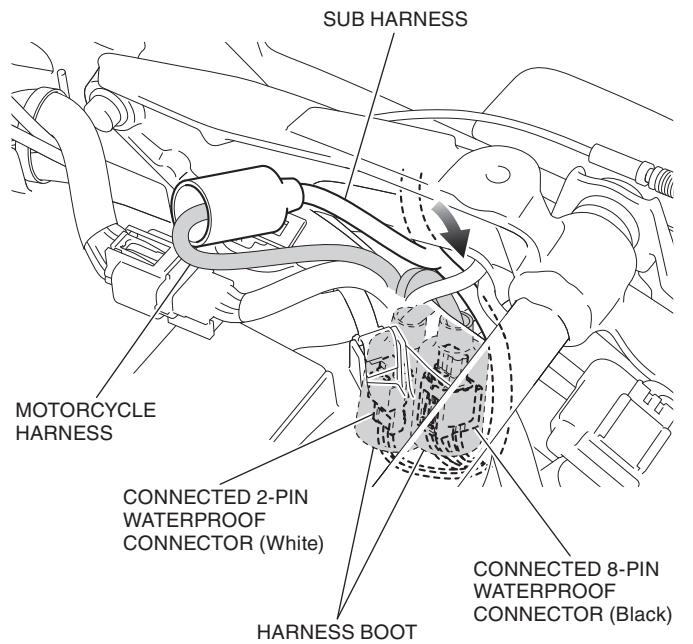


37. Connect the sub harness as shown.

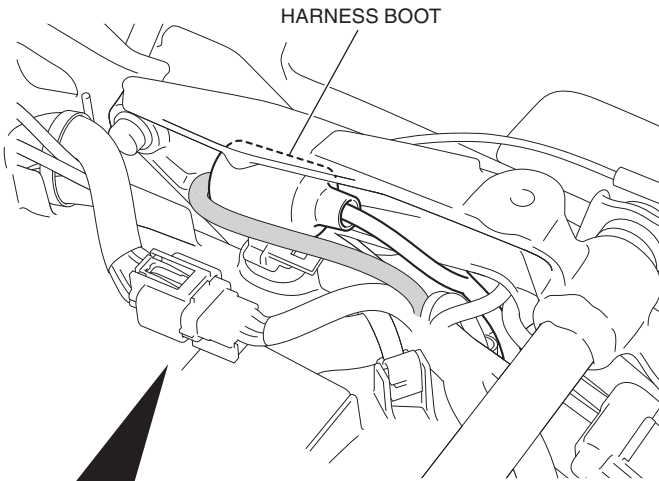


38. Store the harness boots as shown.

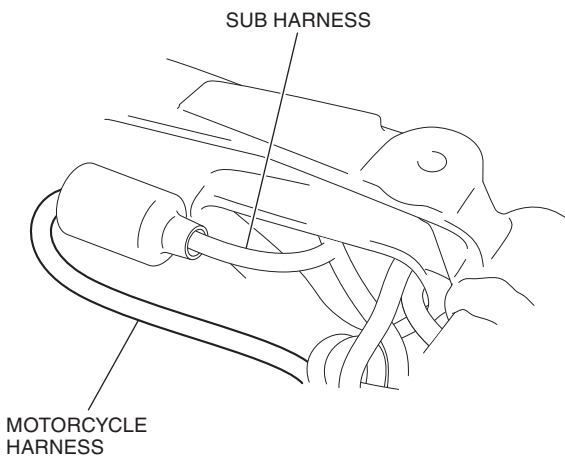
<Left side>



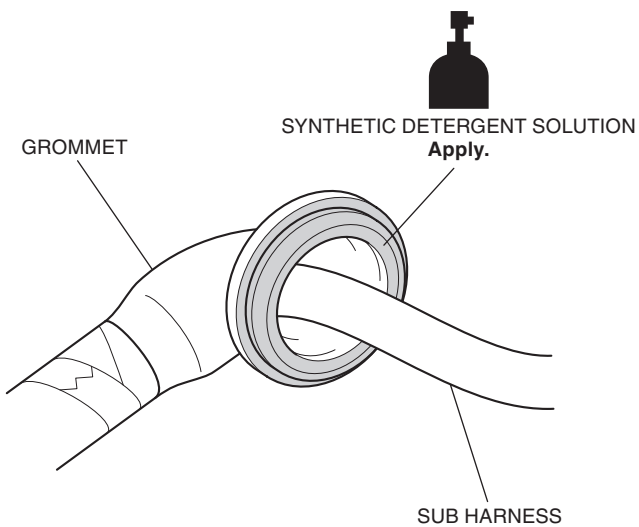
39. Store the boot as shown.



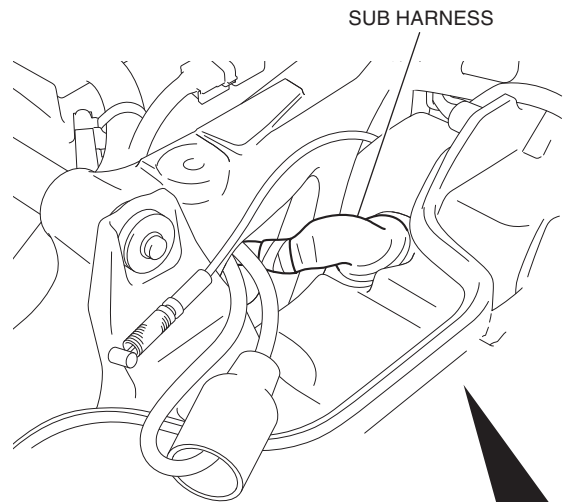
**Fold back the motorcycle harness as shown**



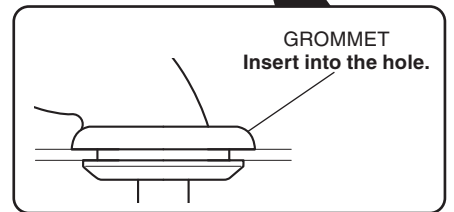
40. Apply synthetic detergent solution to the position shown.



41. Install the sub harness as shown.

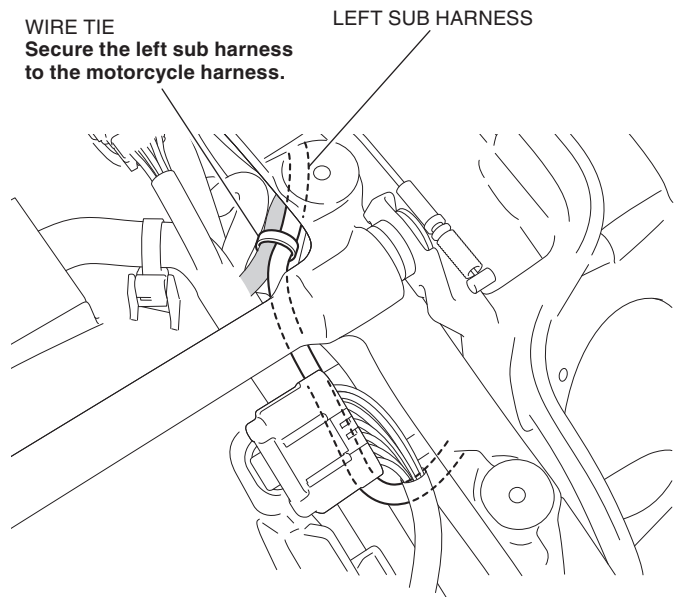


**GROMMET  
Insert into the hole.**



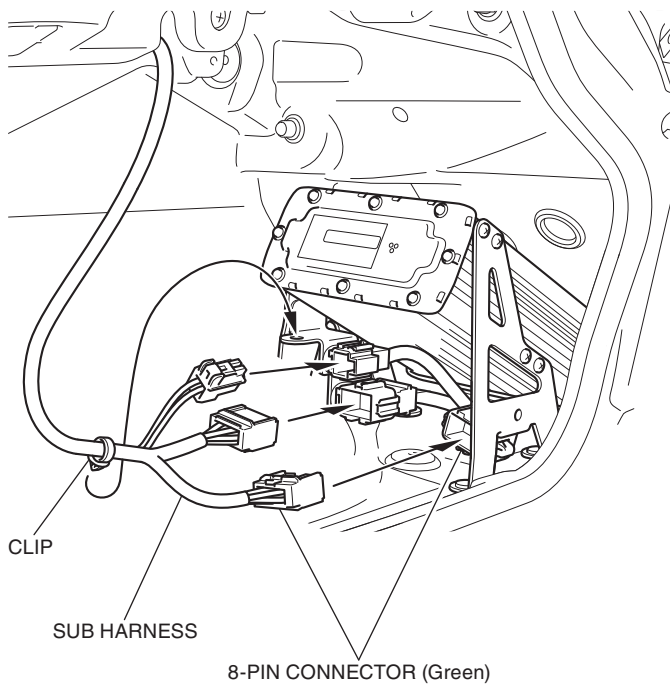
42. Secure the left sub harness with the wire tie as shown.

**WIRE TIE  
Secure the left sub harness  
to the motorcycle harness.**

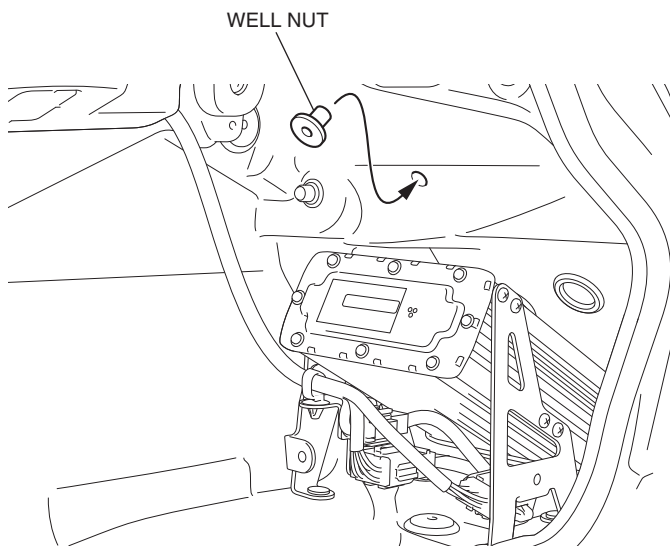


43. Install the left saddlebag catch in the reverse order of removal.

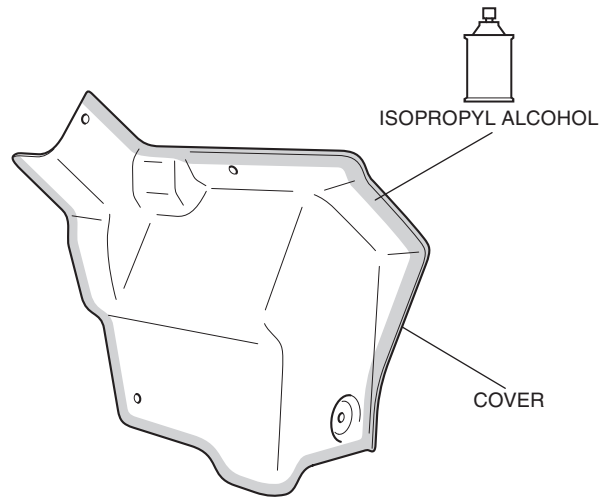
44. Connect the sub harness and install the clip as shown.



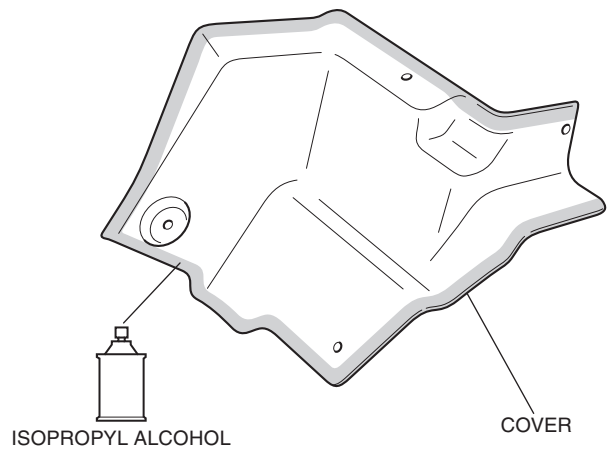
45. Install the well nut as shown.



46. Clean the surface of the area shown using isopropyl alcohol.

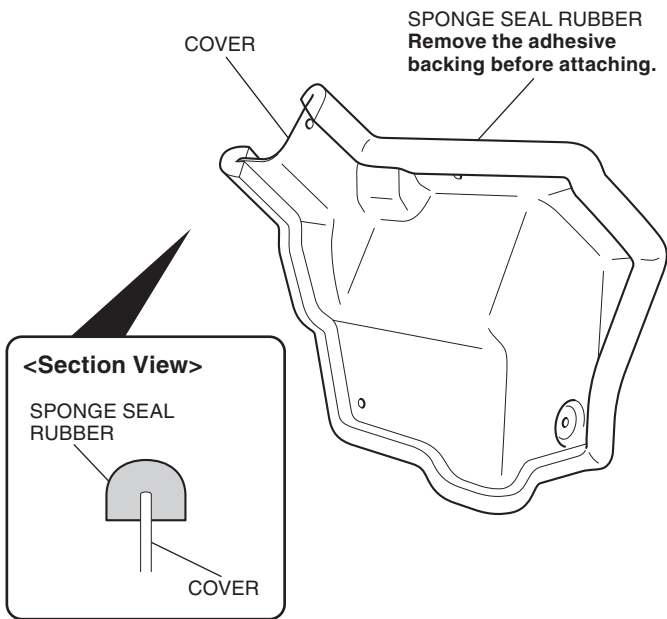


<Backside>



47. Attach the sponge seal rubber as shown.

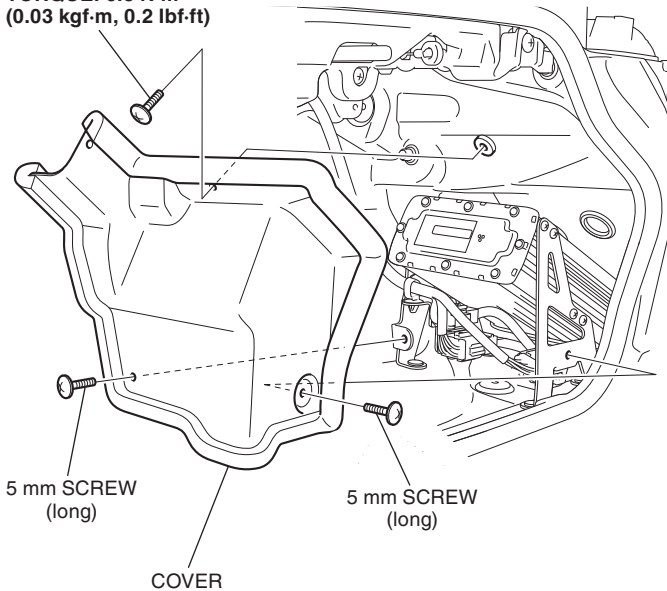
- **Trim the excess end off the sponge seal rubber.**



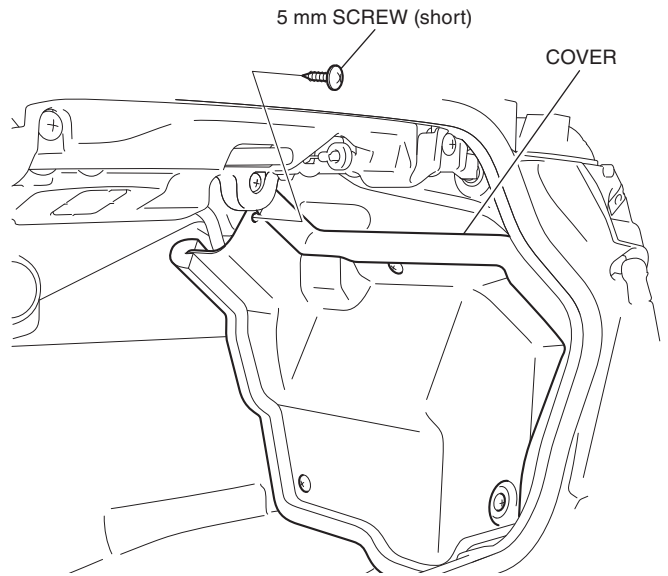
48. Install the cover as shown.

- **Make sure that the wire harness is not caught or too tight.**

5 mm SCREW (long)  
TORQUE: 0.3 N·m  
(0.03 kgf·m, 0.2 lbf·ft)



49. Install the 5 mm screw as shown.



50. Install the motorcycle's parts in the reverse order of removal.

- **Make sure that the wire harness is not caught or too tight.**

51. Check the power amplifier, speaker, headlight and the other lights for proper operation.



# INSTALLATION INSTRUCTIONS

Accessory

POWER AMPLIFIER KIT  
P/N 08A70-MKC-L00

Application

GL1800/D/DA

Publication No.

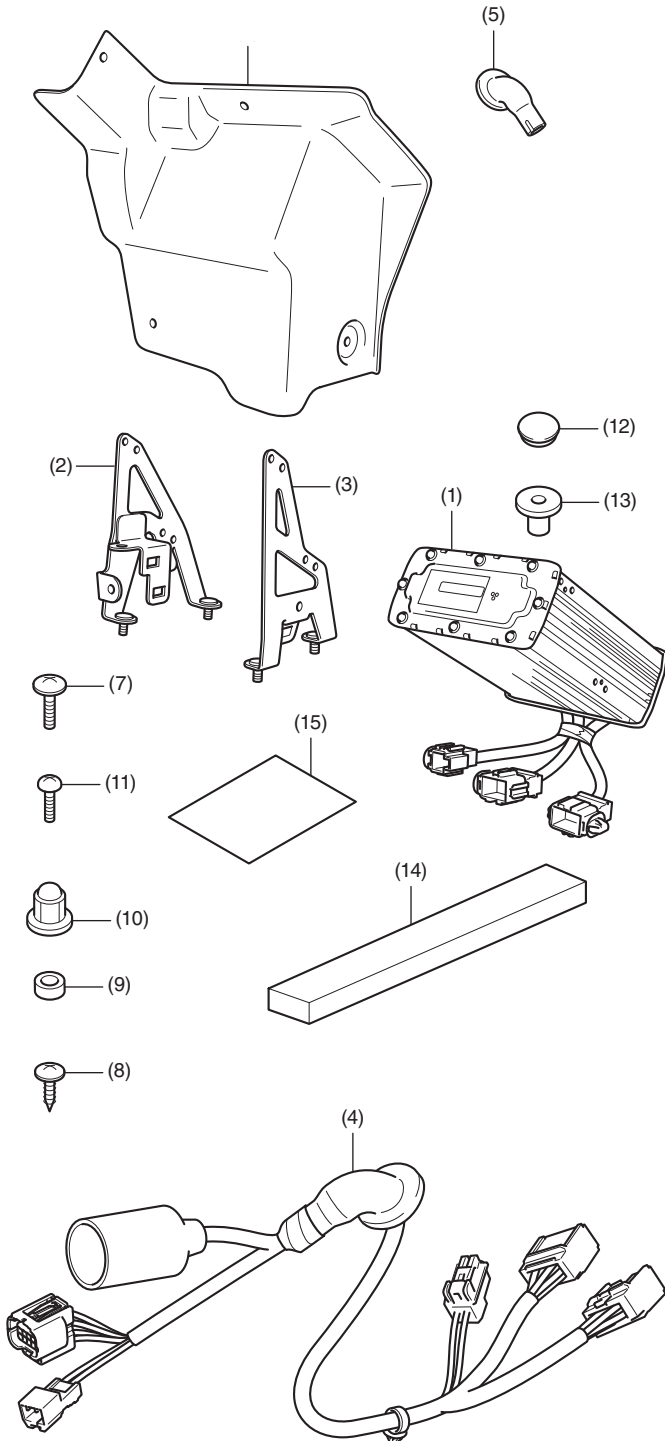
MII 17686

Issue Date

February 2021

**Honda Dealer: Please give a copy of these instructions to your customer.**

## PARTS LIST



No.	Description	Qty
(1)	Amplifier unit	1
(2)	Stay A	1
(3)	Stay B	1
(4)	Sub harness	1
(5)	Grommet	3
(6)	Cover	1
(7)	5 mm screw (long)	4
(8)	5 mm screw (short)	2
(9)	Collar	9
(10)	5 mm nut	5
(11)	4 mm screw	9
(12)	Hole plug	1
(13)	Well nut	1
(14)	Sponge seal rubber	1
(15)	Installation Instructions URL	1

## TOOLS AND SUPPLIES REQUIRED

Box-end wrench (8 mm)  
 Open-end wrench (8 mm)  
 Phillips screwdriver  
 Synthetic detergent solution  
 (Water : Mild soap / 100 : 1)  
 Electric drill  
 Drill bit (6 mm)  
 Hole saw (30 mm)  
 Scissors  
 Isopropyl alcohol  
 Shop towel  
 Torque wrench

## TORQUE CHART

Tighten all screws, bolts, and nuts to their specified torque values. Refer to the Service Manual for the torque values of the removed parts.

Item	N·m	kgf·m	lbf·ft
4 mm screw	1	0.1	0.7
5 mm screw	4.2	0.4	3.1
5 mm nut	5.2	0.5	3.8

## INSTALLATION

### ⚠ CAUTION

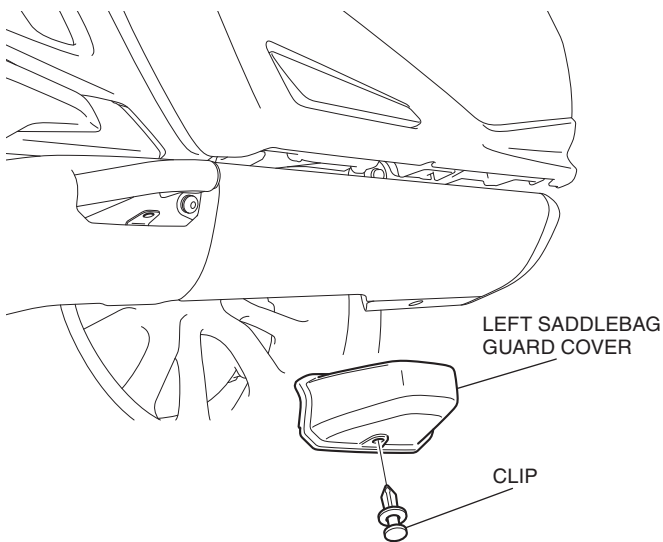
- To prevent burns, allow the engine, exhaust system, radiator, etc., to cool before installing the accessory.

### NOTE:

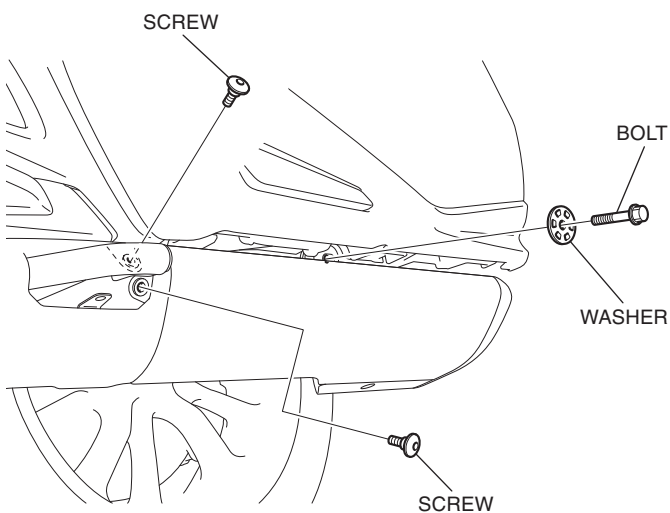
- Disconnect the negative (-) cable from the battery before installing this accessory.
- Heat the bonding surfaces with a hair dryer if the ambient air temperature is below 70°F (21°C).
- The adhesive reaches full strength in 72 hours. Wait at least 24 hours before riding your motorcycle.
- The clock memory will be erased when you disconnect the battery. Reset the clock after reconnecting the battery.
- Reinstall the removed parts on the motorcycle and make sure that the wires and harnesses are not pinched.

1. Remove the left saddlebag guard cover as shown.

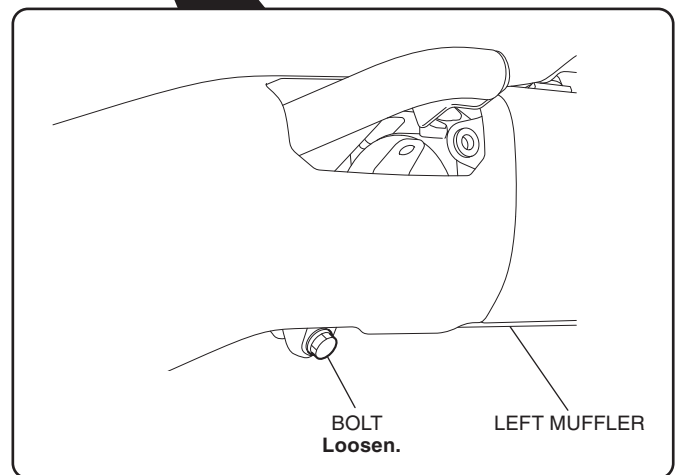
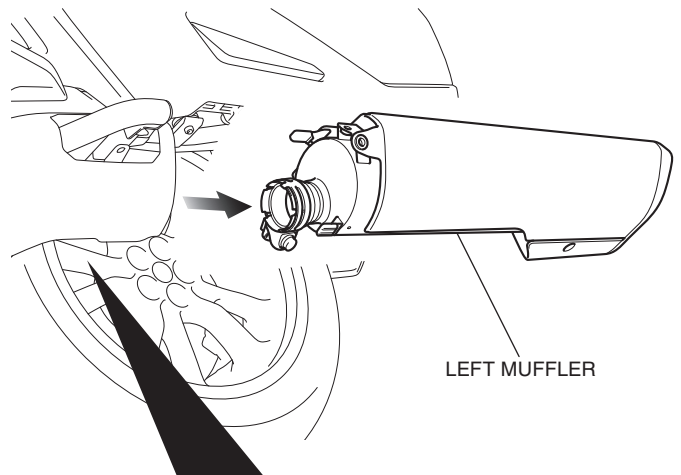
<Left side>



2. Remove the parts as shown.



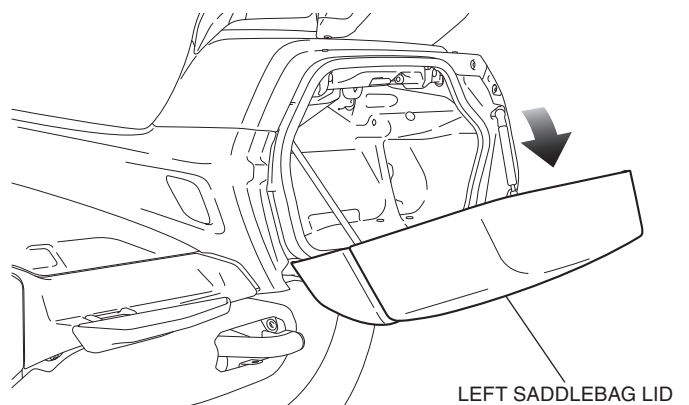
3. Loosen the bolt, then remove the left muffler as shown.



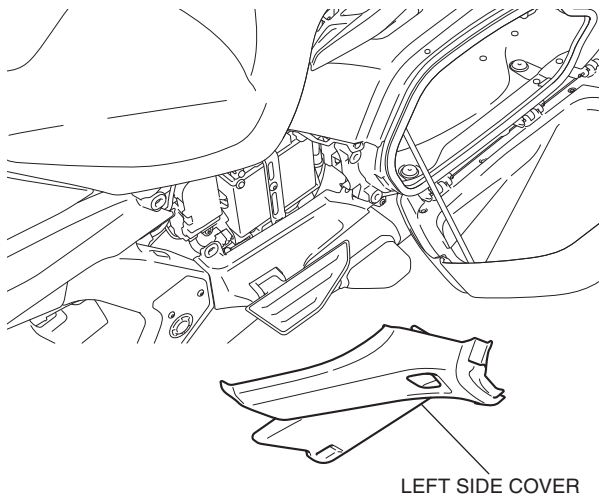
4. Open the left saddlebag lid as shown.

- Repeat on the right side.

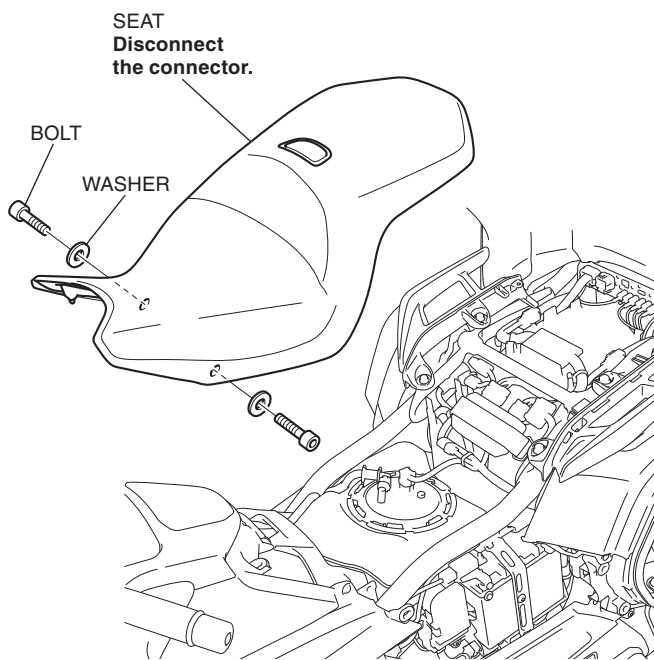
<Left side>



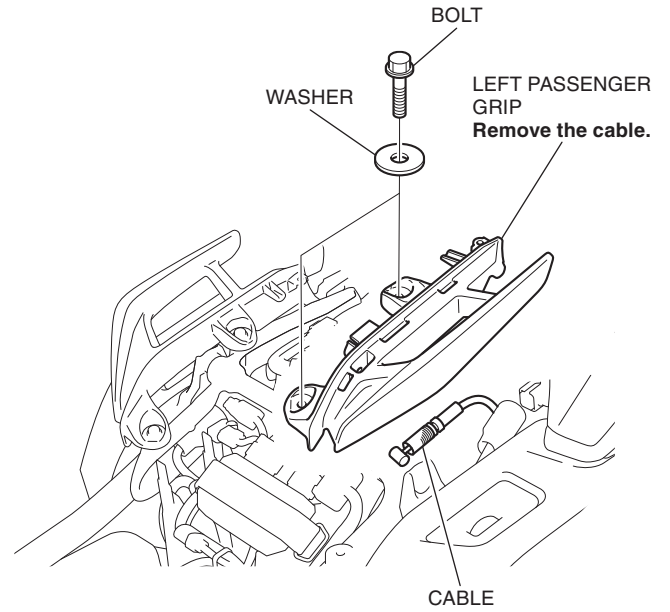
5. Remove the left side cover as shown, and disconnect the negative (-) cable of the battery.



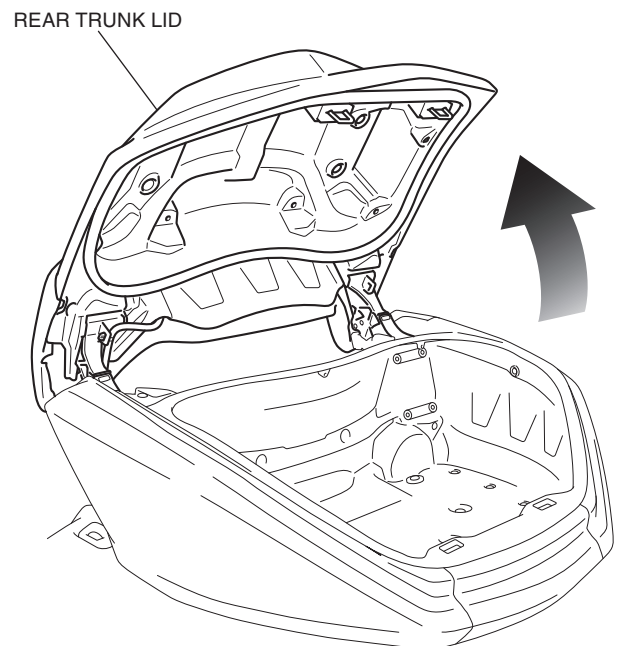
6. Remove the right side cover in the same manner as the left side.  
7. Remove the seat as shown.



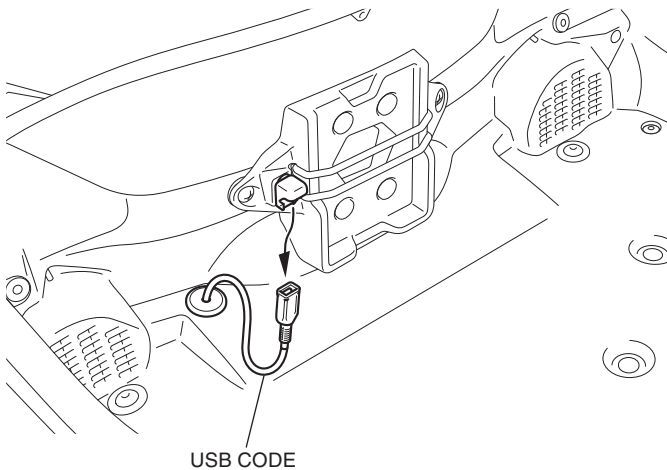
8. Remove the left passenger grip as shown.



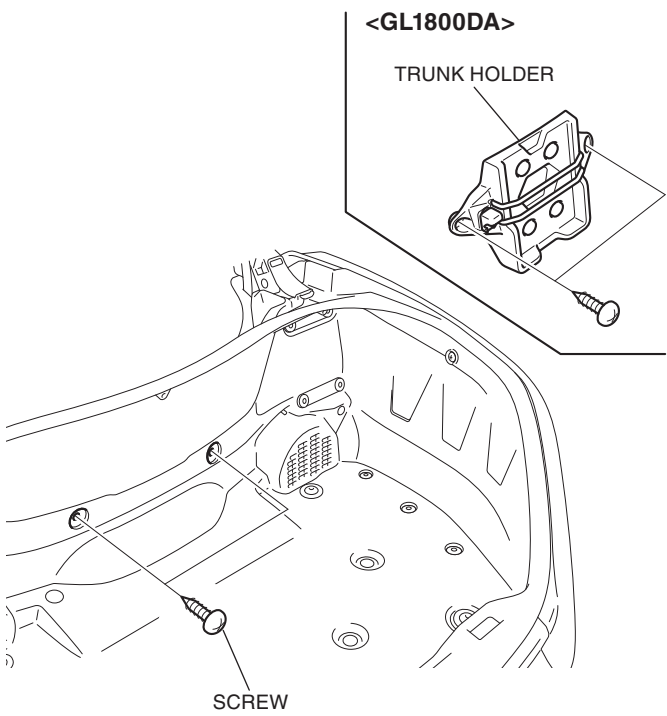
9. Open the rear trunk lid as shown.  
• Refer to the Owner's Manual if using the emergency trunk cable to open the rear trunk lid.



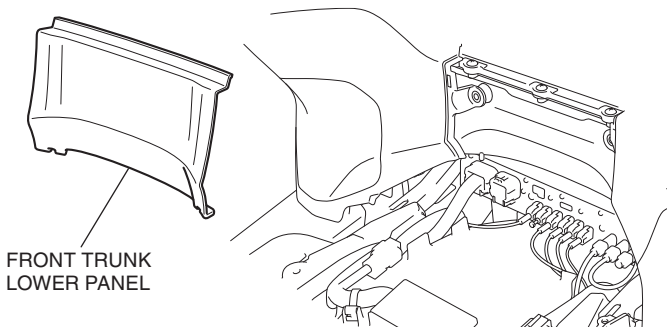
10. Remove the USB code as shown.
- Perform this step on GL1800DA only.



11. Remove the parts as shown.

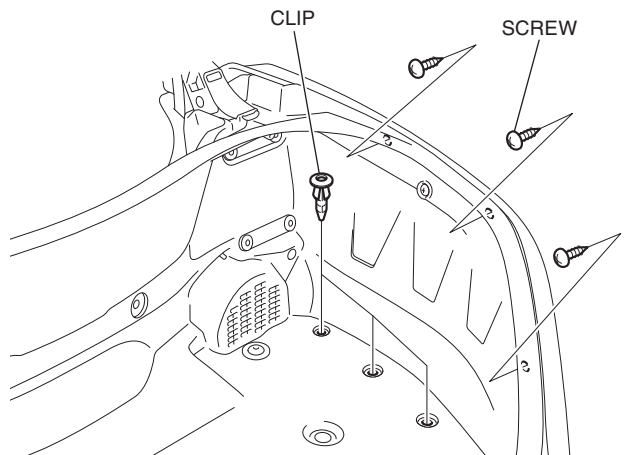


12. Remove the front trunk lower panel as shown.



13. Remove the parts as shown.
- Repeat on the left side.

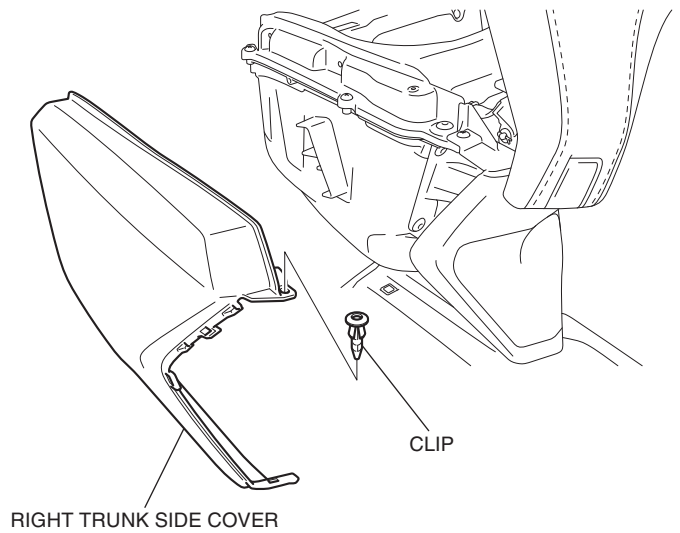
<Right side>



14. Remove the right trunk side cover as shown.

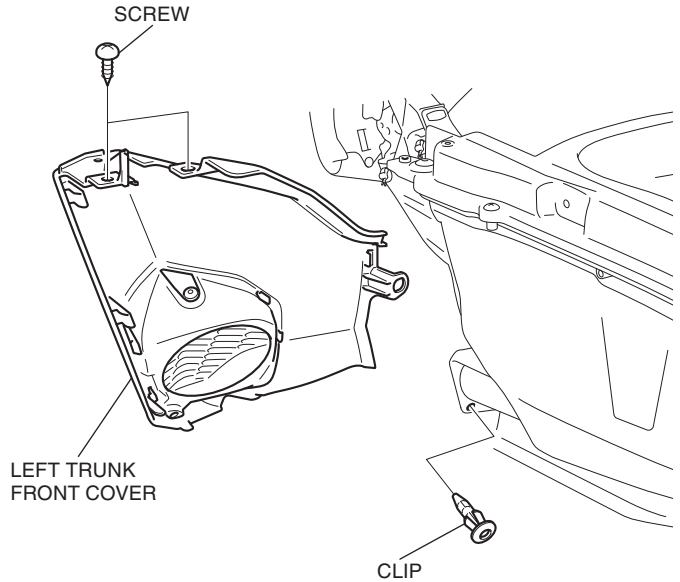
- Repeat on the left side.

<Right side>



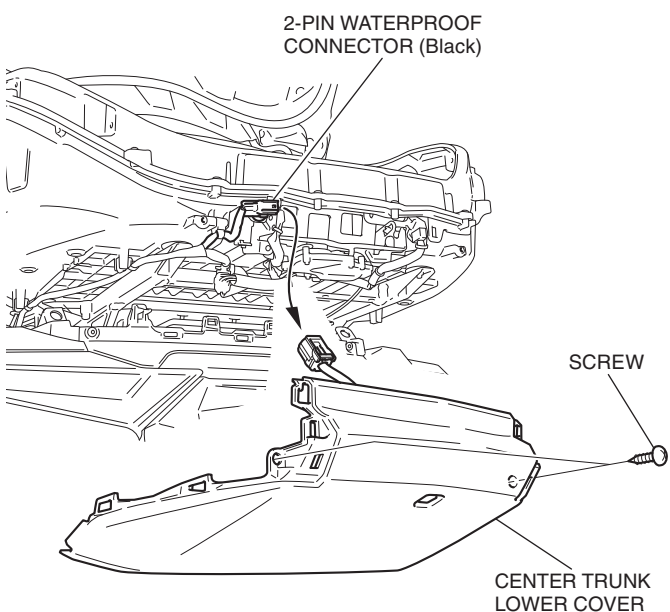
15. Remove the left trunk front cover as shown.

<Left side>

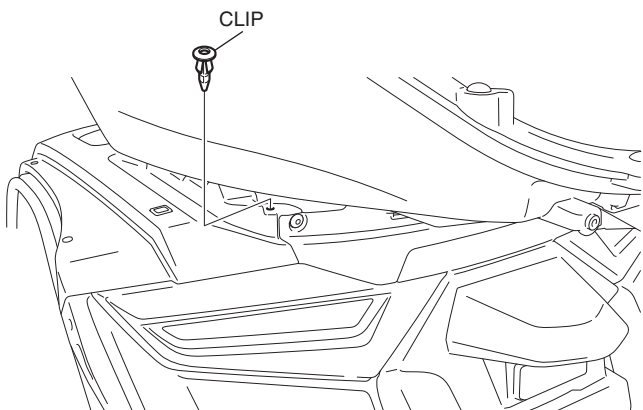




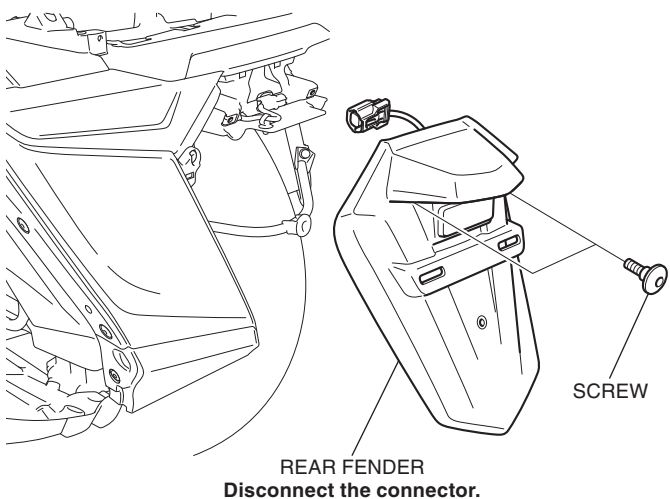
16. Disconnect the connector and remove the center trunk lower cover as shown.



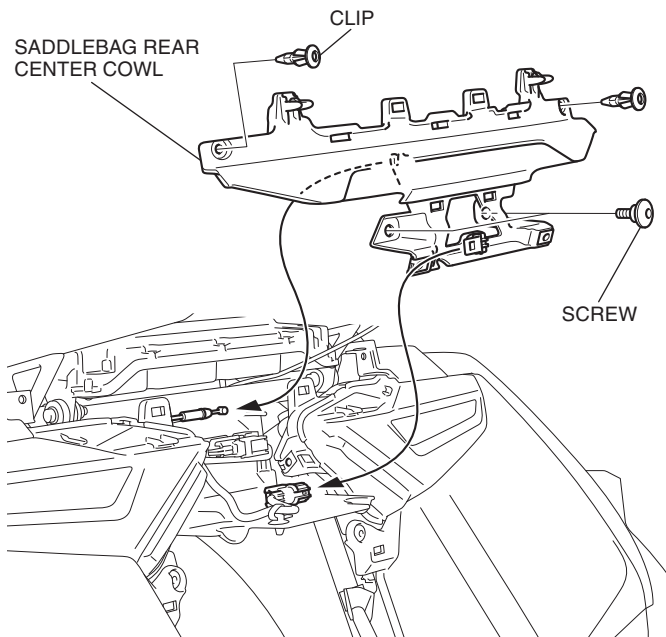
17. Remove the clip as shown.  
<Left side>



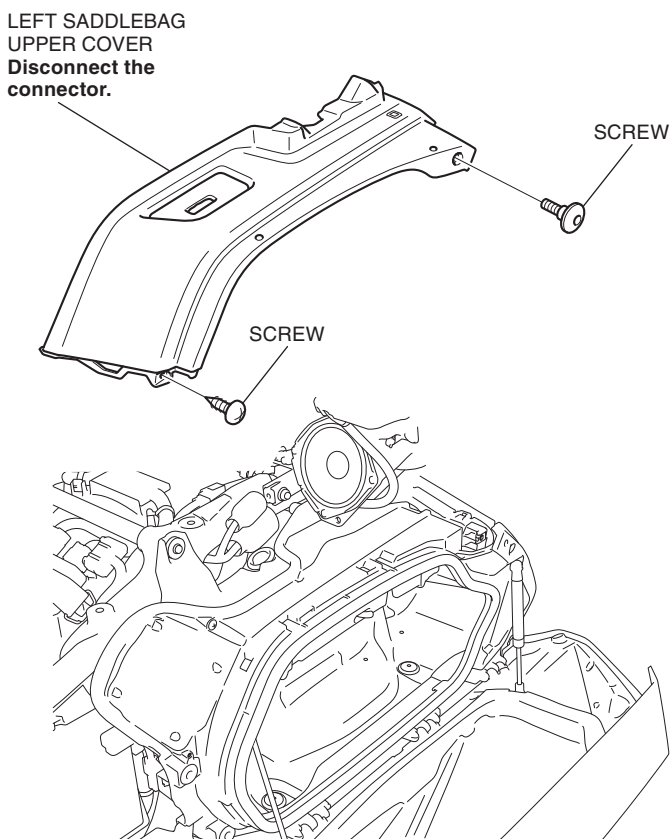
18. Remove the rear fender as shown.



19. Remove the saddlebag rear center cowl as shown.

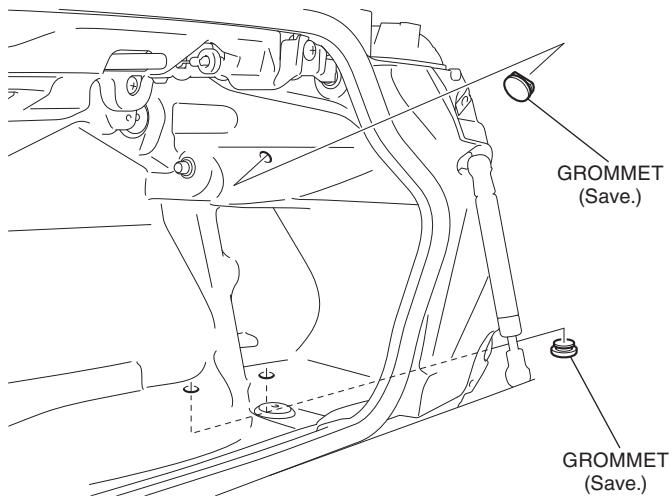


20. Remove the left saddlebag upper cover as shown.  
<Left side>

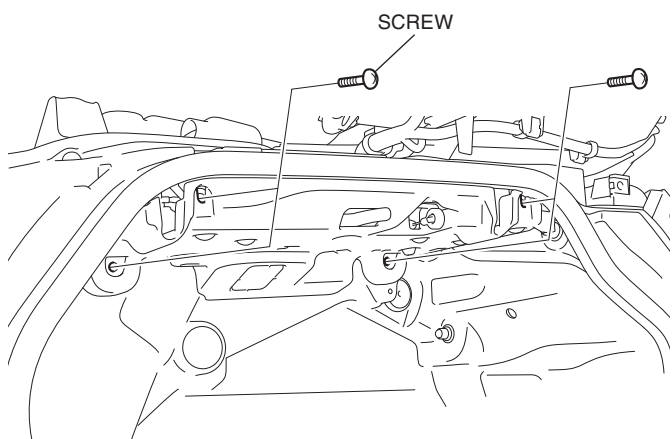


21. Remove the grommets as shown.

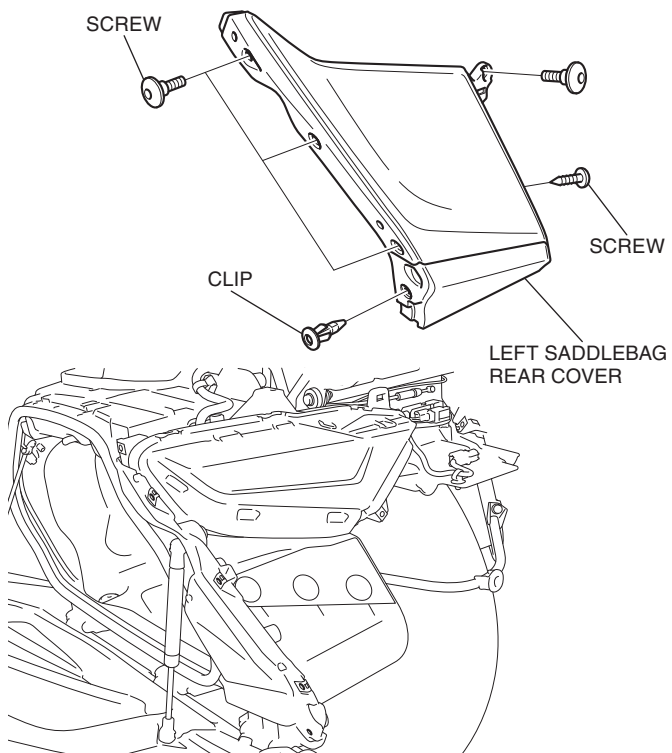
<Left side>



22. Remove the screws as shown.

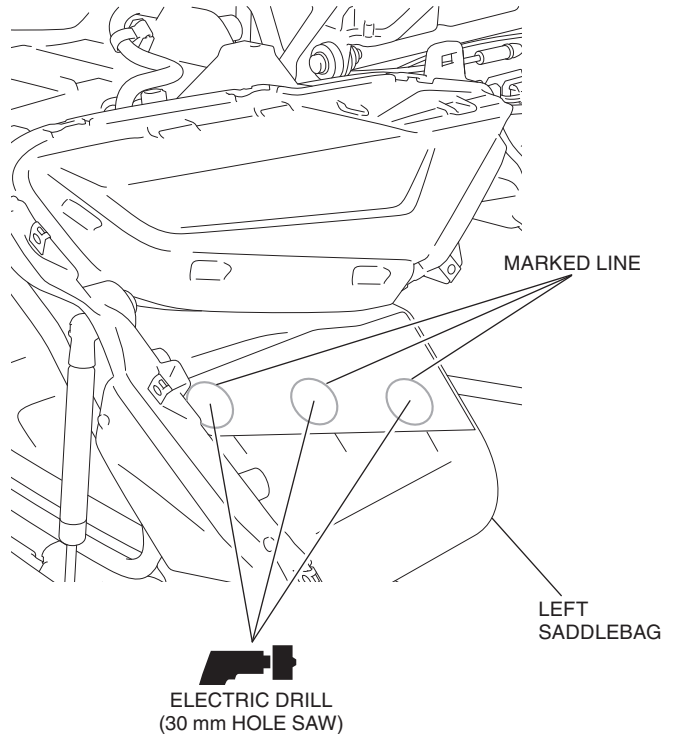


23. Remove the left saddlebag rear cover as shown.



24. Drill at the marked lines of the left saddlebag as shown.

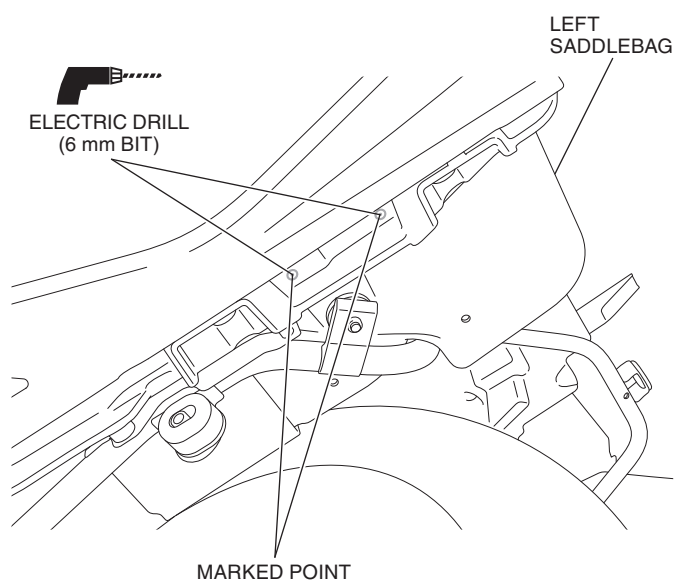
- Drill holes at the center of the marked lines.
- Remove any burrs from the edge of the hole.



25. Drill at the marked points of the left saddlebag as shown.

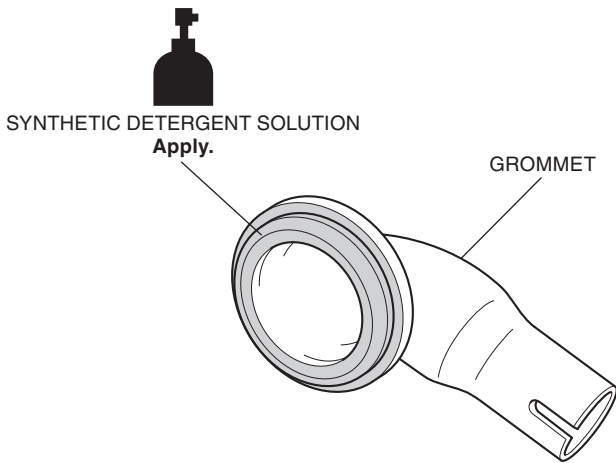
- Remove any burrs from the edge of the hole.

<Under side>

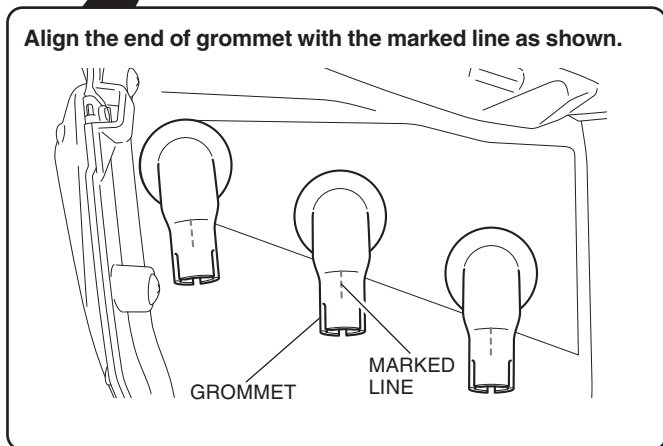
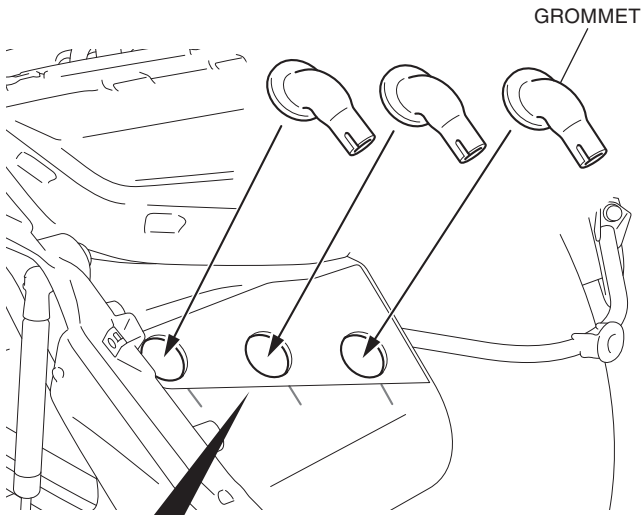


26. Apply synthetic detergent solution to the position shown.

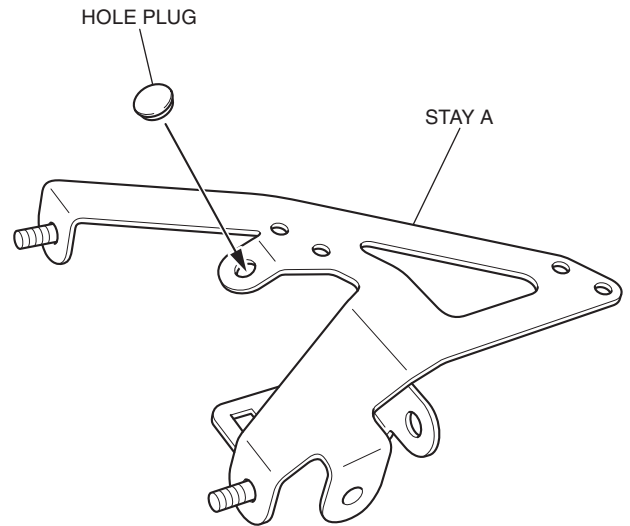
- Perform this step for all three grommets.



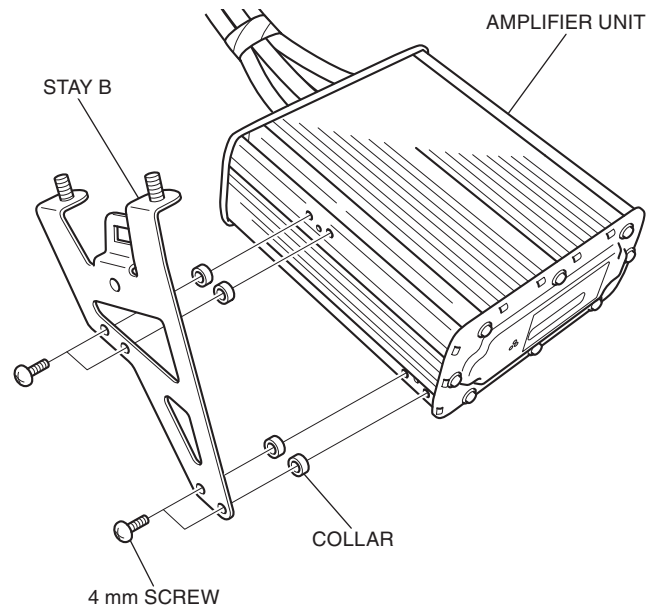
27. Install the grommets as shown.



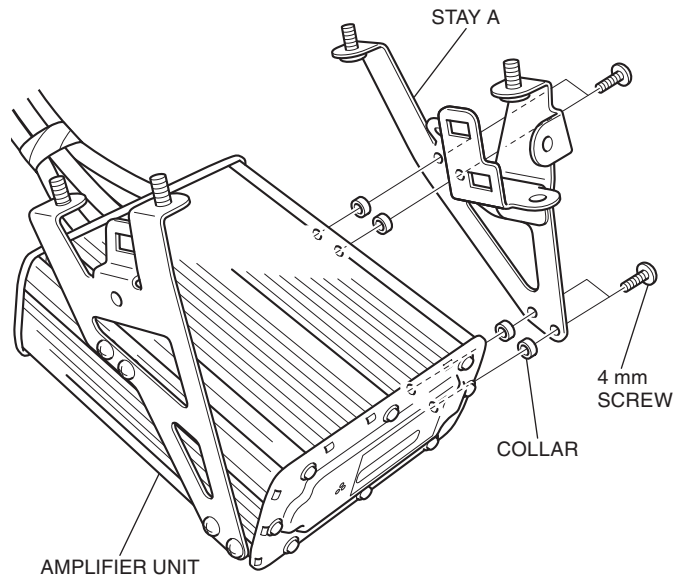
28. Install the hole plug as shown.



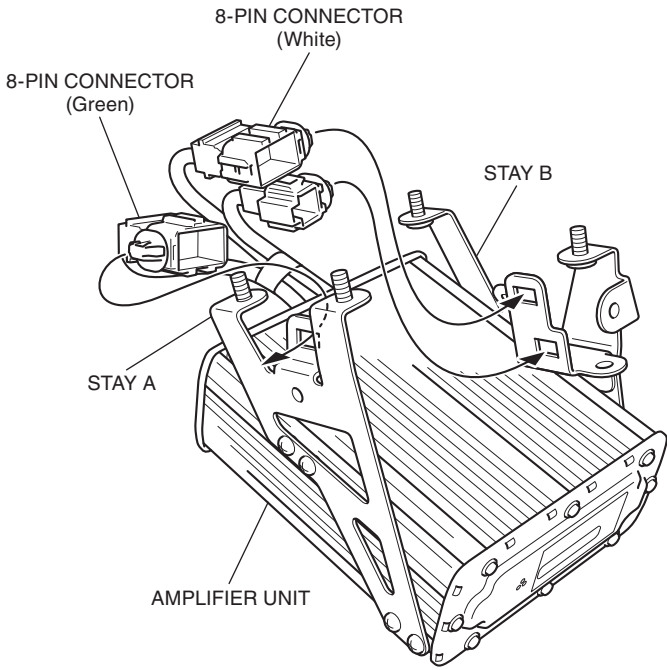
29. Install the stay B as shown.



30. Install the stay A as shown.

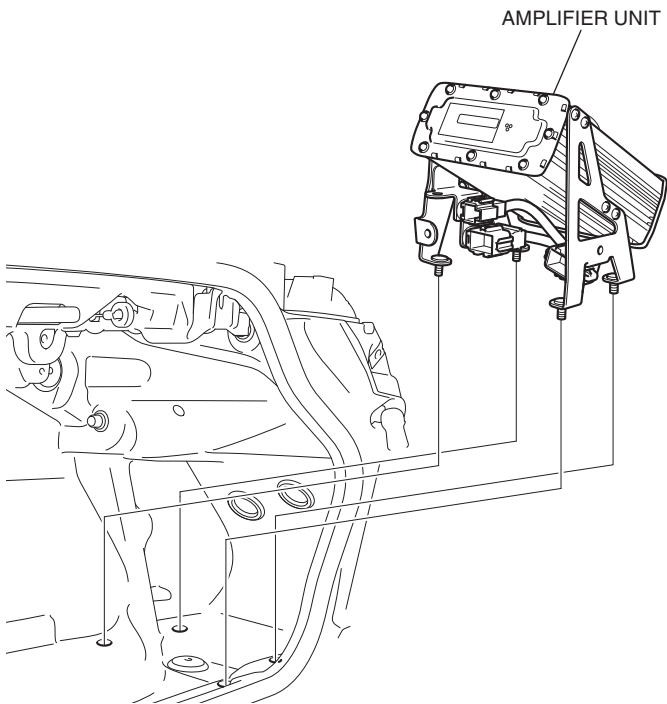


31. Secure the connectors as shown.



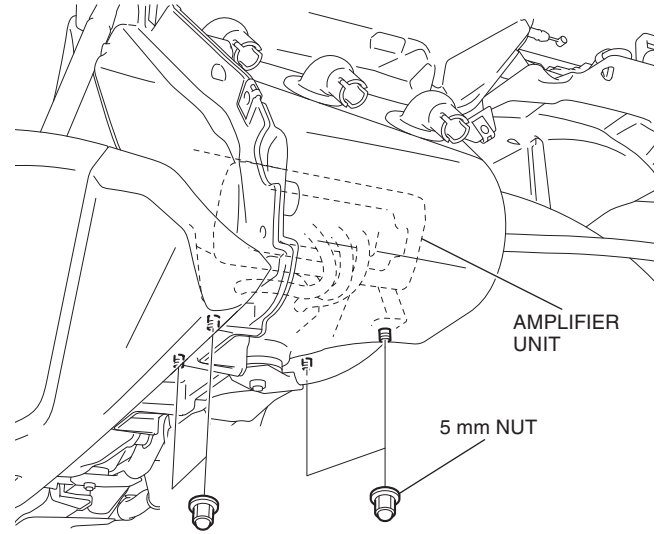
32. Install the amplifier unit as shown.

<Left side>



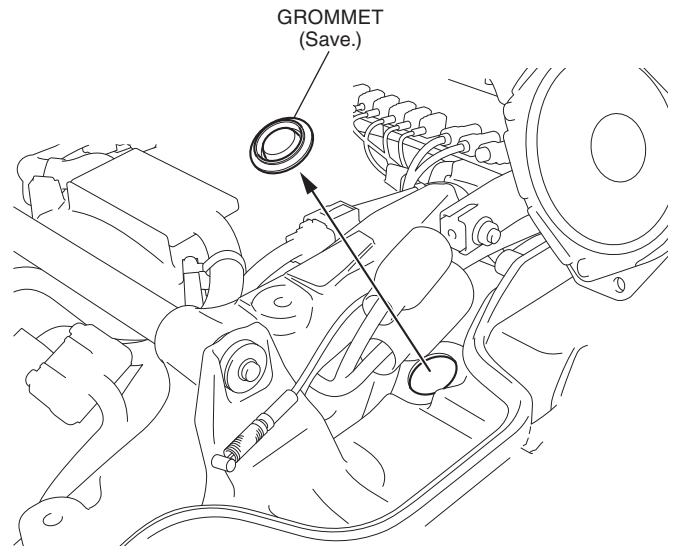
33. Install the 5 mm nuts as shown.

<Left side>

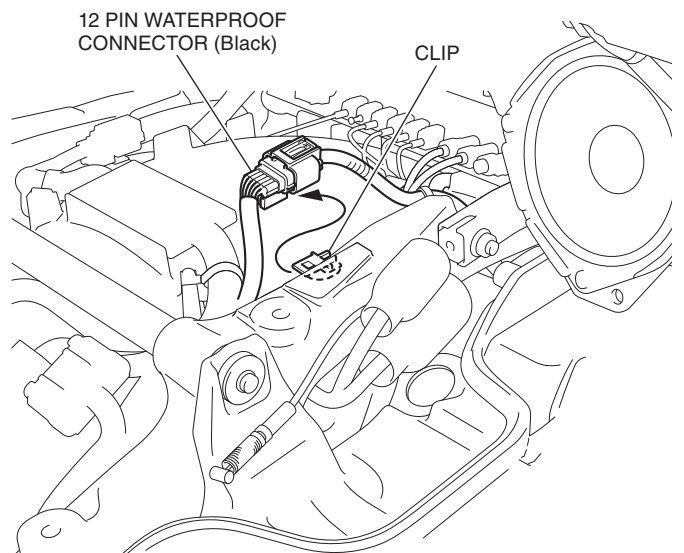


34. Remove the grommet as shown.

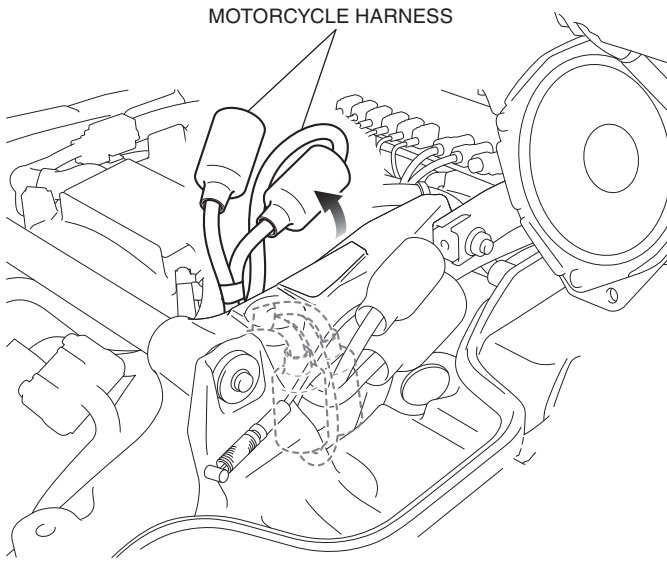
<Left side>



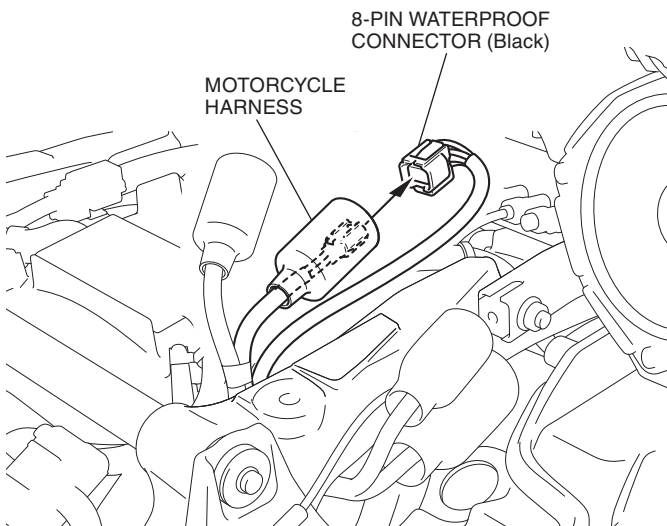
35. Remove the connector as shown.



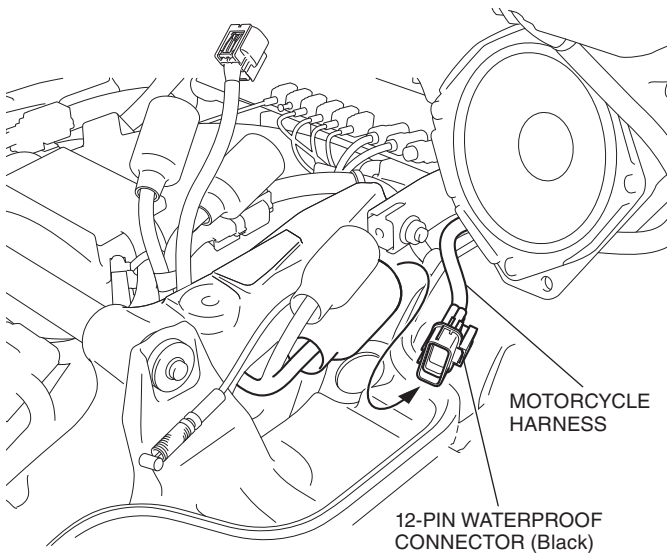
36. Move the motorcycle harnesses as shown.



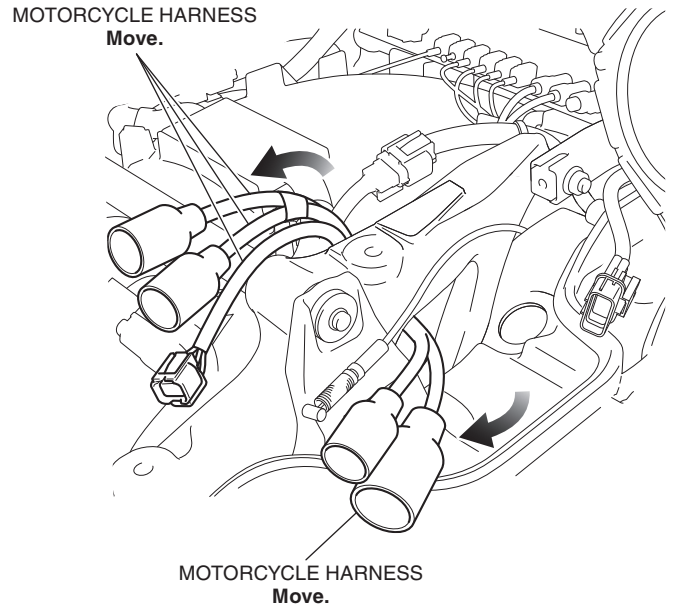
37. Disconnect the connector as shown.



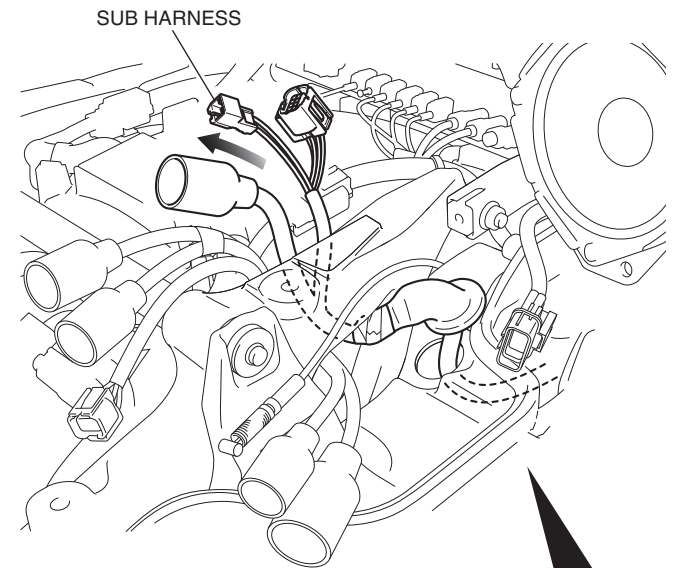
38. Disconnect the motorcycle harness as shown.



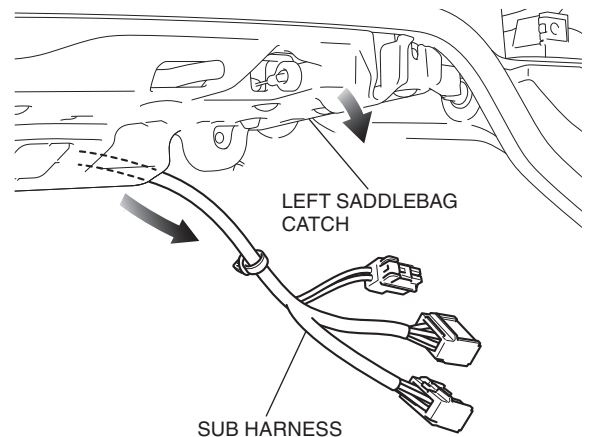
39. Move the motorcycle harnesses as shown.



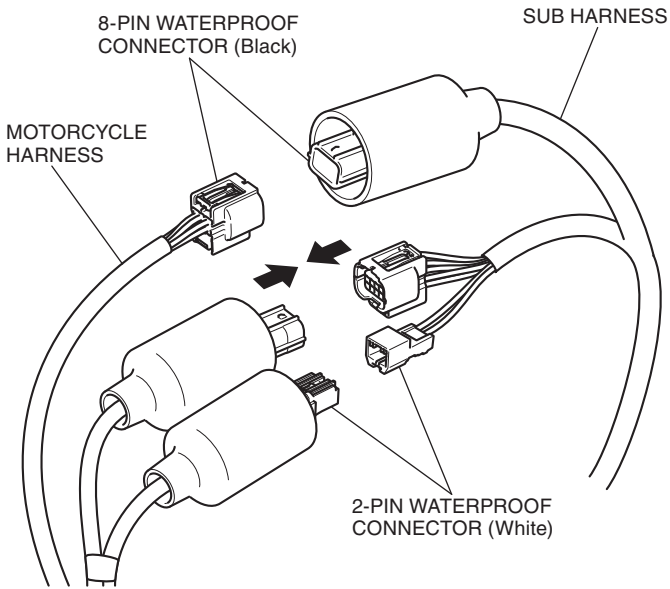
40. Route the sub harness as shown.



Move the left saddlebag catch and route the sub harness as shown.

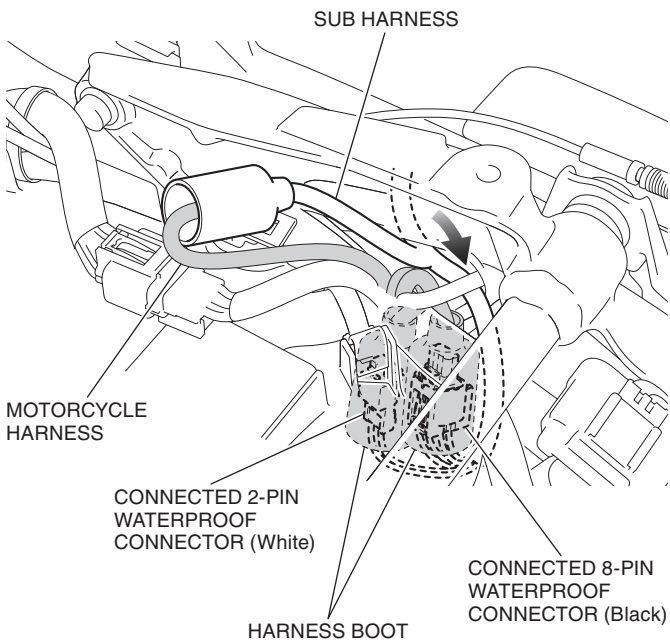


41. Connect the sub harness as shown.

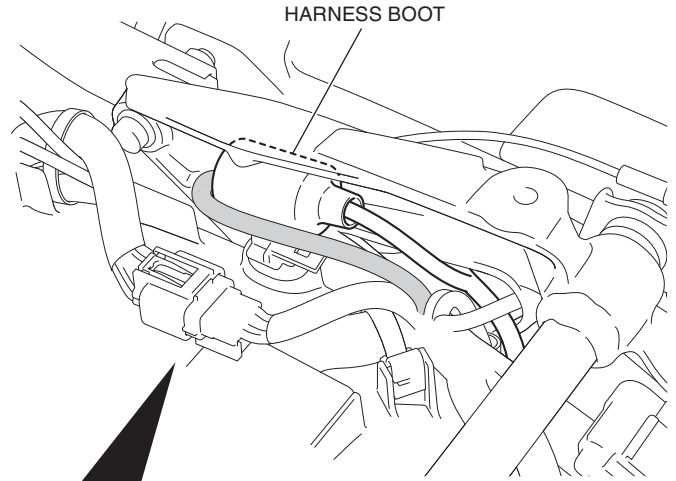


42. Store the harness boots as shown.

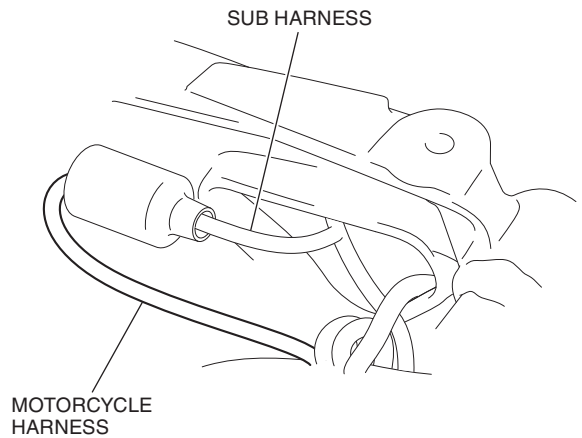
<Left side>



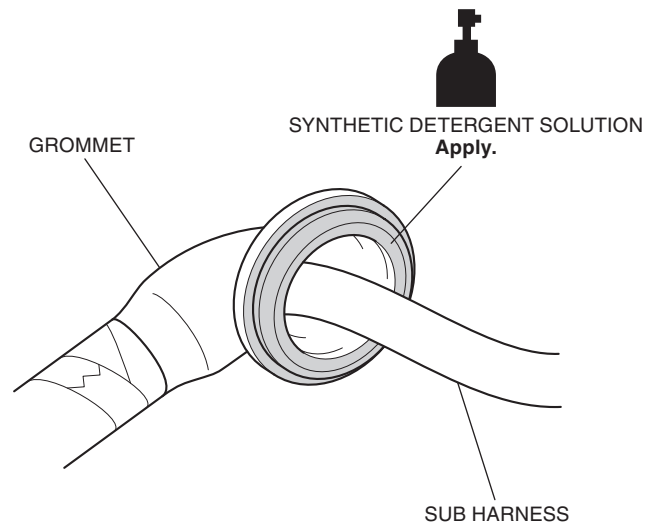
43. Store the boot as shown.



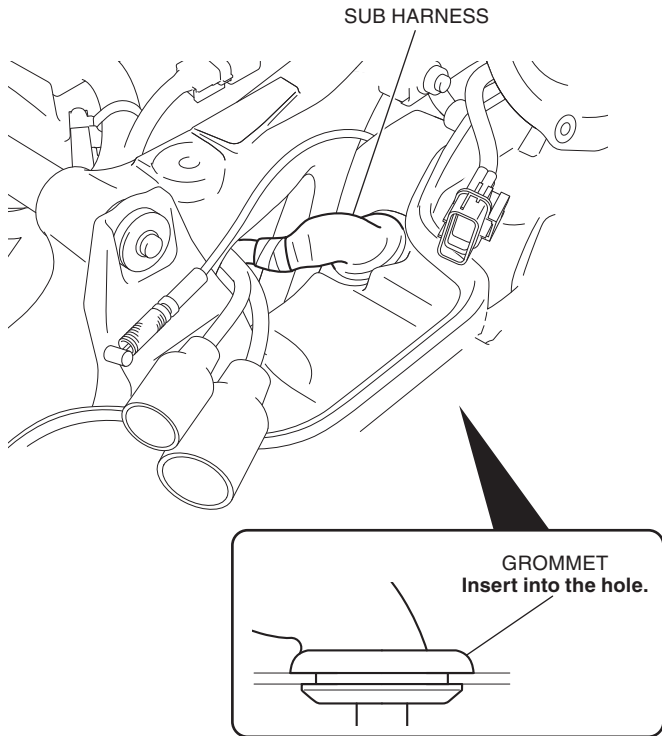
**Fold back the motorcycle harness as shown**



44. Apply synthetic detergent solution to the position shown.

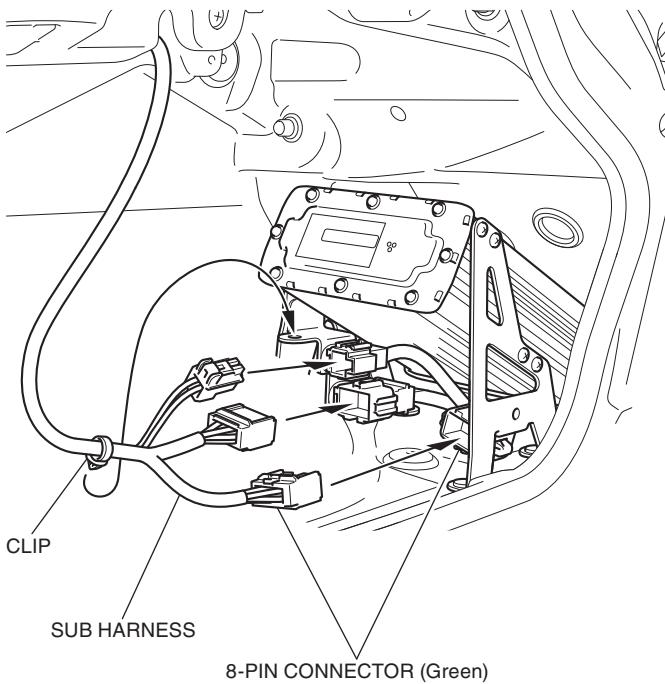


45. Install the sub harness as shown.

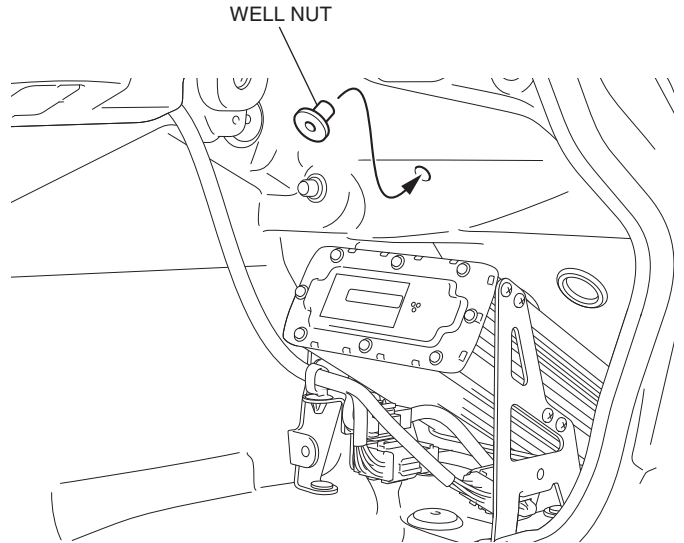


46. Install the left saddlebag catch in the reverse order of removal.

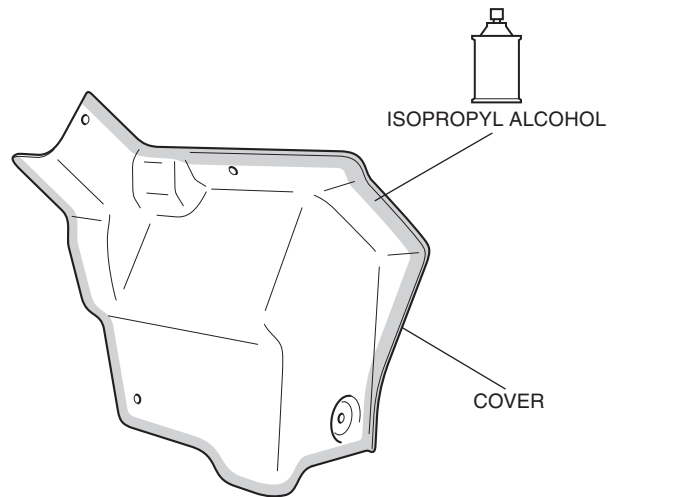
47. Connect the sub harness and install the clip as shown.



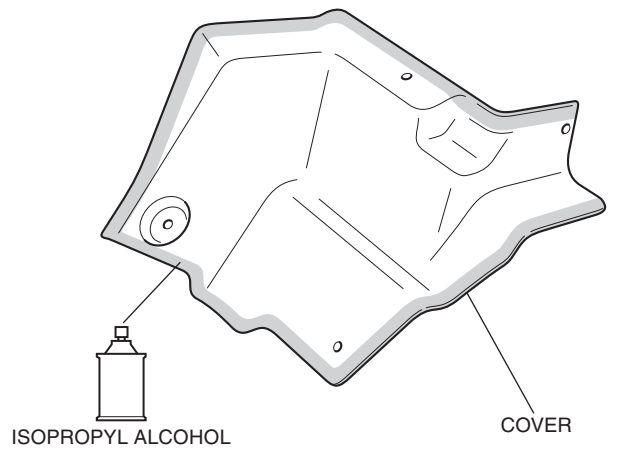
48. Install the well nut as shown.



49. Clean the surface of the area shown using isopropyl alcohol.

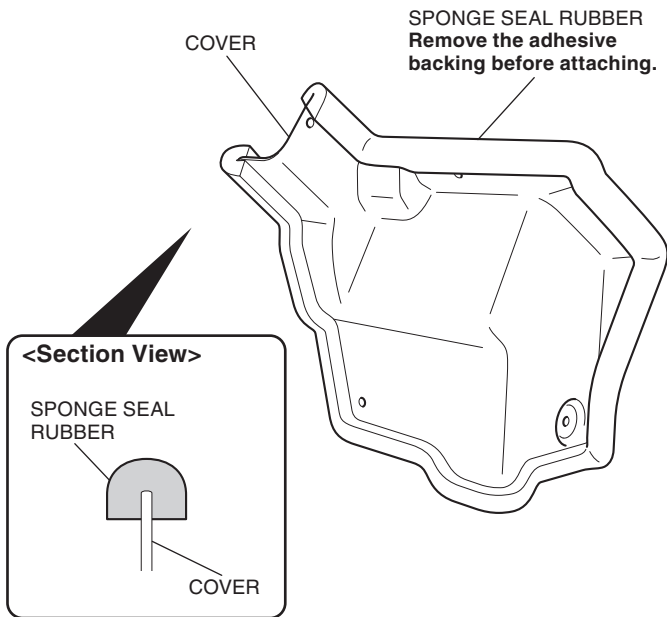


<Backside>



50. Attach the sponge seal rubber as shown.

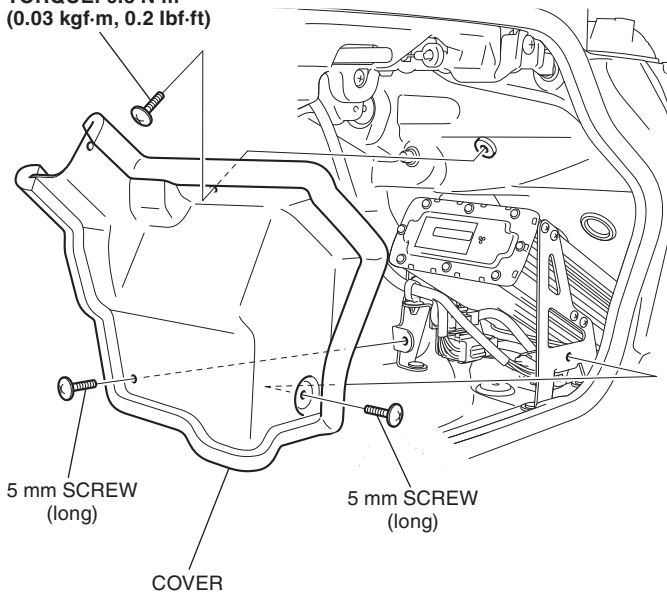
- **Trim the excess end off the sponge seal rubber.**



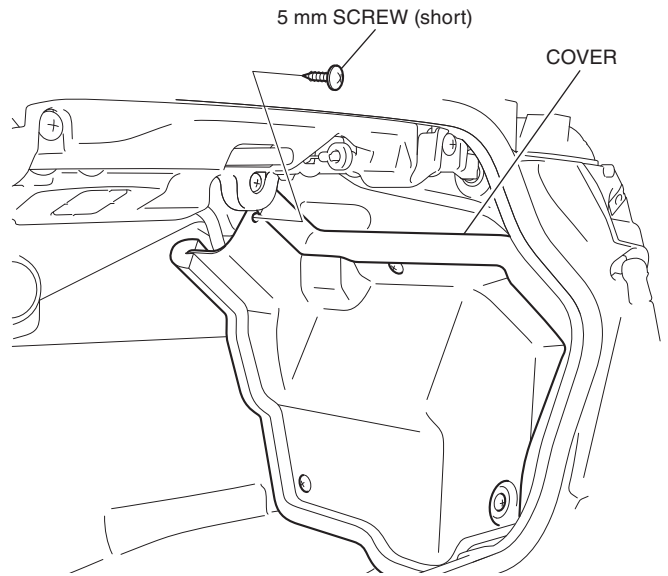
51. Install the cover as shown.

- **Confirm that the wire harness is not caught or too tight.**

5 mm SCREW (long)  
TORQUE: 0.3 N·m  
(0.03 kgf·m, 0.2 lbf·ft)



52. Install the 5 mm screw as shown.



53. Install the motorcycle parts in the reverse order of removal.

- **Confirm that the wire harness is not caught or too tight.**

54. Check the power amplifier, speaker, headlight and the other lights for proper operation.